

RESEARCH ARTICLE

Na⁺/H⁺ Exchanger Isoform 1 Induced Cardiomyocyte Hypertrophy Involves Activation of p90 Ribosomal S6 Kinase

Maiy Jaballah, Iman A. Mohamed, Bayan Alemrayat, Fatima Al-Sulaiti, Mohamed Mlih, Fatima Mraiche*

College of Pharmacy, Qatar University, Doha, Qatar

* fatima.mraiche@qu.edu.qa



OPEN ACCESS

Citation: Jaballah M, Mohamed IA, Alemrayat B, Al-Sulaiti F, Mlih M, Mraiche F (2015) Na⁺/H⁺ Exchanger Isoform 1 Induced Cardiomyocyte Hypertrophy Involves Activation of p90 Ribosomal S6 Kinase. PLoS ONE 10(4): e0122230. doi:10.1371/journal.pone.0122230

Academic Editor: Sathyamangla Venakata Naga Prasad, Cleveland Clinic, UNITED STATES

Received: August 19, 2014

Accepted: February 10, 2015

Published: April 1, 2015

Copyright: © 2015 Jaballah et al. This is an open access article distributed under the terms of the [Creative Commons Attribution License](https://creativecommons.org/licenses/by/4.0/), which permits unrestricted use, distribution, and reproduction in any medium, provided the original author and source are credited.

Data Availability Statement: All relevant data are within the paper and its Supporting Information files.

Funding: This work was supported by a Qatar University Internal Grant (QUUG-CPH-CPH-11/12-1) and by the Undergraduate Research Experience Program (UREP11-027-3-005) provided by the Qatar National Research Fund, Doha, Qatar (<http://www.qnrf.org>). Lead principal investigator (PI): FM. The funders had no role in study design, data collection and analysis, decision to publish, or preparation of the manuscript.

Abstract

Studies using pharmacological and genetic approaches have shown that increased activity/expression of the Na⁺/H⁺ exchanger isoform 1 (NHE1) play a critical role in the pathogenesis of cardiac hypertrophy. Despite the importance of NHE1 in cardiac hypertrophy, severe cerebrovascular side effects were associated with the use of NHE1 inhibitors when administered to patients with myocardial infarctions. p90 ribosomal S6 Kinase (RSK), a downstream regulator of the mitogen-activated protein kinase pathway, has also been implicated in cardiac hypertrophy. We hypothesized that RSK plays a role in the NHE1 induced cardiomyocyte hypertrophic response. Infection of H9c2 cardiomyoblasts with the active form of the NHE1 adenovirus induced hypertrophy and was associated with an increase in the phosphorylation of RSK ($P < 0.05$). Parameters of hypertrophy such as cell area, protein content and atrial natriuretic mRNA expression were significantly reduced in H9c2 cardiomyoblasts infected with active NHE1 in the presence of dominant negative RSK (DN-RSK) ($P < 0.05$). These results confirm that NHE1 lies upstream of RSK. Increased phosphorylation and activation of GATA4 at Ser²⁶¹ was correlated with increased RSK phosphorylation. This increase was reversed upon inhibition of RSK or NHE1. These findings demonstrate for the first time that the NHE1 mediated hypertrophy is accounted for by increased activation and phosphorylation of RSK, which subsequently increased the phosphorylation of GATA4; eventually activating fetal gene transcriptional machinery.

Introduction

Cardiovascular diseases (CVDs) remain one of the leading causes of death worldwide despite the advances in treatment [1]. Cardiomyocyte hypertrophy (CH), a condition that occurs in response to mechanical load and neurohormonal stimulation, is characterized by an increase in cardiomyocyte size, enhanced protein synthesis and the reactivation of the fetal gene program [2]. Pathological CH results in left ventricular dysfunction and heart failure if left unresolved [3]. Neurohormonal stimulation mediated by α -adrenergic agonists including phenylephrine

Competing Interests: The authors have declared that no competing interests exist.

(PE), endothelin-1 and angiotensin II (ANG II) has been demonstrated to activate the Na⁺/H⁺ exchanger isoform 1 (NHE1) and contribute to hypertrophy [4, 5]. NHE1 is a ubiquitously expressed housekeeping glycoprotein, in which the activity contributes to regulating intracellular pH (pH_i) through a 1:1 stoichiometric exchange of H⁺ for extracellular Na⁺ [6, 7]. Previous reports have suggested that increased NHE1 activity is involved in the pathogenesis of cardiac pathologies [8] including CH [9, 10] and ischemia/reperfusion (I/R) injury [11] in both *in vivo* and *in vitro* models. Complimentary genetic evidence for the key role of NHE1 in CH was further emphasized by our group, which demonstrated that transgenic mice expressing a cardiac specific active form of NHE1, rather than a wild type NHE1 form, had an exacerbated hypertrophic response [12]. Furthermore, pharmacological inhibition of NHE1 activity *in vivo* was sufficient to reduce isoproterenol-induced CH [13–15]. The implication of NHE1 in CH addresses a need to inhibit the deleterious effect of increased NHE1 activity in the heart, while salvaging its homeostatic functions [16]. Therefore, a better understanding of the molecular mechanisms downstream of the NHE1 activation contributing to CH are necessary in order to develop more specific strategies to indirectly inhibit NHE1.

Recent reports suggest that NHE1 regulates the activity of various subfamilies of the mitogen activated protein kinase (MAPKs) family in the setting of hypertrophy [17]. Both extracellular regulated kinase 1/2 (ERK1/2) and NHE1 have been demonstrated to be activated upon stimulation with ANG II in rat aortic smooth muscle cells, an effect that was attenuated by inhibition of NHE1 [18]. Similarly, EMD87580, an NHE1 inhibitor attenuated the activation of both ERK1/2 and p38 MAPK following stimulation with PE in neonatal rat ventricular cardiomyocytes (NRVMs) [19]. However, p90 ribosomal S6 kinase (RSK), a Ser/Thr protein kinase and a well known downstream effector of ERK, and one whose activity and phosphorylation levels were elevated in patients with end stage dilated cardiomyopathy [20] was not evaluated in these settings. RSK is activated upon phosphorylation at multiple residues. These phosphorylation events are triggered by ERK1/2 at Thr⁵⁷³ in the C-terminal kinase domain of RSK [21]. Interestingly, RSK has also been demonstrated to be a primary regulator of NHE1 activity through phosphorylation of Ser⁷⁰³ at the NHE1 C-terminal, and to facilitating the binding of the 14-3-3 protein to the phosphorylated Ser⁷⁰³ residue [22]. Moreover, in NRVMs and adult rat ventricular cardiomyocytes (ARVMs), RSK has been demonstrated to play a key role in the activation of ribosomal RNA synthesis in response to hypertrophic stimulation by endothelin-1 and PE [23]. It is therefore hypothesized that RSK plays an important role in the NHE1 induced cardiomyocyte hypertrophic response. The mechanism by which NHE1-regulates RSK has never been clearly defined.

GATA binding protein 4 (GATA4), a zinc finger transcription factor which acts as a crucial regulator of cardiac development and hypertrophy in response to hypertrophic PE stimulation in NRVMs has been identified as the main effector of RSK [24, 25]. RSK, specifically RSK isoform 2, was shown to activate GATA4 through phosphorylation at Ser²⁶¹, suggesting that RSK mediates the GATA4 dependent reactivation of cardiac fetal genes [26]. The present study was conducted to determine whether RSK could account for hypertrophy induced by active NHE1 in H9c2 cardiomyoblasts through activation of GATA4. Our study emphasizes the role of RSK as a potential therapeutic target for indirectly alleviating hypertrophy induced by up regulation of NHE1 activity. Since RSKs are almost exclusively activated downstream of ERK1/2, therapeutic intervention by RSK inhibition is less likely to produce the side effects observed following inhibition of MEK and ERK1/2.

Materials and Methods

All experimental procedures were in accordance with guidelines set out by the Institutional Biohazard Committee at Qatar University, Doha, Qatar.

Materials

BCECF-AM was from Molecular Probes (Eugene, OR). BI-D1870 was purchased from the Division of Signal Transduction Therapy Unit, University of Dundee, Dundee, UK. EMD87580 (EMD) was a generous gift of Dr. N. Beier of Merck KGaA (Frankfurt, Germany). All other routine chemicals were of analytical grade and were purchased from BD Biosciences (San Jose, CA), Fisher Scientific (Ottawa, ON) or Sigma (St. Louis, MO). The primary antibodies used for western blotting were mouse monoclonal anti-HA-tag (6E2), rabbit polyclonal ERK1/2 (#9102), mouse monoclonal phospho-ERK1/2 (Thr²⁰²/Tyr²⁰⁴) (#9106), and rabbit polyclonal phospho-RSK (Ser³⁸⁰) (#9341), all from Cell Signaling Technology (Pickering, ON). The mouse monoclonal antibody against NHE1 was from BD Biosciences Pharmingen (San Diego, CA). Rabbit polyclonal RSK1 (C-21) (sc-231), goat polyclonal RSK2 (C-19) (sc-1430) and rabbit polyclonal p-GATA4 Ser²⁶² (sc-32823) antibodies were from Santa Cruz Biotechnology (Santa Cruz, CA). Rabbit polyclonal antibodies for α -tubulin (ab4074) and GATA4 (ab-134057) were purchased from Abcam (Cambridge, MA). Secondary antibodies conjugated with peroxidase, goat-anti-mouse, goat-anti-rabbit and donkey-anti-goat were purchased from Jackson ImmunoResearch (West Grove, PA) or Abcam.

Methods

Culturing of H9c2 cardiomyoblasts. H9c2 cardiomyoblasts, a clonal cell line derived from the embryonic BD1X rat heart tissue, were obtained from European Collections of Cell Cultures (ECACC) and cultured in DMEM/F12 1:1 culture media supplemented with 10% FBS and 1% penicillin/streptomycin (P/S) at 37°C in a humidified atmosphere (95% O₂-5% CO₂) [27]. Upon becoming confluent, cells were seeded at a density of 2.0×10^6 cells per 35mm culture dishes containing the 10% FBS culture medium. In some experiments, H9c2 cardiomyoblasts were stimulated with 100 μ M PE in the presence or absence of 10 μ M BI-D1870 or EMD. Stock solutions of agonists/inhibitors were prepared at 1000 \times the working concentration and added directly to the tissue culture medium for the indicated time points. BI-D1870 was dissolved in DMSO, while PE and EMD were dissolved in water. For the PE treated experiments, H9c2 cardiomyoblasts were seeded in 35mm dishes for 24 hours in 10% FBS supplemented media. The media was then changed to serum-free maintenance medium for an additional 24 hours prior to treatment for the indicated time intervals were they were then subjected to lysing and immunoblotting.

Adenoviral preparation. The pAdTrack plasmids were used to engineer the NHE1 containing adenovirus as previously described [28]. The NHE1 plasmid also contained mutations in the Lys⁶⁴¹, Arg⁶⁴³, Arg⁶⁴⁵ and Arg⁶⁴⁷ sites (to glutamic acid) that renders the protein active [29]. The RSK dominant-negative adenovirus (DN RSK) expresses a RSK protein with a mutation at Lys100Ala, which renders it catalytically inactive (a gift from Dr. M. Avkiran, King's College, London, UK) [30, 31]. Both adenoviruses contained a hemagglutinin (HA) tag and the green fluorescent protein (GFP), which were used to confirm expression of the respective proteins.

Adenoviral infection of H9c2 cardiomyoblasts. H9c2 cardiomyoblasts were seeded in 35mm culture dishes containing the 10% FBS culture medium for 48 hours. H9c2 cardiomyoblasts were infected with the active NHE1 adenovirus in the presence or absence of the DN RSK adenovirus or an adenovirus containing GFP using a multiplicity of infection (MOI) of 50 for GFP and the active NHE1 adenoviruses respectively, while an MOI of 500 was used for the DN RSK encoding adenovirus (S1 Fig). Upon infection, the media was changed to DMEM-F12 HAM supplemented with 0.5% FBS and 1% P/S. Following infection, H9c2 cardiomyoblasts were incubated at 37°C in a humidified atmosphere (95% O₂-5% CO₂) incubator for an additional 48 hours prior to lysing, immunoblotting and all assays carried out.

Western blot analysis. H9c2 cardiomyoblasts were lysed 48 hours post infection using the radio-immunoprecipitation protein assay (RIPA) buffer as described earlier [27]. Briefly, cardiomyoblasts were lysed in 100 μ L RIPA buffer in the presence of protease inhibitor cocktail buffer. Cell lysates were centrifuged at 14,000 rpm at 4°C and the supernatant containing the proteins were collected. Total amount of protein present in each sample was quantified using the DC protein assay kit from Biorad according to the manufacturer's instructions. For the PE treatment experiments, cardiomyoblasts were sonicated in 1 mL of cell lysis buffer containing mM ((50 Na-pyrophosphate, 50 NaF, 50 NaCl, 5 EDTA, 5 EGTA, 0.1 sodium orthovanadate, 10 Hepes) and 0.1% Triton X-100, 0.5 mM PMSF, 10 mg/mL leupeptin; pH 7.4)). For protein expression, 10–20 mg of protein was resolved on 9% SDS-PAGE and transferred on to nitrocellulose membranes. For phosphorylated protein expression, relative phosphorylation protein expression were obtained through normalizing the phosphorylated protein to total protein expression (pERK/ERK, pRSK/RSK, and pGATA4/GATA4). In some cases, the phosphorylated protein was normalized to α -tubulin, which was used as a loading control. Immunoreactive proteins were visualized using enhanced chemiluminescence (Amersham Biosciences) and imaged using the Alpha Innotech FluorChem Imager (R&D Systems).

Measurement of NHE1 activity. H9c2 cardiomyoblasts plated on a coverslip were loaded with 3 μ g/mL pH sensitive dye 2,7-bis(carboxyethyl)-5(6)-carboxyfluorescein acetoxymethyl ester (BCECF-AM). The change in H^+ concentration was measured using a PTI Deltascan spectrofluorometer (Photon Technology International; London, Ontario). The excitation wavelengths were set at 502.5 nm and 440 nm and the emission wavelength was set at 528.7 nm. The cardiomyoblasts plated coverslip was initially maintained in a pre-warmed solution of Na^+ -normal buffer (mM (135 NaCl, 5 KCl, 1.8 $CaCl_2$, 1 $MgSO_4$, 5.5 Glucose, 10 HEPES) at 37°C. The coverslip plated with cardiomyoblasts was then subjected to 50 mM ammonium chloride to induce an acid load as previously described [31]. Following acidification, coverslips were placed in Na^+ normal buffer to allow the cells to recover. Each coverslip was then equilibrated in a three-step pH calibration buffer solution containing 135 mM N-methyl-glucamine and KCl and adjusted to a pH of 8, 7 or 6. The pH calibration buffers were incubated with 10 mM nigericin, a K^+ ionophore. The three-step pH calibration was used to generate a standard curve in which the fluorescence output measurements were converted into pH_i [9, 32]. The initial rate of recovery following an induced acid load was measured and used as an indicator of the NHE1 activity. For PE treated experiments, cells were first stimulated with the inhibitor (EMD-10 μ M) for 3 minutes at 37°C, followed by PE (100 μ M) for further 6 minutes. The treatment was maintained throughout the whole experiment, and the rate of recovery was calculated as mentioned previously [33].

Measurement of cell surface area. Surface area of infected cardiomyoblasts was measured 48 hours post infection. The average cell area of 50–70 randomly selected cells out of 6–7 experiments was taken. Cells were visualized with an inverted microscope equipped with a monochrome digitalized camera for the detection of fluorescence signals using 10X magnification. Cell surface area was determined using the AxioVision Imaging Software (Carl Zeiss Micro imaging, New York, NY).

Measurement of protein content. Protein content was measured as described previously [34]. H9c2 cardiomyoblasts in 35-mm dishes were washed twice in 1 x PBS and collected by trypsinization with 0.25% trypsin-EDTA solution (Invitrogen). The total number of cells was calculated using a Countess Cell Counting Chamber Slide (Invitrogen). Another set of infected H9c2 cardiomyoblasts in 35-mm dishes were lysed in RIPA buffer as described earlier [27]. Protein concentration of infected cardiomyoblasts lysed in RIPA buffer was measured using the DC protein assay kit (Biorad). Protein content was determined by calculating the total amount of protein (μ g) in 10^6 cells.

Expression of ANP mRNA using reverse transcription-polymerase chain reaction.

RNA was extracted from cardiomyoblasts using the Total RNA Purification Kit (Norgen). Total RNA (1 μ g) was reverse transcribed into cDNA using SuperScript III First Strand Synthesis SuperMix (Invitrogen). 150–175 ng of cDNA was amplified for ANP using sense 5'-CTGCTAGACCACCTGGAGGA-3' and antisense 5'-AAGCTGTTGCAGCCTAGTCC-3'. β -actin cDNA was primed with sense 5'-GTTCCGATGCCCCGAGGCTCT-3' and antisense 5'-GCATTTGCGTGACAGATGGA-3' (130) using 2x PCR Master Mix (Norgen) and used to normalize mRNA expression. Following an initial denaturation of 15 minutes at 95°C, the samples were denatured at 95°C for 10 seconds, annealed and extended at 60°C for 30 seconds for 35 cycles. A final extension of 72°C for 5 minutes was performed in order to ensure maximum recovery of products. ANP cDNA PCR products were then electrophoresed on 2% agarose gels stained with ethidium bromide. ANP and β -actin were detected at 320 and 147 bp respectively. ANP and β -actin were quantified using the Alpha Innotech FluorChem Imager. The changes in ANP mRNA levels were normalized to β -actin.

Statistics. All values expressed are compared to control \pm SEM. Comparisons were performed by use of unpaired Student's *t*-test and one-way ANOVA; a *P* value < 0.05 was considered statistically significant.

Results

Active NHE1 induces phosphorylation of RSK

Previous reports have demonstrated upregulation of NHE1 activity/expression in models of CH [35–38]. To elucidate the signaling pathway contributing to NHE1 dependent hypertrophy, an *in vitro* gain of function model was utilized. H9c2 cardiomyoblasts were infected with an adenoviral vector encoding for the active form of NHE1 using an MOI of 50 for 48 hours (S1 Fig). An enhanced green fluorescent protein (GFP)-expressing adenovirus under the control of the same promoter of the NHE1 adenovirus served as a control (S1 Fig). NHE1 activity was examined in H9c2 cardiomyoblasts infected with the active form of the NHE1 adenovirus and measured following an ammonium chloride pulse. NHE1 activity, indicative of the rate of recovery following an acid load, was significantly increased in H9c2 cardiomyoblasts infected with the active NHE1 adenovirus (885.6 \pm 156.96% (0.0119 \pm 0.0021 Δ pH_i/min) vs. 100 \pm 33.99% (0.00134 \pm 0.00046 Δ pH_i/min) control, *P*<0.05) (S2 Fig).

Various stimuli induce activation and phosphorylation of RSK including ischemia [39], PE [40], ANG II [41, 42] and reactive oxygen species [43, 44], many of which are also known to activate NHE1. In order to further elucidate the signaling pathway of NHE1 induced hypertrophy, relative phosphorylation levels of RSK was examined by western blotting in H9c2 cardiomyoblasts infected with the active NHE1 adenovirus. RSK phosphorylation was significantly increased (172.17 \pm 22.68% vs. 100 \pm 16.8% control, *P*<0.05) in H9c2 cardiomyoblasts infected with the active NHE1 adenovirus (Figs. 1A and B). In order to further confirm our findings, H9c2 cardiomyoblasts were stimulated with PE, an α_1 adrenoceptor agonist. H9c2 cardiomyoblasts stimulated with PE (100 μ M, 6 minutes) showed a significant increase in NHE1 activity (282.78 \pm 16.47% (0.002 \pm 0.0011 Δ pH_i/min) of control, *P*<0.05), which was significantly decreased with prior treatment with EMD (10 μ M, 3 minutes) (22.94 \pm 13.26% (0.001 \pm 0.000925 Δ pH_i/min) of control, *P*<0.05) (Figs. 1E and F). Exposure of H9c2 cardiomyoblasts to PE (100 μ M, 20 minutes) also increased phosphorylation of RSK (201.72 \pm 21.11% vs. 100 \pm 5.98% control, *P*<0.05), an effect that was significantly reduced upon pretreatment with 10 μ M EMD (130.89 \pm 18.49%, *P*<0.05) (Figs. 1C and D). Our findings establish that increased NHE1 activity results in activation and phosphorylation of RSK.

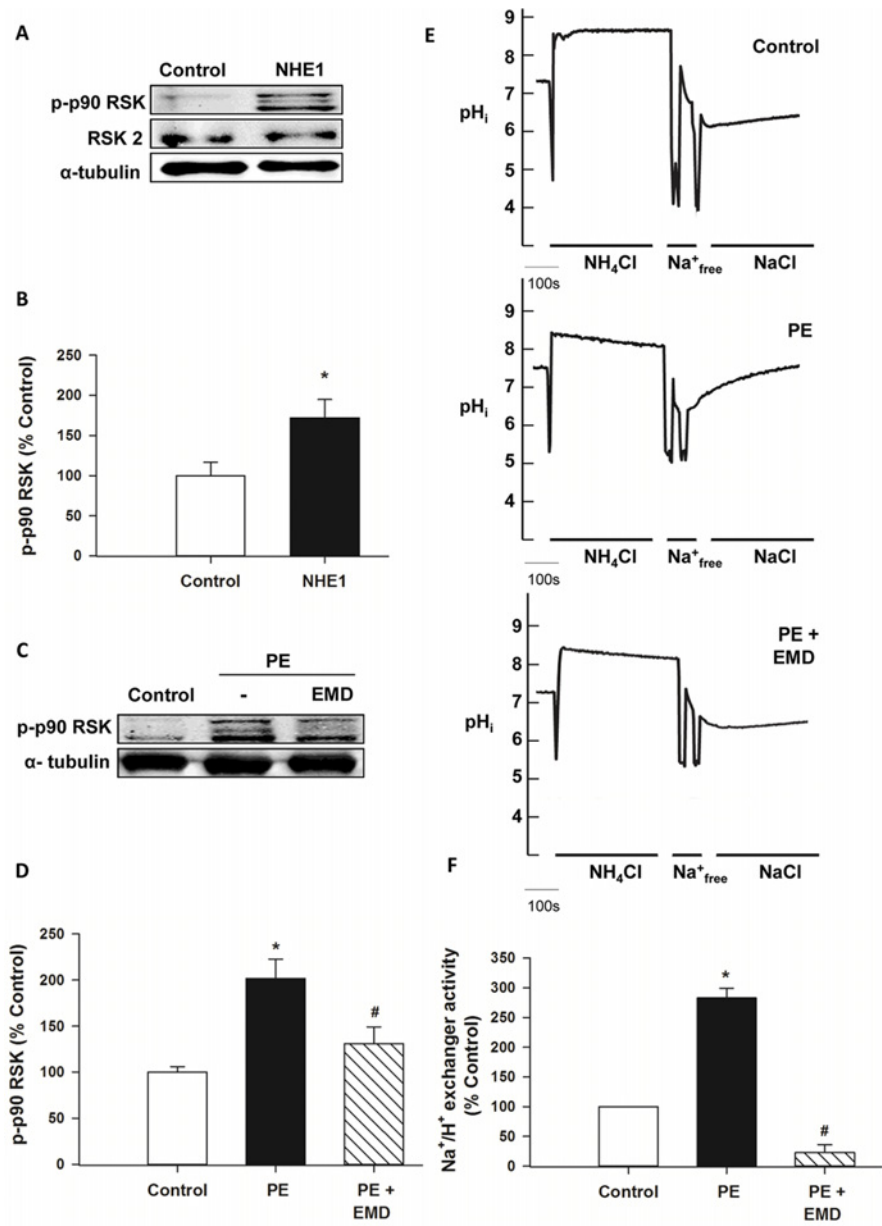


Fig 1. Active NHE1 increases phosphorylation of p90 ribosomal s6 kinase (RSK). **A.** Representative western blot of RSK protein expression in H9c2 cardiomyoblasts infected with GFP (control) or active NHE1 adenovirus. Immunoblotting was against *phosphorylated* RSK (90kDa), *total* RSK 2 (90kDa) or α -tubulin (50kDa); **B.** Quantification of experiments measuring the ratio of phosphorylated RSK to total RSK2 in H9c2 cardiomyoblasts infected with either the GFP (control) or active NHE1 adenovirus for 48 hours (n = 5). Results are expressed as % of control \pm SEM. **P* < 0.05 vs. control; **C.** Representative western blot of H9c2 cardiomyoblasts following treatment with PE in the absence or presence of EMD (NHE1 inhibitor). H9c2 cardiomyoblasts were either untreated (control), exposed to PE (100 μ M for 20 minutes), or pretreated with EMD (10 μ M, 30 minutes) prior to PE treatment for further 20 minutes. Immunoblotting was against *phosphorylated* RSK and α -tubulin; **D.** Quantification of experiments measuring relative levels of phosphorylation of RSK (normalized to tubulin) in H9c2 cardiomyoblasts stimulated with PE in the absence and presence of EMD pretreatment (n = 5). Results are expressed as % of control \pm SEM, **P* < 0.05 vs. control; #*P* < 0.05 vs. PE; **E.** Representative NHE1 activity assay traces in H9c2 cardiomyoblasts for either untreated cells (control), treated with either PE (100 μ M, 6 minutes) alone or with EMD (10 μ M 3 minutes prior to PE treatment); **F.** Quantification of NHE activity of H9c2 cardiomyoblasts either untreated or treated with PE in the absence and presence of EMD (n = 4). Results are expressed as % of control \pm SEM. **P* < 0.05 vs. control; #*P* < 0.05 vs. PE treated group.

doi:10.1371/journal.pone.0122230.g001

Examination of the phosphorylated expression of ERK1/2, an upstream target of RSK, following stimulation with PE reached a maximal response within 5 minutes ($175.44 \pm 17.17\%$ vs. $100 \pm 27.7\%$ control, $P < 0.05$) (S3 Fig). These effects were significantly reduced upon prior treatment with EMD ($119.5 \pm 31.8\%$ of control, $P < 0.05$).

Active NHE1 induces cardiomyocyte hypertrophy via RSK activation

Although RSK has been suggested to mediate CH [21, 23, 45], whether RSK contributes to hypertrophy induced by elevated expression/activity of NHE1 has not been shown. To identify the role of RSK in the NHE1 mediated hypertrophic effect, NHE1 expression/activity was induced in cardiomyoblasts expressing the DN RSK adenovirus, which blocked the RSK kinase domain activity. Expression of active NHE1 in H9c2 cardiomyoblasts caused a significant increase in cell area and protein content ($170.85 \pm 7.38\%$, $P < 0.05$ and $210.1 \pm 34.47\%$, $P < 0.05$ of control, respectively) (Figs. 2A and B). These findings suggest that enhanced expression of active NHE1 induces hypertrophy in H9c2 cardiomyoblasts. H9c2 cardiomyoblasts expressing both active NHE1 and DN RSK demonstrated a significant decrease in cell area ($133.48 \pm 7.72\%$, $P < 0.05$) and protein content ($101.28 \pm 17.45\%$, $P < 0.05$) compared to H9c2 cardiomyoblasts infected with the active NHE1 adenovirus alone (Figs. 2A and B). We also investigated the effect of active NHE1 on ANP mRNA expression, another marker of hypertrophy [46]. ANP mRNA expression in H9c2 cardiomyoblasts expressing active NHE1 significantly increased ($176.6 \pm 19.38\%$ vs. $100 \pm 11.75\%$ control, $P < 0.05$) (Fig. 2C). Co-infection of the active form of the NHE1 adenovirus with the DN RSK adenovirus demonstrated a significant decrease in ANP mRNA expression compared to the NHE1 infected group alone ($122.9 \pm 29.64\%$, $P < 0.05$). H9c2 cardiomyoblasts infected with the DN RSK adenovirus alone showed no significant changes in cell surface area ($95.21 \pm 4.51\%$ of control) and protein content ($82.71 \pm 16.9\%$ of control) (Figs. 2A and B).

Effect of RSK inhibition on NHE1 protein expression and activity

RSK has been demonstrated to be a primary regulator of NHE1 activity through phosphorylation of Ser⁷⁰³ at the NHE1 C-terminal, and to facilitating the binding of 14-3-3 protein to the phosphorylated Ser⁷⁰³ residue [20, 22, 47]. However, the possible role of NHE1 upstream of RSK in the setting of cardiac hypertrophy has so far been unknown. To further elucidate whether DN RSK effects NHE1 protein expression, we examined both exogenous and endogenous NHE1 protein expression in H9c2 cardiomyoblasts infected with either the GFP (control), active form of NHE1 or DN RSK in the presence or absence of the NHE1 adenovirus (Fig. 3A). NHE1 protein expression was significantly increased in H9c2 cardiomyoblasts infected with NHE1 ($430.05 \pm 48.63\%$ vs. $100 \pm 15.8\%$ control, $P < 0.05$) and NHE1 with DN RSK ($410.61 \pm 122.43\%$ of control, $P < 0.05$). However, no significant difference in NHE1 protein expression was seen when comparing H9c2 cardiomyoblasts infected with NHE1 in the absence ($430.05 \pm 48.63\%$ of control) or the presence of DN RSK ($410.6 \pm 122.43\%$ of control) (Fig. 3B). Although no significant changes were observed in NHE1 protein expression, H9c2 cardiomyoblasts co-infected with the active form of the NHE1 adenovirus and the DN RSK adenovirus resulted in a significant decrease in NHE1 activity ($281.64 \pm 96.71\%$ (0.00379 ± 0.0013 $\Delta\text{pH}_i/\text{min}$ of NHE1 alone; $P < 0.01$) (Fig. 3C).

NHE1 induces GATA4 phosphorylation via RSK

GATA binding protein 4 (GATA4) is a transcription factor well known to be implicated in the hypertrophic stimuli. GATA4 can be phosphorylated by MAPKs in response to hypertrophic stimuli such as PE and endothelin-1 at Ser¹⁰⁵, leading to increased transcriptional activity [48,

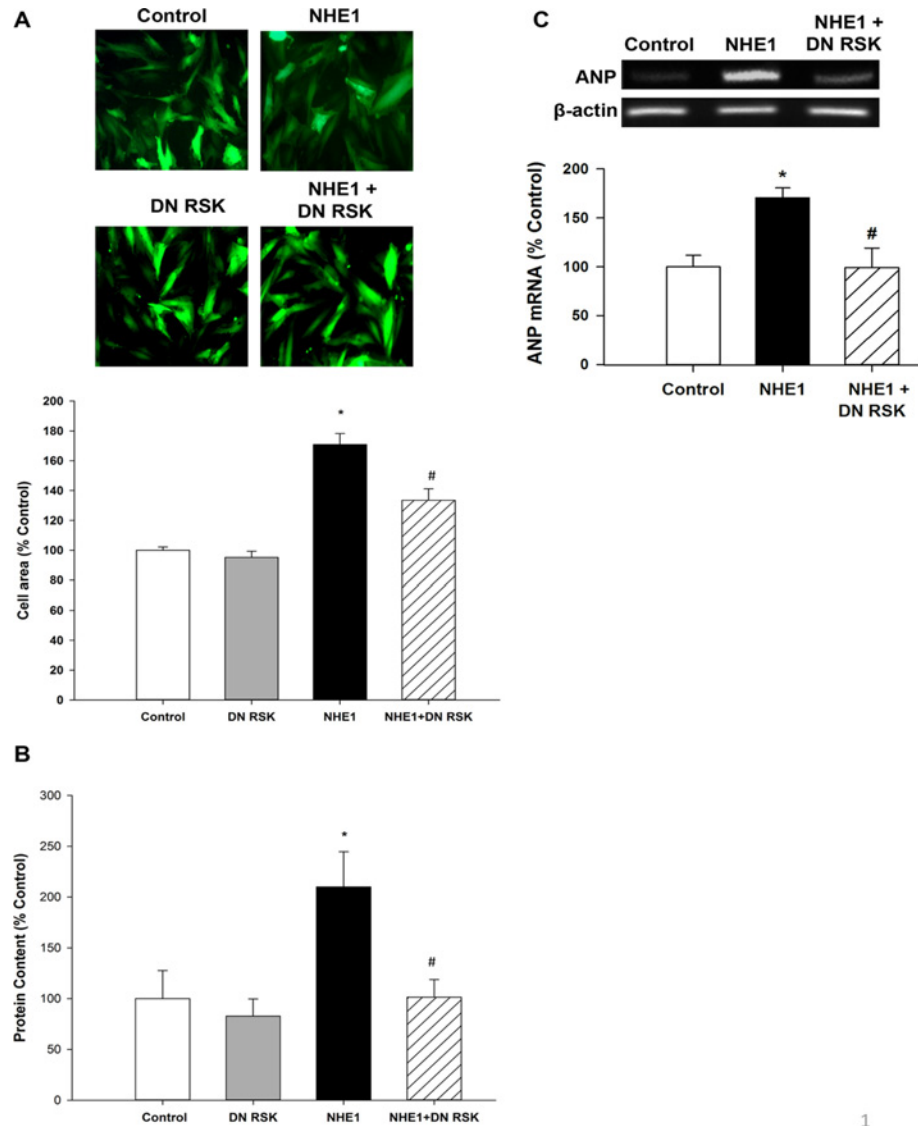


Fig 2. p90 Ribosomal S6 Kinase Mediates the NHE1 dependent hypertrophic response. Parameters of cardiomyocyte hypertrophy were analyzed in H9c2 cardiomyoblasts infected with either GFP (control), active NHE1, DN RSK or active NHE1 and DN RSK adenoviruses for 48 hours. **A**. Representative fluorescence microscopy images of H9c2 cardiomyoblasts infected with GFP (control), active NHE1, DN RSK or active NHE1 and DN RSK adenoviruses (*upper panel*). Quantification of surface cell area of H9c2 cardiomyoblasts infected with the GFP (control) active NHE1, DN RSK or active NHE1 and DN RSK adenoviruses (*lower panel*) (n = 6–7); **B**. Quantification of protein content of H9c2 cardiomyoblasts infected with the GFP (control), active NHE1, DN RSK or active NHE1 and DN RSK adenoviruses (n = 5–6); **C**. Representative agarose DNA gel showing ANP and β -actin. H9c2 cardiomyoblasts were either left untreated (control), or infected with active NHE1 or active NHE1 and DN RSK adenoviruses for 48 hours (*upper panel*). RNA extracted from H9c2 cardiomyoblasts was reverse transcribed and amplified using ANP and β -actin primers, respectively. Quantification of experiments measuring ANP mRNA expression normalized to β -actin in H9c2 cardiomyoblasts which were either left untreated (control) or infected with active NHE1 and DN RSK adenoviruses for 48 hours (*lower panel*) (n = 7). Results are expressed as % of control \pm SEM * P < 0.05 vs. control; # P < 0.05 vs. NHE1 infected group.

doi:10.1371/journal.pone.0122230.g002

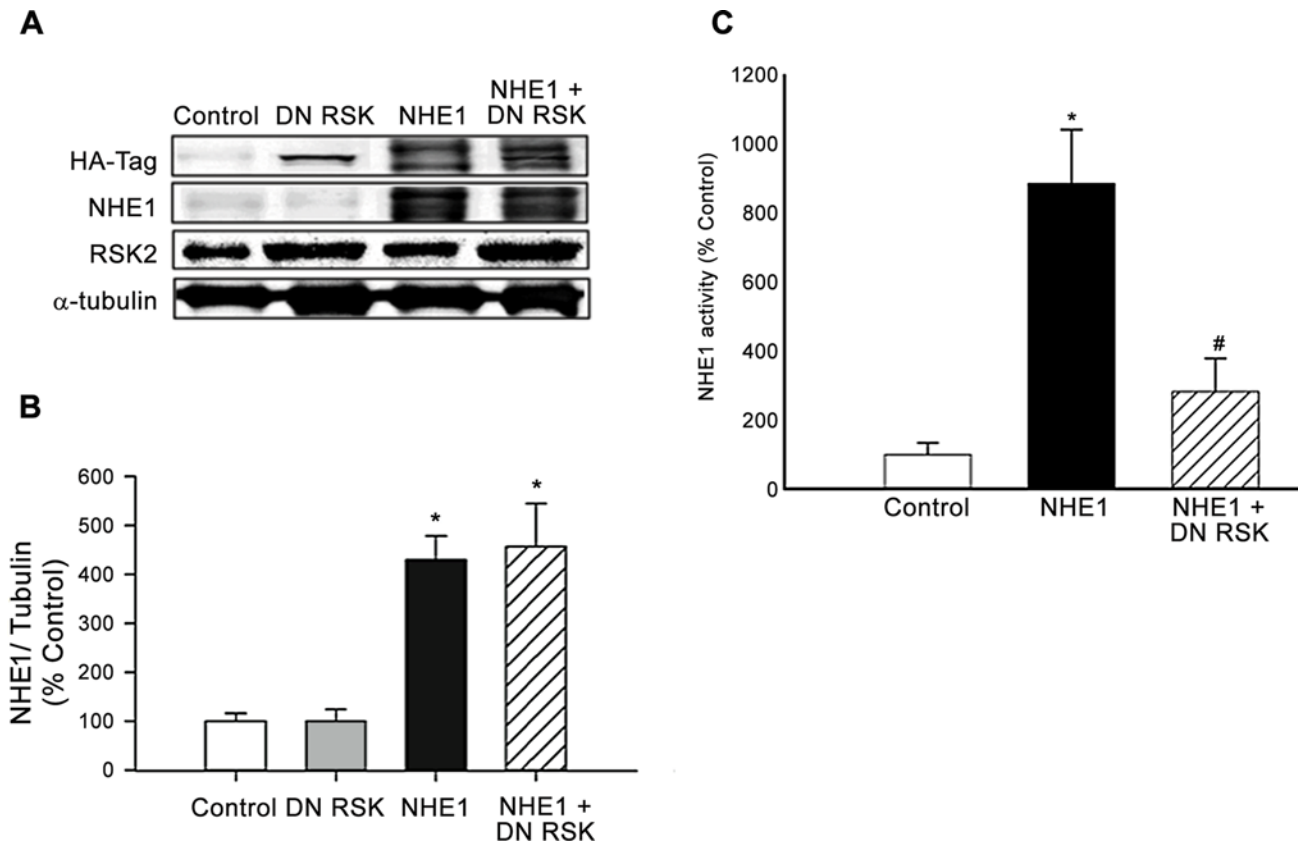


Fig 3. NHE1 protein expression and activity in H9c2 cardiomyoblasts infected with active NHE1 and DN RSK. Protein expression levels of total NHE1 protein in H9c2 cardiomyoblasts infected with either GFP (control), DN RSK, active NHE1 or active NHE1 and DN RSK adenoviruses. **A.** Representative western blot of H9c2 cardiomyoblasts infected with GFP (control), DN RSK, active NHE1 or active NHE1 and DN RSK adenoviruses for 48 hours. Immunoblotting was against HA-tag for the expression of exogenous RSK and NHE1, total NHE1 (90-110kDa), RSK2 (90kDa) or α -tubulin (50kDa); **B.** Quantification of experiments measuring total NHE1 protein expression, normalized to α -tubulin in H9c2 cardiomyoblasts infected with GFP (control), DN RSK, active NHE or active NHE1 and DN RSK adenoviruses for 48 hours (n = 5); **C.** Quantification of NHE1 activity of H9c2 cardiomyoblasts infected with GFP (control), active NHE1 or active NHE1 and DN RSK adenoviruses for 48 hours. NHE activity was calculated as the rate of recovery following induction of acid load (n = 5–6). All Results are expressed as % of control (GFP) \pm SEM. * $P < 0.05$ vs. control, # $P < 0.01$ vs. NHE1 infected group.

doi:10.1371/journal.pone.0122230.g003

49]. In a recent study, inhibition of RSK in NRVMs inhibited PE induced phosphorylation of GATA4 at Ser²⁶¹, ultimately leading to repression of fetal cardiac genes [26]. Similarly, previous reports have established that increased NHE1 activity leads to activation of the calcineurin/NFAT signaling pathway [50, 51], which was associated with enhanced GATA4 activation and nuclear translocation [51]. We have examined whether RSK modulates NHE1 induced hypertrophy via regulation of GATA4. GATA4 phosphorylation levels were significantly increased in NHE1 infected H9c2 cardiomyoblasts (266.56 \pm 26.69% vs. 100 \pm 33.8% control, $P < 0.01$), which was significantly reduced in the presence of the DN RSK adenovirus (127.31 \pm 32.9% of control, $P < 0.05$) compared to the NHE1 infected group (266.56 \pm 26.69% of control) (Fig. 4A and 4B). Similar findings were obtained with PE stimulation (100 μ M, 20 minutes); a significant increase in GATA4 relative phosphorylation (174.39 \pm 25.9% of control, $P < 0.05$) (Fig. 4C). This effect was reversed upon prior treatment with either BI-D1870 (91.5 \pm 7.3%, $P < 0.05$) or EMD (97.7 \pm 26.7%, $P < 0.05$) compared to PE alone (Fig. 4D). These results indicate for the first time that the key and novel role for RSK in the reduction of GATA4 phosphorylation and activation induced by active NHE1.

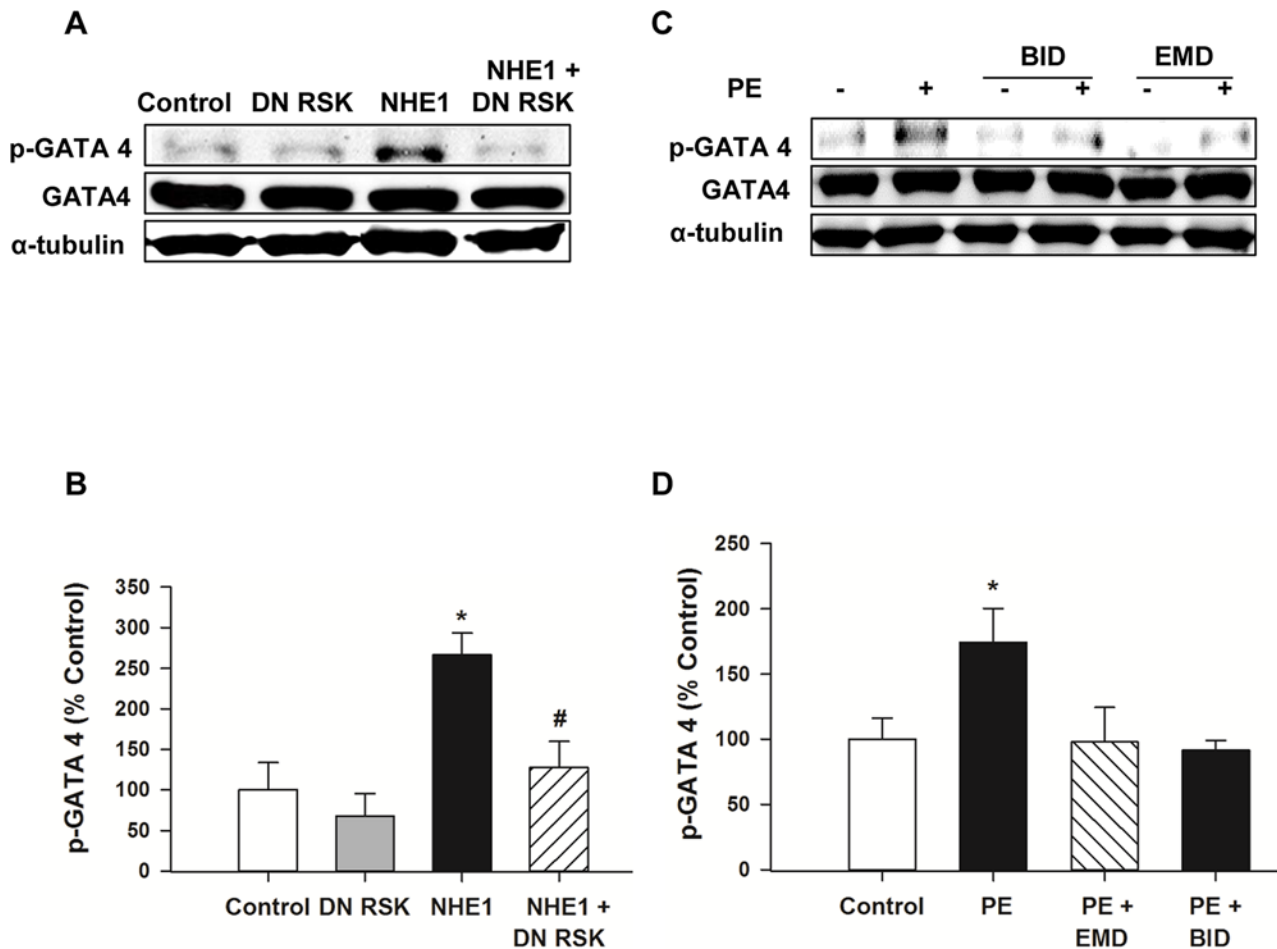


Fig 4. Inhibition of RSK attenuated GATA4 phosphorylation mediated by activation of NHE1. **A.** Representative western blot for H9c2 cardiomyoblasts infected with either GFP (control), DN RSK, active NHE1 or active NHE1 and DN RSK adenoviruses for 48 hours. Immunoblotting was against phosphorylated GATA4 (46kDa), total GATA4 (50kDa) or α -tubulin (50kDa); **B.** Quantification of experiments measuring the ratio of phosphorylated GATA4 to total GATA4 in H9c2 cardiomyoblasts infected with either GFP (control), DN RSK, active NHE1 or active NHE1 and DN RSK adenoviruses for 48 hours. Results are expressed as % of control \pm SEM (n = 5). * $P < 0.05$ vs. control. # $P < 0.05$ vs. NHE1 infected group. RSK or NHE1 inhibition attenuates PE induced GATA4 phosphorylation. H9c2 cardiomyoblasts were either untreated (control) or treated with PE (100 μ M for 20 minutes) in the presence and absence of either BID 1870 (10 μ M), or EMD (10 μ M) added 30 minutes prior to PE treatment (100 μ M); **C.** Representative western blot showing phosphorylated GATA4, total GATA4 and α -tubulin; **D.** Quantification of relative phosphorylation levels of GATA4. Results are expressed as % of control \pm SEM. * $P < 0.05$ vs. control, # $P < 0.05$ vs. NHE1 infected group.

doi:10.1371/journal.pone.0122230.g004

Discussion

The expression of constitutively active NHE1 and RSK has both been shown to individually contribute to the development and progression of CH [50, 52, 53]. Earlier studies have confirmed the central role of NHE1 in the regulation of MAPK activity in cardiac hypertrophy [54, 55]. However, no reports have directly investigated whether expression of active NHE1 induces RSK and how RSK contributes to the NHE1-mediated hypertrophic response in cardiomyocytes. The primary focus of this study was to investigate the potential contribution of RSK activation in mediating active NHE1 induced hypertrophy in cardiomyocytes and to further assess the underlying mechanism.

NHE1 and MAPK

Previous reports have demonstrated that the anti-hypertrophic effect of NHE1 inhibition (with EMD 87580) in PE treated NRVMs was found to be associated with prevention of MAPK activation [50]. More specifically, NHE1 inhibition has been shown to reduce stretch induced ERK1/2 activation in NRVMs [54] as well as activation of ERK1/2 in rat aortic smooth muscle cells following stimulation with ANG II or 5-hydroxytryptamine [18]. In our study, a transient increase in ERK1/2 phosphorylation was observed upon treatment of H9c2 cardiomyoblasts with PE for 5 minutes (S3 Fig), which was inhibited with prior treatment with EMD. In agreement with our study, Haworth RS et al has reported that sustained acidosis increases the activity of ERK, with peak activation after > 3 minutes [56]. The ability of NHE1 inhibition to attenuate ERK1/2 phosphorylation at 5 minutes is in agreement with a previous study showing that hyperglycemia-induced activation of ERK1/2 in NRVMs can be prevented through NHE1 inhibition cariporide [57]. Although ERK1/2 are central mediators of cardiac hypertrophy, direct inhibition of ERK1/2 has led to exacerbated cardiomyocyte death and impaired heart function [58]. Since RSK is the main downstream effector of ERK; it provided an attractive target for therapeutic intervention to avoid the deleterious side effects of inhibiting the upstream regulator, ERK1/2 [21]. In our study, we focused on phosphorylation of RSK and its involvement in mediating hypertrophy induced by active NHE1.

RSK consists of three principle isoforms (RSK 1, 2 and 3). These isoforms all bind to and are activated by ERK1/2. An additional isoform, RSK4 has been also identified. Yet, recent evidence suggests that it behaves in a typical manner in terms of its expression and function [22]. In our study, we focused on the RSK 2—DN RSK adenovirus. However, our conclusion does not exclude the role of other isoforms since the approach used to interfere with RSK activity was either the RSK 2—DN RSK or through a pharmacological inhibitor (BID 1870) [59], both of which could not fully identify the potential role of other RSK isoforms.

Previous studies have revealed that cellular RSK activity is increased in response to multiple hypertrophic stimuli, such as catecholamines (via α 1-adrenoceptors) [60–62], ANG II [41], endothelin-1 [62], oxidative stress [63] and ischemia/reperfusion [64]. Furthermore, RSK expression and activity appear to be increased in animal models of heart failure and in failing human myocardium [65, 66]. In NRVMs, nuclear fraction of RSK2 isoform was upregulated in response to hypertrophic stimuli of endothelin-1, ANG II and PE; where they played a significant role in early gene regulation in cardiomyocytes [67]. Previous reports have demonstrated that RSK phosphorylates NHE1 at Ser⁷⁰³ [20] and thereby mediates increased cardiac sarcolemmal NHE1 activity. In our study, we demonstrated that expression of active NHE1 in H9c2 cardiomyoblasts increases the phosphorylation levels of RSK upon infection of H9c2 cardiomyoblasts with the active NHE1 adenovirus, which was associated with hypertrophy. In addition, we demonstrated that NHE1 inhibition attenuated RSK phosphorylation stimulated with PE, suggesting for the first time that RSK phosphorylation is regulated by NHE1. Parameters of hypertrophy were significantly regressed upon concomitant infection of H9c2 cardiomyoblasts with active NHE1 and the DN RSK adenovirus, suggesting the involvement of RSK in the NHE1 induced hypertrophic response. The reduction of NHE1 activity upon co-infection of the NHE1 and DN RSK adenovirus suggests that a feedback loop exists and may in part be due to the inability of RSK to phosphorylate and activate NHE1.

NHE1 and Cellular pH

The functional coupling of NHE1 to the Na⁺/Ca²⁺ exchanger increases sarcoplasmic-reticular Ca²⁺ loading and release during intracellular acidosis, conditions associated with ischaemia-reperfusion and some forms of maladaptive hypertrophy [68]. In primary cultures of

cardiomyocytes, NHE1 has been shown to be elevated following the induction of transient as well as sustained acidosis in an effort to drive the reduction in cytosolic pH [28]. Sustained intracellular acidosis has also previously been demonstrated to activate both ERK and RSK [56], with peak activation achieved after >3 minutes. On the contrary, in our study, peak activation of RSK following PE stimulation occurred at 20 minutes, similar to the time needed to phosphorylate RSK by oxidative stress (H₂O₂) [69]. Despite the importance of NHE1 activity in driving a reduction in cytosolic pH, a previous report has demonstrated that the mechanism driving ERK1/2 [19], is not dependent on the ions transported via NHE1 [17]. Whether cellular pH contributes to the mechanism driving RSK phosphorylation downstream of NHE1 and contributing to the hypertrophic response remains to be identified. Future studies investigating the role of oxidative stress in mediating the NHE1-RSK cascade is also important, particularly since a previous report has demonstrated that the anti-hypertrophic effects of EMD are mediated by the reduction of ROS production, a mediator involved in RSK activation [70].

Possible role of GATA4 in NHE1 induced hypertrophy

GATA4 is an important transcription factor mediating cardiac hypertrophy. GATA4 is considered a key transcriptional regulator of numerous peptides synthesized in the heart, including ANP and BNP [71]. The activity of GATA4 is modulated through direct interactions and post

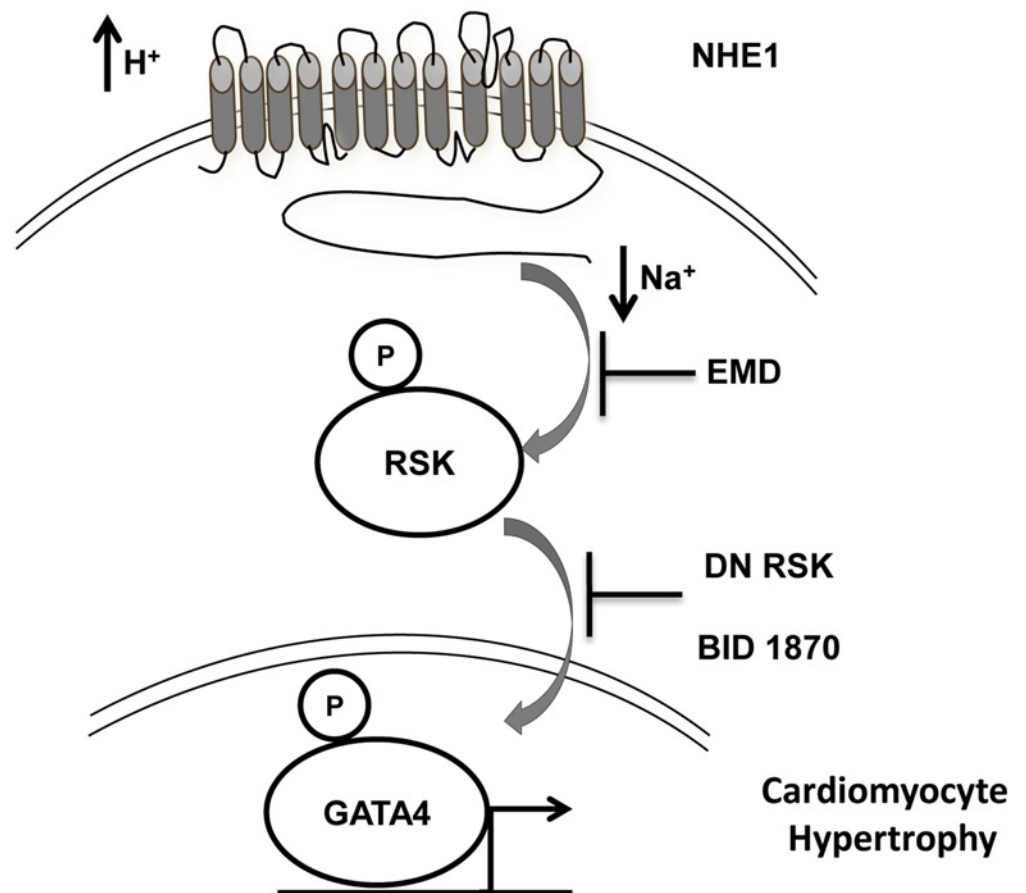


Fig 5. NHE1 induces phosphorylation and activation of RSK which would result in GATA4 phosphorylation. Leading to activation of transcription machinery and modulation of the hypertrophic pathway. Inhibition of RSK attenuates the NHE1 induced cardiomyocyte hypertrophic response.

doi:10.1371/journal.pone.0122230.g005

translational modifications including phosphorylation, acetylation and soumylations [72]. GATA4 can be phosphorylated by MAPKs in response to hypertrophic stimuli such as PE and endothelin-1, leading to increased transcriptional activity [48, 49]. In a recent study, inhibition of RSK in NRVMs inhibited PE induced phosphorylation of GATA4 at Ser²⁶¹, ultimately leading to repression of fetal cardiac genes [26]. Upon stimulation, RSK 2 isoform induce nuclear localization and activation of NFATc4 transcription activation complex [73]. Previous findings have established that increased NHE1 activity lead to activation of calcineurin/ NFAT signaling pathway [50, 51], which was associated with enhanced GATA4 activation and nuclear translocation [51]. In our model, the increase in GATA4 phosphorylation observed in response to expression of active NHE1 was significantly abrogated upon concomitant transfection with DN RSK. Similarly, we found a significant increase in phosphorylation of GATA4 following treatment with PE (20 minutes), which was significantly reduced with prior treatment with either RSK or NHE1 inhibitors. All these findings suggest that RSK lies down stream of NHE1, and regulates NHE1 induced cardiomyocyte hypertrophy through modulation of GATA4 phosphorylation (Fig. 5).

Our results show for the first time that NHE1 induced cardiomyocyte hypertrophy can be attributed to phosphorylation and activation of GATA4 secondary to active NHE1 induction of RSK activation.

Supporting Information

S1 Fig. Multiplicity of infection (MOI) and duration of NHE1 and DN RSK adenoviral infection in H9c2 cardiomyoblasts. Immunoblotting was against the HA-tag for *exogenous* NHE1 (90-110kDa) and RSK (90kDa) protein expression. **A.** Representative fluorescence microscopy images of H9c2 cardiomyoblasts infected with control (GFP), active NHE1 or DN RSK adenoviruses 48 hours post infection. An MOI of 20, 30 or 50 was used for GFP (control) and NHE1 adenoviruses, while an MOI of 200, 500 or 1000 was used for the DN RSK adenovirus; **B.** Representative western blot of H9c2 cardiomyoblasts infected with control (GFP) or active NHE1 (20, 30 or 50 MOIs) or DN RSK adenovirus (200, 500 or 1000 MOIs) 48 hours post infection (n = 3).

(TIF)

S2 Fig. Na⁺/H⁺ exchanger activity (NHE) is increased upon infection with the NHE1 adenovirus in H9c2 cardiomyoblasts. NHE activity was calculated as the rate of recovery following induction of acid load. **A.** Representative traces of NHE1 activity assays in H9c2 cardiomyoblasts infected with GFP (control) or active NHE1 48 hours post infection; **B.** Quantification of NHE1 activity (n = 5–6). Results are expressed as % of control (GFP)±SEM. *P<0.05 vs. control.

(TIF)

S3 Fig. Phenylephrine induced phosphorylation of extracellular regulated kinase (ERK). **A.** Representative western blot for H9c2 cardiomyoblasts treated with either vehicle, or with phenylephrine (PE) (100μM) in the absence and presence of EMD (10μM) added 30 minutes prior to PE (100μM) treatment for 5 minutes. Immunoblotting was against phosphorylated ERK and total ERK. The phosphorylated ERK was normalized to total ERK; **B.** Quantification of relative levels of phosphorylated ERK (n = 4). Results are expressed as % of control±SEM. *P<0.05 vs. control. #P<0.05 vs. PE treatment alone.

(TIF)

Acknowledgments

Mrs. Amy Barr (University of Alberta) was generous enough to assist in the preparation, precipitation, purification and determination of viral titer of the green fluorescent protein (GFP) and active NHE1 adenoviruses. DN RSK (K100A) was kindly provided by Professor M. Avkiran (King's College, London, UK).

Author Contributions

Conceived and designed the experiments: MJ FM. Performed the experiments: MJ BA FAS MM. Analyzed the data: MJ FM. Contributed reagents/materials/analysis tools: MJ IAM FM MM. Wrote the paper: MJ IAM FM.

References

1. World Health Organization Media Center, World Health Organization. 2013 [cited 2013 March]. Available: <http://www.who.int/mediacentre/factsheets/fs317/en/index.html>.
2. Jacob R, Brandle M, Dierberger B, Rupp H. Functional consequences of cardiac hypertrophy and dilatation. *Basic research in cardiology*. 1991; 86 Suppl 1:113–30. PMID: [1827978](#)
3. Marian AJ, Willerson JT, Wellens HJJ, Cohn JN, Holmes DR. *Cardiac hypertrophy*. Cardiovascular Medicine: Springer London; 2007. p. 1177–88.
4. Karmazyn M. Role of sodium-hydrogen exchange in cardiac hypertrophy and heart failure: a novel and promising therapeutic target. *Basic research in cardiology*. 2001; 96(4):325–8. PMID: [11518188](#)
5. Avkiran M, Marber MS. Na(+)/H(+) exchange inhibitors for cardioprotective therapy: progress, problems and prospects. *Journal of the american college of cardiology*. 2002; 39:747–53. PMID: [11869836](#)
6. Mraiche F, Oka T, Gan XT, Karmazyn M, Fliegel L. Activated NHE1 is required to induce early cardiac hypertrophy in mice. *Basic research in cardiology*. 2011; 106:603–16. doi: [10.1007/s00395-011-0161-4](#) PMID: [21359875](#)
7. Xue J, Mraiche F, Zhou D, Karmazyn M, Oka T, Fliegel L, et al. Elevated myocardial Na⁺/H⁺ exchanger isoform 1 activity elicits gene expression that leads to cardiac hypertrophy. *Physiological genomics*. 2010; 42:374–83. doi: [10.1152/physiolgenomics.00064.2010](#) PMID: [20460605](#)
8. Fliegel L. Regulation of the Na(+)/H(+) exchanger in the healthy and diseased myocardium. *Expert opinion on therapeutic targets*. 2008; 13:55–68.
9. Voelkl J, Lin Y, Alesutan I, Ahmed MS, Pasham V, Mia S, et al. Sgk1 sensitivity of Na(+)/H(+) exchanger activity and cardiac remodeling following pressure overload. *Basic research in cardiology*. 2012; 107:236. doi: [10.1007/s00395-011-0236-2](#) PMID: [22212557](#)
10. Huber JD, Bentzien J, Boyer SJ, Burke J, De Lombaert S, Eickmeier C, et al. Identification of a potent sodium hydrogen exchanger isoform 1 (NHE1) inhibitor with a suitable profile for chronic dosing and demonstrated cardioprotective effects in a preclinical model of myocardial infarction in the rat. *Journal of medicinal chemistry*. 2012; 55:7114–40. doi: [10.1021/jm300601d](#) PMID: [22803959](#)
11. Kilic A, Velic A, De Windt LJ, Fabritz L, Voss M, Mitko D, et al. Enhanced activity of the myocardial Na⁺/H⁺ exchanger (NHE-1) contributes to cardiac remodeling in atrial natriuretic peptide receptor-deficient mice. *Circulation*. 2005; 112:2307–17. PMID: [16216978](#)
12. Mraiche F, Fliegel L. Elevated expression of activated Na(+)/H(+) exchanger protein induces hypertrophy in isolated rat neonatal ventricular cardiomyocytes. *Molecular and cellular biochemistry*. 2011; 358(1–2):179–87.
13. Shibata M, Takeshita D, Obata K, Mitsuyama S, Ito H, Zhang GX, et al. NHE-1 participates in isoproterenol-induced downregulation of SERCA2a and development of cardiac remodeling in rat hearts. *American journal of physiology heart and circulatory physiology*. 2011; 301(5):H2154–60. doi: [10.1152/ajpheart.00483.2011](#) PMID: [21856903](#)
14. Ennis IL, Escudero EM, Console GM, Camihort G, Dumm CG, Seidler RW, et al. Regression of isoproterenol-induced cardiac hypertrophy by Na⁺/H⁺ exchanger inhibition. *Hypertension*. 2003; 41(6):1324–9. PMID: [12732584](#)
15. Ennis IL, Escudero EM, Console GM, Camihort G, Dumm CG, Seidler RW, et al. Regression of isoproterenol-induced cardiac hypertrophy by Na⁺/H⁺ exchanger inhibition. *Hypertension*. 2003; 41:1324–9. PMID: [12732584](#)

16. Yoshida H, Karmazyn M. Na⁽⁺⁾/H⁽⁺⁾ exchange inhibition attenuates hypertrophy and heart failure in 1-wk postinfarction rat myocardium. *American journal of physiology heart and circulatory physiology*. 2000; 278(1):H300–4. PMID: [10644613](#)
17. Pedersen SF, Darborg BV, Rentsch ML, Rasmussen M. Regulation of mitogen-activated protein kinase pathways by the plasma membrane Na⁺/H⁺ exchanger, NHE1. *Archives of biochemistry and biophysics*. 2007; 462(2):195–201. PMID: [17321481](#)
18. Mukhin YV, Garnovskaya MN, Ullian ME, Raymond JR. ERK is regulated by sodium-proton exchanger in rat aortic vascular smooth muscle cells. *The Journal of biological chemistry*. 2003; 279:1845–52. PMID: [14600156](#)
19. Abe J, Baines CP, Berk BC. Role of mitogen-activated protein kinases in ischemia and reperfusion injury: the good and the bad. *Circulation research*. 2000; 86:607–9. PMID: [10746992](#)
20. Takahashi E, Abe J, Gallis B, Aebersold R, Spring DJ, Krebs EG, et al. p90(RSK) is a serum-stimulated Na⁺/H⁺ exchanger isoform-1 kinase. Regulatory phosphorylation of serine 703 of Na⁺/H⁺ exchanger isoform-1. *The Journal of biological chemistry*. 1999; 274:20206–14. PMID: [10400637](#)
21. Anjum R, Blenis J. The RSK family of kinases: emerging roles in cellular signalling. *Nature reviews Molecular cell biology*. 2008; 9(10):747–58. doi: [10.1038/nm2509](#) PMID: [18813292](#)
22. Avkiran M, Cook AR, Cuello F. Targeting Na⁺/H⁺ exchanger regulation for cardiac protection: a RSKy approach? *Current opinion in pharmacology*. 2008; 8(2):133–40. doi: [10.1016/j.coph.2007.12.007](#) PMID: [18222727](#)
23. Zhang Z, Liu R, Townsend P, Proud C. p90RSKs mediate the activation of ribosomal RNA synthesis by the hypertrophic agonist phenylephrine in adult cardiomyocytes. *Journal of molecular and cellular cardiology*. 2013; 59:139–47. doi: [10.1016/j.yjmcc.2013.03.006](#) PMID: [23510923](#)
24. Laverriere AC, MacNeill C, Mueller C, Poelmann RE, Burch JB, Evans T. GATA-4/5/6, a subfamily of three transcription factors transcribed in developing heart and gut. *The Journal of biological chemistry*. 1994; 269(37):23177–84. PMID: [8083222](#)
25. Liang Q, Wiese RJ, Bueno OF, Dai YS, Markham BE, Molkentin JD. The transcription factor GATA4 is activated by extracellular signal-regulated. *Molecular and cellular biology*. 2001; 21(21):7460–9. PMID: [11585926](#)
26. Li T, Liu Z, Hu X, Ma K, Zhou C. Involvement of ERK-RSK cascade in phenylephrine-induced phosphorylation of GATA4. *Biochimica et biophysica acta*. 2012; 1823(2):582–92. doi: [10.1016/j.bbamcr.2011.12.009](#) PMID: [22227582](#)
27. Zordoky BN, El-Kadi AO. H9c2 cell line is a valuable *in vitro* model to study the drug metabolizing enzymes in the heart. *Journal of pharmacological and toxicological methods*. 2007; 56:317–22. PMID: [17662623](#)
28. Coccaro E, Karki P, Cojocaru C, Fliegel L. Phenylephrine and sustained acidosis activate the neonatal rat cardiomyocyte Na⁺/H⁺ exchanger through phosphorylation of amino acids Ser770 and Ser771. *American journal of physiology heart and circulatory physiology*. 2009; 297(2):H846–58. doi: [10.1152/ajpheart.01231.2008](#) PMID: [19542484](#)
29. Mraiche F, Oka T, Gan XT, Karmazyn M, Fliegel L. Activated NHE1 is required to induce early cardiac hypertrophy in mice. *Basic research in cardiology*. 2011; 106(4):603–16. doi: [10.1007/s00395-011-0161-4](#) PMID: [21359875](#)
30. Cuello F, Snabaitis AK, Cohen MS, Taunton J, Avkiran M. Evidence for direct regulation of myocardial Na⁺/H⁺ exchanger isoform 1 phosphorylation and activity by 90-kDa ribosomal S6 kinase (RSK): effects of the novel and specific RSK inhibitor fmk on responses to alpha1-adrenergic stimulation. *Molecular pharmacology*. 2006; 71:799–806. PMID: [17142297](#)
31. Chrestensen CA, Sturgill TW. Characterization of the p90 ribosomal S6 kinase 2 carboxyl-terminal domain as a protein kinase. *The Journal of biological chemistry*. 2002; 277:27733–41. PMID: [12016217](#)
32. Lu Z, Abe J, Taunton J, Lu Y, Shishido T, McClain C, et al. Reactive oxygen species-induced activation of p90 ribosomal S6 kinase prolongs cardiac repolarization through inhibiting outward K⁺ channel activity. *Circulation research*. 2008; 103:269–78. doi: [10.1161/CIRCRESAHA.107.166678](#) PMID: [18599872](#)
33. Coccaro E, Karki P, Cojocaru C, Fliegel L. Phenylephrine and sustained acidosis activate the neonatal rat cardiomyocyte Na⁺/H⁺ exchanger through phosphorylation of amino acids Ser770 and Ser771. *American journal of physiology Heart and circulatory physiology*. 2009; 297:H846–58. doi: [10.1152/ajpheart.01231.2008](#) PMID: [19542484](#)
34. Merten KE, Jiang Y, Feng W, Kang YJ. Calcineurin activation is not necessary for Doxorubicin-induced hypertrophy in H9c2 embryonic rat cardiac cells: involvement of the phosphoinositide 3-kinase-Akt pathway. *Journal of pharmacology and experimental therapeutics*. 2006; 319(2):934–40. PMID: [16926266](#)

35. Xue J, Mraiche F, Zhou D, Karmazyn M, Oka T, Fliegel L, et al. Elevated myocardial Na⁺/H⁺ exchanger isoform 1 activity elicits gene expression that leads to cardiac hypertrophy. *Physiological genomics*. 2010; 42(3):374–83. doi: [10.1152/physiolgenomics.00064.2010](https://doi.org/10.1152/physiolgenomics.00064.2010) PMID: [20460605](https://pubmed.ncbi.nlm.nih.gov/20460605/)
36. Voelkl J, Lin Y, Alesutan I, Ahmed M, Pasham V, Mia S, et al. Sgk1 sensitivity of Na⁺/H⁺ exchanger activity and cardiac remodeling following pressure overload. *Basic Research in Cardiology C7–236*. 2012; 107(2):1–15. PMID: [2091607](https://pubmed.ncbi.nlm.nih.gov/2091607/)
37. Voelkl J, Pasham V, Ahmed MS, Walker B, Szteyn K, Kuhl D, et al. Sgk1-dependent stimulation of cardiac Na⁺/H⁺ exchanger by dexamethasone. *Cellular Physiology and Biochemistry*. 2013; 32(1): 25–38. doi: [10.1159/000350120](https://doi.org/10.1159/000350120) PMID: [23860121](https://pubmed.ncbi.nlm.nih.gov/23860121/)
38. Young M, Funder J. Mineralocorticoid action and sodium-hydrogen exchange: studies in experimental cardiac fibrosis. *Endocrinology*. 2003; 144(9):3848–51. PMID: [12933657](https://pubmed.ncbi.nlm.nih.gov/12933657/)
39. Takeishi Y, Huang Q, Abe J, Che W, Lee JD, Kawakatsu H, et al. Activation of mitogen-activated protein kinases and p90 ribosomal S6 kinase in failing human hearts with dilated cardiomyopathy. *Cardiovascular research*. 2002; 53(1):131–7. PMID: [11744021](https://pubmed.ncbi.nlm.nih.gov/11744021/)
40. Yamazaki T, Komuro I, Kudoh S, Zou Y, Shiojima I, Mizuno T, et al. Mechanical stress activates protein kinase cascade of phosphorylation in neonatal rat cardiac myocytes. *The Journal of clinical investigation*. 1995; 96:438–46. PMID: [7615816](https://pubmed.ncbi.nlm.nih.gov/7615816/)
41. Takahashi E, Abe J, Berk BC. Angiotensin II stimulates p90RSK in vascular smooth muscle cells: A potential Na⁺/H⁺ exchanger kinase. *Circulation research*. 1997; 81:268–73. PMID: [9242188](https://pubmed.ncbi.nlm.nih.gov/9242188/)
42. Yamazaki T, Komuro I, Yazaki Y. Molecular aspects of mechanical stress-induced cardiac hypertrophy. *Molecular and cellular biochemistry*. 1996; 163-164(1):197–201.
43. Xu ZL, Jun-ichi A, Jack T, Yan L, Tetsuro S, Carolyn M, et al. Reactive oxygen species-induced activation of p90 ribosomal S6 kinase prolongs cardiac repolarization through inhibiting outward K⁺ channel activity. *Circulation research*. 2008; 103(3):269–78. doi: [10.1161/CIRCRESAHA.107.166678](https://doi.org/10.1161/CIRCRESAHA.107.166678) PMID: [18599872](https://pubmed.ncbi.nlm.nih.gov/18599872/)
44. Seko Y, Tobe K, Ueki K, Kadowaki T, Yazaki Y. Hypoxia and hypoxia/reoxygenation activate Raf-1, mitogen-activated protein kinase kinase, mitogen-activated protein kinases, and S6 kinase in cultured rat cardiac myocytes. *Circulation research*. 1996; 78(1):82–90. PMID: [8603510](https://pubmed.ncbi.nlm.nih.gov/8603510/)
45. Le NT, Takei Y, Shishido T, Woo CH, Chang E, Heo KS, et al. p90RSK targets the ERK5-CHIP ubiquitin E3 ligase activity in diabetic hearts and promotes cardiac apoptosis and dysfunction. *Circulation research*. 2012; 110(4):536–50. doi: [10.1161/CIRCRESAHA.111.254730](https://doi.org/10.1161/CIRCRESAHA.111.254730) PMID: [22267842](https://pubmed.ncbi.nlm.nih.gov/22267842/)
46. Fang L, Moore XL, Gao XM, Dart AM, Lim YL, Du XJ. Down-regulation of mitofusin-2 expression in cardiac hypertrophy *in vitro* and *in vivo*. *Life sciences*. 2007; 80:2154–60. PMID: [17499311](https://pubmed.ncbi.nlm.nih.gov/17499311/)
47. Chen S, Mackintosh C. Differential regulation of NHE1 phosphorylation and glucose uptake by inhibitors of the ERK pathway and p90RSK in 3T3-L1 adipocytes. *Cellular signalling*. 2009; 21:1984–93. doi: [10.1016/j.cellsig.2009.09.009](https://doi.org/10.1016/j.cellsig.2009.09.009) PMID: [19765648](https://pubmed.ncbi.nlm.nih.gov/19765648/)
48. Molkenin QL, Russell JW, Orlando FB, Yan-Shan D, Bruce EM, Jeffery D. The transcription factor GATA4 is activated by extracellular signal-regulated kinase 1- and 2-mediated phosphorylation of serine 105 in cardiomyocytes. *Molecular and cellular biology*. 2001; 21(21):7460–9. PMID: [11585926](https://pubmed.ncbi.nlm.nih.gov/11585926/)
49. Tenhunen O, Sárman B, Kerkelä R, Szokodi I, Papp L, Tóth M, et al. Mitogen-activated protein kinases p38 and ERK 1/2 mediate the wall stress-induced activation of GATA-4 binding in adult heart. *The journal of biological chemistry*. 2004; 279(23):24852–60. PMID: [15051723](https://pubmed.ncbi.nlm.nih.gov/15051723/)
50. Javadov S, Baetz D, Rajapurohitam V, Zeidan A, Kirshenbaum LA, Karmazyn M. Antihypertrophic effect of Na⁺/H⁺ exchanger isoform 1 inhibition is mediated by reduced mitogen-activated protein kinase activation secondary to improved mitochondrial integrity and decreased generation of mitochondrial-derived reactive oxygen species. *The Journal of pharmacology and experimental therapeutics*. 2006; 317:1036–43. PMID: [16513848](https://pubmed.ncbi.nlm.nih.gov/16513848/)
51. Gan XT, Gong XQ, Xue J, Haist JV, Bai D, Karmazyn M. Sodium-hydrogen exchange inhibition attenuates glycoside-induced hypertrophy in rat ventricular myocytes. *Cardiovascular research*. 2009; 85:79–89.
52. Nakamura TY, Iwata Y, Arai Y, Komamura K, Wakabayashi S. Activation of Na⁺/H⁺ exchanger 1 is sufficient to generate Ca²⁺ signals that induce cardiac hypertrophy and heart failure. *Circulation research*. 2008; 103:891–9. doi: [10.1161/CIRCRESAHA.108.175141](https://doi.org/10.1161/CIRCRESAHA.108.175141) PMID: [18776042](https://pubmed.ncbi.nlm.nih.gov/18776042/)
53. Baartscheer A, Schumacher CA, van Borren MM, Belterman CN, Coronel R, Fiolet JW. Increased Na⁺/H⁺-exchange activity is the cause of increased [Na⁺]_i, and underlies disturbed calcium handling in the rabbit pressure and volume overload heart failure model. *Cardiovascular research*. 2003; 57:1015–24. PMID: [12650879](https://pubmed.ncbi.nlm.nih.gov/12650879/)

54. Takewaki S, Kuro-o M, Hiroi Y, Yamazaki T, Noguchi T, Miyagishi A, et al. Activation of Na⁺-H⁺ Antipporter (NHE-1) gene expression during growth, hypertrophy and proliferation of the rabbit cardiovascular system. 1995; 27:729–42. PMID: [7760389](#)
55. Yamazaki T, Komuro I, Kudoh S, Zou Y, Nagai R, Aikawa R, et al. Role of ion channels and exchangers in mechanical stretch-induced cardiomyocyte hypertrophy. *Circulation research*. 1998; 82(4):430–37. PMID: [9506703](#)
56. Haworth RS, McCann C, Snabaitis AK, Roberts NA, Avkiran M. Stimulation of the plasma membrane Na⁺/H⁺ exchanger NHE1 by sustained intracellular acidosis. Evidence for a novel mechanism mediated by the ERK pathway. *The Journal of biological chemistry*. 2003; 278(34):31676–84. PMID: [12791686](#)
57. Chen S, Khan ZA, Karmazyn M, Chakrabarti S. Role of endothelin-1, sodium hydrogen exchanger-1 and mitogen activated protein kinase (MAPK) activation in glucose-induced cardiomyocyte hypertrophy. *Diabetes/metabolism research and reviews*. 2007; 23:356–67. PMID: [17024690](#)
58. Ruppert C, Deiss K, Herrmann S, Vidal M, Oezkur M, Gorski A, et al. Interference with ERK(Thr188) phosphorylation impairs pathological but not physiological cardiac hypertrophy. *Proceedings of the national academy of sciences of the United States of America*. 2013; 110:7440–5. doi: [10.1073/pnas.1221999110](#) PMID: [23589880](#)
59. Sapkota GP, Cummings L, Newell FS, Armstrong C, Bain J, Frodin M, et al. BI-D1870 is a specific inhibitor of the p90 RSK (ribosomal S6 kinase) isoforms *in vitro* and *in vivo*. *The Biochemical journal*. 4012007. p. 29–38. PMID: [17040210](#)
60. Snabaitis AK, Yokoyama H, Avkiran M. Roles of mitogen-activated protein kinases and protein kinase C in alpha(1A)-adrenoceptor-mediated stimulation of the sarcolemmal Na(+)-H(+) exchanger. *Circulation research*. 2000; 86:214–20. PMID: [10666418](#)
61. Maekawa N, Abe J, Shishido T, Itoh S, Ding B, Sharma VK, et al. Inhibiting p90 ribosomal S6 kinase prevents Na⁺-H⁺ exchanger-mediated cardiac ischemia-reperfusion injury. *Circulation*. 2006; 113:2516–23. PMID: [16717153](#)
62. Snabaitis AK, Muntendorf A, Wieland T, Avkiran M. Regulation of the extracellular signal-regulated kinase pathway in adult myocardium: differential roles of G(q/11), Gi and G(12/13) proteins in signalling by alpha1-adrenergic, endothelin-1 and thrombin-sensitive protease-activated receptors. *Cellular signalling*. 2005; 17:655–64. PMID: [15683740](#)
63. Snabaitis AK, Hearse DJ, Avkiran M. Regulation of sarcolemmal Na(+)/H(+) exchange by hydrogen peroxide in adult rat ventricular myocytes. *Cardiovascular research*. 2002; 53:470–80. PMID: [11827698](#)
64. Takeishi Y, Abe J, Lee JD, Kawakatsu H, Walsh RA, Berk BC. Differential regulation of p90 ribosomal S6 kinase and big mitogen-activated protein kinase 1 by ischemia/reperfusion and oxidative stress in perfused guinea pig hearts. *Circulation research*. 1999; 85(12):1164–72. PMID: [10590243](#)
65. Takeishi Y, Huang Q, Abe J, Che W, Lee JD, Kawakatsu H, et al. Activation of mitogen-activated protein kinases and p90 ribosomal S6 kinase in failing human hearts with dilated cardiomyopathy. *Cardiovascular research*. 2001; 53:131–7.
66. Takeishi Y, Huang Q, Abe J, Glassman M, Che W, Lee JD, et al. Src and multiple MAP kinase activation in cardiac hypertrophy and congestive heart failure under chronic pressure-overload: comparison with acute mechanical stretch. *Journal of molecular and cellular cardiology*. 2001; 33:1637–48. PMID: [11549343](#)
67. Amirak E, Fuller SJ, Sugden PH, Clerk A. p90 ribosomal S6 kinases play a significant role in early gene regulation in the cardiomyocyte response to G(q)-protein-coupled receptor stimuli, endothelin-1 and alpha(1)-adrenergic receptor agonists. *The Biochemical journal*. 2012; 450:351–63.
68. Garcarena CD, Youm JB, Swietach P, Vaughan-Jones RD. H(+)-activated Na(+) influx in the ventricular myocyte couples Ca(2)(+)-signalling to intracellular pH. *Journal of molecular and cellular cardiology*. 2013; 61:51–9. doi: [10.1016/j.yjmcc.2013.04.008](#) PMID: [23602948](#)
69. Itoh S, Ding B, Bains CP, Wang N, Takeishi Y, Jalili T, et al. Role of p90 ribosomal S6 kinase (p90RSK) in reactive oxygen species and protein kinase C beta (PKC-beta)-mediated cardiac troponin I phosphorylation. *The Journal of biological chemistry*. 2005; 280(25):24135–42. PMID: [15840586](#)
70. Javadov S, Baetz D, Rajapurohitam V, Zeidan A, Kirshenbaum LA, Karmazyn M. Antihypertrophic effect of Na⁺/H⁺ exchanger isoform 1 inhibition is mediated by reduced mitogen-activated protein kinase activation secondary to improved mitochondrial integrity and decreased generation of mitochondrial-derived reactive oxygen species. *The Journal of pharmacology and experimental therapeutics*. 2006; 317(3):1036–43. PMID: [16513848](#)
71. Motte S, McEntee K, Naeije R. Endothelin receptor antagonists. *Pharmacology and Therapeutics*. 2006; 110:386–414. PMID: [16219361](#)

72. Suzuki YJ. Cell signalling pathways for the regulation of GATA4 transcription factor: Implications for cell growth and apoptosis. *Cellular signalling*. 2011; 23:1094–9. doi: [10.1016/j.cellsig.2011.02.007](https://doi.org/10.1016/j.cellsig.2011.02.007) PMID: [21376121](https://pubmed.ncbi.nlm.nih.gov/21376121/)
73. Yang TT, Xiong Q, Graef IA, Crabtree GR, Chow CW. Recruitment of the extracellular signal-regulated kinase/ribosomal S6 kinase signaling pathway to the NFATc4 transcription activation complex. *Molecular and Cellular Biology*. 2005; 25(3):907–20. PMID: [15657420](https://pubmed.ncbi.nlm.nih.gov/15657420/)