

RESEARCH ARTICLE | JULY 01 2015

Ferromagnetic effects for nanofluid venture through composite permeable stenosed arteries with different nanosize particles

Noreen Sher Akbar; M. T. Mustafa



AIP Advances 5, 077102 (2015)

<https://doi.org/10.1063/1.4926342>



31 July 2024 11:12:44



AIP Advances

Special Topic: Machine Vision, Optical Sensing and Measurement

Submit Today



Ferromagnetic effects for nanofluid venture through composite permeable stenosed arteries with different nanosize particles

Noreen Sher Akbar^{1,a} and M. T. Mustafa²

¹*DBS&H, CEME, National University of Sciences and Technology, Islamabad, Pakistan*

²*Department of Mathematics, Statistics and Physics, Qatar University, Doha 2713, Qatar*

(Received 15 March 2015; accepted 15 June 2015; published online 1 July 2015)

In the present article ferromagnetic field effects for copper nanoparticles for blood flow through composite permeable stenosed arteries is discussed. The copper nanoparticles for the blood flow with water as base fluid with different nanosize particles is not explored upto yet. The equations for the Cu-water nanofluid are developed first time in literature and simplified using long wavelength and low Reynolds number assumptions. Exact solutions have been evaluated for velocity, pressure gradient, the solid volume fraction of the nanoparticles and temperature profile. Effect of various flow parameters on the flow and heat transfer characteristics are utilized. © 2015 Author(s). All article content, except where otherwise noted, is licensed under a Creative Commons Attribution 3.0 Unported License. [<http://dx.doi.org/10.1063/1.4926342>]

INTRODUCTION

The study of blood flow of non-Newtonian fluids in a stenosed artery is very useful topic because of the fact that number of cardiovascular diseases in the blood vessel such as hearts attacks and strokes are the leading cause of deaths. In cardiac related problems, the effected arteries get harden as a result of accumulation of fatty substances inside the lumen. These accumulations of substances in arteries known as stenosis. For last couple of decades, researcher have become interested to model the blood flow in stenosed arteries experimentally and theoretically. A number of theoretical studies related to the blood flow through stenosis arteries have been carried out recently in which most of the studies focused in presence of mild or single stenosis as discussed by Chakravarty and Mandal.^{1,2} A mathematical analysis for the flow in arteries in the presence of stenosis is studied by Mishra and Chakravarty.³ Herschel Bulkely fluid in stenosed arteries has been examined by Sankar and Lee.⁴ The mathematical modelling done by them was for pulsatile flow. They used regular perturbation technique and found analytical solutions. They have also made the comparison of their results with the Newtonian behavior of blood flow in their article. Oscillatory type blood flow through stenosed arteries with three layered is studied by Tripathi.⁵ Mekheimer and Kot⁶ in this regards discussed the mathematical modelling of a non-Newtonian fluid through an anisotropically tapered elastic artery with time variant overlapping stenosis. Non-Newtonian behaviour of blood is also discussed by, Mishra et al.⁷ They have presented the blood flow through a composite stenosis in an artery with permeable walls. Very recently Akbar and Butt⁸ presented magnetic field effects for copper suspended nanofluid venture through a composite stenosed arteries with permeable wall. Further recent literature related to the topic could be seen through. Refs. 9–12.

A Nanofluid is a fluid containing nanometer-sized particles, called nanoparticles. These fluids are engineered colloidal suspensions of nanoparticles in a base fluid. The nanoparticles used in nanofluids are typically made of metals, oxides, carbides, or carbon nanotubes. Nanofluids have their huge applications in heat transfer, like microelectronics, fuel cells, pharmaceutical processes,

^aCorresponding author: E-mail: noreensher1@gmail.com (Noreen Sher Akbar)

and hybrid-powered engines, domestic refrigerator, chiller, nuclear reactor coolant, grinding and space technology etc extensive literature is available which deals with the study of nanofluid and its applications.^{13–21} Maxwell²² and further developed Hamilton and Crosser model²³ to take into account irregular particle geometries by introducing a shape factor. According to this model, when the thermal conductivity of the nanoparticles is 100 times larger than that of the base fluid. They gives that tha particle can be of shape like bricks, cylinder and platelets. Keep in mind the Maxwell²² and Hamilton and Crosser model²³ Ellahi et al.²⁴ discussed the shape effects of nanosize particles in Cu-H₂o nanofluid on entropy generation. Further related literature can be viewed through Refs. 25–27.

According to the authors knowledge the shape effects of nanosize particles for the blood flow with water as base fluid is not explored so far. To fill this gap i here discussed shape effects of nano-size particles for the blood flow through composite stenosis in arteries with permeable wall. In the next section we present formulation of the problem. Section three gives solutions of the problem. In section four we discussed physical significance of the problem through graphs and discussion. Last section contains the summary of the present work.

FORMULATION OF THE PROBLEM

Consider an axisymmetric flow of blood through a composite stenosis in a circular tube of finite length L , with permiable wall as shown in Fig. 1. The geometry of arterial wall with composite stenosis is described by⁸

$$\frac{R(z)}{R_0} = \begin{cases} 1 - \frac{2\delta}{R_0 L_0} (z - d); & d < z \leq d + \frac{L_0}{2}, \\ 1 - \frac{\delta}{2R_0} \left(1 + \cos \frac{2\pi}{L_0} \left(z - d - \frac{L_0}{2} \right) \right); & d + \frac{L_0}{2} < z \leq d + L_0, \\ 1; & \text{otherwise.} \end{cases} \tag{1}$$

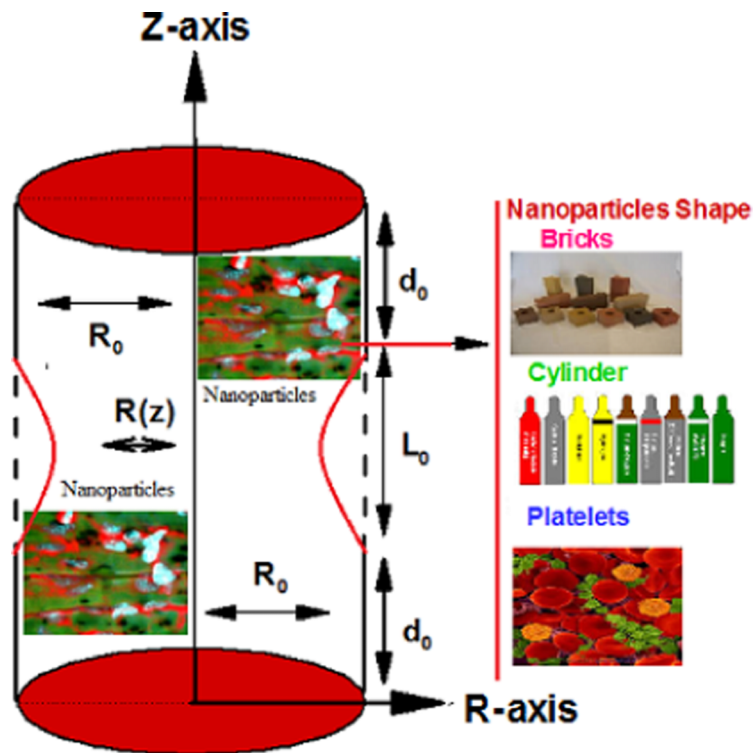


FIG. 1. Geometry of the problem.

where $R(z)$ is the radius of the artery in the obstructed region while R_0 is the radius of normal artery. L_0 , d , δ are the length, location and height of the stenosis respectively.

The governing equations for an incompressible nanofluid can be written as:

$$\frac{1}{r} \frac{\partial (rv)}{\partial r} + \frac{\partial u}{\partial z} = 0, \quad (2)$$

$$\rho_{nf} \left(v \frac{\partial v}{\partial r} + u \frac{\partial v}{\partial z} \right) = -\frac{\partial p}{\partial r} + \mu_{nf} \frac{\partial}{\partial r} \left(2 \frac{\partial v}{\partial r} \right) + \mu_{nf} \frac{\partial}{\partial z} \left(2 \frac{\partial v}{\partial z} + \frac{\partial u}{\partial r} \right), \quad (3)$$

$$\rho_{nf} \left(v \frac{\partial u}{\partial r} + u \frac{\partial u}{\partial z} \right) = -\frac{\partial p}{\partial z} + \mu_{nf} \frac{\partial}{\partial z} \left(2 \frac{\partial u}{\partial z} \right) + \frac{\mu_{nf}}{r} \frac{\partial}{\partial r} \left[r \left(\frac{\partial v}{\partial z} + \frac{\partial u}{\partial r} \right) \right] + \rho_{nf} g \alpha (\bar{T} - T_0) - \sigma B_0^2 u, \quad (4)$$

$$(\rho c_p)_{nf} \left(v \frac{\partial T}{\partial r} + u \frac{\partial T}{\partial z} \right) = k_{nf} \left[\frac{\partial^2 T}{\partial r^2} + \frac{1}{r} \frac{\partial T}{\partial r} + \frac{\partial^2 T}{\partial z^2} \right] + Q_0. \quad (5)$$

with the conditions:

$$\frac{\partial u}{\partial r} = 0, \quad \frac{\partial T}{\partial r} = 0 \quad \text{at } r = 0, \quad (5a)$$

$$u = u_B, \quad T = T_0, \quad \text{at } r = \frac{R(z)}{R_0}. \quad (5b)$$

where r and z are the coordinates. z is taken as the center line of the tube and r transverse to it, u_B slip velocity, u and v are the velocity components in the r and z directions respectively, T is the local temperature of the fluid. Further, ρ_{nf} is the effective density, μ_{nf} is the effective dynamic viscosity, $(\rho c_p)_{nf}$ is the heat capacitance, α_{nf} is the effective thermal diffusivity, and k_{nf} is the effective thermal conductivity of the nanofluid, which are defined as (see Ref. 21).

$$\rho_{nf} = (1 - \phi) \rho_f + \phi \rho_f, \quad \mu_{nf} = \frac{\mu_f}{(1 - \phi)^{2.5}},$$

$$(\rho c_p)_{nf} = (1 - \phi) (\rho c_p)_f + \phi (\rho c_p)_s, \quad \alpha_{nf} = \frac{k_{nf}}{(\rho c_p)_{nf}}, \quad (6)$$

Here ϕ is the solid nanoparticle volume fraction. Maxwell²² and further developed Hamilton and Crosser model²³ to take into account irregular particle geometries by introducing a shape factor. According to this model, when the thermal conductivity of the nanoparticles is 100 times larger than that of the base fluid, the thermal conductivity can be expressed as in Refs. 24.

$$k_{nf} = k_f \left(\frac{k_s + (m + 1) k_f - (m + 1) (k_f - k_s) \phi}{k_s + (m + 1) k_f + \phi (k_f - k_s)} \right), \quad (7)$$

According to them, the values of shape factor are given as in Table I.

We introduce the following non-dimensional variables:



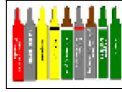
$$\bar{r} = \frac{r}{R_0}, \quad \bar{z} = \frac{z}{L_0}, \quad \bar{v} = \frac{L_0}{\delta U} v, \quad \bar{u} = \frac{u}{U}, \quad \bar{d} = \frac{d}{L_0}, \quad \bar{R} = \frac{R}{R_0},$$

$$M^2 = \frac{\sigma B_0^2 R_0^2}{\mu_f}, \quad G_r = \frac{g \alpha R_0^2 T_0 \rho_{nf}}{U \mu_f}, \quad \bar{\delta} = \frac{\delta}{R_0}, \quad \theta = \frac{T - T_0}{T_0}, \quad (8)$$

$$\bar{p} = \frac{U L_0 \mu}{R_0^2} p, \quad \beta = \frac{Q_0 R_0^2}{k_f T_0}, \quad \mu_{nf} = \frac{\mu_f}{(1 - \phi)^{2.5}}.$$

where U is the velocity averaged over the section of the tube with radius R_0 . Making use of these variables in eqs. (2)-(5) and applying the additional condition $\varepsilon = \frac{R_0}{L_0} = o(1)$ for the case of mild stenosis ($\frac{\delta}{R_0} \ll 1$), the non-dimensional governing equations after dropping the dashes can be

TABLE I. Nanoparticle shape with their shape factor.

Nanoparticles Type	Shape	Shape Factor
Bricks		3.7
Platelets		5.7
Cylinders		4.9

written as:

$$\frac{\partial p}{\partial r} = 0, \quad (9)$$

$$\frac{dp}{dz} = \frac{1}{(1-\varphi)^{2.5}} \frac{1}{r} \frac{\partial}{\partial r} \left(r \frac{\partial u}{\partial r} \right) - M^2 u + G_r \theta, \quad (10)$$

$$0 = \frac{1}{r} \frac{\partial}{\partial r} \left(r \frac{\partial \theta}{\partial r} \right) + \beta \left(\frac{k_s + (m+1) k_f + \phi (k_f - k_s)}{k_s + (m+1) k_f - (m+1) (k_f - k_s) \phi} \right) = 0, \quad (11)$$

where M , β and G_r are the Hartmann number, heat absorption parameter and Grashof number respectively. The non-dimensional boundary conditions on velocity and temperature for permeable wall are:

$$\frac{\partial u}{\partial r} = 0, \quad \frac{\partial \theta}{\partial r} = 0 \quad \text{at } r = 0, \quad (11a)$$

$$u = u_B, \quad \frac{\partial u}{\partial r} = \frac{\alpha}{\sqrt{D_a}} (u_B - u_{porous}), \quad \theta = 0 \quad \text{at } r = R(z). \quad (11b)$$

Where u_B is the slip velocity to be determined and u_{porous} is given as $u_{porous} = -D_a \frac{dp}{dz}$ and

$$R(z) = \begin{cases} 1 - 2\delta(z-d); & d < z \leq d + \frac{1}{2}, \\ 1 - \frac{\delta}{2} \left(1 + \cos 2\pi \left(z - d - \frac{1}{2} \right) \right); & d + \frac{1}{2} < z \leq d + 1, \\ 1; & \text{otherwise.} \end{cases} \quad (12)$$

EXACT SOLUTIONS

Solving eqs. (9)-(11) using undeterminant coefficient method (UCM) together with boundary conditions (11a), (11b), we get the exact solutions for velocity and temperature as follows:

$$\theta(r, z) = \left(\frac{R^2 - r^2}{4} \right) \left(\frac{k_s + (m+1) k_f + \phi (k_f - k_s)}{k_s + (m+1) k_f - (m+1) (k_f - k_s) \phi} \right) \beta. \quad (13)$$

$$u(r, z) = \frac{1}{4M^2(1-\varphi)^{\frac{5}{2}}} \left[\frac{(-4G_r\beta \frac{k_{nf}}{k_f} + M^2(1-\varphi)^{\frac{5}{2}} \left(-4\frac{dp}{dz} + G_r\beta \frac{k_{nf}}{k_f} (R^2 - r^2)\right) + 2(-2\alpha G_r\beta \frac{k_{nf}}{k_f} + M^2(1-\varphi) \left(-2\frac{dp}{dz}\alpha + G_r\beta \frac{k_{nf}}{k_f} \sqrt{D_a}\right) + 2M^4\frac{dp}{dz}\alpha D_a(1-\varphi)) I_0(M(1-\varphi)^{\frac{5}{2}}r)}{-\alpha I_0(M(1-\varphi)^{\frac{5}{2}}R) + M(1-\varphi)^{\frac{5}{2}}\sqrt{D_a}I_1(M(1-\varphi)^{\frac{5}{2}}R)} \right], \quad (14)$$

The flux Q can be calculated as:

$$Q = 2 \int_0^R rudr, \quad (15)$$

which implies

$$\frac{dp}{dz} = \frac{1}{8M^2(1-\varphi)^{\frac{5}{2}}R} \left[\frac{M(1-\varphi)^{\frac{5}{2}}\alpha \left(8M^4Q(1-\varphi)^{\frac{5}{2}} + G_r\frac{k_{nf}}{k_f}\beta R^2 \left(8 - M^2(1-\varphi)^{\frac{5}{2}}R^2\right)\right) I_0(M(1-\varphi)^{\frac{5}{2}}R)}{\left(-M(1-\varphi)^{\frac{5}{2}}R\alpha I_0(M(1-\varphi)^{\frac{5}{2}}R) + \left(M^2R(1-\varphi)^{\frac{5}{2}}\sqrt{D_a} + 2\alpha(1-M^2D_a)\right) I_1(M(1-\varphi)^{\frac{5}{2}}R)\right)} + \frac{\left(-16G_r\frac{k_{nf}}{k_f}\beta\alpha R + M^4(1-\varphi)^5 \left(G_r\frac{k_{nf}}{k_f}R^4\beta - 8M^2Q\right) \sqrt{D_a}\right) I_1(M(1-\varphi)^{\frac{5}{2}}R)}{\left(-M(1-\varphi)^{\frac{5}{2}}R\alpha I_0(M(1-\varphi)^{\frac{5}{2}}R) + \left(M^2R(1-\varphi)^{\frac{5}{2}}\sqrt{D_a} + 2\alpha(1-M^2D_a)\right) I_1(M(1-\varphi)^{\frac{5}{2}}R)\right)} \right]. \quad (16)$$

Impedance resistance λ is calculated as:

$$\lambda = \frac{\Delta p}{Q},$$

since the flow rate Q is constant for all sections of tube

$$\lambda = \frac{1}{Q} \int_0^L \left(-\frac{\partial p}{\partial z}\right) dz, \quad (17)$$

$$\lambda = \int_0^d F(z) dz + \int_d^{d+1/2} F(z) dz + \int_{d+1/2}^{d+1} F(z) dz + \int_{d+1}^L F(z) dz,$$

where

$$F(z) = -\frac{1}{Q} \frac{dp}{dz}.$$

RESULTS AND DISCUSSION

Here in this section we have presented graphical results with physical interpretation. The velocity profile $u(r,z)$ is plotted against the radial axis r for different values of the slip parameter α , in Fig. 2 for different shape particles. It can be clearly observed that the velocity profile is symmetric for all the parameters and it decreases as r approaches to zero. Velocity increases as r moves away from zero as shown in Fig. 2. When we increase slip parameter α then there will be more resistance between blood and arteries than blood flow slowly and velocity profile decreases see Fig.2. It is also noticed that velocity is high for Platelets type nanoparticles as compare to other type of nanoparticles.

The effects of varying parameter β and the stenosis height δ for the temperature profile θ are shown in Figs. 3(a), 3(b). It can be seen that temperature is maximum at $r=0$ Fig. 3(a) shows that the rise heat absorption parameter β definitely increases temperature rapidly and when we rise stenosis height, then the temperature declines. It is also noticed that the change in temperature for Platelets type nanoparticles is more rapid as compare to the other type of nanoparticles.

The wall shear stress τ has been plotted against the axial distance z and the stenosis height δ . It has been observed Fig. 4(a) – 4(c) that the wall shear stress τ increases with the stenosis height δ from $z=0$ to its peak value at $z=0.5$ and then decreases back to its minimum value at $z=1$. Also the wall shear stress increases for different values of the slip parameter α and the Darcy number D_a with rapid change for bricks type nanoparticles as compared to other type of nanoparticles.

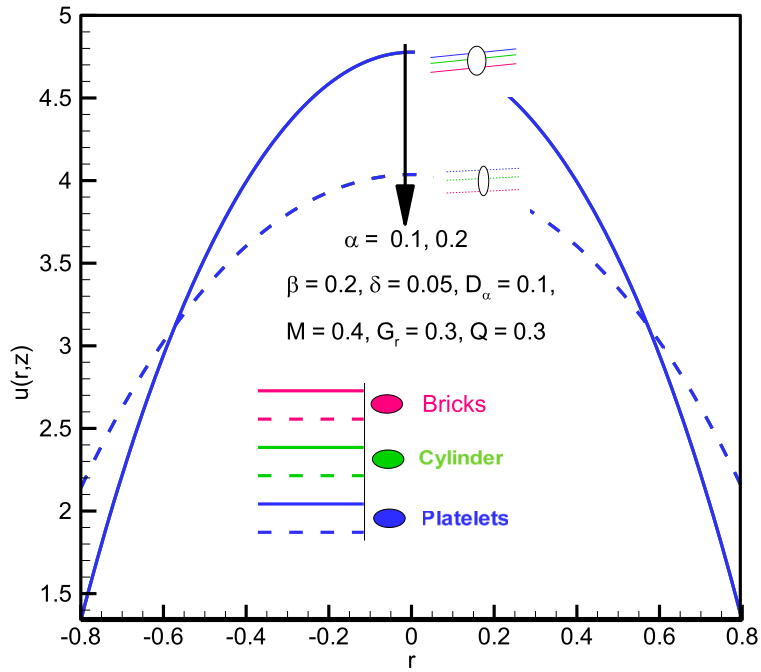


FIG. 2. Velocity profile against the radial axis for different values of α .

The impedance λ is plotted against the the slip parameter α and the Darcy number D_α for different values of the stenosis height δ in Figs. 5(a) and 5(b) It can be observed graphically that the impedance resistance is inversely proportional to both the Darcy number and the slip parameter for different values of stenosis height. Impedance resistance decreases with the increase in stenosis height. It is also noticed that the change in impedance resistance for platelets type nanoparticles is more rapid as compare to the other type of nanoparticles.

Streamlines have been plotted in Figs. 6(a)-6(c). It is observed that the number of trapped bolus increases for bricks shape nanoparticles as compared to the other shape of nanoparticles. But the size of bolus increases for the case of platelets shape of nanoparticles as compared to the bricks and cylinder shape particles.

The copper nanoparticles for the blood flow with water as base fluid with different nanosize particles is discussed. Key points of the performed analysis are as follows:

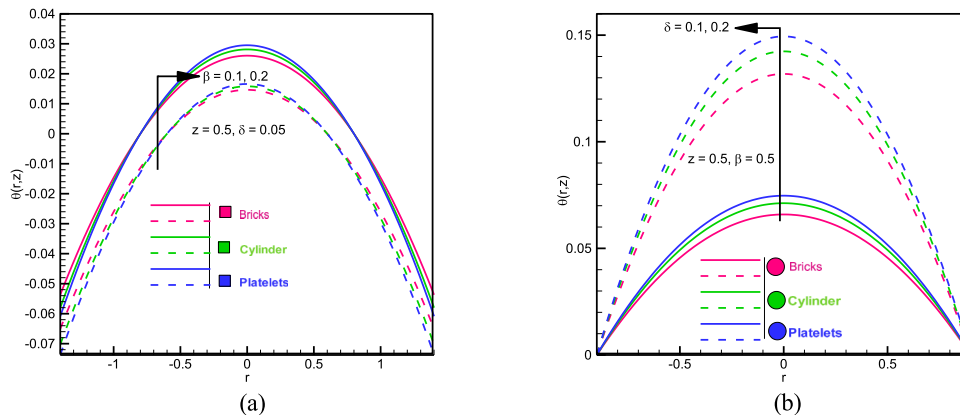


FIG. 3. Temperature profile for different values of (a) β and (b) δ .

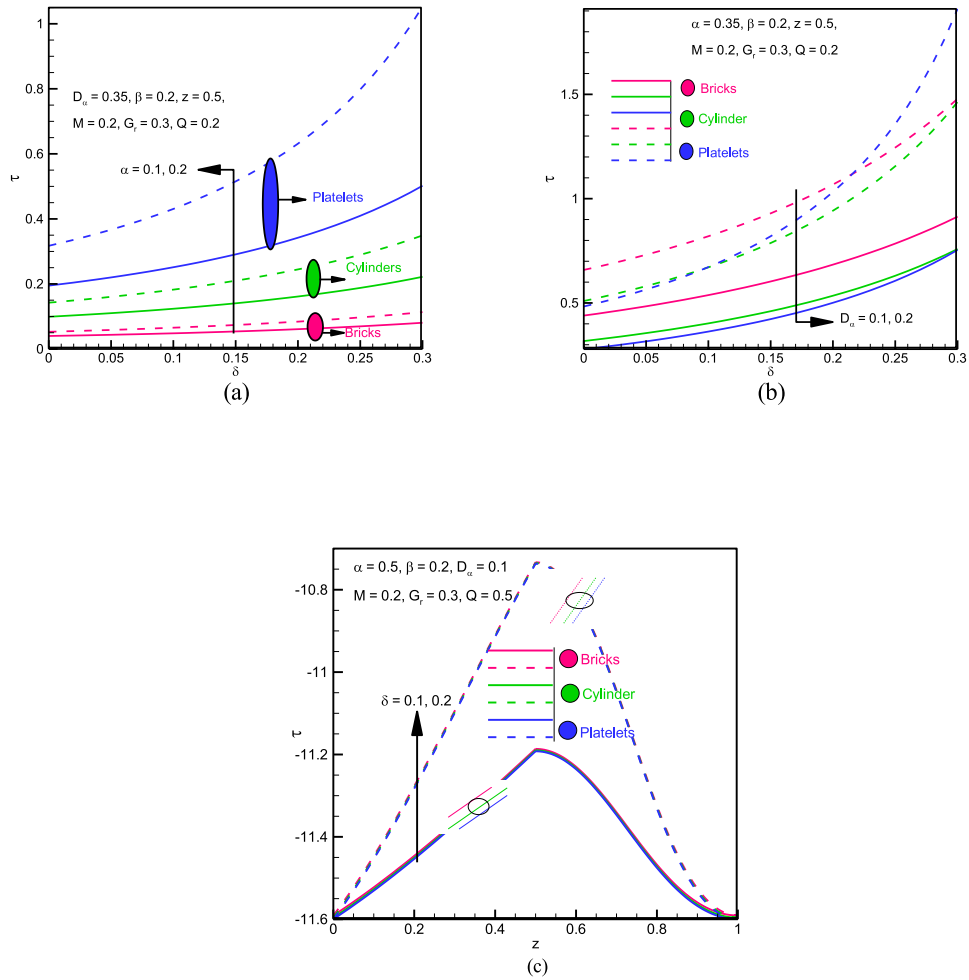


FIG. 4. Wall shear stress for different values of (a) α . (b) D_α and (c) δ .

1. It can be clearly observed that the velocity profile is symmetric for all the parameters and it decreases as r approaches to zero.
2. It is also noticed that velocity is high for Platelets type nanoparticles as compare to other type of nanoparticles.

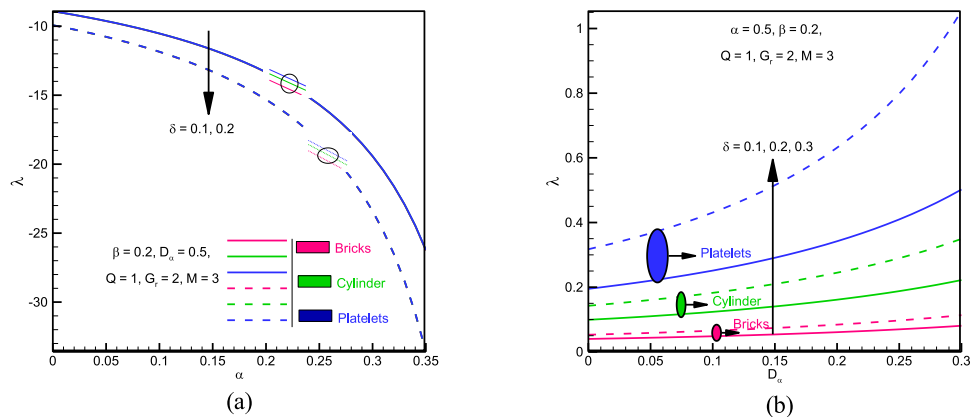


FIG. 5. Impedance resistance for different values of (a) δ with α and (b) δ with D_α .

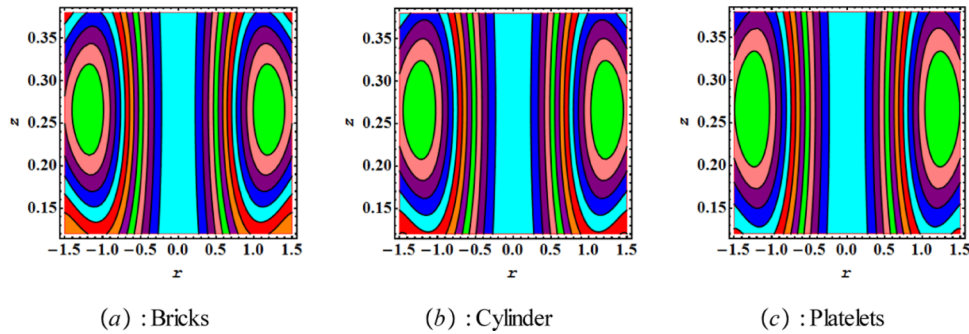


FIG. 6. Streamlines for different nanosize particles for $\alpha = 0.1$, $\beta = 0.2$, $D_\alpha = 0.3$, $Q = 0.5$, $M = 2$, $G_r = 2$.

3. It can be seen that the rise heat absorption parameter β definitely increases temperature rapidly and when we rise stenosis height, then the temperature declines.

4. It is also noticed that the change in temperature for Platelets type nanoparticles is more rapid as compare to the other type of nanoparticles.

5. The wall shear stress increases for different values of the slip parameter α and the Darcy number D_α with rapid change for bricks type nanoparticles as compared to other type of nanoparticles.

6. It can be observed graphically that the impedance resistance is inversely proportional to both the Darcy number and the slip parameter for different values of stenosis height. Impedance resistance decreases with the increase in stenosis height.

7. It is also noticed that the change in impedance resistance for platelets type nanoparticles is more rapid as compare to the other type of nanoparticles.

8. It is observed that the number of trapped bolus increases for bricks shape nanoparticles as compared to the other shape of nanoparticles. But the size of bolus increases for the case of platelets shape of nanoparticles as compared to the bricks and cylinder shape particles.

ACKNOWLEDGMENT

Authors are thankful to the Higher Education Commission Pakistan for the financial support to complete this work.

- ¹ S. Chakravarty and P. K. Mandal, "Mathematical modelling of blood flow through an overlapping arterial stenosis," *Math. Comp. Model.* **19**, 59-70 (1994).
- ² S. Chakravarty and P. K. Mandal, "A nonlinear two-dimensional model of blood flow in an overlapping arterial stenosis subjected to body acceleration," *Math. Comp. Model.* **24**, 43-58 (1996).
- ³ J. C. Mishra and S. Chakravarty, "Flow in arteries in the presence of stenosis," *J. Biomech.* **19**, 907-918 (1986).
- ⁴ D. S. Sankar and U Lee, "Two-fluid Herschel-Bulkley model for blood flow in catheterized arteries," *J. Mech. Sci. Tech.* **22**, 1008-1018 (2008).
- ⁵ D. Tripathi, "A Mathematical Study on Three Layered Oscillatory Blood Flow Through Stenosed Arteries," *J. Bio Eng.* **9**, 119-131 (2012).
- ⁶ Kh. Mekheimer and M. A El Kot, "Mathematical modelling of unsteady flow of a Sisko fluid through an anisotropically tapered elastic arteries with time-variant overlapping stenosis," *J. Appl. Math. Model.* **36**, 5393-5407 (2012).
- ⁷ S. Mishra, S.U. Siddiqui, and A. Medhavi, "Blood Flow through a Composite Stenosis in an Artery with Permeable Wall," *Int. J. Appl. Appl. Math.* **6**, 58-73 (2011).
- ⁸ Noreen Sher Akbar and Adil Wahid Butt, "Magnetic field effects for Copper suspended nanofluid venture through a composite stenosed arteries with permeable wall," *Journal of Magnetism and Magnetic Materials* **381**, 285-291 (2015).
- ⁹ P. Joshi, A. Pathak, and B. K. Joshi, "Two layered model of blood flow through composite stenosed artery," *Int. J. Appl. Appl. Math.* **4**(2), 343-354 (2009).
- ¹⁰ N. S. Akbar and S. Nadeem, "Mixed convective Magnetohydrodynamic peristaltic flow of a Jeffrey nanofluid with Newtonian heating," *Zeitschrift fur Naturforschung A.* **68a**, 433-441 (2013).
- ¹¹ A. M. Abd-Alla, S. M. Abo-Dahab, and R. D. Al-Simery, "Effect of rotation on peristaltic flow of a micropolar fluid through a porous medium with an external magnetic field," *J. Magnetism Mag. Mats.* **348**, 33-43 (2013).
- ¹² A. M. Abd-Alla, S. M. Abo-Dahab, and R. D. Al-Simery, "Effects of rotation and initial stress on peristaltic transport of fourth grade fluid with heat transfer and induced magnetic field," *J. Magnetism Mag. Mats.* **349**, 268-280 (2014).
- ¹³ J. Buongiorno, "Convective Transport in Nanofluids," *J. Heat Transfer* **128**(3), 240-250 (2010).

- ¹⁴ A. Ebaid, H. A. El-arabawy, and Y. Nader, "New exact solutions for boundary-layer flow of a nanofluid past a stretching sheet," *Int. J. Diff. Eq.* **10**(11), 2591-2594 (2013).
- ¹⁵ A. Ebaid, E. H. Aly, and N. Y. Abdelazem, "Analytical and numerical investigations for the flow and heat transfer of nanofluids over a stretching sheet with partial slip boundary condition," *J. Appl. Math. Inf. Sci.* **8**(4), 1639 (2014).
- ¹⁶ N.S. Akbar, "Metallic nanoparticles analysis for the peristaltic flow in an asymmetric channel with MHD," *IEEE TRANSACTIONS ON NANOTECHNOLOGY* **13**, 357-361 (2014).
- ¹⁷ K. Vajravelu, K.V. Prasad, J. Lee, C. Lee, I. Pop, and R. A. V. Gorder, "Convective heat transfer in the flow of viscous Ag-water and Cu-water nanofluids over a stretching surface," *Int. J. Thermal Sci.* **50**, 843 (2011).
- ¹⁸ M. Sheikholeslami, M. G. Bandpy, R. Ellahi, M. Hassan, and Soheil Soleimani, "Effects of MHD on Cu-water nanofluid flow and heat transfer by means of CVFEM," *J. Magnetism Mag. Mats.* **349**, 188-200 (2014).
- ¹⁹ W. Ibrahim, "O. D. Makinde: The effect of double stratification on boundary-layer flow and heat transfer of nanofluid over a vertical plate," *Computers & Fluids* **86**, 433-441 (2013).
- ²⁰ W. Ibrahim, "O.D.Makinde: Double-diffusive mixed convection and MHD Stagnation point flow of nanofluid over a stretching sheet," *Journal of Nanofluids* **4**, 1-10 (2015).
- ²¹ M. Sheikholeslami, Davood Domiri Ganji, M. Younus Javed, and R. Ellahi, "Effect of thermal radiation on magnetohydrodynamics nanofluid flow and heat transfer by means of two phase model," *Journal of Magnetism and Magnetic Materials* **374**, 36-43 (2015).
- ²² J. C. Maxwell, *A Treatise on Electricity and Magnetism* (Clarendon Press, Oxford, U. K, 1873), Vol. 1, pp. 360-366.
- ²³ R. L. Hamilton and O. K. Crosser, "Thermal conductivity of heterogeneous two-component system," *Industrial & Engineering Chemistry Fundamentals* **1**(1), 187-191 (1962).
- ²⁴ R. Ellahi, M. Hassan, and A. Zeeshan, "Shape effects of nanosize particles in Cu-H₂O nanofluid on entropy generation," *International Journal of Heat and Mass Transfer* **81**, 449-456 (2015).
- ²⁵ M. Kothandapani and J. Prakash, "Effects of thermal radiation parameter and magnetic field on the peristaltic motion of Williamson nanofluids in a tapered asymmetric channel," *Int. J. of Heat and Mass Transfer* **81**, 234-245 (2015).
- ²⁶ D. Tripathi and O. Anwar Bég, "A study on peristaltic flow of nanofluids: Application in drug delivery systems," *Int. J. of Heat and Mass Transfer* **70**, 61-70 (2014).
- ²⁷ H. Heidary, R. Hosseini, M. Pirmohammadi, and M. J. Kermania, "Numerical study of magnetic field effect on nano-fluid forced convection in a channel," *Journal of Magnetism and Magnetic Materials* **15**(374), 11-17 (2015).