



جامعة قطر
QATAR UNIVERSITY

FACT BOOK 2009-10

Office of Institutional Research
and Data Warehouse
Qatar University

CONTENTS

Acknowledgments	2
Preface	3
Qatar University	4
Vision and Mission	5
About Qatar University	6
History of Qatar University	7
Our Campus	8
Organization	9
Organization Chart	10
Organization Structure	12 - 13
Academic Programs	14
Abbreviations	15
Academic Programs Offered by Colleges	15 - 17
Accreditation Status for Selected Academic Programs	18 - 19
Students	20
Abbreviations	21
Registered Students by Gender, College, Academic level and Major	22
Registered Students by Country	23
Admission Statistics	25
Average Test Score for New Admitted Students by College	25
Scholarships by Type and College	26
Top 10 Bachelor Programs with Highest Number of Registered Students	27
Faculty and Staff	28
Faculty by Years of Work, Gender and Nationality	29
Faculty by Country	30
Faculty and Staff by Job	31
Graduates	32
Graduates by Gender, College, Academic Level and Major	33
Graduates by Country	34
Library	35
Library Collection	36
Library Collection (Books) by Dewey Decimal Classification and Issue Year	37
Library Staff	38
List of Database	39
Finance	40
Approved Budget (QR)	41
Budget by Cost Centre	42
Physical Facilities	43

ACKNOWLEDGMENTS

The task of compiling comprehensive facts about an institution as Qatar University is a group effort. No single office or division can hope to house all of the information needed to accomplish this task. Appreciation and many thanks go to the staff members from the Divisions of Institutional Planning and Development, Academic Affairs, Administration and Finance, Student Affairs, Research, and Colleges who provided valuable assistance in the preparation of this Fact Book. A special thanks goes to the office of External Relations, for their hard work and tireless efforts.



PREFACE

The 2009-2010 Fact Book is intended to provide the university community and others with a summary of institutional data about Qatar University. The Fact Book is a consolidation of institutional information gathered from various sources and is issued annually in October.

It contains many tables and graphs, which are found helpful by administrators, faculty, staff, students, and other constituents of the university. The Office of Institutional Research, in its ongoing effort to provide timely information and analysis, will continue refining this document each year. We hope you will review this document closely and use it on a continual basis. You may access the Fact Book online at <http://www.qu.edu/oipd>.

Please take the time to provide us with any feedback you may have concerning the Fact Book. This will give us the opportunity to deliver you improved products and services.

All comments regarding the Fact Book should be addressed at phone: 403-3670, email: vpipd@qu.edu.qa

Regards,

Jamir Chowdhury, EdD

Director

Institutional Research and Data Warehouse



QATAR UNIVERSITY



QATAR UNIVERSITY

Vision and Mission

Qatar University is an intellectual and scholarly community characterized by open discussion, the free exchange of ideas, respectful debate, and a commitment to rigorous inquiry.

All members of the University - faculty, staff, and students - are expected to advance the scholarly and social values embodied by the university.

Vision

Qatar University shall be a model national university in the region, recognized for high-quality education and research and for being a leader of economic and social development.

Mission

Qatar University is the national institution of higher education in Qatar. It provides high-quality undergraduate and graduate programs that prepare competent graduates, destined to shape the future of Qatar. The university community has diverse and committed faculty who teach and conduct research, which address relevant local and regional challenges, advance knowledge, and contribute actively to the needs and aspirations of society.



QATAR UNIVERSITY

About Qatar University

Since its inception in 1973, Qatar University has become the country's national and major institution of higher education. It is comprised of seven colleges: College of Arts and Sciences, College of Business and Economics, College of Education, College of Engineering, College of Law, College of Pharmacy, and College of Sharia and Islamic Studies.

Programs offered at the university attract professional recognition through their emphasis on close working links with business, industry, and other professions. At the same time, however, they emphasize the importance of a solid base of general skills and knowledge through a carefully designed Core Curriculum, which was conceived with an eye to the needs and requirements of Qatari society and its labor market. The University's teaching and research are innovative, collaborative, enterprising, and flexible endeavors, based on the intelligent use of emerging technologies.

In addition to its notable library, Qatar University boasts a number of support-for-learning centers and units, including an audio library, an e-library, advanced internet facilities, an educational-technology center, advanced video-conferencing facilities, and an active Office for Faculty and Instructional Development.



QU has always strived to fulfill its mission as the country's beacon of knowledge. With seven colleges, over 32,000 graduates, and a faculty community of almost 700 members, the University is also an active participant in several prestigious regional and international associations, including the Union of Arab Universities, the league of Islamic Universities, and the International Association of Universities, to name just a few.

Qatar University offers over 60 specializations (the widest range in the country), and boasts substantial research and academic infrastructure, as well as the reputation as a leading center for research in the country. As a result, QU has been successful in attracting a large number of distinguished scholars, researchers, and faculty members from other reputable institutions around the world.

QATAR UNIVERSITY

History of Qatar University

In 1973, having foreseen education as a principle contribution to its expanding society, the Emir of Qatar issued a decree proclaiming the establishment of Qatar's first national College of Education. Among a small population, the college admitted a respectable 57 male and 93 female students in its first year.

After several semesters, rapid development of the country made it necessary to expand upon the College of Education to accommodate new areas of specialization. In 1977, Qatar University was founded with four colleges: College of Education; College of Humanities and Social Sciences; College of Sharia, Law, and Islamic Studies; and the College of Science. By 1985, two additional colleges, the College of Engineering and College of Business and Economics, had been established.



QATAR UNIVERSITY



Our Campus

Qatar University is situated on the northern edge of Doha, approximately 16 kilometers from the city center. The location is excellent, and overlooks the coast, the Doha Golf Course and the West Bay Lagoon housing complex on the eastern side. In addition to the main campus, the University has an experimental farm located 65 km north of Doha.

QU's main campus is built on a total area of about 8 square kilometers, with architecture that is distinguished and modern, while reflecting the ideals of traditional Islamic design.

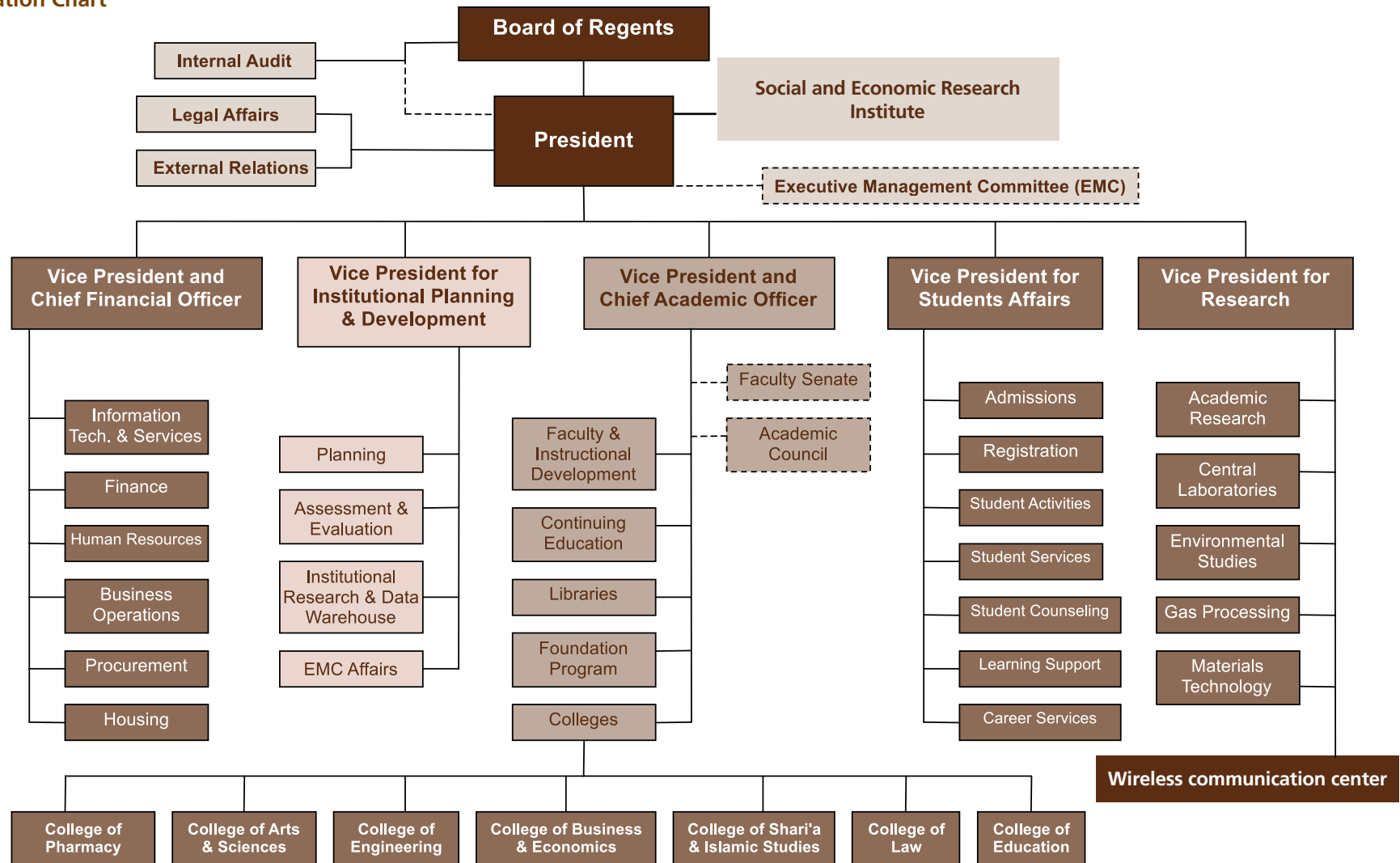
The campus is divided into two adjacent sections, for male and female students. Both the men's and women's campuses have their own lecture halls, laboratories, and learning-support facilities.

ORGANIZATION



ORGANIZATION

Organization Chart



ORGANIZATION

Board of Regents

The Board of Regents is the highest level of authority at Qatar University, overseeing all university policies and operations. The Board is responsible for approving the University's annual budget and any major changes in university policies, academic structures, degree programs, or administrative arrangements.

Board Members

H.H. Sheikh Tamim Bin Hamad Al Thani
Heir Apparent
Chairperson

H. E. Ahmed Bin Abdullah Al-Mahmoud
State Minister for Foreign Affairs,
Vice Chair of the Board of Regents

H. E. Saad Ibrahim Al-Mahmoud
Minister of Education and Higher Education,
Secretary General,
Supreme Education Council
Member

H.E. Sheikh Faisal Bin Qassim Al Thani
Chairman,
Qatari Businessmen Association
Member

H.E. Sheikh Hamad Bin jabor Bin Jassim Al Thani
Director of the General Secretariat for Development Planning
Member

Mr. Ahmad Mahdi Al Majed
Business Man
Member

Dr. Hessa Sultan Al-Jabir
General Secretary
ICT, Qatar
Member

Dr. Abdulla Bin Ali Al Thani
Educational Vice-President
Qatar Foundation
Chairman of Executive Committee

Mr. Hamad Rashid Al Mahanadi
G.M.
Ras Gas
Member

Dr. Peter Heath
Chancellor
American University of Sharjah

Dr. Roger Benjamin
President
Council for Aid to Education (CAE)

Prof. Sheikha Bint Abdulla Al Misnad
President Qatar University
Member

Prof. Abdel Aziz El Said El Bayoumi
Professor at Qatar University
Academic Advisor of the QU President
Secretary General

ORGANIZATION

Organization Structure

Office of President

* Office of Legal Affairs

* Office of Internal Audit

* External Relations Department

- Communication Section
 - Marketing Communication Unit
 - Websites Unit
- Media Section
- Alumni Relations Section
- Events and Hospitality Section
 - Hospitality Unit of External Relations
 - Events Unit
- Partner Relations Section

* Office of Vice President and Chief Financial Officer

- Finance Department
 - Revenue Accounting Section
 - Budgeting and MIS Section
 - General Accounting Section
 - Disbursements Section
 - Payroll Section
 - Projects, Contracts and Grants accounting Section
 - Business Support Section
- Human Resources Department
 - Employee Relations Section
 - Faculty Affairs Unit
 - Staff Affairs Unit
 - Immigration Unit
 - Scholarship Unit
 - Performance Management and Development Section
 - Personnel Recruitment Section
 - Salaries and Benefits Section

- Information Technology Services Department

- Office of Strategic Support (ITS)
- Office of IT Security, Policy and Documentation
- Infrastructure and Operations
 - Application and Database Administration Section
 - Networking and Telecommunication Section
 - Systems Administration Section
- Middleware and Integration Technologies
 - Portal and Web Services Section
 - Library Information System Section
 - Communication and Learning Technologies Section
- Enterprise Business Applications
 - Administrative Information Systems Section
 - Student Information System Section
- Academic Computing
 - Departmental Computing Support Section
 - Help Desk Section
 - Audio/Visual and Classroom Technologies Section

- Business Operations Department

- Business Operations Department Helpdesk
- Support Services
 - Housekeeping Section
 - Mail and Archive Section
 - Transportation Section
 - Delivery Services Section
- Quality Control Office
- Facility Operations
 - Maintenance Section
 - Electrical Unit
 - Mechanical Unit
 - Electro-Mechanical Section
 - Agriculture Section
 - Maintenance Store Section
 - Equipment Maintenance Section
- Projects Management Office

- Procurement Department

- Supplier Development and Management Section
- Construction Services and Equipment Section
- MRO Supplies and Services Section
- Books and Publications Section
- Central Store and Asset Tracking

- Housing Department

- Female Student Housing Section
- Male Student Housing Section
- Staff Housing Section

- Security and Safety Section

- Security Unit
- Safety Unit

- Health Clinic

ORGANIZATION

* Vice President for Institutional Planning and Development

- Planning
- Assessment and Evaluation
- Institutional Research and Data Warehouse
- EMC Affairs

* Office of Vice President and Chief Academic Officer

- Office of Faculty and Instructional Development
- Office of Continuing Education
- Library
 - Technical Services Section
 - Cataloging Unit
 - Collection Management Unit
 - Acquisition and Collection Development Unit
 - Library Management System
 - Library Public Services
 - Circulation and Reserves Unit
 - References and Instructional Services Unit
 - Media Management Unit
- Faculty Senate
- Foundation Program
- Core Curriculum Program
- Sport Science Program
- Colleges
 - College of Arts and Sciences
 - College of Business and Economics
 - College of Education
 - College of Engineering
 - College of Law
 - College of Pharmacy
 - College of Sharia and Islamic Studies

* Office of Vice President for Student Affairs

- Office of Student Information System
- Office of Admin and Finance Affairs
- Student Activities Department
 - Sports and Recreation Section
 - Annual Events and Special Projects Section
 - Students Development Section
 - Exchange Program Section

- Career Services Center
- Student Counseling Center
- Student Learning Support Center
 - Academic Advising Unit
- Students Services Department
 - Students Fund Section
 - Primary Services Section
 - Students with Special Needs Section
 - Textbooks Section
 - HelpDesk Section
 - International Students Section
- Admission Department
 - Admission Section
 - Scholarships Section
 - Transfers Section
 - Recruitment Section
- Registration Department
 - Registration Section
 - Scheduling Section
 - Records and Archiving Section

* Vice President for Research

- Central Laboratories Unit
- Environmental Studies Center
- Gas Processing Center
- Material Technology Unit
- Office of Academic Research
- Wireless Communication Center

* Office of Social and Economic Survey Research Institute

- Research Department
 - Technology Unit
 - Sampling Unit
 - Analysis Unit
 - Data Collection Unit

ACADEMIC PROGRAMS



ACADEMIC PROGRAMS

Academic Programs offered by Colleges

Abbreviations:

Degree Code	Degree Description	Degree Code	Degree Description
BA	Bachelor of Arts	DIP	Diploma
BBA	Bachelor of Business administration	MBA	Master of Business Administration
BED	Bachelor of Education	MED	Master of Education
LLB	Bachelor of Law	MS	Master of Science
BS	Bachelor of Science		

Academic Programs Offered by Colleges:

Degree	Major - Minor	Female	Male
College of Arts and Sciences			
BA	Arabic Language - Arabic Literature	√	
BA	English Language - International Affairs	√	
BA	English Language - Mass Communication	√	
BA	History - Geography	√	√
BA	History - Sociology	√	√
BA	International Affairs - English Language	√	√
BA	International Affairs - Mass Communication	√	√
BA	International Affairs	√	√
BA	Mass Communication - Arabic Language	√	√
BA	Mass Communication - English Language	√	√
BA	Mass Communication - International Affairs	√	√
BA	Social Work	√	

Degree	Major - Minor	Female	Male
BA	Sociology - Geography	√	
BS	Biology - Chemistry	√	
BS	Biomedical	√	
BS	Chemistry - Biology	√	
BS	Chemistry - Food Sciences and Nutrition	√	
BS	Chemistry - Geology		√
BS	Chemistry - Marine Sciences	√	√
BS	Environmental Sciences - Biotechnology	√	√
BS	Environmental Sciences - Marine Science	√	√
BS	Nutrition	√	
BS	Statistics - Computer Science	√	

ACADEMIC PROGRAMS

Academic Programs offered by Colleges

Degree	Major - Minor	Female	Male
College of Business and Economics			
BBA	Accounting - Economics	√	
BBA	Accounting - Finance	√	√
BBA	Accounting - International Business	√	√
BBA	Accounting - Management	√	√
BBA	Accounting - Management Information Systems	√	
BBA	Accounting - Marketing	√	√
BBA	Accounting	√	√
BBA	Finance - Accounting	√	√
BBA	Finance - Economics	√	
BBA	Finance - International Business	√	√
BBA	Finance - Management	√	√
BBA	Finance - Management Information Systems	√	
BBA	Finance - Marketing	√	√
BBA	Finance	√	√

Degree	Major - Minor	Female	Male
BBA	Management - Accounting	√	√
BBA	Management - Economics	√	
BBA	Management - Finance	√	√
BBA	Management - International Business	√	√
BBA	Management - Management Information Systems	√	
BBA	Management - Marketing	√	√
BBA	Management	√	√
BBA	Marketing - Accounting	√	√
BBA	Marketing - Economics	√	
BBA	Marketing - Finance	√	√
BBA	Marketing - International Business	√	√
BBA	Marketing - Management	√	√
BBA	Marketing - Management Information Systems	√	
BBA	Marketing	√	√
MBA	Business Administration	√	√

ACADEMIC PROGRAMS

Academic Programs offered by Colleges

Degree	Major - Minor	Female	Male
College of Education			
BED	Primary Education	√	
DIP	Early Childhood	√	
DIP	Primary Education	√	
DIP	Secondary Education	√	√
DIP	Special Education	√	√
MED	Education Leadership	√	√
MED	Special Education	√	√

Degree	Major - Minor	Female	Male
College of Law			
LLB	Law	√	√

Degree	Major - Minor	Female	Male
College of Pharmacy			
BS	Pharmacy	√	

Degree	Major - Minor	Female	Male
College of Engineering			
BS	Computer Science	√	√
BS	Architecture	√	
BS	Chemical Engineering	√	√
BS	Civil Engineering		√
BS	Computer Engineering	√	
BS	Electrical Engineering	√	√
BS	Industrial and System Engineering	√	
BS	Mechanical Engineering		√
MS	Computing	√	√

Degree	Major - Minor	Female	Male
Sport Science Program			
BS	Sport Science	√	√

Degree	Major - Minor	Female	Male
College of Sharia and Islamic Studies			
BA	Origin of Religion - Sharia	√	√
BA	Sharia - Origin of Religion	√	√
BA	Dawa - Mass Communication	√	√

ACADEMIC PROGRAMS



Accreditation Status for Selected Academic Programs

Agency	Agency Description
AACSB	The Association to Advance Collegiate Schools of Business
ABA	American Bar Association
ABET, Inc	Accreditation Board for Engineering and Technology, Inc
ACEJMC	Accrediting Council on Education in Journalism and Mass Communication
ADA	American Dietetic Association
CCAPP	Canadian Council for Accreditation of Pharmacy Program
CEA	Commission on English Language Accreditation
CQAIE	Center for Quality Assurance in International Education
CSC	Canadian Society for Chemistry
CSWE	Council on Social Work Education
NAACLS	National Accrediting Agency for Clinical Laboratory Sciences
RSS	Royal Statistical Society

ACADEMIC PROGRAMS

Accreditation Status for Selected Academic Programs

	Agency	Accreditation Status and Date
College of Arts and Sciences		
Mass Communication	ACEJMC	Spring 2014
Biomedical Sciences	NAACLS	Fully Accredited - 9/1/2008
Statistics	RSS	Spring 2011
Human Nutrition	ADA	Fall 2011
Chemistry	CSC	Fully Accredited - Spring 2009
Social Work	CSWE	No Accreditation offered outside US. However program is applying CSWE Standards
College of Engineering		
Electrical Engineering	ABET, Inc.	Substantially Equivalent accreditation status effective as of October 1, 2005 / Full accreditation status in Fall 2011 (accreditation visit in Fall 2010)
Chemical Engineering (Male Students)		
Mechanical Engineering		
Civil Engineering		
Industrial Engineering	ABET, Inc.	Full accreditation status in Fall 2011 (accreditation visit in Fall 2010)
Computer Engineering		
Computer Science		
College of Education		
All programs under the college	CQAIE	Fall 2010
College of Business and Economics		
Accreditation at the College not at the program level.	AACSB	Fall 2009
College of Law		
Law	ABA	No accreditation offered outside US. However program is applying ABA Standards.
College of Pharmacy		
Pharmacy	CCAPP	February 2009 (Provisional Accreditation) / (Full Accreditation) Spring 2011
Foundation Program		
English Program	CEA	Apr - 2010

STUDENTS



STUDENTS

Abbreviations

College Code	College Description
--------------	---------------------

AS	Arts and Sciences
BU	Business and Economics
ED	Education
EN	Engineering
FP	Foundation Program
LW	Law
RX	Pharmacy
SI	Sharia and Islamic Studies
00	No College

Test Code	Test Description
-----------	------------------

MPT	Mathematics Placement Test
IBT	TOEFL Internet-based Test
SAT	Scholastic Aptitude Test-SAT
ACT	American College Testing-ACT
IC3	IC3 Computing

Level Code	Level Description
------------	-------------------

UG	Undergraduate
MA	Master
DP	Diploma
CR	Certificate
FN	Foundation



STUDENTS

Registered students by Gender, College, Academic Level and Major

	M	F		M	F		M	F
AS	220	1950	ED	72	303	BU	373	919
UG	192	1934	UG	47	208	UG	322	869
Arabic Language	-	360	Art Education	-	119	Accounting	38	63
Biology	-	30	Chemistry	-	1	Business Administration	1	1
Biomedical Sciences	-	54	Early Childhood	-	1	Finance	37	104
Chemistry	9	30	Physical Education	47	79	General Business	223	620
English Language	-	225	Primary Education in Arabic Studies	-	1	Management	17	53
Environmental Sciences	3	21	Primary Education in English	-	6	Marketing	6	28
Food Science & Nutr-Nutrition	-	6	Primary Education in Math & Science	-	1	MA		
General Arts	12	64	DP	18	31	Business Administration	51	50
General Science	12	37	Primary Education	-	11	SI	86	289
Geography-Urban Planning	32	132	Early Childhood	-	1	UG	86	289
History	54	391	Secondary Education	11	9	Dawa	-	22
Human Nutrition	-	62	Special Education	4	8	General Sharia	4	18
Information-Library Science	1	17	Special Education	3	2	Islamic Studies	-	1
International Affairs	26	142	MA	7	26	Origin of Religion	13	141
Mass Communication	28	176	Education Leadership-Master	4	24	Sharia	69	107
Mathematics	-	8	Special Education	3	2	FP	813	2275
Physics	-	1	CR	0	38	FN	813	2275
Pre-Biomedical	-	44	Teacher Assistant	-	38	Foundation-Art	112	919
Social Work	-	16	EN	470	603	Foundation-Business and Economics	269	462
Sociology	-	77	UG	464	593	Foundation-Education	-	27
Statistics	15	41	Architectural Engineering	-	61	Foundation-Engineering	247	220
CR	28	16	Architecture	-	21	Foundation-Law	67	145
Arabic Language (Non-Speaker)	28	16	Chemical Engineering	71	78	Foundation-Pharmacy	-	94
LW	55	157	Civil Engineering	119	-	Foundation-Science	80	279
UG	55	157	Computer Engineering	-	120	Foundation-Sharia	22	119
Law	53	149	Computer Science	48	98	Foundation Sport Science	16	10
Law and Sharia	2	8	Electrical Engineering	90	27	OO	1	10
RX	0	110	General Engineering	45	73	CR	1	10
UG	0	110	Industrial and Systems Engineering	-	115	Special Courses	-	7
General Pharmacy	-	57	Mechanical Engineering	91	-	Undeclared	1	3
Pharmacy	-	53	MA	6	10	Total	2090	6616
			Computing	6	10			

STUDENTS

Registered Students by Country

Africa	771
Algeria	40
Burkina Faso	4
Cameroon	1
Chad	5
Comoros	9
Djibouti	8
Egypt	298
Eritrea	11
Ethiopia	6
Ghana	5
Kenya	3
Libya	12
Mali	2
Mauritania	32
Morocco	8
Nigeria	8
Senegal	1
Sierra Leone	1
Somalia	56
Sudan	215
Tanzania	4
Tunisia	42
North America	47
Canada	18
United States	29
South America	1
Brazil	1

Asia	7845
Afghanistan	2
Bahrain	120
Bangladesh	46
China	2
Cyprus	2
India	41
Indonesia	4
Iran	214
Iraq	100
Japan	2
Jordan	406
Korea (South) (Republic)	5
Kuwait	17
Laos	1
Lebanon	43
Malaysia	2
Nepal	3
Oman	186
Pakistan	67
Palestine	505
Philippines	7
Qatar	5376
Qatari Travel Document	42
Russian Federation	1
Saudi Arabia	138
Sri Lanka	2
Syria	152
Thailand	4
Turkey	6
United Arab Emirates	29
Vietnam	1
Yemen	319

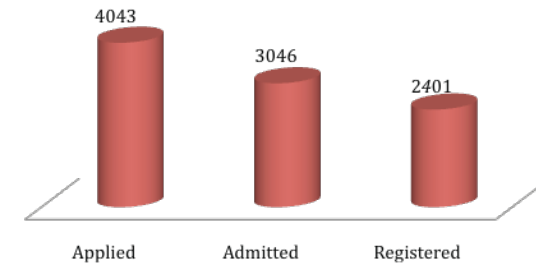
Europe	40
Belgium	1
Bosnia and Herzegovina	10
Croatia (Hrvatska)	2
Denmark	1
Germany	2
Ireland	3
Italy	1
Macedonia	1
Poland	3
Romania	1
Spain	1
Ukraine	3
United Kingdom	9
Yugoslavia	1
Slovenia	1
Oceania	2
Australia	1
New Zealand	1
Total	8706



STUDENTS

Admission Statistics

	Qatari		Non - Qatari		Total
	M	F	M	F	
Applied	610	1533	801	1099	4043
Admitted	511	1232	514	789	3046
% of Admitted from Applied	84%	80%	64%	72%	75%
Registered from Admitted	308	1087	386	620	2401
% of Registered from Admitted	60%	88%	75%	79%	79%



Average Test Score for New Admitted Student by College

	TOEFL		ACT		IC3		MPT		IBT		CBT		SAT	
	#	Score	#	Score	#	Score	#	Score	#	Score	#	Score	#	Score
AS	4	266.8	4	23.3	7	2475.9	-	-	4	83.5	-	-	3	566.7
BU	20	499.6	17	22.6	22	2331.2	-	-	5	86.0	-	-	4	550.0
ED	20	422.7	-	-	1	401.0	4	112.5	-	-	-	-	-	-
EN	11	529.6	15	24.9	34	2337.9	-	-	10	90.7	-	-	18	603.9
FP	87	440.1	251	19.3	324	1686.7	4	116.25	49	76.3	1	220	25	535.2
LW	1	450.0	2	10.0	2	2589.0	-	-	1	108.0	-	-	1	570.0
RX	2	573.5	7	24.3	9	2348.2	-	-	3	89.3	-	-	3	606.7
00	-	-	1	23.0	-	-	-	-	-	-	-	-	-	-

Number of Students who took the test

STUDENTS

Scholarships by Type and College

Scholarship type	AS	BU	ED	EN	FP	LW	RX	SI	Total
Amiri Academic Excellence	-	-	1	5	10	-	1	-	17
Amiri Diwan	1	1	-	4	16	-	7	1	30
Distinction Performance	4	6	1	8	-	-	-	2	21
GCC Embassies	2	-	-	1	26	-	-	-	29
GCC Qatari Certificate	1	1	1	2	50	-	-	4	59
GCC Qatari Husband	2	-	-	-	10	-	-	4	16
GCC Qatari Mother	-	-	-	-	1	-	-	-	1
Islamic World Citizens	10	10	1	12	25	1	3	5	67
Islamic World Embassies	5	1	-	-	40	1	5	2	54
Qatar Inhabitants	-	-	-	-	5	-	-	-	5
Qatar University Staff	-	-	-	3	12	-	-	-	15
Qatari Mother Children	2	1	-	-	27	-	1	1	32
Short Scholarships	44	-	-	-	-	-	-	-	44
Total	71	20	4	35	222	2	17	19	390

STUDENTS

Top 10 Bachelor Programs with Highest Number of Registered Students

Male Campus	Total	%
1 - Civil Engineering	119	10%
2 - Mechanical Engineering	91	8%
3 - Electrical Engineering	90	8%
4 - Chemical Engineering	71	6%
5 - Sharia	69	6%
6 - History	54	5%
7 - Law	53	5%
8 - Computer Science	48	4%
9 - Physical Education	47	4%
10 - Accounting	38	3%

Female Campus	Total	%
1 - History	391	9%
2 - Arabic Language	360	9%
3 - English Language	225	5%
4 - Mass Communication	176	4%
5 - Law	149	4%
6 - International Affairs	142	3%
7 - Origin of Religion	141	3%
8 - Geography-Urban Planning	132	3%
9 - Computer Engineering	120	3%
10 - Art Education	119	3%

FACULTY AND STAFF



FACULTY AND STAFF

Faculty by Years of Work, Gender and Nationality

Years of work	Qatari		Non Qatari		Total
	M	F	M	F	
< = 5	10	16	240	108	374
6 to 10	8	23	50	22	103
11 to 15	10	17	17	2	46
16 to 20	17	13	8	3	41
> 20	38	50	1	0	89
Total	83	119	316	135	653



FACULTY AND STAFF

Faculty by Country

Africa	112
Algeria	9
Egypt	63
Libya	2
Mauritania	1
Morocco	4
Senegal	1
Sudan	17
Tunisia	14
Zimbabwe	1
North America	146
America	93
Canada	53
South America	2
Colombia	1
Brazil	1

Asia	337
Bangladesh	4
India	22
Iran	5
Iraq	14
Japan	1
Jordan	36
Lebanon	8
Malaysia	4
Maldives	1
Myanmar	1
Pakistan	4
Palestine	6
Philippine	1
Qatar	202
Russia	1
Saudi Arabia	1
South Korea	1
Sri Lanka	1
Syria	13
Turkey	7
Yemen	4

Europe	39
Austrian	1
Bosnia	1
Bulgaria	2
Czech	1
Finland	1
French	2
German	1
Poland	1
Ireland	1
Norway	1
Sweden	2
United Kingdom	25
Oceania	17
Australian	14
New Zealand	3
Total	653

FACULTY AND STAFF

Faculty and Staff by Job

Teaching Staff		Staff							
653		859							
Professor	52	Academic position	24	Administration Coordinator	9	Editor	3	Officer	1
Associate Professor	120	Acting	1	Administrative Assistant	109	Engineer	21	Operator	3
Assistant Professor	161	Analyst	1	Administrator	3	Executive Assistant	10	Researcher	7
Lecturer	223	Assistant Dean	1	Analyst	7	Executive Staff	6	Section Head	42
Teaching Assistant	97	Consultant	1	Application Consultant	6	General Service	43	Specialist	108
Administrators	75	Manager	1	Arts Staff	4	IT	26	Sports Specialist	4
President	1	Researcher	16	Auditor	1	Labor	29	Sports Therapists	1
Vice President	5	Section Head	2	Clerk	22	Legal	1	Store Custodian	9
Director	27	Unit Head	1	Consultant	2	Librarian	29	Supervisor	18
Dean	7	Non Academic	835	Coordinator	144	Manager	6	Technician	91
Associate Dean	9	Accountant	23	Counselor	4	Medical	10	Unit Head	13
Department Head	26	Acting	5	Creative Staff	8	Oceanographer	1	Vessel Staff	6

GRADUATES



فبارك لكم لخير يومنا

المختار
جنتك

لأفعم
2010



GRADUATES

Graduates by Gender, College, Academic Level and Major

	M	F		M	F
AS	40	342	ED	37	87
UG	40	342	UG	24	63
Arabic Language	-	53	Art Education	-	29
Biology	-	9	Physical Education	24	34
Biomedical Sciences	-	24	DP	7	8
Chemistry	-	13	Secondary Education	4	6
English Language	-	31	Special Education	3	2
Geography-Urban Planning	9	44	MA	6	16
History	16	56	Education Leadership	3	14
Human Nutrition	-	15	Special Education	3	2
Information-Library Science	-	16	EN	70	87
International Affairs	4	21	UG	70	87
Mass Communication	6	16	Architectural Engineering	-	13
Mathematics	-	6	Chemical Engineering	11	9
Physics	-	1	Civil Engineering	19	-
Sociology	-	29	Computer Engineering	-	20
Statistics	5	8	Computer Science	15	26
BU	64	120	Electrical Engineering	13	-
UG	44	108	Industrial and Systems Eng.	-	19
Accounting	16	36	Mechanical Engineering	12	-
Business Administration	1	-	LW	4	14
Finance	22	40	UG	4	14
Management	4	20	Law	3	7
Marketing	1	12	Law and Sharia	1	7
MA	20	12	SI	32	68
Business Administration	20	12	UG	32	68
			Origin of Religion	3	49
			Sharia	29	19
			Total	247	718

GRADUATES

Graduates by Country

Africa	44	Asia	914	Europe	3
Algeria	2	Bahrain	10	Bosnia and Herzegovina	1
Burkina Faso	1	Bangladesh	1	Croatia (Hrvatska)	1
Egypt	20	India	7	United Kingdom	1
Eritrea	1	Iran	20		
Ghana	1	Iraq	15	North America	4
Mauritania	8	Jordan	54	Canada	2
Nigeria	2	Korea (South) (Republic)	1	United States	2
Somalia	2	Kuwait	3		
Sudan	6	Lebanon	8	Total	965
Tunisia	1	Nepal	1		
		Oman	34		
		Pakistan	9		
		Palestine	59		
		Qatar	637		
		Qatari Travel Document	11		
		Saudi Arabia	11		
		Syria	10		
		United Arab Emirates	1		
		Yemen	22		

LIBRARY



LIBRARY

Library Collection

Description	Number of Title	Number of Copy (Volume)
Arabic Collection (Books, References, Thesis-book)	65000	130000
English Collection (Books, References, Thesis-book)	75000	150000
Arabic Periodicals	574	-
English Periodicals	2380	-
English Microfiche	5000	-
Arabic Microfiche	300	-
Manuscript - Microfiche	2016	-
Microfilm	500	-
CDs + DVDs +Videos (VHS)	400	-
e-Resources Subscription (Database)	38	-
Qatari Collection ⁽¹⁾	396	-
Original Manuscript ⁽²⁾	13	-
Special Collection ⁽³⁾	720	-
Rare Periodicals ⁽⁴⁾	53	-
English Newspapers (Archived) ⁽⁵⁾	-	250
Arabic Newspapers (Archived) ⁽⁶⁾	-	503

(1) A collection of photos, publications, productions about Qatar.

(2) Thirteen rare Manuscripts, which have been donated to Qatar University.

(3) A rare collection of first-edition references on various topics.

(4) QU Library preserves a number of old periodicals in addition to those ones that are no longer in-print

(5) Each volume has 30-issues (1980 – 2008: Gulf Time, Peninsula newspaper, Qatar Tribune)

(6) Each volume has 90-issues (1980 - 2005: Raya, Al-sharq, Al-Watan, Al-arab)



LIBRARY

Library Collection (Books) by Dewey Decimal Classification and Issue Year

		2005-2010	2004-2000	1999-1995	1994-1990	1989-1985	1984-1970	1969 and less	Total
Generalities (000-099)	EN	192	653	727	708	608	1713	209	4810
	AR	28	244	287	171	356	473	96	1655
Philosophy (100-199)	EN	57	112	164	133	244	923	320	1953
	AR	24	64	144	181	450	852	242	1957
Religion (200-299)	EN	50	76	39	50	44	390	196	845
	AR	80	117	500	620	1652	2905	1230	7104
Social Science (300-399)	EN	821	1617	1420	1055	1650	5735	1305	13603
	AR	501	1123	1190	1255	2575	3930	935	11509
Language (400-499)	EN	20	153	120	210	290	815	304	1912
	AR	25	18	93	112	420	640	233	1541
Science and Math (500-599)	EN	82	385	710	955	2000	5950	1900	11982
	AR	21	90	243	195	490	910	366	2315
Applied Science (600-699)	EN	495	1270	1094	1330	2265	5260	986	12700
	AR	94	300	656	545	1215	1386	533	4729
Arts (700-799)	EN	30	120	120	90	265	1300	353	2278
	AR	25	90	160	165	324	501	180	1445
Literature (800-899)	EN	139	208	146	186	362	2171	1168	4380
	AR	95	56	309	454	1676	3498	1401	7489
History and Geography (900-999)	EN	63	178	124	120	262	2070	875	3692
	AR	65	102	305	429	1189	2750	1447	6287
Total									104186

EN: English

AR: Arabic

LIBRARY

Library Staff

Position	Number of Staff
Acquisition Librarian	1
Assistant Librarian	7
Cataloging Librarian	1
Circulation Assistant	3
Circulation Clerk	1
Finance and Administration Coordinator	1
Librarian	5
Library Clerk	8
Reference Librarian	9
Senior Librarian	3
Total	39



LIBRARY

List of Database

Database Description	Database Description
ACM Digital Library	MathSciNet
Britannica Encyclopedia	Micromedex Healthcare Series
British Library Inside	OCLC - Web Dewey
eBrary	Oxford Islamic Studies
EBSCO Host : Legal collection	Oxford Reference Online
EBSCO Host : SportDiscuss	Oxford Scholarship Online: Business and Management
EBSCO Host: ASC	Oxford Scholarship Online: Economics
EBSCO Host: BSC	Oxford Scholarship Online: Linguistics
Emerald Mgmt Plus including Engineering and Back files	Oxford Scholarship Online: Literature
IEEE ASPP	Oxford Scholarship Online: Political Science
IEEE POP AL	PatBase + PatentOrder
JSTOR: Arts and Sciences I Collection	ProQuest 5000
JSTOR: Arts and Sciences II Collection	ProQuest Digital Dissertations Full Text
JSTOR: Arts and Sciences VII Collection	ScienceDirect
JSTOR: Business Collection	SCOPUS
JSTOR: Business II Collection	Sociological Abstracts with Full Text
LexisNexis	STAT!Ref
LION	Web of Science
LOC (Library of Congress)	WestLaw International

FINANCE

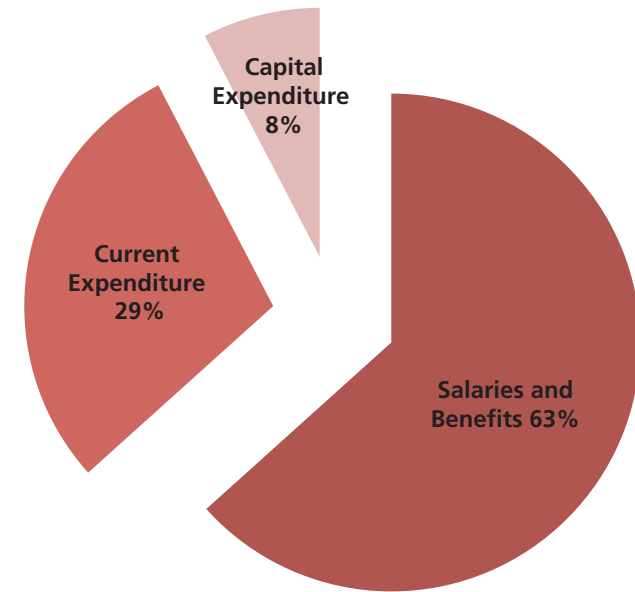


FINANCE

Approved Budget (QR)

Salaries and Benefits (First Chapter)	423,232,650
Current Expenditure (Second Chapter)	194,000,000
Capital Expenditure (Third Chapter)	51,000,000
Total	668,232,650

Approved Budget (QR)



FINANCE

Budget by Cost Centre

	2nd and 3rd Chapter
Board of Regents	1,000
Office of the President	442,034
The Social and Economic Survey Research	3,760,000
Office of External Relations	2,281,538
Office of the VP and Chief Financial Officer	48,658
Finance	14,978,568
Information Technology Services	24,868,659
Procurement	270,700
Human Resources	6,630,954
Business Operations	48,234,561
Health clinic	345,373
Housing	9,657,973
Office of VP for Institutional Planning and Development	4,867,740
Assessment and Evaluation	6,000
Office of Legal Affairs	57,000
Office of the VP and Chief Academic Officer	1,706,264
Office of Faculty and Instructional Development	188,778
Office of Continuing Education	210,241

	2nd and 3rd Chapter
Office of the Library	13,679,532
College of Arts and Sciences	18,297,662
College of Business and Economics	2,188,100
College of Education	2,128,608
College of Engineering	10,506,405
College of Law	950,098
College of Pharmacy	2,552,478
College of Sharia and Islamic Studies	759,392
Foundation Program	3,851,118
Core Curriculum Committee	165,807
Office of the VP for Student Affairs	16,466,591
Office of the VP for Research	7,047,055
Office of Academic Research	1,834,632
Central Laboratories	1,960,700
Environmental Studies	43,124,283
Gas Processing	241,500
Material Technology	690,000

PHYSICAL FACILITIES



MAJOR CAMPUS BUILDINGS

Food Court

Located in the women's section, in front of the College of Engineering Building. It has been in use since March 2009. It is used for fast food and cafeteria service function as well as for light entertainment activity. It houses different types of fast food facilities, soft drinks, coffee shop and cafeterias. It has a bookstore, bank, Internet Café and some administrative offices.

Women's Engineering College

Located in the women's section behind the Women's Activities Building. It has been in use since January 2009. It is used for learning functions, and some student activities. It houses lecture rooms, labs, auditoriums, faculty member offices, meeting rooms, and security.

Men's Engineering College

Located at the men's section in the middle of Qatar University Campus. It has been in use since 1984. It starts from section F through section J. It is used for learning functions and some student activities. It houses lecture rooms, labs, auditoriums, faculty member offices, meeting rooms and some food services.

Men's Engineering Workshop Building

Located in the men's section at the end of the College of Engineering. It has been in use since 1984. It is used for learning and facility functions. It houses offices.

Men's Engineering Annex Building

Located in the men's section beside the College of Engineering. It has been in use since 1984. It is used for learning and administrative functions. It houses computer labs and offices.

Men's College of Arts and Science

Located in the men's section at the middle of Qatar University Campus. It has been in use since 1984. It starts from section A through section E. It is used for learning functions and some student activities. It houses lecture rooms, labs, auditoriums, faculty member offices, meeting rooms and some food services.

Women's College of Arts and Science

Located in the women's section. It has been in use since 2000. It is divided into 6 sections (starting from section A through section F), each section serving a respective branch of under the college. It is used for learning functions and some student activities. It houses lecture rooms, labs, faculty member offices, meeting rooms and some food services.

Business Operations Department (BOD)

Located in the women's section near the Men's College of Engineering. It has been in use since 1984. It operates most of the systems in the University, so it is therefore used for administrative and technical functions. It houses staff offices, labs, port cabins, meeting rooms, workshop, and security rooms.

Information Technology Services (ITS)

Located in the men's section besides the Administration building. It has been in use since 1986, and collaborates with the Qatar University community to provide advanced information products and services, and enables the University to uphold its high standards in teaching, learning and outreach. It delivers world class IT services to enable Qatar University to be a model national university that offers a high quality, learning-centered education. It houses IT equipment, staff offices and meeting rooms.

MAJOR CAMPUS BUILDINGS

Administration Building

Located in the men's section at the main road. It has been in use since 1984. It is used for administrative functions and instructions. It houses offices and meeting rooms.

Educational Technology Building

Located in men's section, in front of the Men's College of Arts and Sciences. It has been in use since 1984. It is used for learning functions, and some student activities. It houses lecture rooms, labs, faculty member offices, meeting rooms and some food services.

Main Men's Building

Located at men's section beside the College of Arts and Sciences (Men). It has been in use since 1984. It is used for learning functions, and some student activities. It houses lecture rooms, labs, faculty member offices, meeting rooms and some food services.

Main Women's Building

Located in the women's section besides the Men's College of Arts and Sciences. It has been in use since 1984. It is used for learning functions, and some student activities. It houses lecture rooms, labs, faculty member offices, meeting rooms, some food services.

Men's Foundation Building

Located in the men's section at the north end of campus on the main road. It has been in use since 2004. It is used for learning and administrative functions, and some student activities. It houses lecture rooms, labs, faculty member offices, meeting rooms and some food services.

Women's Foundation Building

Located in the women's section to the north and most west part of campus. It has been in use since 2004. It is used for learning functions, and some student activities. It houses lecture rooms, labs, faculty member offices, meeting rooms and some food services.

Men's College of Business and Economics

Located in the men's section on the main road just before the Foundation Building. It has been in use since 2001. It is used for learning functions and some student activities. It houses lecture rooms, labs, faculty member offices, meeting rooms and some food services.

College of Sharia and Islamic Studies/ College of Law Building

Located in women's section. It has been in use since 2001. It is used for teaching functions, and student activities. It houses lecture rooms, labs, offices and food services. The third floor is occupied for the College of Administration and Economics.

Al Bidaa Building

Located in women's section. It has been in use since 1995. It is used for learning functions and student activities. It houses offices, labs, lecture rooms. Part of the building is used as a kindergarden for children and educational training for the students of the College of Education.

MAJOR CAMPUS BUILDINGS

Women's Car Parking Building

Located in women's section. It has been in use since 1993. It is used for service functions. It houses offices and food services. It is considered as a main gate for female students to go to the different women's buildings.

Admission and Registration Building

Located at the northern border of the men's and women's sections. It has been in use since 2003. It is used for administrative functions, especially the subject registry and student's records. It houses offices.

Arena Pavilion Complex

Located at southeast of the men's section on the main road. It has been in use since 1984. It is used for sportive functions and student activities. It houses classrooms, offices, a football stadium and encircling track. It supports occupation of 5000 people.

Main Court Pavilion

Located in the men's section near the Arena Pavilion. It has been in use since 1984. It is used for sportive functions. It houses offices and other facilities. It supports occupancy of 900 people.

Tennis Court Pavilion

Located in the men's section on the main road above the Arena Complex. It has been in use since 1984. It is used for sportive functions and student activities. It houses offices, playgrounds for tennis, handball, basketball, and security. It supports occupancy of 900 people.

Swimming Pool Pavilion

Located in men's section near the Arena Pavilion Complex. It has been in use since 1984. It is used for sportive functions and student activities. It houses offices, 3 swimming pool, gymnasium hall, and security. It can support occupancy of 1500 people.

Men's Library Building

Located toward the north of the men's section. It has been in use since 1990. It is used for facility functions. It houses offices and reading halls.

Women's Library and Exhibition Hall Center Building

Located at the southern border of the men's and women's sections. It has been in use since 1984. It is used for facility functions, and it is considered as the distribution building for the students' textbooks. It houses offices and reading halls.

Mosque (Men)

Located in men's section. It has been in use since 1990. It is used for religious functions. It houses a prayer hall and service rooms.

Medical Clinic

Located in the women's section beside the Women's Activities Building. It has been in use since 1998. It is used for treatments and medical functions. It houses offices, testing rooms, and a pharmacy.

MAJOR CAMPUS BUILDINGS

Old Central Services Unit

Located in men's section in front of the Business Operation Department. It has been in use since 1984. The Central Services Unit is used for service function. It houses service machines such as the chillers.

Men's Activities Building

Located in the men's section below the Administration Building. It has been in use since 1986. The Men's Activity Building is used as a center for External Relations and Men's Student Activities, as well as career services. It houses offices, halls, entertainment facilities and some food services.

Women's Activities Building

Located in the women's section. It has been in use since 1986. The Women's Activities Building is used for Women's Student's Activities, Career Services, the Student Counseling Center, and the Student Learning Support Center. It houses offices, labs, class rooms, entertainment facilities and some food services.

Women's Sports Facility Building

Located in women's section. It has been in use since 1986. It is used for sportive teaching and student activities. It houses a main playground, sports halls, lecture rooms, and some food services.

Bookstore

Located north of the men's section. It has been in use since 2002. It is used for service functions and houses offices.

Islamic Research Center

Located in the men's section. It has been in use since 2004. It is used for research functions and houses offices.

Research Facilities Buildings

Located outside the campus (Off-Campus), at the original site of the old campus. They have been in use since 1984. They are used for research and testing functions, and houses labs and offices.

Material Technology Unit

Located in the men's section. It has been in use since 1984. It is used for testing and teaching, and research functions. It houses classrooms, labs and offices.

Central store

Located in the men's section at the junction separating the main road and the road to the women's section. It has been in use since 1984. It is used for service functions. It is the main store in the university and is overseen by the Business Operations Department. It houses offices and materials.

Maintenance Store

Located in the men's section. It has been in use since 1984. It is used for service functions and houses offices, stores and workshops.

Chemical Store

Located in the men's section. It has been in use since 1994. It is used for research functions, and houses offices and research labs.

10

9

7

8

4



EXISTING BUILDINGS

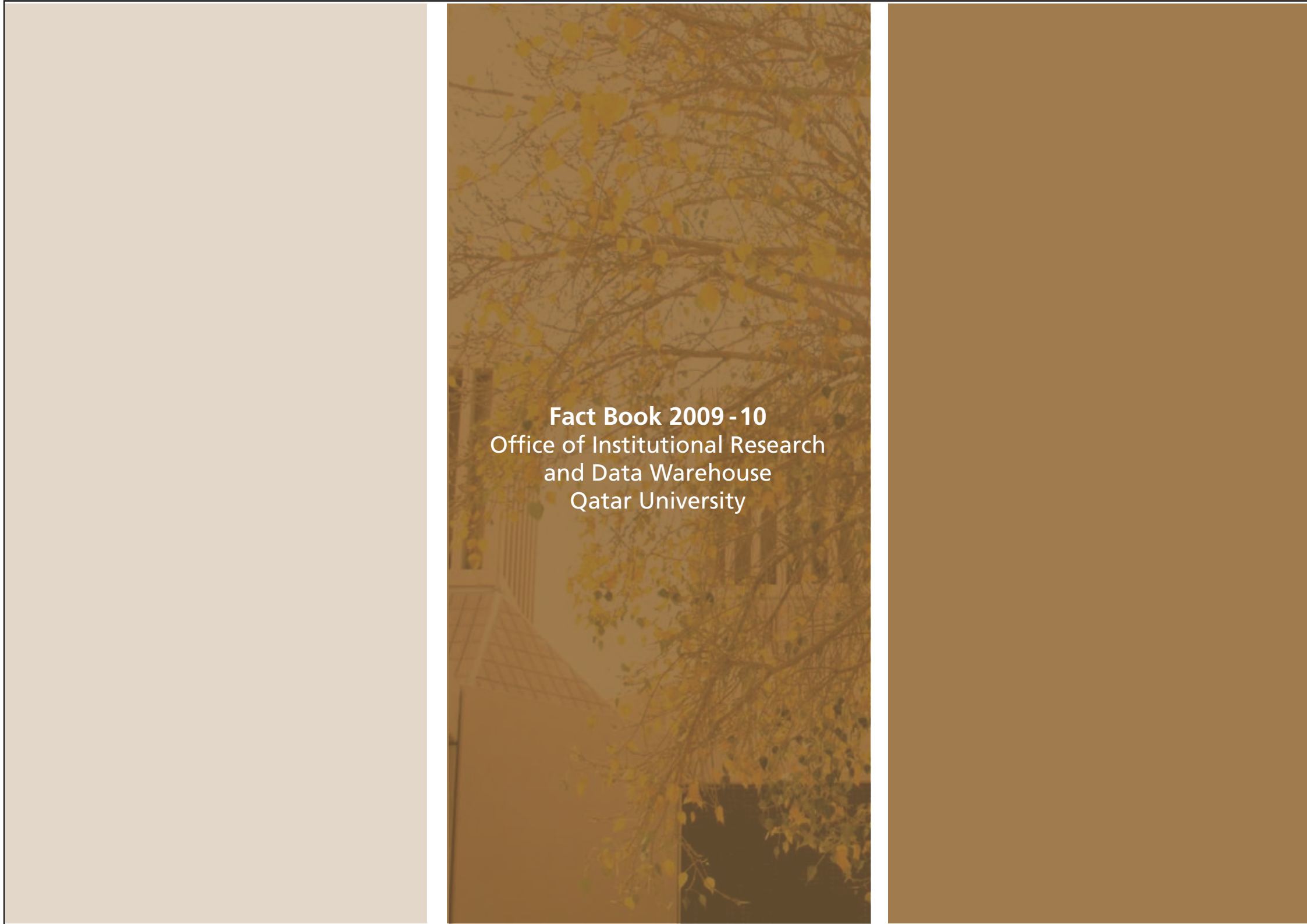
- A01 ARENA PAVILION COMPLEX
- A02 MAIN COURT PAVILION
- A03 TENNIS COURT PAVILION
- A04 SWIMMING POOL PAVILION
- A05 MEN'S COLLEGE OF BUSINESS AND ECONOMICS
- A06 MEN'S FOUNDATION
- B01 UNIVERSITY ADMINISTRATION
- B02 MEN'S ACTIVITY CENTER
- B03 INFORMATION TECHNOLOGY SERVICES
- B04 COLLEGE OF EDUCATION
- B05 MAIN MEN'S BUILDING
- B06 ENGINEERING ANNEX
- B07 ENGINEERING WORKSHOP
- B08 GREEN HOUSE
- B09 MEN'S LIBRARY
- B10 QATAR NATIONAL BANK

- B11 IBN KHALDOON HALL
- B12 MOSQUE
- BCR CORRIDORS A-J
- C01 WOMEN'S COLLEGE OF SCIENCE A-F
- C02 EXHIBITION HALL
- C03 WOMEN'S LIBRARY
- C04 MAIN WOMEN'S BUILDING
- C05 WOMEN'S ACTIVITY CENTER
- C06 MEDICAL CLINIC
- C07 WOMEN'S NEW CLASSROOMS
- C08 BUSINESS OPERATIONS DEPARTMENT (BOD)
- C09 CENTRAL SERVICE UNIT
- C10 BOD PORTACABINS
- C11 COLLEGE OF SHARIA AND ISLAMIC STUDIES
- D01 AL-BIDA
- D02 WOMEN'S CAR PARK ARENA
- D03 WOMEN'S SPORTS FACILITY

- D04 WOMEN'S FOOD COURT
- D05 WOMEN'S FOUNDATION
- H01 CHEMICAL STORE
- H02 MAINTENANCE STORE
- H03 CENTRAL STORE
- H04 BOOK STORE
- H05 METEOROLOGICAL TECHNOLOGY UNIT
- H06 ISLAMIC RESEARCH CENTER
- H07 ENERGY CENTER
- I01 GENERAL SERVICE SECTION

BUILDING UNDER CONSTRUCTION

- 7 SCHOOL OF BUSINESS BUILDING
- 8 LIBRARY BUILDING
- 9 RESEARCH COMPLEX BUILDING
- 10 CENTRAL SERVICE UNIT (CSU)



Fact Book 2009 - 10
Office of Institutional Research
and Data Warehouse
Qatar University