



FACT BOOK

2012 - 2013



FACT BOOK

2012 - 2013

An OIPD Yearly Publication

Contents

ACKNOWLEDGMENTS	6	STUDENTS	39
PREFACE	6	REGISTERED STUDENTS BY, ACADEMIC LEVEL, COLLEGE, MAJOR, QATARI CITIZENSHIP AND GENDER	40
QATAR UNIVERSITY	9	REGISTERED STUDENTS BY COUNTRY/REGION	44
VISION AND MISSION	11	AVERAGE CLASS SIZE BY COLLEGE	45
- Vision	11	STUDENT - FACULTY RATIO	46
- Mission	11	ADMISSION STATISTICS BY ACADEMIC LEVEL, QATARI CITIZENSHIP AND GENDER	47
- Key Performance Areas	11	NEWLY AWARDED SCHOLARSHIPS BY TYPE & COLLEGE	48
ABOUT QATAR UNIVERSITY	12	TOP 10 BACHELOR PROGRAMS WITH HIGHEST NUMBER OF REGISTERED STUDENTS	50
A GLANCE AT HISTORY	12	GRADUATION AND RETENTION	51
OUR CAMPUS	12	- Degree-Seeking First-Time Freshmen Undergraduate One-Year Retention Rate	51
STRATEGIC PLAN	14	- Graduation Rates	53
MEMORANDA OF UNDERSTANDING (MOU)	15	TUITION FEES BY COLLEGE AND LEVEL	53
ORGANIZATION	19	STUDENT FINANCIAL AID	54
ORGANIZATIONAL CHART	20	STUDENT SURVEYS AY 2012-2013	55
BOARD OF REGENTS	22	FACULTY AND STAFF	57
PRESIDENT	22	TEACHING STAFF BY YEARS OF WORK IN QU, QATARI CITIZENSHIP, AND GENDER	58
VICE PRESIDENTS	22	- Faculty	58
DEANS OF COLLEGES	22	- Foundation	58
ORGANIZATIONAL STRUCTURE	22	FACULTY BY RANK	58
ACADEMIC PROGRAMS AND RESOURCES	25	TEACHING STAFF BY NATIONALITY	59
ACADEMIC PROGRAMS OFFERED BY COLLEGES	26	GRADUATE STUDIES SPONSORSHIP	60
ACCREDITATION STATUS FOR SELECTED ACADEMIC PROGRAMS	28		
ACADEMIC RESOURCES	29		
- Information Technology	29		
- Library	31		
- Educational Support Services	32		



STAFF STATISTICS	60
RESEARCHERS STATISTICS	60
FACULTY AND STAFF SURVEYS AY 2012-2013	62
GRADUATION	65
GRADUATES BY ACADEMIC LEVEL, COLLEGE, MAJOR, QATARI CITIZENSHIP, AND GENDER	66
GRADUATES BY COUNTRY/REGION	69
GRADUATES TREND FOR THE PAST FIVE YEARS	69
ALUMNI	71
ALUMNI FACTS	72
ALUMNI SURVEYS AY 2012-13	73
RESEARCH CENTERS	77
ACADEMIC RESEARCH	78
- External Grants	79
RESEARCH CENTERS	85
- Center for Advanced Materials	85
- Gas Processing Center	85
- SESRI	85
- Environmental Studies Center	86
COMMUNITY SERVICES AND OUTREACH	89
STUDENT PROJECTS	91
- Al BairaQ project	91
- Gasna Contest	91
- Life is Engineering	92

CONTINUING PROFESSIONAL PHARMACY DEVELOPMENT (CPPD) PROGRAM	93
FACULTY PARTICIPATION IN COMMUNITY SERVICE ACTIVITIES	96
FOUNDATION PROGRAM: COMMUNITY SERVICE	96
NATIONAL CENTER FOR EDUCATOR DEVELOPMENT	96
THE EARLY CHILDHOOD CENTER	98
EVENTS	101
QATAR UNIVERSITY EVENTS	102
PARTICIPATION IN EXTERNAL EVENTS	104
PHYSICAL FACILITIES	107
BUILDINGS	108
CAR PARKING	112
CLASSROOMS	112
CAMPUS MAP	114



Acknowledgments

The task of compiling comprehensive facts about an institution such as Qatar University is a group effort. No single office or division can hope to house all of the information needed to accomplish this task. Appreciation and many thanks go to the staff members from the Divisions of Institutional Planning and Development, Academic Affairs, Administration and Finance, Student Affairs, External Relations, Research, and Colleges who provided valuable assistance in the preparation of this Fact Book.

Preface

The 2012-2013 Fact Book is intended to provide the university community and others with a summary of institutional data about Qatar University. The Fact Book is a consolidation of institutional information gathered from various sources and is issued annually in October. It contains many tables and graphs, which are found helpful by administrators, faculty, staff, students, and other constituents of the university.

As a new practice, the fact book will annually highlight a theme of major significance to Qatar University for that particular year. This year we have opted to focus on “Research”.



The academic year of 2012-2013 has shown a continuous and fast development in the research sector at QU. The university has managed to increase its external research funds, mainly from Qatar National Research Fund. In the 6th cycle of the NPRP, QU researchers have managed to obtain 63 awarded proposals out of a total of 137; which translates into about 46% of the total number of awarded proposals: “the highest among awarded institutes”.

QU has also concluded a major plan for identifying its research priorities for the next five years. These priorities will set the direction for QU in many ways including establishing new research programs, centers and partnerships.

The Office of Institutional Research, in its ongoing effort to provide timely information and analysis, will continue refining this document each year. We hope you will review this document closely and use it on a continual basis. You may access the Fact Book online at <http://www.qu.edu/oipd>. Please take the time to provide us with any feedback you may have concerning the Fact Book. This will give us the opportunity to deliver improved products and services.

All comments regarding the Fact Book should be addressed at
Phone: 4403-3670
Email: vpjpd@qu.edu.qa



28.7%

Compound annual growth rate (11-2007), making QU the fastest-growing university in Research in the Middle East.

In 2011, Qatar University has produced 1% of the Middle East output publications, compared to 0.7% in 2007. (Output growth and impact of Qatar University Scientific Research, Elsevier April 2013)

...higher education is our social
...higher quality national
...to that und
...shape pre
...omm



Qatar University Vision and Mission

The vision and mission of Qatar University emerged through open discussions, the free exchange of ideas, respectful debate, and a commitment to rigorous inquiry by QU's intellectual and scholarly community. All members of the University - faculty, staff, and students - are expected to advance the scholarly and social values embodied by the university.

Vision

Qatar University shall be a model national university in the region, recognized for high-quality education and research and for being a leader of economic and social development.

Mission

Qatar University is the national institution of higher education in Qatar. It provides high quality undergraduate and graduate programs that prepare competent graduates, destined to shape the future of Qatar. The university community has diverse and committed faculty who teach and conduct research, which address relevant local and regional challenges, advance knowledge, and contribute actively to the needs and aspirations of society.

Key Performance Areas

- Prepare competent graduates by providing high quality education.
- Conduct quality research that addresses contemporary challenges and advances knowledge.
- Identify and meet the needs and aspirations of society.
- Provide effective and efficient support and facilities for academic missions and maintain a supportive environment for the university community.



About Qatar University

Since its inception in 1973, Qatar University (QU) continues to serve as the country's premier national institution of higher education. It comprises seven colleges: Arts and Sciences, Business and Economics, Education, Engineering, Law, Pharmacy, and Sharia and Islamic Studies.

Qatar University offers over 60 specializations - the widest range in the country. While the majority of its courses are at the undergraduate level, QU currently offers 26 programs at graduate level -- 19 Masters, 4 Diplomas, 1 PharmD, and 1 Doctoral programs.

Programs and courses offered at QU are designed in alignment with the needs and requirements of the society and labor market of Qatar. They are further strengthened by close working links with business, industry, and other professional sectors. QU's teaching, learning and research environment is fuelled by innovation and collaboration, and underlines its commitment to produce graduates who will contribute to the development and progress of the country.

In addition to a well-equipped state-of-the-art library, the university has a number of support-for-learning centers and units, including an audio library, e-library, education-technology center, advanced video-conferencing facilities, and international-standard laboratories. Students are further supported by Blackboard and lecture capture technologies in classrooms across the campus that provide opportunities to access relevant course information, and to revisit lectures, workshops and classroom discussions. The Office for Faculty and Instructional Development (OFID) serves the professional development needs of faculty, providing opportunities for experience-sharing and teaching/learning skills-building.

QU also boasts a research and academic infrastructure which meets rigorous international-standards. It has a fast-growing reputation as a leading center for research in the country. This can be seen in the number of specialized

centers at QU which focus on a number of research areas reflecting the needs and concerns of the wider community, such as the environment, life in Qatar, road and traffic safety, materials processing, mobility innovations, marine conservation, laboratory management and safety, and educator development. A multi-million dollar Research Complex which will house these centers is expected to be launched in the near future.

With seven colleges, a student body of around 12,000, a faculty community numbering almost 700 members, and over 33,000 graduates, the University is well-positioned as the country's beacon of quality education and academic excellence.

This is further evidenced by the number of MOUs and Chair positions gained through its cooperation with partners from academia, industry, business, government, and civil society in Qatar, regionally, and internationally. QU's success in gaining accreditation from leading international accrediting bodies also stands as a testament to the quality and excellence of the education it provides.

A Glance at History

In 1973, acknowledging education as a key contribution to Qatar's growth and development, the Emir of Qatar issued a decree proclaiming the establishment of Qatar's first national College of Education. In its first year, 57 male and 93 female students were admitted to the College.

Rapid development of the country prompted the expansion of the College to accommodate new areas of specialization. In 1977, Qatar University was founded with four colleges: Education; Humanities and Social Sciences; Sharia, Law, and Islamic Studies; and Science. In 1980, the College of Engineering was established, followed by the College of Business and Economics in 1985. The College of Pharmacy was launched in 2008, having been reformed from the Pharmacy Program.

Our Campus

Qatar University's campus is situated on the northern edge of Doha, approximately 16 kilometers from the city center; however, it has become part of the greater Doha. It overlooks the coast, Doha Golf Course, West Bay Lagoon housing complex, and is in relatively close distance from the Pearl and Al-Wusail commercial and residential development projects on the eastern side. QU also has an experimental farm located 65 km north of Doha.

The main campus is built on a total area of about 8 square kilometers, featuring distinguished and modern architecture that also reflects the ideals of traditional Islamic design and the university's position as a leading proponent of Islamic, Arabic, and Qatari values.

The campus is divided into two sections - male and female, each with its own lecture halls, laboratories, learning-support units, and sports and cafeteria facilities.

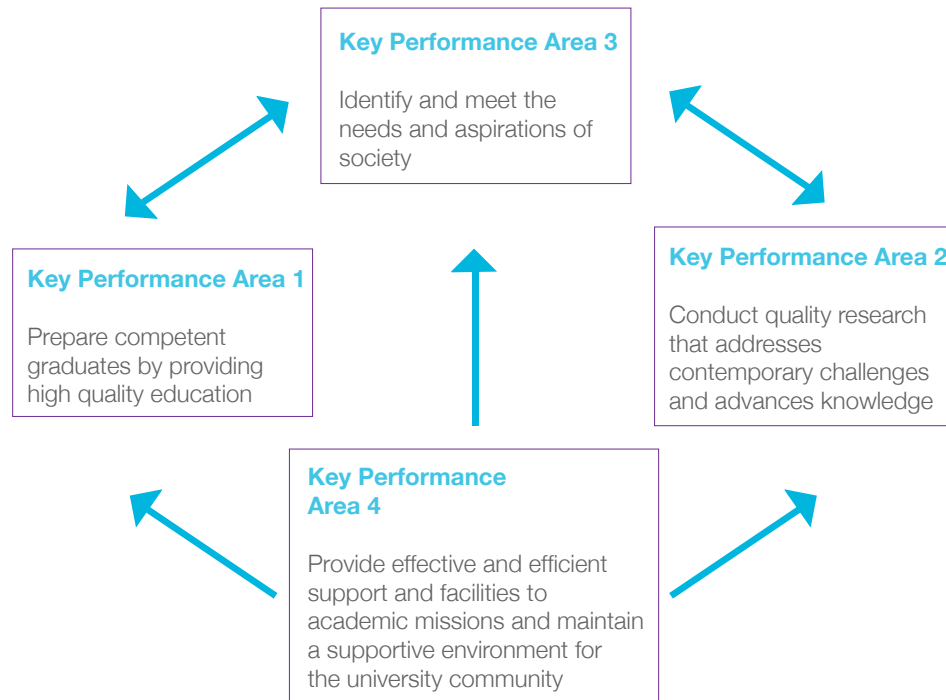




Strategic Plan

The first QU Strategic Plan cycle was launched in 2010 to cover the academic years 2010/2011 through 2012/2013. The plan has four Key Performance Areas that focus on promoting quality education and efficient and effective services. Guided by the University mission and vision, a set of objectives and indicators (Key Performance Indicators, KPI's) have emerged from the work of many committees, meetings, and discussions; with significant assistance provided by an independent external consultant.

In 2012-2013, QU started the process of preparing the second cycle of Strategic Plan that will cover the academic years 2013/2014 through 2015/2016.



Memoranda of Understanding (MoU)

Qatar University has signed MOUs with several associations, councils, Ministries, corporations, Universities and Colleges. As per the latest list of active MOU's, the distribution of MOU's per type of external party is as follows:

Type of External Party	# MOU's
Associations, Councils & Ministries	6
Colleges & Universities	6
Corporations	10
Total	22

Some selected MOUs that have been newly signed in 2012-2013, are listed below:

#	Category of External Party	External Party	Subject	Start Date	End Date
1	Associations, Councils & Ministries	U.S. Embassy	Establish Qatar University Library American Resource Center	1-Oct-12	1-Oct-13
2	Associations, Councils & Ministries	Doha Center for Media Freedom	Define the commitment and intention of both organizations to cooperate on promoting media and information literacy as a key component in the education of young people	14-Nov-12	14-Nov-15
3	Associations, Councils & Ministries	Ministry of Business and Trade	Cooperation Agreement	20-Feb-13	-
4	Associations, Councils & Ministries	Ministry of Foreign Affairs	Program of future ambassador	7-Apr-13	-
5	Associations, Councils & Ministries	Qatar Tourism Authority	Cooperation Agreement	1-May-13	1-May-15
6	Associations, Councils & Ministries	Qatar Research and Technology Center QSTP-LLC	Cooperation Agreement	16-Jun-13	16-Jun-14
7	Corporations	RasGas	Al-Bairaq Sponsorship Agreement	1-Sep-12	31-Aug-13

#	Category of External Party	External Party	Subject	Start Date	End Date
8	Corporations	Qatar Fertilizers Company (QAFCO)	Provide assistance to QU in order to graduate qualified Qatari Nationals to work in the company	5-Nov-12	5-Nov-15
9	Corporations	Occidental Petroleum	Create a faculty chair position	5-Dec-12	5-Dec-15
10	Corporations	Occidental Petroleum	Faculty chair position in engineering program	5-Dec-12	5-Dec-12
11	Corporations	ORYX GTL Ltd.	Provide assistance to the Gas Processing Center at QU in developing its research portfolio and to graduate qualified Qatari National	10-Dec-12	10-Dec-14
12	Corporations	Qatar Petroleum Development Co. LTD	Support the QU Energy and Environmental Law Forum at the College of Law	16-Dec-12	16-Dec-15
13	Corporations	1. Qatar Aluminum Limited Company 2. Hydro Aluminum	Establishment of a chair position in the Center of Advanced Materials	19-Mar-13	31-Aug-16
14	Corporations	1. Qatar Aluminum Limited Company 2. Hydro Aluminum	Cooperation Agreement	19-Mar-13	19-Mar-16
15	Corporations	ORYX GTL Limited (ORYX GTL)	Cooperation Agreement	12-May-13	30-Jun-14
16	Corporations	Qatar Petrochemical Company	Project Sponsorship Agreement	19-May-13	-
17	University/College	Peking University	General agreement for academic exchange	22-Nov-12	22-Nov-15
18	University/College	Community College of Qatar	Transferring CCQ credit hours to QU bachelor degree	10-Apr-13	-
19	University/College	Marmara University	Cooperation Agreement	21-Apr-13	21-Apr-18
20	University/College	Ningxia University	Cooperation Agreement	22-Apr-13	
21	University/College	Georgai University	Cooperation Agreement	22-May-13	22-May-18
22	University/College	University of Michigan	Collaborative Research Agreement	1-Sep-13	31-Aug-18



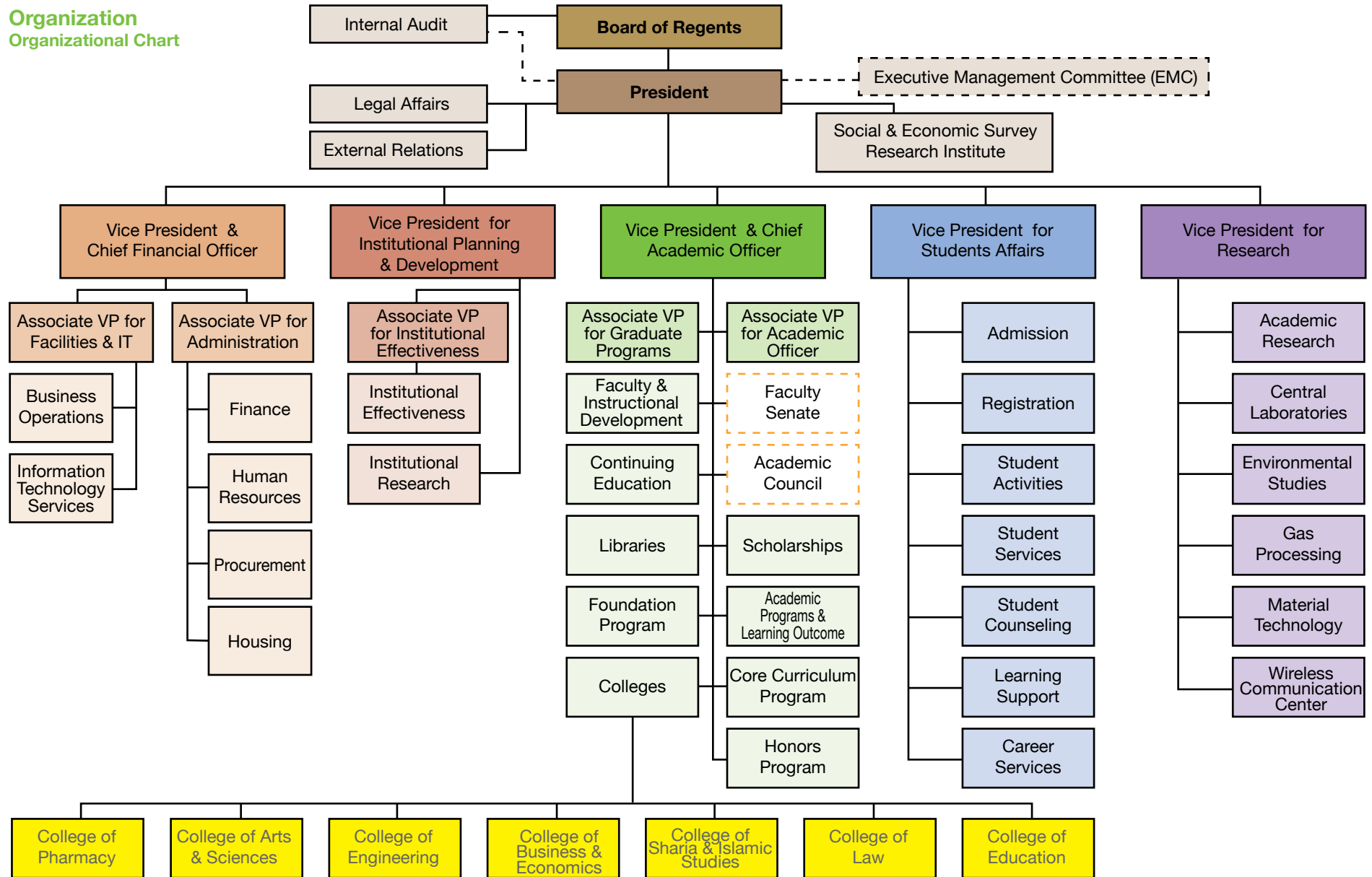
133

Research collaborations with leading institutions across the world.



ORGANIZATION

Organization
Organizational Chart



Updated in February 2012 based on: BOR's approval on 13th February 2012. Update in June 2013 (added Associate VP's which do not require BOR approval).



Board of Regents

H.H. Sheikh Tamim Bin Hamad Al Thani
Heir Apparent
Chairperson

H.E. Ahmed Bin Abdullah Al-Mahmoud,
Deputy Prime Minister
State Minister of Ministers Council Affairs
Vice Chair of the Board of Regents

Dr. Abdulla Bin Ali Al Thani
Educational Vice-President
Qatar Foundation
Chairman of Executive Committee

H.E. Saad Ibrahim Al Mahmmoud
Minister of Education and Higher Education,
Secretary General, Supreme Education Council
Member

H.E. Sheikh Faisal Bin Qassim Al Thani
Chairman, Qatari Businessmen Association
Member

H.E. Sheikh Hamad Bin Jabor Bin Jassim Al Thani
Director of the General Secretariat for Development
Planning
Member

Mr. Ahmad Mahdi Al Majed
Businessman
Member

Dr. Hessa Sultan Al-Jabir
General Secretary
ICT, Qatar
Member

Mr. Hamad Rashid Al Mahanadi
G.M. Ras Gas
Member

Dr. Peter Heath
Chancellor
American University of Sharjah
Member

Roger Benjamin, Ph.D.
President
Council for Aid to Education (CAE)
Member

Prof. Sheikha Bint Abdulla Al Misnad
President QU
Member

Secretary General, Board of Regents
Prof. Abdel Aziz El Said El Bayoumi
Academic Advisor of the QU President

President

Prof. Sheikha Bint Abdulla Al Misnad

Vice Presidents

Dr. Humaid Abdullah Al-Midfaa
Vice President and Chief Financial Officer

Dr. Mazen Hasna
Vice President and Chief Academic Officer

Dr. Omar Mohamed Al-Ansari
Vice President of Student Affairs

Dr. Hassan Al-Derham
Vice President of Research

Prof. Saif Said Al Sowaidi
Vice President of Institutional Planning
and Development

Deans of Colleges

Dr. Eiman Mohamed Mustafawi
Dean, College of Arts and Sciences

Prof. Nitham Mohammed Hindi
Dean, College of Business & Economics

Prof. Hessa Al-Sadiq
Dean, College of Education

Dr. Rashid Alammari,
Acting Dean, College of Engineering

Dr. Hassan Abdelrahim Moh'd Okour
Dean, College of Law

Prof. Sherief Khalifa
Acting Dean, College of Pharmacy

Dr. A.hakeem Yousuf A Alkhelaifi
Dean, College of Sharia & Islamic Studies

Organizational Structure

Office of the President

- EMC Affairs
- + Office of Legal Affairs
- + Office of Internal Audit
- + Social and Economic Survey Research Institute (SESRI)
 - Office of the Social and Economic Survey Research Institute (SESRI)
 - Research Department
- + External Relations Department
 - Alumni and Partner Relations Office

- Marketing Communications Office
- Events Office

+ Office of the Vice President and Chief Financial Officer

- Associate Vice President for Facilities and Information Technology
 - o Information Technology Department
 - o Business Operation Department
 - o Enterprise Project Management office
- Associate Vice President for Administration
 - o Finance Department
 - o Human Resources Department
 - o Procurement Department
 - o Housing Department
- Health Clinic

+ Vice President of Institutional Planning and Development

- Institutional Effectiveness
- Institutional Research

+ Office of the Vice President and Chief Academic Officer

- Office of the Associate Vice President for Graduate Programs
- Office of the Associate Vice President for Faculty Affairs
- Office of Academic Programs and Learning Outcomes Assessment
- Office of Faculty and Instructional Development
- Office of Continuing Education
- Office of Scholarships
- QU Libraries
- Academic Council
- Faculty Senate
- Foundation Program
- Core Curriculum Program
- Honors Program
- Colleges
 - o College of Arts and Sciences
 - o College of Business and Economics
 - o College of Education
 - o College of Engineering
 - o College of Law

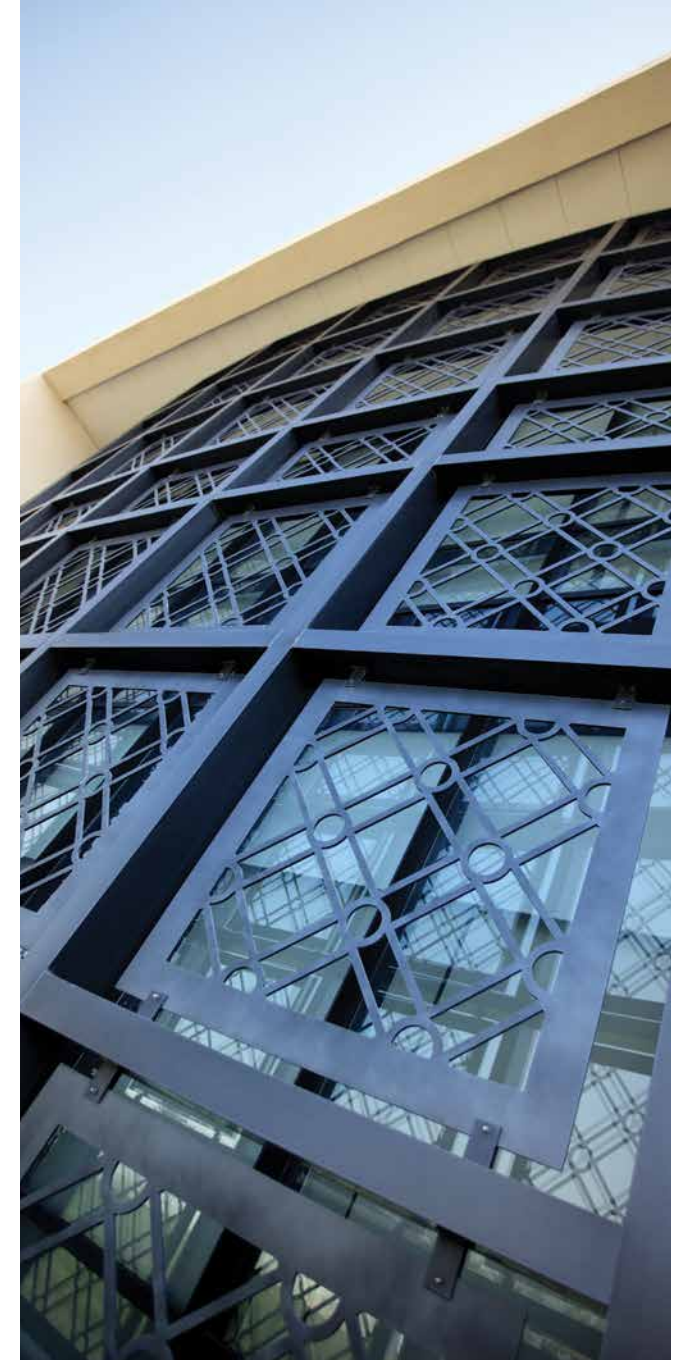
- o College of Pharmacy
- o College of Sharia and Islamic Studies

+ Office of the Vice President of Student Affairs

- Office of Student Information System
- Office of Admin and Finance Affairs
- Student Activities Department
- Career Services Center
- Student Counseling Center
- Academic Advising and Retention Center
- Student Learning Support Center
- Student Services Department
- Admission Department
- Registration Department

+ Vice President of Research

- Environmental Studies Center
- Center for Advanced Materials
- Gas Processing Center
- Qatar Mobility Innovation Center
- Central Laboratories Unit
- Office of Academic Research



Engineering, Computer Science, Chemical Engineering and Energy are of particular strength in citation impact. (Output growth and impact of Qatar University Scientific Research, Elsevier April 2013)

Academic Programs and Resources

Academic Programs Offered by Colleges

Degree title	Major	Credit hours
Arts and Sciences		
Master of Arts	Arabic Language & Literature	33
Master of Arts	Gulf Studies	36
Master of Science	Environmental Sciences	34
Master of Science	Biomedical Sciences	36
Bachelor of Arts	Arabic Language	120
Bachelor of Science	Biological Sciences	120
Bachelor of Science	Biomedical Sciences	135
Bachelor of Science	Chemistry	120
Bachelor of Arts	English Literature & Linguistics	120
Bachelor of Science	Environmental Sciences (Marine Sciences)	125
Bachelor of Science	Environmental Sciences (Biotechnology)	126
Bachelor of Arts	History	120
Bachelor of Science	Human Nutrition	132
Bachelor of Arts	International Affairs	120
Bachelor of Arts	Mass Communication	126

Degree title	Major	Credit hours
Bachelor of Arts	Social Work	120
Bachelor of Arts	Sociology	120
Bachelor of Science	Sport Science	120
Bachelor of Science	Statistics	120
Bachelor of Science	Public Health	120
Bachelor of Arts	Policy Planning & Development	120
Bachelor of Arts	Psychology	120
Certificate	Arabic for Non-Native Speakers	-
Business and Economics		
Master of Accounting	Accounting	30
Master of Business Administration	Business Administration	36
Bachelor of Business Administration	Accounting	125
Bachelor of Business Administration	Finance	125
Bachelor of Business Administration	Management	125
Bachelor of Business Administration	Marketing	125
Education		
Master of Education	Education Leadership	33
Master of Education	Special Education	33
Bachelor of Education	Primary Education	120
Bachelor of Education	Secondary Education	120

Degree title	Major	Credit hours
Diploma	Early Childhood	30
Diploma	Primary Education	30
Diploma	Secondary Education	30
Diploma	Special Education	30
Engineering		
Doctor of Philosophy	Engineering	60
Master of Science	Computing	31
Master of Science	Engineering Management	36
Master of Science	Environmental Engineering	35
Master of Science	Urban Planning & Design	45
Master of Science	Civil Engineering	36
Master of Science	Electrical Engineering	36
Master of Science	Mechanical Engineering	36
Bachelor of Science	Architecture	160
Bachelor of Science	Chemical Engineering	131
Bachelor of Science	Civil Engineering	131
Bachelor of Science	Computer Engineering	128
Bachelor of Science	Computer Science	120
Bachelor of Science	Electrical Engineering	131
Bachelor of Science	Industrial & Systems Engineering	128

Degree title	Major	Credit hours
Bachelor of Science	Mechanical Engineering	131
Law		
Bachelor of Law	Law	123
Pharmacy		
Doctor of Pharmacy *	Pharmacy	209
Master of Science	Pharmacy	33
Bachelor of Science	Pharmacy	173
<i>* inclusive of previous coursework</i>		
Sharia & Islamic Studies		
Master of Sharia & Islamic Studies	Fiqh & Usul Al Fiqh	36
Master of Sharia & Islamic Studies	Quran Sciences & Exegesis	33
Bachelor of Sharia & Islamic Studies	Dawa	120
Bachelor of Sharia & Islamic Studies	Islamic Studies	120

Accreditation Status for Selected Academic Programs

Accredited Programs	
QU Program / College	Accrediting Body
College of Business and Economics	AACSB - Association to Advance Collegiate Schools of Business
Accounting	
Management	
Marketing	
Finance	
MBA	
College of Pharmacy (BS)	
College of Education	IRTE - International Recognition in Teacher Education
Primary Education program, BE	
Primary Education program, BE	
Diploma in Primary Education	
Diploma in Secondary Education	
Master of Education in Special Education	
Master of Education Educational Leadership	

College of Engineering:	ABET, Inc.
Chemical Engineering	
Civil Engineering	
Electrical Engineering	
Mechanical Engineering	
Industrial and Systems Engineering	
Computer Science	
Computer Engineering	
Foundation Program English	CEA - Commission on English Language Accreditation
College of Arts and Sciences	
Chemistry	CSC- Canadian Society for Chemistry
Biomedical Sciences	NAACLS - National Accrediting Agency for Clinical Laboratory Sciences
Statistics	RSS - Royal Statistical Society
Environmental Sciences, BS	CHES - Institution of Environmental Sciences and Committee of Heads of Environmental Sciences
Environmental Sciences, MSc	CHES - Institution of Environmental Sciences and Committee of Heads of Environmental Sciences
Mass Communication	ACEJMC – Accrediting Council on education in Journalism and Mass Communication

Academic Resources

Information Technology

IT Services provides and maintains state-of-the-art computing equipment in the classrooms to enable and facilitate teaching, learning and communication for Qatar University. Furthermore, IT services supports the Blackboard Learning System -a course management system- enabling instructors to provide their students with course materials, discussion boards, virtual chat, online assessments, and a dedicated academic resource center on the web. QU utilizes the Enterprise version of Blackboard, which automatically creates resources for all courses and populates them with faculty and student enrollment data.

Academic Computing	
<i>Classroom Technology Services</i>	
• Number of classrooms equipped with smart technology	347
• Number of computer labs	117
• Number of PC's managed in the labs	2300
• Percentage of computer labs managed by ITS	90
<i>Curricular Computing</i>	
• Number of active Blackboard courses	1850
<i>Digital Signage⁹⁰</i>	
• Number of digital signage units	120
Administrative Computing	
<i>Student Information System (Banner)</i>	
• Number of users (including students, faculty and staff)	18000
<i>Oracle e-Business Application</i>	
• Number of users	3000
<i>Major Oracle e-Business Projects</i>	
• I-Recruitment implementation (Oracle E-Business)	
• Banner Upgrade: Banner 8 to Banner XE (hardware and software)	
• I-Supplier implementation (Oracle E-Business)	

Technical Services	
<i>Email</i>	
• Number of managed mailboxes	24340
• Average number of email messages handled weekly (internal and external)	350000
<i>The Network</i>	
• Number of wired ports	31000
• Number of wireless access points	1450
• Observed maximum number of wireless devices connected at one time	9000
• Number of network-connected printers	450
<i>Centralized Computing Resources</i>	
• Number of functional servers (physical and virtual)	532
• Data storage installed (Terabytes)	269
Computer Support and Consulting Services	
<i>Help Desk and Consultancy Calls or Visits</i>	
• Number of helpdesk calls resolved/closed -all year	12357
<i>Web Publishing</i>	
• Number of active websites	53



Library

The library is at the core of research and learning at Qatar University. It aims to support curriculum needs, and to contribute to the quality of the overall learning experience at Qatar University by continuously expanding its collections and e-resources.

Library Collection

Description	Titles	Volumes
Arabic Collection	60,332	204,292
English Collection	67,657	139,751
Qatari Collection (1)	1,492	4,088
Special Collections (2)	315	
CDs + DVDs	536	
Electronic databases	105	
e-books	118,589	
e-journals	76,442	
English Periodicals (Print Archive)	2,555	
Arabic Periodicals (Print Archive)	530	

(1) A collection of photos, publications, and productions about Qatar.

(2) A rare collection of first-edition books, periodicals and manuscripts on various topics.



Educational Support Services OFID

The Office of Faculty and Instructional Development (OFID) supports QU academic staff with ongoing professional development programs and resources. OFID aims to facilitate and support faculty research endeavors and the implementation of best teaching practices in a collaborative working environment through workshops and seminars on curriculum enhancement and innovations.

In order to continuously improve the teaching and learning process, OFID has offered numerous workshops / seminars and training programs that support faculty members in the 4 areas of active learning, assessment, technology and research. To always be closer to faculty members and respond to their needs, OFID further advanced its services in:

- Integrated technology that enhances faculty members' skills (BB9.0 & BB9.1, Respondus, Socrative clickers, etc.)
- One- to-one consultations to Faculty through OFID Support (Blackboard and Research)
- Lecture-captured workshop sessions using the Echo 360 system
- Online professional development training
- Annual events (Assessment week, Orientation Days (YAHALA), 4th OFID Days, EduTech Days, and June PD Activities.)
- Updated list of online resources (Educational conferences, Blackboard resources, OFID Workshop materials, etc.).



OFID services to faculty members (from June 2012 to May 2013)

Service	Theme	No. of Topics	No. of Sessions	No. of Participants
Workshops/Follow-up	Active Learning	34	52	839
Workshops/Follow-up	Technology (to enhance Active learning, Research and Assessment)	21	82	515
Workshops/Follow-up	Assessment at the Course Level	6	8	51
Workshops/Follow-up	Assessment at the Program Level	4	30	153
Workshops/Follow-up	Research	6	9	41
Workshops/Follow-up	New Faculty	5	14	182
Seminars	General Seminars (E-books and Digital Solutions, Teaching Standards, Management, etc.)	9	13	272
Sub Total		85	208	2053
Consultations	Technology	-	168	168
Consultations	Research	-	11	11
Consultations	Active Learning -Peer Observations	-	26*	24
Grand Total		-	413	2256

* Some colleagues were observed twice.

Faculty members' participation in OFID activities* by College/Program (from June 2012 to May 2013)

College	No. of Participants (Recurrent)	No. of Participants (Actual)	Total No. of Faculty per College**	Percentage of Participation
CAS	693	209	271	77%
CBE	147	47	60	78%
CED	189	48	59	81%
CENG	206	89	161	55%
CLAW	37	15	31	48%
CPH	51	15	21	71%
CSIS	247	37	42	88%
FP	362	107	154	69%
Sub-Total	1932	567	799	71%
QU Offices	-	-	-	-
(APLOA, Library, Students Affairs, etc.)	85	28	-	-
Other Universities	36	21	-	-
Grand Total	2053	616	-	-

* Excluding consultations

** Including non-instructional faculty & TAs

Student Learning Support Center

The Student Learning Support Center (SLSC) provides academic support services to all students at QU. Students can seek assistance with academic coursework, writing assignments, transitioning to college academic life, and other academic issues relevant to student success. SLSC programs and services include: peer tutoring, the Writing Lab, Supplemental Instruction (SI), the Math Lab, Express It, academic coaching, and academic success workshops.

Total Student Visits (duplicated head count)	19101
Women	14855
Men	4246
General Tutoring Sessions	4273
Women	3294
Men	979
Writing Consultations	2882
Women	2566
Men	316
Academic Coaching Sessions	
Women	92
Men	1
Supplemental Instruction Sessions	
Women	345
Men	140
Express It Sessions	
Women	88
Math Revision Sessions	
Women	29
Academic Success Workshops	43
Total # of Students Employed (peer tutors and administrative support)	68



Student Counseling Center

The Student Counseling Center (SCC) at Qatar University aims to enhance and enrich students' development, maturity and well-being. It provides students with guidance, support and opportunities to develop greater self-understanding to identify and solve problems, and to improve academic performance through the alleviation of psychological, emotional, and cognitive impediments. It also provides consultation initiatives to faculty and staff on issues that pertain to students in order to promote psychological health as a value to the QU community.

Facts about the Student Counseling Center

1. 806 students have used the SCC services during the year of 2012-2013;
2. 74% of students who came to the SCC did so for help with time management, personal difficulties, communication skill, and academic issues;
3. 669 students (or 83%) attended the workshops that were conducted by the SCC in 2012-2013.

The Student Counseling Center provides annual events and support groups for all QU students to improve their level of awareness and academic performance.

Events that were organized by the SCC:

1. World Mental Health Day.
2. Top Readers: 2013.
3. Support group for married students: 2013

In a student satisfaction survey conducted by the SCC, 80% of respondents reported that they had greatly benefited from the Center's services.

Career Services Center

The Career Services Center (CSC) assists students and alumni in achieving a clear vision of lifelong career planning and development, and offers a Student Employment Program, Career Opportunities, job fairs and Career counseling sessions.

The Student Employment Program aims to help students gain experience in a real working environment. The following are some statistics about student employment at QU during AY 2012-13:

		Male	Female	Total
Number of students who have registered in the Student Employment Program	Fall	354	652	1006
	Spring	598	999	1597
Number of students who got jobs	Fall	278	459	737
	Spring	269	489	758

Career Opportunities helps students explore majors and careers, seek internships or sponsorships and develop professional and job search skills. There are currently more than 502 sponsored students by different authorities, organizations and companies. During the AY 2012-2013, Career Opportunities at the CSC received over 52 employer contacts translating into 98 accepted nominees.

Total of employers	52
Total of all propositions (A proposition may consist of multiple positions)	79
Total of job propositions	57
Total of internship propositions	17
Total of sponsorship propositions	5
Total of nominees	642
Total of accepted nominees	98
Total of on-campus job interviews	24

The Career Path Program aims to provide students with skills that prepare them for a better future career. During AY 2012-13, it organized career counseling sessions and workshops with the following attendance:

Total number of students who attended individual career counseling sessions	164
Total number of students who attended group career counseling session	227
Total number of students and graduates who attended the career workshops	278

Special Needs Section

The Special Needs Section caters to students with visual impairments (blindness or low vision), physical impairments, dyslexia, speech problems, and hearing difficulties (who are not deaf but use hearing aids). It also caters to students who suffer from temporary disability such as temporary diseases or injury. Currently, it serves about 81 male and female students.



1.078

Undergraduate students
benefitted from Student
Grants.



STUDENTS

Students

Registered Students by, Level, College, Major, Qatari Citizenship and Gender

# of Students	Qatari		Non-Qatari		Total
	Female	Male	Female	Male	
Total	6,034	1,937	3,515	1,996	13,482
Foundation	334	165	274	260	1,033
Arts and Sciences	237	59	230	113	639
Science Foundation	217	52	212	88	569
Sport Science Foundation	20	7	18	25	70
Business and Economics	2	-	2	1	5
Business Foundation	2	-	2	1	5
Education	-	-	9	-	9
Education Foundation	-	-	9	-	9
Engineering	93	106	27	146	372
Engineering Foundation	93	106	27	146	372
Pharmacy	2	-	6	-	8
Pharmacy Foundation	2	-	6	-	8
Undergraduate	5,587	1,726	3,045	1,581	11,939
Arts and Sciences	2,417	411	1,457	334	4,619
Arabic Language	161	-	83	-	244

# of Students	Qatari		Non-Qatari		Total
	Female	Male	Female	Male	
Biology	13	-	47	-	60
Biomedical Sciences	6	-	41	-	47
Chemistry	11	3	57	14	85
English Language	38	-	18	-	56
English Literature & Linguistics	85	-	96	-	181
Environmental Sciences	21	6	30	28	85
General Arts	1,149	332	358	106	1,945
General Science	72	7	218	52	349
General Sport Science	9	1	18	14	42
Geography-Urban Planning	14	1	5	1	21
History	131	7	34	5	177
Human Nutrition	25	-	59	-	84
International Affairs	159	29	58	28	274
Mass Communication	156	19	156	73	404
Policy, Planning, and Development	8	1	2	2	13
Pre-Biomedical	8	-	24	-	32
Psychology	5	-	9	-	14
Social Work	141	-	45	-	186
Sociology	149	-	48	-	197

# of Students	Qatari		Non-Qatari		Total
	Female	Male	Female	Male	
Sport Science	19	3	14	8	44
Statistics	37	2	37	3	79
Business and Economics	1,566	735	426	377	3,104
Accounting	83	11	54	56	204
Finance	120	28	49	34	231
General Business	1,227	673	293	267	2,460
Management	84	18	16	13	131
Marketing	52	5	14	7	78
Education	397	20	202	53	672
Art Education	13	-	1	-	14
General Education	356	20	192	51	619
Physical Education	2	-	-	2	4
Primary Education	26	-	9	-	35
Engineering	422	197	523	684	1,826
Architectural Engineering	7	-	-	-	7
Architecture	34	-	40	-	74
Chemical Engineering	26	23	103	59	211
Civil Engineering	-	26	-	157	183
Computer Engineering	58	-	76	-	134

# of Students	Qatari		Non-Qatari		Total
	Female	Male	Female	Male	
Computer Science	43	17	53	37	150
Electrical Engineering	21	16	68	113	218
General Engineering	129	75	109	186	499
Industrial and Systems Eng.	104	-	74	-	178
Mechanical Engineering	-	40	-	132	172
Law	431	262	79	42	814
Law	431	262	79	42	814
Pharmacy	12	-	187	-	199
General Pharmacy	8	-	100	-	108
Pharmacy	4	-	87	-	91
Sharia and Islamic Studies	341	101	167	90	699
Dawa	136	32	62	26	256
General Sharia	36	21	22	14	93
Islamic Studies	147	44	77	50	318
Origin of Religion	11	2	3	-	16
Sharia	11	2	3	-	16
No College Designated	1	-	4	1	6
Undeclared	1	-	4	1	6
Masters	99	44	129	104	376

# of Students	Qatari		Non-Qatari		Total
	Female	Male	Female	Male	
Arts and Sciences	28	-	18	5	51
Arabic Language & Literature	8	-	4	1	13
Biomedical Laboratory Sciences	3	-	5	-	8
Environmental Sciences	11	-	5	1	17
Gulf Studies	6	-	4	3	13
Business and Economics	31	12	16	27	86
Accounting	3	-	4	7	14
Business Administration	28	12	12	20	72
Education	11	-	27	10	48
Education Leadership	10	-	19	6	35
Master of Special Education	-	-	1	-	1
Special Education	1	-	7	4	12
Engineering	20	13	57	56	146
Civil Engineering	-	-	-	6	6
Computing	7	3	26	13	49
Electrical Engineering	1	3	2	4	10
Engineering Management	8	7	16	21	52
Environmental Engineering	2	-	5	7	14
Mechanical Engineering	2	-	-	5	7

# of Students	Qatari		Non-Qatari		Total
	Female	Male	Female	Male	
Urban Planning and Design	-	-	8	-	8
Pharmacy	-	-	5	-	5
Pharmacy	-	-	5	-	5
Sharia and Islamic Studies	9	19	6	6	40
Fiqh and Usul Al Fiqh	5	15	4	5	29
Quranic Sciences and Exegesis	4	4	2	1	11
Doctor of Pharmacy	-	-	17	8	25
Pharmacy	-	-	17	8	25
Pharmacy	-	-	17	8	25
PhD	3	1	5	3	12
Engineering	3	1	5	3	12
Civil Engineering	-	-	1	1	2
Computer Science	1	-	1	1	3
Electrical Engineering	-	-	3	1	4
Engineering Management	1	1	-	-	2
Material Science and Engineering	1	-	-	-	1
Diploma	11	1	21	15	48
Education	11	1	21	15	48
Early Childhood	-	-	2	-	2

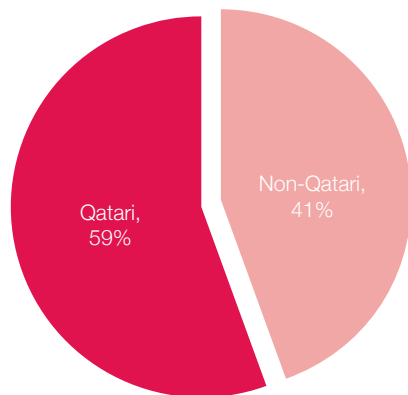


# of Students	Qatari		Non-Qatari		Total
	Female	Male	Female	Male	
Primary Education	8	-	14	-	22
Secondary Education	3	-	4	9	16
Special Education	-	1	1	6	8
Certificate	-	-	24	25	49
Arts and Sciences	-	-	24	25	49
Arab Language Study for Non-Native Speakers	-	-	24	25	49

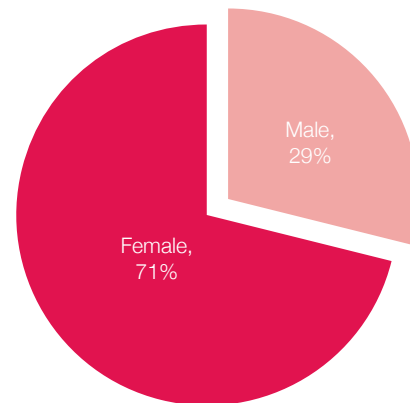
Registered Students by Country/Region

Country/Region	# of Students	Percentage
Qatar	7,971	59.1
GCC Countries	660	4.9
Arab, non-GCC Countries	3,827	28.4
Africa	81	0.6
Asia	779	5.8
Europe	54	0.4
North America	99	0.7
South America	1	0.0
Australia/Oceania	10	0.1
Total	13,482	

Registered Students by Qatari Citizenship



Registered Students by Gender



Average Class Size by College

(Lecture, Lecture/Lab, Lecture/Internship, and Seminars - where enrollment is greater than 3)

	Foundation		Undergraduate		Masters	
	Spring 2013	Fall 2012	Fall 2012	Spring 2013	Fall 2012	Spring 2013
Foundation Program	19.7	21.1	24.0	28.8	-	-
Arts and Sciences	-	-	36.0	34.8	7.8	6.3
Business and Economics	-	-	33.7	38.8	18.4	16.0
Education	-	-	43.9	41.9	15.2	14.0
Engineering	-	-	22.7	21.7	12.9	12.4
Law	-	-	33.4	30.1	-	-
Pharmacy*	-	-	19.3	19.2	4.0	4.0
Sharia and Islamic Studies	-	-	46.5	41.1	10.6	6.7
No College Designated	-	-	12.0	7.0	-	-

*Since some courses are identified with more than one level in the College of Pharmacy, they will be duplicated in the above figures.





Student Faculty Ratio

KPI	Fall 2012	Spring 2013	Reporting Period
Student to faculty ratio - Undergraduate (Based on Credit Hours, Yearly FTEF/Yearly FTES)*	NA	19:1	Spring
Student to faculty ratio - Master's Level (Based on Credit Hours, Yearly FTEF/Yearly FTES)*	NA	9:1	Spring
Student to Faculty ratio - University Level (Excluding Foundation, Based on Headcounts)**	21:1	21:1	Fall, Spring
Student to faculty ratio - Foundation Program (Based on Headcounts)**	11:1	8:1	Fall, Spring

* FTES or Student FTE is based on actual registered credit hours (1 yearly FTES = 30 credit hours Undergraduate & 18 credit hours Master).

FTEF or Faculty FTE is based on credit hours taught (1 yearly FTEF = 21 credit hours)

** Student Headcount is calculated as full-time students plus 1/3 part-time students, UG & Master's part-time students being students whose actual yearly credit load is less than 24 credits. & less than 18 credits respectively (PhD, PharmD, Certificate and Diploma students are all accounted for as full-time students).

Faculty Headcount is calculated as full-time instructional faculty plus 1/3 part-time faculty, based on faculty status in HR records.

Admission Statistics by Academic Level, Qatari Citizenship and Gender

	Applied	Admitted*	% of Admitted	Registered	% of Registered
Total	9,459	6,202	65.6	5,038	81.2
Undergraduate	8,351	5,836	69.9	4,704	80.6
Qatari	4,819	3,601	74.7	3,005	83.4
Female	2,673	1,981	74.1	1,789	90.3
Male	2,146	1,620	75.5	1,216	75.1
Non-Qatari	3,532	2,235	63.3	1,699	76.0
Female	1,848	1,222	66.1	991	81.1
Male	1,684	1,013	60.2	708	69.9
Masters	795	239	30.1	227	95.0
Qatari	233	96	41.2	92	95.8
Female	130	55	42.3	52	94.5
Male	103	41	39.8	40	97.6
Non-Qatari	562	143	25.4	135	94.4
Female	219	79	36.1	72	91.1
Male	343	64	18.7	63	98.4
PharmD	37	17	45.9	17	100.0
Qatari	1	0	0.0	0	/0
Female	1	0	0.0	0	/0
Non-Qatari	36	17	47.2	17	100.0
Female	25	11	44.0	11	100.0

* Students are admitted to the university not necessarily to the level they had applied to.

	Applied	Admitted*	% of Admitted	Registered	% of Registered
Male	11	6	54.5	6	100.0
PhD	51	7	13.7	7	100.0
Qatari	9	3	33.3	3	100.0
Female	4	2	50.0	2	100.0
Male	5	1	20.0	1	100.0
Non-Qatari	42	4	9.5	4	100.0
Female	8	3	37.5	3	100.0
Male	34	1	2.9	1	100.0
Diploma	156	39	25.0	34	87.2
Qatari	37	10	27.0	8	80.0
Female	30	9	30.0	7	77.8
Male	7	1	14.3	1	100.0
Non-Qatari	119	29	24.4	26	89.7
Female	51	20	39.2	18	90.0
Male	68	9	13.2	8	88.9
Certificate	69	64	92.8	49	76.6
Qatari	1	0	0.0	0	/0
Female	1	0	0.0	0	/0
Non-Qatari	68	64	94.1	49	76.6
Female	33	30	90.9	24	80.0
Male	35	34	97.1	25	73.5

Newly Awarded Scholarships by Type & College

Scholarships Type	Arts and Sciences	Business and Economics	Education	Engineering	Law	Pharmacy	Sharia and Islamic Studies	Grand Total
Embassies	39	10	4	33	2	11	7	106
GCC Qatari Certificate	36	9	21	7	3	-	7	83
Qatari Children	28	12	7	14	4	-	8	73
Islamic World Citizens	18	13	1	17	-	4	5	58
GCC Qatari Husband	22	2	11	-	1	-	7	43
GCC Qatari Mother	10	11	4	8	2	1	1	37
Qatar University Staff	15	1	1	12	-	2	1	32
Diploma	-	-	30	-	-	-	-	30
Amiri Diwan	6	1	-	15	-	5	2	29
Short	20	-	-	-	-	-	-	20
Amiri Academic Excellence	2	-	-	15	-	3	-	20
Distinction Performance	8	3	-	5	-	2	1	19
Qatar Inhabitants	5	5	3	2	-	-	1	16
Georgetown University	5	-	-	-	-	-	-	5
British-Columbian Islamic Society	2	-	-	-	-	-	-	2
Busan University	2	-	-	-	-	-	-	2
Rawdat-Alulum University-Kerala	2	-	-	-	-	-	-	2

Scholarships Type	Arts and Sciences	Business and Economics	Education	Engineering	Law	Pharmacy	Sharia and Islamic Studies	Grand Total
Jakarta University	2	-	-	-	-	-	-	2
Islamic Foundation Project	2	-	-	-	-	-	-	2
Kiev University	1	-	-	-	-	-	-	1
Hifz AlQuran Society	1	-	-	-	-	-	-	1
Council of Muftis	1	-	-	-	-	-	-	1
Board of Regents	-	-	1	-	-	-	-	1
Grand Total	227	67	83	128	12	28	40	585



Top 10 Bachelor Programs with Highest Number of Registered Students

(By Gender)

Top 10 Majors, Male	# of Students	Top 10 Majors, Female	# of Students
Law	304	Law	510
Civil Engineering	183	Mass Communication	312
Mechanical Engineering	172	Arabic Language	244
Electrical Engineering	129	Islamic Studies	224
Islamic Studies	94	International Affairs	217
Mass Communication	92	Dawa	198
Chemical Engineering	82	Sociology	197
Accounting	67	Social Work	186
Finance	62	English Literature & Linguistics	181
Dawa	58	Industrial and Systems Eng.	178



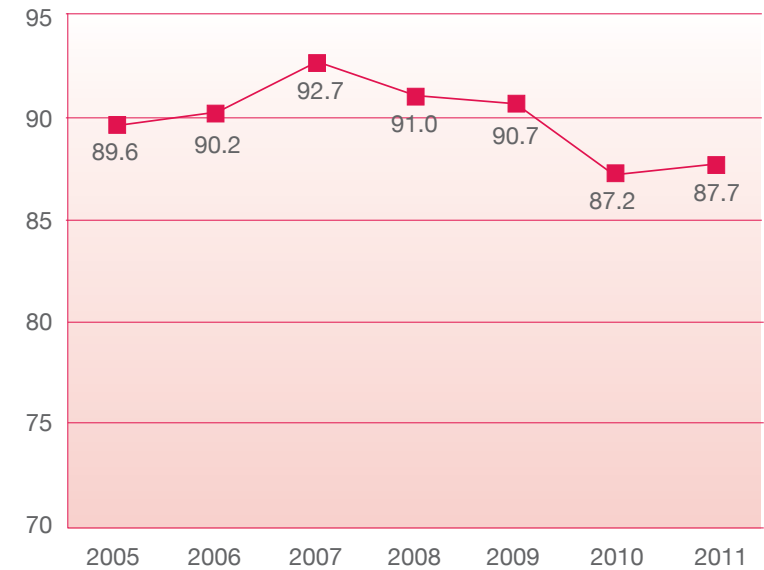


Graduation and Retention

Degree-Seeking First-Time Freshmen Undergraduate One-Year Retention Rate

Fall 2005 Cohort	89.6
Full Time	93.6
Part Time	73.9
Fall 2006 Cohort	90.2
Full Time	92.9
Part Time	79.3
Fall 2007 Cohort	92.7
Full Time	92.8
Part Time	87.0
Fall 2008 Cohort	91.0
Full Time	91.3
Part Time	50.0
Fall 2009 Cohort	90.7
Full Time	90.6
Part Time	100.0
Fall 2010 Cohort	87.2
Full Time	88.9
Part Time	61.9
Fall 2011 Cohort	87.7
Full Time	87.7

Fall to Fall Retention Rate (Full Time and Part Time)





Graduation Rates

Cohort of Degree-Seeking First-Time Freshmen Undergraduates	Within 4 years	Within 5 years	Within 6 years	Overall Graduates Percentage
Fall 2005 Cohort	17.1	50.4	56.7	61.3
Full Time	20.2	59.4	64.1	69.0
Part Time	5.2	14.8	27.8	31.3
Fall 2006 Cohort	23.0	52.2	61.4	
Full Time	26.6	59.8	69.2	
Part Time	8.3	21.4	29.7	
Fall 2007 Cohort	40.5	70.8		
Full Time	40.8	71.1		
Part Time	30.4	60.9		
Fall 2008 Cohort	42.3			
Full Time	42.5			
Part Time				

Tuition Fees by College and Level

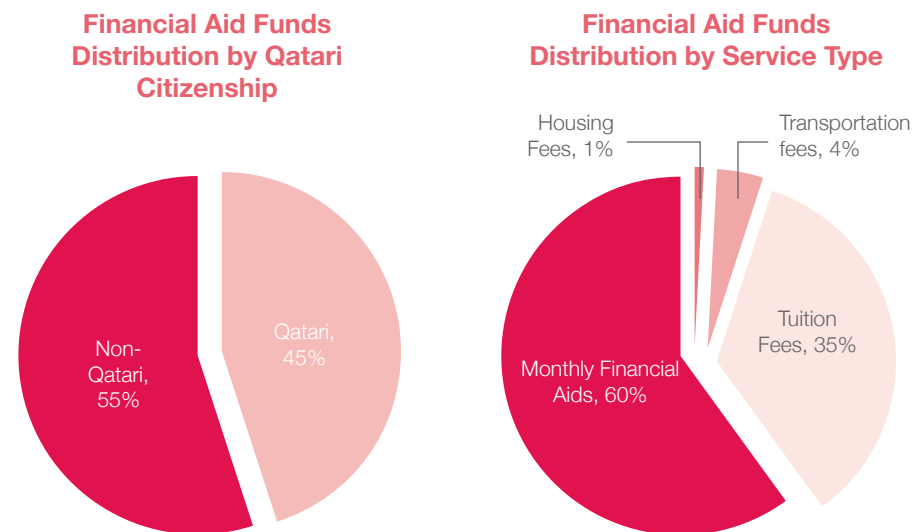
Tuition Fees for all non-national students admitted starting from Fall 2009 and onward

	Course Major	Tuition Fees Per Credit Hour
Undergraduate	Art	400
	Business and Economics	500
	Education	400
	Engineering	600
	Foundation Program	500
	Law	400
	Pharmacy	600
	Science	500
	Sharia and Islamic Studies	400
	Arabic for Non-Native Speakers Program	600
Doctorate Level	All Course Majors	1250
Master Level	All Course Majors	1250
Diploma Level	All Course Majors	1000

Student Financial Aid

	Qatari		Non-Qatari		Total
	M	F	M	F	
Fall 2012					
Monthly Financial Aids	24	257	126	205	612
Tuition Fees	-	-	196	382	578
Transportation fees	-	36	-	282	318
Housing Fees	-	-	5	14	19
Laptops	0	0	0	0	0
Desktop	-	-	5	2	7
Spring 2013					
Monthly Financial Aids	19	202	117	196	534
Tuition Fees	-	-	158	314	472
Transportation fees	-	32	-	302	334
Housing Fees	-	-	2	14	16
Laptops	-	0	0	0	0
Desktop (Donated)	-	-	10	6	16

The charts below show the share of the student financial aid between Qatari and non-Qatari, as well as the funds distribution by service type:



100% of eligible Qatari national students who applied for Financial Aid were awarded the aid.

Students Surveys AY 2012-2013

The Institutional Research (IR) Department conducts a number of institutional surveys that tap information on student engagement, retention management, learning outcomes, core curriculum, use of technology, satisfaction/perception on many other services and facilities provided by various units.

IR surveys	Description	Target Population	Population Size	Response Rate	Satisfaction/ Agreement Rate	Delivery Method	Cycles
Post-Graduate Satisfaction Survey	Designed to examine QU students' perception on the following areas: University experience; Quality of teaching and learning; QU administrative facilities and services; Their main motivations for enrolling in graduate programs; Their main reasons for choosing QU.	Postgraduate Students	373	46%	77%	Online	Spring 2012, Spring 2013
Senior Graduating Survey	To assess Student Learning Outcomes (SLOs) in the Core Curriculum, services offered by the Career Service Center, teaching, courses offered, grades distribution, use of technology, course availability, core curriculum/ general education and courses offered for major, relevance of the program and other QU services and facilities provided by various units.	Senior Students	655	54%	78%	Online	Spring 2009, Fall 2009, Spring 2010, Fall 2010, Spring 2011, Fall 2011, Spring 2012, Fall 2012, Spring 2013,
Student Housing Satisfaction Survey	The objective of the study was to capture student satisfaction data on the following areas: Housing Facilities; Student Housing Activities & Services; Meals & Catering Services; Transportation; Maintenance; Safety and Security; Supervisors/Management.	QU students living in University housing/ dorms	384	34%	77%	Online/ hardcopy	Spring 2011, Spring 2012, Spring 2013

In order to facilitate the assessment activities in all academic and non-academic units, the IR department provides services related to survey development, administration and/or data analysis. The following surveys have been conducted in collaboration with various units:

Academic and Non-Academic Unit Survey	Description	Target Population	Population Size	Response Rate	Satisfaction / Agreement Rate	Delivery Method	Cycles
Students Services Survey	Designed to examine QU students' perception of the services provided by the University.	All Students	11366	5.3%	80%	Online	Spring 2012, Spring 2013
Career Services Center Satisfaction Survey	The survey aims to assess the quality and effectiveness of Career Services Center (CSC) services and programs.	All Students	11366	1%*	85%	Online	Spring 2012, Spring 2013

* The Career Services Center survey was sent to all QU students, rather than only to CSC customers (working students), to increase awareness of their services.

**\$220
Million**

**Awarded for faculty research
projects including internal
and external funding.**



FACULTY AND STAFF

Faculty and Staff

Teaching Staff by Years of Work in QU, Qatari Citizenship and Gender

Faculty

(Excluding Foundation faculty and teaching assistants)

Years of Experience	Qatari		Non-Qatari		Total
	Male	Female	Male	Female	
<5	2	5	241	54	302
5 - 10	9	7	53	8	77
10.1 - 15	8	13	14	-	35
15.1 - 20	17	10	2	1	30
>20	50	47	1	-	98
Grand Total	86	82	311	63	542

Foundation

Years of Experience	Qatari	Non-Qatari		Total
	Female	Male	Female	
<5	-	50	36	86
5 - 10	-	21	16	37
10.1 - 15	1	9	7	17
15.1 - 20	-	3	2	5
Grand Total	1	83	61	145

Faculty by Rank

(Including Foundation faculty and excluding teaching assistants)

Rank	Number of Faculty	Percentage
Professor	98	14%
Associate Professor	135	20%
Assistant Professor	234	34%
Lecturer	220	32%
Total	687	100%

Teaching Staff by Nationality (Including Foundation faculty and excluding teaching assistants)

Region/Nationality	Number of Employees
Qatari	
Qatari	169
GCC Countries	
Saudi	3
Emirati	1
Omani	1
Arab, Non-GCC Countries	
Egyptian	61
Jordanian	31
Tunisian	25
Sudanese	16
Syrian	11
Algerian	10
Iraqi	10
Moroccan	10
Lebanese	9
Yemeni	5
Libyan	3

Region/Nationality	Number of Employees
Mauritanian	2
Palestinian	2
North America	
American	107
Canadian	45
Mexican	1
Europe	
British	43
Greek	6
French	3
Albanian	2
Bulgarian	2
Czech	2
German	2
Italian	2
Russian	2
Swiss	2
Bosnian	1

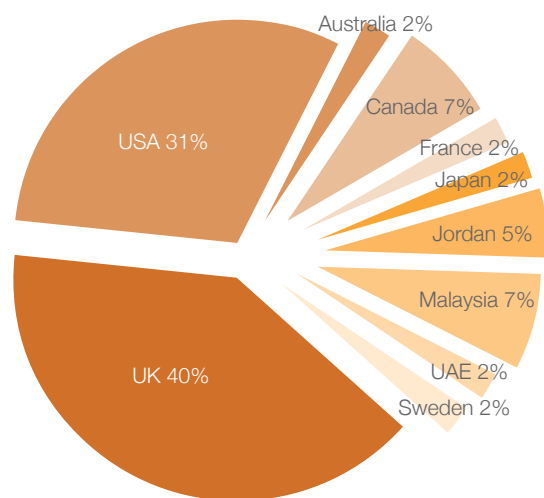
Region/Nationality	Number of Employees
Cypriot	1
Finnish	2
Hungarian	1
Irish	1
Kosovar	1
Dutch	1
Slovakian	1
Spanish	1
Swedish	1
Asia	
Indian	17
Turkish	13
Pakistani	7
Iranian	5
Malaysian	3
Sri Lankan	3
Japanese	2
Maldivian	2

Region/Nationality	Number of Employees
Filipino	2
South Korean	2
Bangladeshi	1
Chinese	1
Nepali	1
Oceania	
Australian	20
New Zealander	4
Africa	
Nigerian	1
Senegalese	1
Sierra Leonean	1
Zimbabwean	1
South America	
Brazilian	1
Grand Total	687

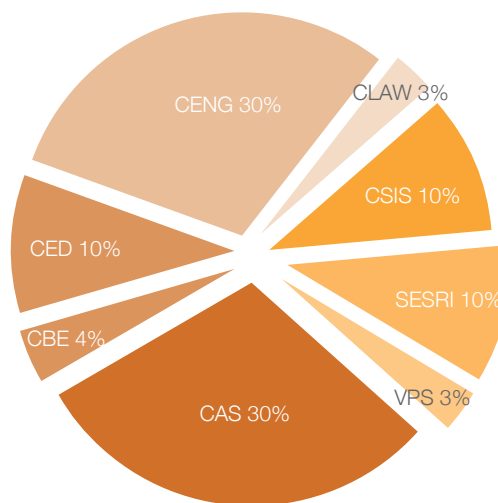
Graduate Studies Sponsorship

Qatar University offers around-the-world graduate studies opportunities to its Qatari faculty and teaching support staff. The total number of such scholarship recipients (Master's & PhDs) on October, 2011 was 45 (29 PhD's, 11 Master's and 5 Preparatory, 38 % males and 62 % females).

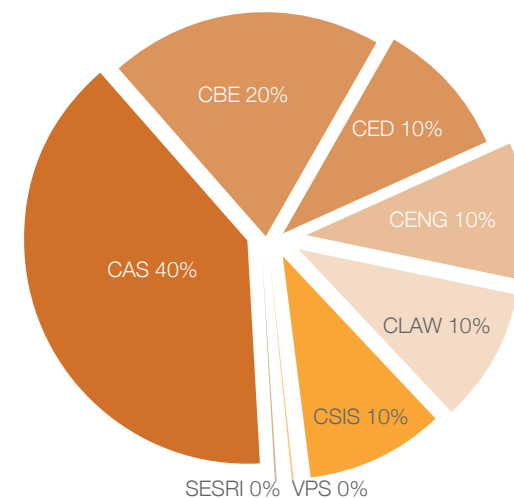
Overall by Country



College/Office PHD's



College/Office MA's



Staff Statistics

Nationality/Gender	Female	Male	Grand Total
Qatari	273	96	369
Non-Qatari	270	428	698
Grand Total	543	524	1067

Researchers Statistics

Nationality/Gender	Female	Male	Grand Total
Qatari	4	-	4
Non-Qatari	30	111	141
Grand Total	34	111	145



Faculty and Staff Surveys AY 2012-2013

The IR department conducts a number of institutional surveys that tap data/information of the faculty and staff on their perception/satisfaction with teaching, research, community service, communication, services and facilities provided by various entities of QU. IR also conducts a survey for new faculty to get information on the facilities and services provided by QU pre and post arrival. All surveys are geared towards improving the quality of facilities and services provided by QU.

IR surveys	Description	Target Population	Population Size	Response Rate	Satisfaction Rate	Delivery Method	Cycles
Faculty Satisfaction Survey	Designed to capture faculty's perception and satisfaction in teaching, research, communication, and participation. It also intended to capture information of the faculty's satisfaction with services provided by the University.	Faculty	765	49%	74%	Online	Spring 2008, Spring 2011, Spring 2013
New Faculty Satisfaction Survey	Conducted on all Qatar University newly recruited faculty members in a specific Academic Year. Such feedback enables Qatar University Administration, Colleges, Programs, Departments, and Human Resources to identify the points of concern in order to improve the existing process.	New Faculty	103	64%	86%	Online	Fall 2008, Fall 2009, Fall 2010, Fall 2011, Fall 2012,
Administrative Staff Satisfaction	Conducted on all administrators and employees working in colleges, departments and offices. It aims to capture data about their satisfaction on work environment, salary and benefits, professional development and opportunities, strategic plan and accreditation, various facilities, goals and objectives of the office and a number of other aspects.	QU Administrators & Administrative Staff	995	30%	71%	Online	Spring 2010, Spring 2012, Spring 2013
Employee Exit Survey	Designed to capture information on reasons for leaving QU, faculty's perception and satisfaction on number of issues and opinion while working at QU. Satisfaction with salary, benefits, job security, opportunity for career advancement, working conditions in the department, work challenges, teaching workload, communication and housing.	Exit employees (faculty and staff)	43	63%	70%	Online	Spring 2010, Spring 2011, Spring 2012, Spring 2013
Employee Housing Survey	Captures employee satisfaction in the areas of housing conditions, facilities in the compound, security and maintenance.	Faculty and staff benefiting from QU housing	664	48%	67%	Online	Spring 2011, Spring 2012, Spring 2013

The following are surveys that have been conducted in collaboration with various units:

Academic and Non-Academic Unit Survey	Description	Target Population	Population Size	Response Rate	Satisfaction / Agreement Rate	Delivery Method	Cycles
Customer Satisfaction Survey for Finance 2011-2012	The goal of this survey is to collect information about financial support provided by the Finance Department to its customers	Finance Department customers (faculty and staff)	1675	28%	65%	Online	Fall2011, Fall 2012, Fall 2013
Health Clinic Satisfaction Survey	The main objective of this survey is to measure the level of satisfaction regarding services provided by the QU Medical Clinic and to make sure of the quality of the healthcare services it provides.	All QU community	13126	1.5%*	85%	Online	Spring 2012, Spring 2013
Foundation Program Department of English Management Survey	The aim of the survey is to evaluate specific competencies of Foundation English faculty holding leadership positions.	Foundation Program English faculty	117	74%	88%	Online	Spring 2013
Foundation Program Department of Math Management Survey	The aim of the survey is to evaluate specific competencies of Foundation Math faculty holding leadership positions.	Foundation Program Math faculty	27	85%	93%	Online	Spring 2013
Survey Concerning Lenovo Laptop AY 2012-2013	This survey aims to find out what drives QU user satisfaction regarding the issued Lenovo laptops; this feedback is essential to improve the service.	Faculty and staff	1760	13 %	62%	Online	Spring 2013
Non-Academic Unit Review Survey	This short survey aims to measure the satisfaction of the units that were reviewed by the Non-Academic Unit Review Committee	Non-Academic Unit	13	69%	67%	Online	Spring 2013
Research Support Survey	The purpose of this survey is to collect information regarding the assistance and support provided by the Office of Academic Research (OAR) and the supporting units/departments at QU	Faculty	765	49%	69%	Online	Spring 2013

* The Health Clinic Satisfaction Survey was sent to all QU community, rather than only to the health clinic patients, to increase awareness of their services.

480

Current research projects.



GRADUATION

Graduation

Graduates by Academic Level, College, Major, Qatari Citizenship and Gender

# of Graduates	Qatari		Non-Qatari		Summary
	Male	Female	Male	Female	
Total	65	510	151	304	1,030
Undergraduate	64	490	132	275	961
Arts and Sciences	11	224	22	119	376
Arabic Language	-	50	-	26	76
Biology	-	1	-	-	1
Biomedical Sciences	-	4	-	14	18
Chemistry	-	2	4	3	9
English Language	-	26	-	9	35
English Literature&Linguistics	-	1	-	1	2
Environmental Sciences	1	2	1	3	7
Geography-Urban Planning	1	11	1	5	18
History	4	54	3	14	75
Human Nutrition	-	1	-	9	10
International Affairs	3	30	3	8	44
Mass Communication	2	23	10	23	58
Social Work	-	3	-	1	4
Sociology	-	13	-	1	14

# of Graduates	Qatari		Non-Qatari		Summary
	Male	Female	Male	Female	
Statistics	-	3	-	2	5
Business and Economics	27	125	42	46	240
Accounting	4	32	20	18	74
Finance	9	50	13	16	88
Management	12	27	6	7	52
Marketing	2	16	3	5	26
Education	-	20	1	5	26
Art Education	-	15	-	1	16
Physical Education	-	3	1	-	4
Primary Education	-	2	-	4	6
Engineering	16	51	65	67	199
Architectural Engineering	-	11	-	-	11
Chemical Engineering	4	2	8	14	28
Civil Engineering	3	-	25	-	28
Computer Engineering	-	12	-	21	33
Computer Science	1	5	2	17	25
Electrical Engineering	1	4	16	3	24
Industrial and Systems Eng.	-	17	-	12	29
Mechanical Engineering	7	-	14	-	21

# of Graduates	Qatari		Non-Qatari		Summary
	Male	Female	Male	Female	
Law	5	42	1	10	58
Law	5	42	1	10	58
Pharmacy	-	-	-	20	20
Pharmacy	-	-	-	20	20
Sharia and Islamic Studies	5	28	1	8	42
Dawa	-	6	-	1	7
Islamic Studies	-	2	-	3	5
Origin of Religion	2	11	-	3	16
Sharia	3	9	1	1	14
Masters	1	15	13	19	48
Arts and Sciences	-	3	-	1	4
Environmental Sciences	-	3	-	1	4
Business and Economics	-	9	6	7	22
Accounting	-	2	1	3	6
Business Administration	-	7	5	4	16

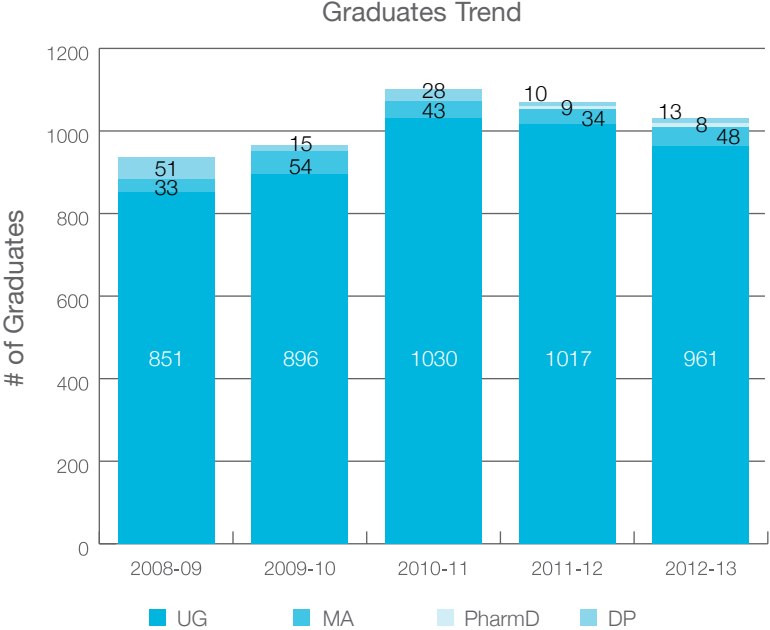
# of Graduates	Qatari		Non-Qatari		Summary
	Male	Female	Male	Female	
Education	-	3	3	8	14
Education Leadership	-	3	1	8	12
Special Education	-	-	2	-	2
Engineering	1	-	4	3	8
Computing	-	-	1	2	3
Engineering Management	1	-	3	-	4
Urban Planning and Design	-	-	-	1	1
PharmD	-	1	-	7	8
Pharmacy	-	1	-	7	8
Pharmacy	-	1	-	7	8
Diploma	-	4	6	3	13
Education	-	4	6	3	13
Primary Education	-	2	-	1	3
Secondary Education	-	2	3	2	7
Special Education	-	-	3	-	3



Graduates by Country/Region

Country Area Desc	# of Graduates	%
Qatar	575	55.8
GCC Countries	46	4.5
Arab, non-GCC Countries	316	30.7
Africa	10	1.0
Asia	66	6.4
Europe	7	0.7
North America	10	1.0
Overall - Summary	1,030	

Graduates Trend for the Past Five Years



Qatar University has succeeded in receiving the largest share of research grants from QNRF to both faculty and students.



ALUMNI



Alumni

Alumni Facts

The Qatar University Alumni Association (QUAA) was launched in late 2012 as a university-wide initiative. The association counts over 30,000 alumni within its ranks.

The QUAA conducts a number of activities each year to engage alumni in experiences that are positive for themselves, current students of QU, and Qatari society as a whole.

Her Highness Sheikha Moza Bint Nasser presides over the QUAA as Honorary Chairperson.

The Alumni Association comprises of chapters, of which there are five types. Chapters can be based on:

- Graduates' Intellectual Home: college/program
- Graduates' Era at QU: graduation year/decade
- Graduates' professional/career interests
- Graduates' geographical location/homeland
- Graduates' interests today beyond their careers

How to be A loyal Alumnus/Alumnae: Loyal Members of the Alumni Association are those who have shown a commitment to their alma mater by staying connected to Qatar University past their graduation. This is reflected in many ways including subscription to university publications, attendance at university events, as well as advocacy of university programs and activities. QU aims to recognize loyal alumni who go beyond their usual post-graduate relationship with the University, and strengthen relations with the University's best ambassadors.

QUAA in numbers:

- Total number of Loyal and Active Alumni: 7598
- 14 chapters have been formed since the launch of the QUAA in late 2012 .The total number of members in all chapters is 85
- The number of Alumni office activities held in AY 2012-2013 are 57 events and activities.
- The number of overall Alumni participants in those activities was over 3000 participants.

Alumni Surveys AY 2012-13

The IR department conducted three alumni surveys; one survey for undergraduate and 4 surveys for post-graduate students. These surveys are intended to tap data/information on occupational status, field of work, current position, extent of Career Services Center support in finding jobs, preparedness for job market, and frequency of contact with QU.

IR surveys	Description	Target Population	Population Size	Response Rate	Satisfaction Rate	Delivery Method	Cycles
Post Graduate Alumni Survey (MBA)	Measure the following areas: Overall employment rate, employment rate by program, sector, gender, and nationality, contact between QU alumni office and alumni, and the impact/usefulness of QU degree in promotion and salary.	Postgraduate Alumni, College of Business (MBA)	42	40%	83%	Online	Spring 2012, Spring 2013
Post Graduate Alumni Survey (Education)	Measure the following areas: Overall employment rate , employment rate by program, sector, gender, and nationality, contact between QU alumni office and alumni, and the impact/usefulness of QU degree in promotion and salary.	Postgraduate Alumni, College of Education (Master & Diploma)	57	56%	82%	Online	Spring 2012, Spring 2013
Post Graduate Alumni Survey (Pharmacy)	Measure the following areas: Overall employment rate , employment rate by program, sector, gender, and nationality, contact between QU alumni office and alumni, and the impact/usefulness of QU degree in promotion and salary.	Postgraduate Alumni, College of Pharmacy (Doctor)	9	67%	96%	Online	Spring 2013
Post Graduate Alumni Survey (Engineering)	Measure the following areas: Overall employment rate , employment rate by program, sector, gender, and nationality, contact between QU alumni office and alumni, and the impact/usefulness of QU degree in promotion and salary.	Postgraduate Alumni, College of Engineering (Master)	10	90%	79%	Online	Spring 2013
Alumni Survey for Undergraduate	Intended to tap data on a number of issues regarding alumni employment status, relationship between the area of study and current work, impact of the degree program in obtaining job and performing at work field, employer perception about QU alumni who are currently employed at work, contact between QU and Alumni.	Alumni	2096	38%	86%	Telephone Survey	Fall 2009, Spring 2010 & Fall 2010, Spring 2011, Spring 2013

Similarly, the following surveys were conducted for academic and administrative units to facilitate their assessment activities and to assess community perception or satisfaction according to the purpose of these surveys.

Academic and Non-Academic Unit Survey	Description	Target Population	Reliability	Population Size	Response Rate	Satisfaction/Agreement Rate	Delivery Method	Cycle
Employability Skills Survey for the Continuing Education Office	The Employability Skills Survey 2013 was conducted to better understand the training needs in Qatar	managers and employees in several employment sectors	0.97	-	37 respondents	-	Online	Spring 2013
Customer Satisfaction/ Feedback Survey on the services provided by Office of VP for Research	The purpose of the survey is to assess the quality of services provided by accredited labs in ESC, CAM & CLU & to comply with ISO/IEC 17025 accreditation requirements	VP for Research customers	0.94	71	44%	92%	Online	Spring 2013





1st

**Qatar Biofuels Projects
Research to produce
affordable, sustainable biofuels
for the aviation industry.**

**By 2011, Qatar University
had a citation impact of 1.05,
which is higher than the
citation impact of the Middle
East overall. This represents
an overall increase in the
quality of research produced
by Qatar University (Output
growth and impact of
Qatar University Scientific
Research, Elsevier April 2013)**



RESEARCH CENTERS

Research Centers Academic Research

Qatar University encourages its faculty to be actively involved in research activities. One of Qatar University's strategic aims is to develop and enhance research that acknowledges standards of excellence. The table below summarizes the extent of faculty involvement in research during AY 2012-13 (figures below exclude Foundation faculty).

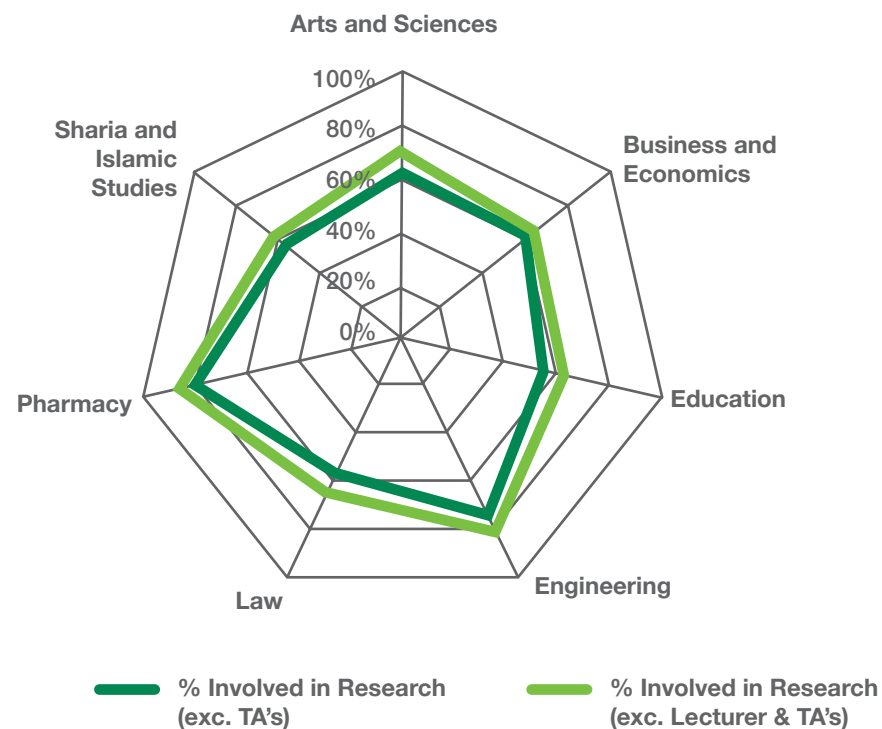
College	Total Full-time Faculty excluding TA's	Full-time Faculty Involved in Research (as per FPRDS)	% Full-time Faculty Involved in Research*	% Full-time Faculty Involved in Research (exc. Lecturers)*
Arts and Sciences	231	145	63%	70%
Business and Economics	58	36	62%	65%
Education	44	24	55%	63%
Engineering	124	93	75%	82%
Law	28	16	57%	65%
Pharmacy	17	14	82%	88%
Sharia and Islamic Studies	40	23	58%	61%
Total	542	351	65%	71%

*Excluding "Creatives"

Moreover, the Office of Academic Research regulates the process of submission for internal grants and serves as the institutional liaison with external agencies and organizations on all research administration and contract matters.

Internal grants are classified into four categories:

- Start-Up Grant
- Student Grant
- University Grant
- Summer Grant



External Grants

NPRP Grants

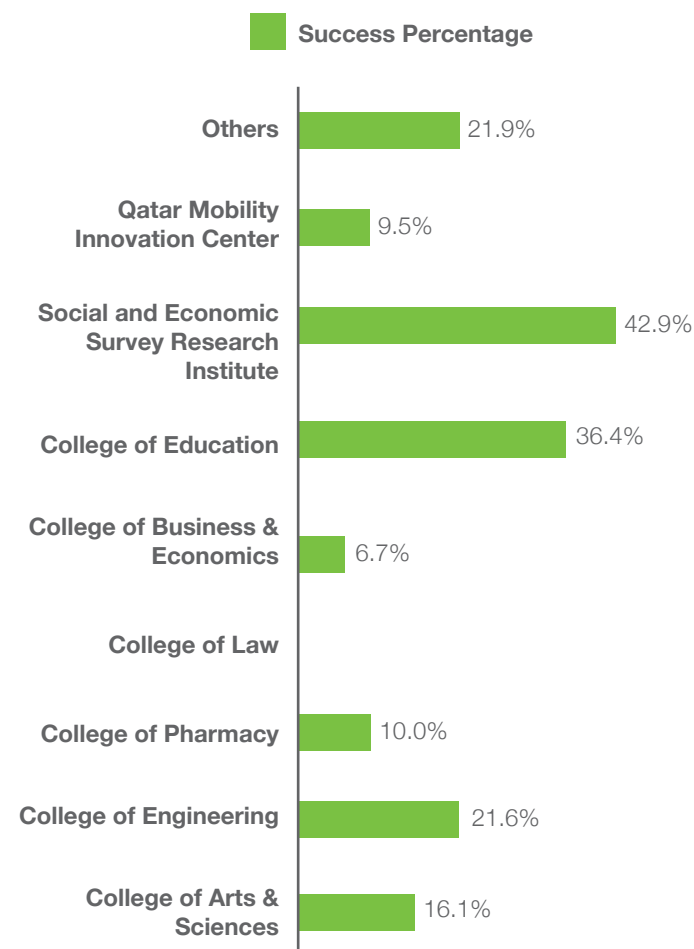
The National Priorities Research Program (NPRP) is the flagship funding program of the Qatar National Research Fund (QNRF). Grant size ranges from US \$20,000 up to US \$350,000 per funded year, and up to three years.

NPRP 6th cycle

QU researchers obtained 63 awarded proposals out of a total of 322 submitted; which translates to about 20% of the total awarded proposals; “the highest among awarded institutes”.

NPRP success percentage per college

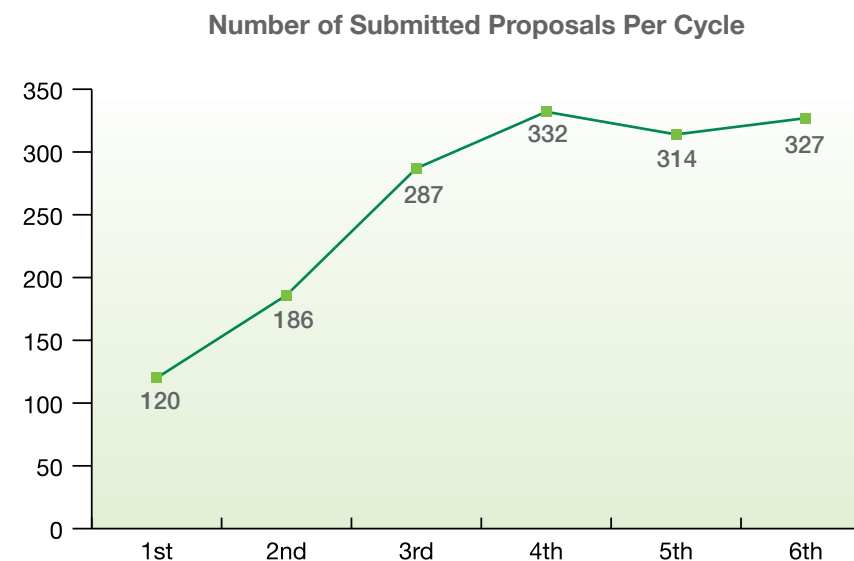
College	Number of Submitted Proposals/Passed The Prescreening	Number of Awarded Proposals	Success Percentage
Arts and Sciences	62	10	16.12%
Engineering	162	35	21.60%
Pharmacy	10	1	10.00%
Law	1	0	0.0%
Business and Economics	15	1	6.66%
Education	11	4	36.36%
Social and Economic Survey Research Institute	7	3	42.85%
Qatar Mobility Innovations Center	21	2	9.52%
Others	32	7	21.87%
Total	322	63	19.6%



NPRP success percentage per research area

Research Area	Number of Submitted Proposals/Passed The Prescreening	Number of Awarded Proposals	Success Percentage
Natural Sciences	61	13	21.31%
Engineering and Technology	179	35	19.55%
Medical and Health Sciences	27	3	11.11%
Agricultural Sciences	3	2	66.66%
Social Sciences	44	9	20.45%
Humanities	8	1	12.50%
Total	322	63	19.6%

6 Cycles Trend of NPRP Submissions (before screening)



NPRP success percentage per research type

Research Type	Number of Submitted Proposals/Passed The Prescreening	Number of Awarded Proposals	Success Percentage
Applied research	251	43	17.13%
Basic research	71	20	28.17%
Total	322	63	19.6%



UREP Grants

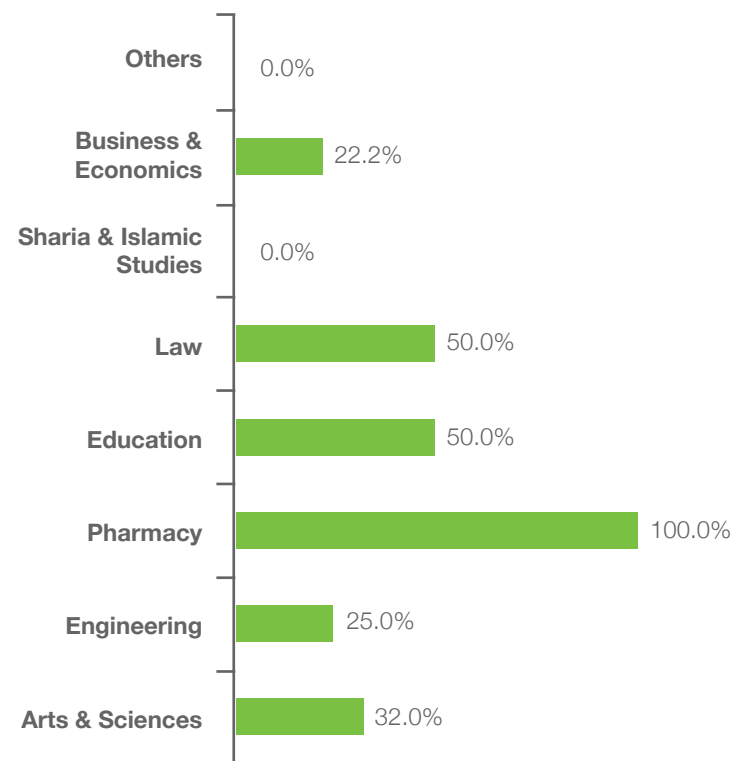
This program supports students engaged in team- or site-based projects under the auspices of faculty members or professional researchers. Under this program, the QNRF solicits proposals from Qatar's academic institutions.

UREP 13th cycle

Qatar University has been awarded 21 out of 91 submitted proposals translating into a "success percentage" of 31.9%.

Success percentage per college

College	Number of Submitted Proposals	Number of Awarded Proposals	Success Percentage
Arts and Sciences	25	8	32.0%
Engineering	40	10	25.0%
Pharmacy	5	5	100%
Education	4	2	50.0%
Law	4	2	50.0%
Sharia and Islamic Studies	1	0	0.0%
Business and Economics	9	2	22.2%
Others	3	0	0.0%
Total	91	29	31.9%







Research Centers

As a premier national institution, QU continuously invests and participates in studies which further science and society. As both a leader in emerging gas technologies and an environmentally-conscious institution, QU's autonomous research units strive to make an impact on a global scale.

Center for Advanced Materials

The Center for Advanced Materials provides the opportunity for faculty members and students to interact with the industry and actively participate in various projects related to the four essential elements of materials science and engineering: processing/synthesis, structure, properties and applications.

Researches & Projects AY 2012-13	
<i>Research</i>	
Number of researchers	21
Number of researches	23
Subjects of focus	Concentrated on applied research in the areas of Nanotechnology, Composites, Corrosion, Construction materials, life cycle assessment and others.
<i>Projects and interaction with the industry</i>	
Collaborators	QF - QSTP - Qatar industry (i.e. QP, QATALUM, QAPCO, Qatar Steel) and international universities around the world.
Number of published papers	30
Industrial/ community training workshop/consultation/services	11

Gas Processing Center

The Gas Processing Center (GPC) focuses on enhancing the educational experience of engineering students at QU and addressing the challenges facing the gas industry. In addition to its research activities, the center offers periodic technical training programs, information products, and organizes a biannual technical symposium related to gas processing and associated technologies.

During the AY 2012/2013, the center organized the following workshops (attendance limited to 30 QU faculty members, staff, students and/or representatives of the industry):

1. Carbon Capture and Storage Horizons and Challenges - 10&11 Oct 2012
2. Oil and Gas Asset Integrity Management - 10 Dec 2012
3. Management of Asset Integrity through 3D Modeling - 16th Jan 2013
4. Oil and Gas Asset Integrity Management - 16th May 2013

SESRI

The Social and Economic Survey Research Institute (SESRI) is a recent initiative of Qatar University established at the end of 2008 to conduct high quality survey research on issues related to the development and welfare of Qatari society, including the social, economic, and cultural areas.

In addition to survey data collection, capacity building in survey research methodology is a key component of SESRI's mandate. SESRI promotes the latest techniques in survey research methodology through training programs, forums and international conferences. Its training workshops cater for various target groups, including students, faculty members, researchers from governmental and non-governmental organizations and various professionals who use survey data. SESRI forums and international conferences (held biennially) bring forth world renowned experts from the field of survey research to present their latest findings on specific topics and themes.

Activities during AY 2012-13

Number of SESRI initiated surveys	4
Number of externally initiated surveys	6
Number of awarded NPRP/QNRF grants 2012-2013	NPRP (6th cycle): 3 UREP (13th Cycle): 1
	NPRP (active awards from previous cycles): 3
Number of trainings and workshops offered by SESRI	A total of 5 trainings: 1. Introduction to SPSS 2. Introduction to STATA 3. Introduction to Data Analysis 4. <i>What Every Journalist Should Know about Public Opinion Polls</i> (communications workshop) 5. Introduction to Survey Sampling
Number of training attendees	123
International conference	<i>The Rise in Public Engagement: the Region and the World</i> March 18th- 20th, 2013

Environmental Studies Center

The Environmental Studies Center (ESC) conducts environmental sustainability and environmental impact assessment studies related to many major developments in the country.

The ESC has completed 7 projects during 2012-2013 as listed below:

<i>Project</i>	<i>Company/Consultant</i>
Analytical Test on Industrial Waste Water	ExxonMobil Research Qatar Ltd.
Assessment of the Impact of Sodium Bi Sulphite and other Dechlorination Chemicals on Mesaieed's Marine Environment	Qatar Fertilizer Company
Monitoring of Al-Besheriya Island and QAFCO's Artificial Reef Balls and Submission of Relevant Documents and Recommendations	Qatar Fertilizer Company
Post-Entry Environmental Survey at Ras Laffan	J.Ray McDemott Middle East, Inc.
Port Basin and Breakwater Construction: Ecotoxicological Assessment for New Port Project	China Harbour Engineering Company Ltd.



45%

Of the total funding under National Priorities Research Program (NPRP) is regularly awarded to QU.



COMMUNITY SERVICES AND OUTREACH



Community Services and Outreach

Student Projects

Al BairaQ project

As part of future growth and in line with our objective of supporting Qatar's devotion to develop its knowledge-based economy, enrich its human capital, and improve its competitiveness through innovation, entrepreneurship, and applied research, the Center for Advanced Materials launched "Al-BairaQ". Al-BairaQ encourages high school students to acquire research values, skills, and ethics; as well as develop self-reliance, self-confidence, and expanded visions of their own roles in the scientific community.

Number of participating schools	20
Number of participating students	781
Number of courses/workshop delivered	Four main tracks: "Solving Problems", "I am a Researcher", "I am Discovering Materials", "Science In Sports", Two cycles per track (Fall and Spring)
Topics	Under STEM: Science, Technology, Engineering and Math. More than 20 different topics in Concrete, Polymers, Nano-technology, Bioscience, Composites, Environmental Catalysis, Food Packaging, Biodegradable Materials, Smart Sensors, Biosensors, Nano-scale drug, and other areas.
Program sponsorship	The program is sponsored by prestigious organizations: <ul style="list-style-type: none"> • UNESCO – Doha Office (Partner) (http://www.unesco.org/en/doha/) • RasGas (Platinum Sponsor) • Shell (Silver Sponsor) • Qatar Petroleum (Sponsor)

Gasna Contest

The Gas Processing Center created a national competition to increase societal awareness regarding the country's abundant and valuable natural resources, and to help the children of Qatar take ownership of Qatar's future.

Gasna Statistics for 2012/2013

Number of Contacted Schools	150
Number of Registered Schools	57
Number of Schools attended the Open Day	50
Number of Participating Schools	38
Number of Projects received	50
Number of Projects in each Category	KG: 2
	1st – 3rd Grade: 6
	4th – 6th Grade: 11
	7th – 9th Grade: 14
	10th – 12th Grade: 17
Total Number of Visits made to Schools	19
Number of Visits made to Schools by Sponsors	Shell: 2 ExxonMobil: 1 QatarGas: 1

Life is Engineering

The Life is Engineering Project (LIEP) is an initiative of the College of Engineering that aims to promote the field of engineering to high school students with the view to attract a large number of Qatari students to the scientific and engineering disciplines through hands-on interactive approaches to scientific theories and engineering applications.

In the AY 2012-13, 16 teams from independent schools (each team comprising 8 Qatari males and a supervisor) were invited to a series of 5 workshops on assembling a racing car. Following the fifth workshop, 6 teams were selected to compete in a race at Lusail International Circuit on 18th May 2013, in which students displayed the performance and speed of the cars they had assembled.



Continuing Professional Pharmacy Development (CPPD) Program

The Continuing Professional Pharmacy Development Program (CPPD) of the College of Pharmacy at Qatar University aims at the continuing professional development of pharmacists in Qatar. The CPPD Program achieves its mandate, in part, through the provision of educational programs that improve and expand the competency of pharmacy professionals, researchers, scientists and allied professionals involved in pharmacy practice. On 13 June 2013, the Supreme Council of Health's Qatar Council for Health Practitioners accreditation officially declared the CPPD program of the College of Pharmacy accredited as a provider for continuous medical education and professional development for health practitioners. This makes the CPPD program the first and solely accredited continuous professional pharmacy or medical development provider in Qatar.

During the AY 2012-13, the CPPD held 9 events with a number of attendees varying between 120 and 26, as summarized in the below table:

Event Title	Registered	Attended	Female	Hospital Pharmacists	PHC	Community	Others
Introduction and Overview of 2012AY Continuing Professional Development Plans	125	43	23	4	7	11	15
Responding to symptoms	106	35	16	10	11	7	3
Putting evidence into practice	102	39	19	10	12	6	11
Health promotion by pharmacists	60	35	17	6	18	11	1
Pharmaceutical care for geriatrics	85	26	15	8	30	10	-
Development of a medication management service: Professional and structural requirements	58	35	20	8	6	11	28
Care planning	120	61	32	17	4	18	3
Third annual student research forum	92	120*	84	36	0	20	64
Counseling and consulting	70	33	21	3	5	18	6

*This number includes students





Figures 1 and 2 provide data related to how relevant did the attending pharmacists find the CPPD activities to their practice, and whether attending the CPPD led to change in the way they practice, respectively (Source: Khair N. CPPD Survey-2013. May 2013).

Fig. 1. Relevance of the CPPD activities

In general, how RELEVANT have you found the CPPD activities that had been delivered so far to your professional needs?

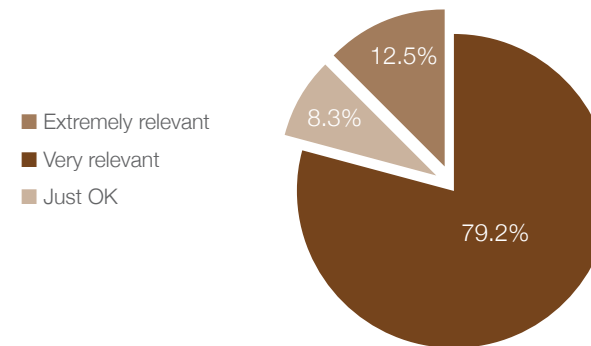
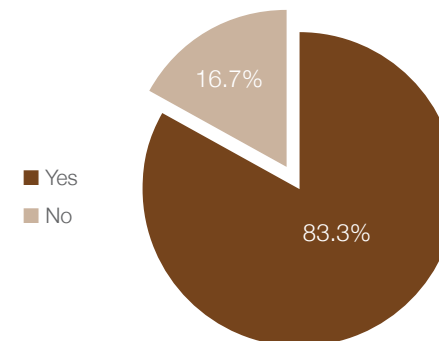


Fig. 2. Impact of attending the CPPD activities on practice (self-perception)

Has attending the College of Pharmacy's CPPD led to change in the way you practice?



Faculty Participation in Community Service Activities

Faculty are encouraged to participate in community service activities. The table below summarizes the extent of all college faculty (instructional and non-instructional) participation in committees outside Qatar University during the AY 2012-13, which is one of the aspects of faculty involvement in community service activities.

Arts and Sciences	35%
Business and Economics	17%
Education	41%
Engineering	36%
Law	29%
Pharmacy	53%
Sharia and Islamic Studies	33%

Foundation Program: Community Service

Data collected by the Foundation Program indicates that 75 faculty members had been involved in volunteering activities, while 76 faculty members had been involved in community service committees.

National Center for Educator Development

The National Center for Educator Development (NCED) was established through the College of Education in 2010, to expand professional development services provided to educators in Qatar. The NCED focuses primarily on providing high quality, research-based and internationally-accepted professional development programs, services, and products.

Three main programs are offered by NCED to achieve its mission:

School Based Support Program: Six independent schools have participated in this program with a total of (350) schoolteachers and principals. This program aims at improving the performance of the participating schools through offering them practical, high quality, and variety of school based professional learning activities.

Partnership programs: The NCED has four partnership programs to date: The TAMAM Project in collaboration with Arab Thought Foundation and American University in Beirut, Qatar University–Exxon Mobil Teachers Academy in collaboration with Exxon Mobil Company, Assistive Technology program in collaboration with MADA (Assistive Technology Center), and Learning of Students with Special needs & Behavior Modification Projects. In collaboration with Awsaj Academy.

Extended Training Program: This program includes a series of workshops offered over several weeks, as follows:

Program	Workshop	No. of Participants
Motivation and Classroom Practices	Multiple intelligence in the classroom	730
	Models in Classroom Management	
	Address the deficit syndrome motivation	
	Behavior Management	
Bilingual Teaching of Math and Science	Introduction to the Challenge of Bilingual Teaching and Learning	217
	Teaching science for bilingual competence	
	Teaching mathematics for bilingual competence	

Mentoring and Supervision Program for Middle School Leaders	Mentoring & supervision skills	344
	Planning Skills	
	Teaching Strategies	
	Classroom Evaluation Methods	
Special Education Program-Level 1	Introduction in Learning difficulties	208
	Introduction to mental disability and case study	
	EBD & classroom management	
	Introduction to learning disability (case study)	
	Strategies for teaching students with learning disability	
Special Education Program-Level 2	Strategies for teaching students with intellectual disabilities	127
	Cognitive behavioral therapy for \ students with attention deficit disorders and hyperactivity (ADHD) in classroom	
	Strategies to develop the skills of reading, writing and arithmetic for students with learning difficulties in secondary and property level	
	Behavior Analysis (ABA)	
Special Education	Meeting the Needs of Students with Low Incidence Disabilities	263
	Using Cognitive Behavior Therapy to Modify Behavior (Part 1)	
	Using Cognitive Behavior Therapy to Modify Behavior (Part 2)	

Action Research	Cycle of Action Research	93
	Common Characteristics of Action Research	
	Steps in Action Research Process	
Physical Education	Exercise, Fitness and Health of young people: what's the problem?	159
	The assessment and monitoring of health-related fitness components: the tools and techniques used in monitoring young people's physical activity	
	Current approaches for introducing health enhancing physical activity in schools	
Early Childhood Program	Creating an Enthusiastic Classroom: Inspiring Children's Competence	312
	Using Creative Thinking Skills to Promote Creativity in Young Children	
	Activating Learning Corners in the Classrooms	
	Methods of examining child's growth and development in Early Childhood Stage	
ICT Special Education	Introduction to Assistive Technology in Education	86
	Introduction to Assistive Technology in Education (Part 2)	
	Creating Classroom Resources for the Student with a Disability	
Total		650



The Early Childhood Center

The Early Childhood Center aims to provide a broad and balanced curriculum which enables children to develop positive values and attitudes, skills, and knowledge, within a co-operative and supportive environment from the age of 3yrs.

The Early Childhood Center at Qatar University was established in 2007 to meet the needs of the local community in the following three inter-related areas:

1. Promoting best practices in teaching and learning using new technologies to support and enrich early learning.
2. Training early childhood educators and professionals to meet international standards.
3. Initiating research projects, such as action research to better inform pedagogical practices at the Center.

Information about the ECC	Number
Number of enrolled children	52 Children
Director Teachers	1 5 Teachers
Assistant teachers	2 AT
Educational Units: Welcome; I am who I am; My Home is my Identity; Environment; My Book is my Friend.	5 Units
Outdoor Activities & Trips : Pizza express; Islamic Art Museum; Porsche Showroom; Camping in QU Campus; Camping in Dahl Al-Hamam Garden; Green Tree Garden Market; Visit to science college; 2nd Health Fair in QU; Library in QU; Imam Mohamad Abdul Wahab Mosque; New Doha Printers.	12 activities
Events of Early Childhood Centre : Teachers Day; World Food Day; International Children's Day; Disability Day; Qatar International Day; Alumni Reunion; End of Unit Celebration(Unit 3); Mobile Library; End of Unit Celebration (unit 4), World Deaf Day; Graduation Ceremony/Party.	11 Events
Workshops ; Yoga in Early Childhood; Arabic Handwriting; Developing thinking and creation for children.	3 Workshops
Number of children participating in events and festivals of Early Childhood Center	120 Participants
Field experience & training of BED program	37 CED students
Volunteer for community services	57 QU Students



Qatar University has established a Scholars database of expertise at the university where the profiles and publications of all the scholars at Qatar University are accessible to the public. (QU Scholars website)



EVENTS

Events

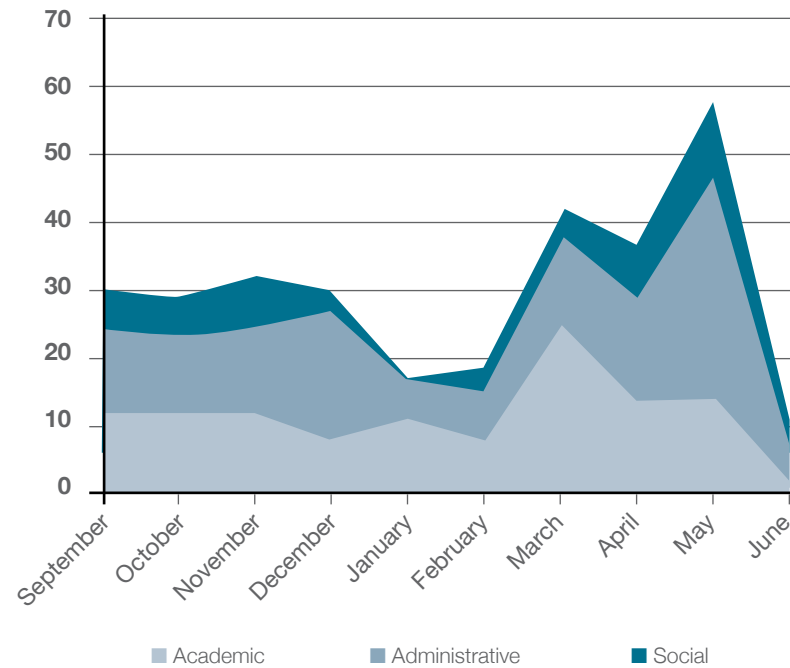
Qatar University Events

Qatar University has organized and held a large number of events over the 2012-2013 academic year. The table below shows a summary of events organized by QU (304 events in comparison with 201 events in AY 2011-2012) classified as internal/external as well as social/administrative/academic, according to data collected by the External Relations department.

QU Events 2012-2013											
Event Category/Month	September	October	November	December	January	February	March	April	May	June	Grand Total
Academic	12	12	12	8	11	8	25	14	14	2	118
External	2	0	0	0	0	0	1	0	0	0	3
External/Internal	0	2	5	4	7	7	10	6	1	1	43
Internal	10	10	7	4	4	1	14	8	13	1	72
Administrative	12	11	12	19	6	7	13	15	33	5	133
External	2	0	0	0	1	0	0	1	1	0	5
External/Internal	4	5	6	8	2	2	8	11	9	1	56
Internal	6	6	6	11	3	5	5	3	23	4	72
Social	6	6	8	3	0	3	4	8	11	4	53
External	0	1	0	0	0	0	0	1	0	0	2
External/Internal	1	3	5	1	0	3	2	5	2	3	25
Internal	5	2	3	2	0	0	2	2	9	1	26
Grand Total	30	29	32	30	17	18	42	37	58	11	304

Events are categorized as follows:

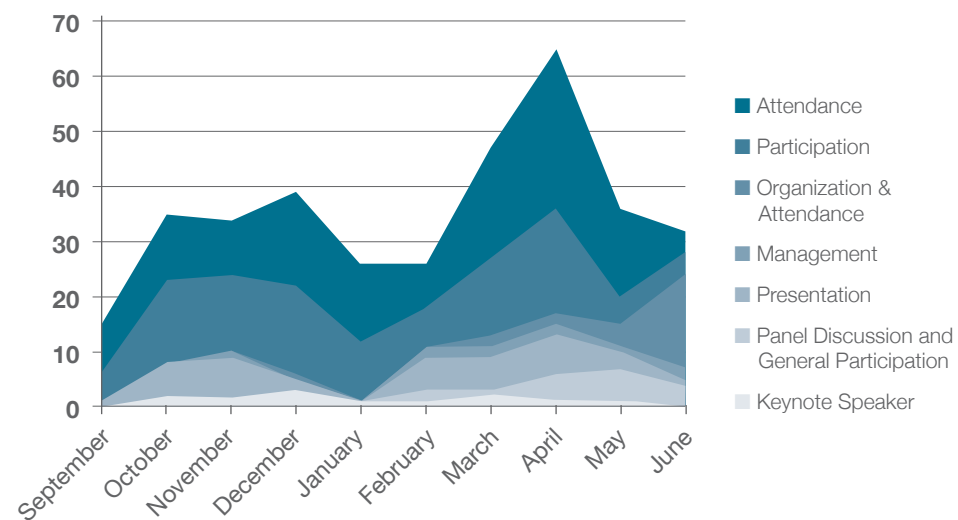
- **Academic events:** events directly related to university academic life, i.e. events connected to study progress such as scientific conferences, student orientations, lectures, seminars and workshops.
- **Administrative events:** events pertaining to the administration of the university and staff-related issues, such as signing memorandums of understanding, faculty orientations, staff meetings, and press conferences.
- **Social events:** events concerning mostly community-related issues and activities which are not related to the academic process, such as open days, student activities (sport days, National Day, Cultural Village, honoring ceremonies, photography competitions), or community services (blood donation campaign, alumni events).



Participation in External Events

Qatar University has also participated in several external events over the 2012-2013 academic year. The table below shows a summary of QU community members participation in external events (355 events in comparison with 132 events in AY 2011-2012) categorized by type of participation, according to the data collected by the External Relations department.

Type of Participation	September	October	November	December	January	February	March	April	May	June	Total
Organization & Attendance	0	0	0	1	0	0	2	2	4	17	26
Management	0	0	1	0	0	2	2	2	1	2	10
Keynote Speaker	0	2	2	3	1	1	2	1	1	0	13
Presentation	1	6	7	2	0	6	6	7	3	1	39
Panel Discussion and General Participation	0	0	0	0	0	2	1	5	6	4	18
Participation	5	15	14	16	11	7	14	19	5	4	110
Attendance	9	12	10	17	14	8	20	29	16	4	139
Grand Total	15	35	34	39	26	26	47	65	36	32	355





10

Interdisciplinary research centers with world-class facilities.



PHYSICAL FACILITIES

Physical Facilities

The Business Operation Department provides a suitable environment for students, teachers and employees by maintaining existing buildings and adding new constructions as needed.

Buildings

New Library Building

Located in the men's section, the new library building has been in use since January 2012. The Building is used for learning and reading functions, and houses reading halls, study rooms, meeting rooms, an auditorium, display area, stores, some food services and security rooms.

New College of Business / College of Law Building

Located in the men's section, the College of business and Economics – College of law Building has been in use since 2011. The building is used for learning functions and some students activities, and houses lecture halls, seminar rooms, computer labs, meeting rooms, faculty staff offices, stores, some food services and security rooms.

New Research Complex

The New Research Complex is located in the men's section. It is still under construction, and expected to be finished by 2013. The new Research complex will be used for learning, testing, and administrative functions. It has wing divisions for 7 research units and a main administration unit. It houses lecture rooms, auditorium, labs, meeting rooms, staff offices, storage rooms, some food services and security rooms.

New Central Service Unit (CSU)

Located in the men's section, the new CSU Building has been in use since 2011. It is used for technical and service functions, and houses chillers, transformers, and other control service equipment, machines and security rooms.

Food Court

The Food Court is located in the women's section, in front of the College of Engineering Building. It has been in operation since March 2009, and is used as a location for fast food services, as well as for light entertainment activity. It houses different types of fast food facilities, soft drinks, coffee shop and cafeterias. It has a bookstore, bank, Internet Café and some administrative offices.

Women's College of Engineering Building

Located in the women's section behind the Women's Activities Building, the women's College of Engineering building has been in use since January 2009. The facility is utilized for learning functions, and some student activities. It houses lecture rooms, labs, auditoriums, faculty members offices, meeting rooms, and security rooms.

Men's College of Engineering Building

Located in the men's section in the middle of Qatar University Campus, the men's College of Engineering building has been operational since 1984. It is composed of a series of joined structures, and starts from section "F" through section "J". It is used for learning functions and some students' activities. It houses lecture rooms, labs, auditoriums, faculty member offices, meeting rooms and some food services.

Men's Engineering Workshop Building

Located in the men's section at the end of the men's

College of Engineering building. It has been in use since 1984. It is used for learning and facility functions. It houses offices.

Men's Engineering Annex Building

Located in the men's section beside the men's College of Engineering building, and has been in use since 1984. It is used for learning and administrative functions. It houses computer labs and offices.

Men's College of Arts and Sciences Building

Located at the men's section in the middle of Qatar University Campus, the men's College of Arts and Sciences building has been in use since 1984. It starts from section "A" through section "E", and is used for learning functions and some student's activities. It houses lecture rooms, labs, auditoriums, faculty member offices, meeting rooms and some food services.

Women's College of Arts and Sciences Building

Located at the women's section, the women's College of Arts and Sciences building has been in use since 2000. It is divided into 6 sections (starting from section "A" through section "F") and each section serves a branch under the college. It is used for learning functions and some students activities. It houses lecture rooms, labs, faculty members offices, meeting rooms and some food services.

Business Operations Department (BOD)

Located in the women's section near the men's College of Engineering building. It has been in use since 1984, and operates most of the systems in the University, it is therefore used for administrative and technical functions. It houses staff offices, labs, port cabins, meeting rooms, workshop, and security rooms.

Information Technology Services (ITS)

Located in the men's section besides the Administration building, the ITS building has been in use since 1986. It is committed to collaborating with the Qatar University community to provide excellent information products and services, and enables the University to uphold its high standards in teaching, learning and outreach. It delivers world-class IT services to enable Qatar University to be a model national university that offers a high quality, learning-centered education. It houses staff offices and meeting rooms.

Administration Building

The Administration Building is located in the men's section on the main road. It has been in use since 1984 for administrative functions and instructions. It houses offices and meeting rooms.

Educational Technology Building

Located in the men's section, in front of the College of Arts and Sciences (Men). It has been in use since 1984. It is used for learning functions, and some students activities. It houses lecture rooms, labs, faculty members offices, meeting rooms and some food services.

Main Men's Building

The Main Men's Building is located in the men's section beside the men's College of Arts and Sciences building. It has been in use since 198 for learning functions, and some students activities. It houses lecture rooms, labs, faculty member offices, meeting rooms and some food services.

Main Women's Building

Located in the women's section besides the men's College of Arts and Sciences building, the Main Women's Building has been in use since 1984. It is used for learning

functions, and some student activities. It houses lecture rooms, labs, faculty member offices, meeting rooms, some food services.

Men's Foundation Building

Located in the men's section at the north end of the campus on the main road, the Men's Foundation Building has been in use since 2004. It is used for learning and administrative functions, and some students activities. It houses lecture rooms, labs, faculty member offices, meeting rooms and some food services.

Women's Foundation Building

Located in the women's section to the north and most of the west part of the campus, the Women's Foundation Building has been in use since 2004. It is used for learning functions, and some students activities. It houses lecture rooms, labs, faculty member offices, meeting rooms and some food services.

Men's College of Business and Economics Building

Located at the men's section on the main road just before the Foundation Building, the Men's College of Business and Economics Building has been in use since 2001. It is used for learning functions and some students activities, and houses lecture rooms, labs, faculty member offices, meeting rooms and some food services.

College of Sharia and Islamic Studies/ College of Law Building

Located in the women's section, the building has been in use since 2001. It is used for teaching functions, and student activities. It houses lecture rooms, labs, offices and food services. The third floor is occupied by the College of Business and Economics.





Al Bidaa Building

The Al Bidaa Building is located in the women's section, and has been in use since 1995. It is used for learning functions and students activities. It houses offices, labs, and lecture rooms. Part of the building is used as a kindergarten for children and educational training for the students of the College of Education.

Women's Car Parking Building

Located in the women's section, it has been in use since 1993. It is used for service functions. It houses offices and food services. It is considered as a main gate for female students to go to the different women's buildings.

Admission and Registration Building

The Admissions and Registration Building is located at the northern border of the men's and women's sections, and has been in use since 2003. It is used for administrative functions, especially course registration and students records. It houses offices.

Arena Pavilion Complex

Located at southeast of the men's section on the main road, the Arena Pavilion Complex has been in use since 1984. It is used for sports and students activities, and houses classrooms, offices, a football stadium and an encircling track. It supports occupancy of 5000 people.

Main Court Pavilion

Located in the men's section near the Arena Pavilion, the Main Court Pavilion has been in use since 1984. It is used for sport activities, and houses offices and other facilities. It has the capacity to accommodate 900 people.

Tennis Court Pavilion

Located in the men's section on the main road above the Arena Complex. It has been in use since 1984. It is used for sports and students activities. It houses offices, playgrounds for tennis, handball, and basketball, and security. It has a capacity of 900 people.

Swimming Pool Pavilion

Located in the men's section near the Arena Pavilion Complex. It has been in use since 1984. It is used for sports and students activities. It houses offices, 3 swimming pools, a gymnasium hall, and security rooms. It can accommodate 1500 people.

Men's Library Building

The Men's Library Building is located toward the north of the men's section. It has been in use since 1990 for facility functions. It houses offices and reading halls.

Women's Library and Exhibition Hall Center Building

Located at the southern border of the men's and women's sections. It has been in use since 1984. It is used for facility functions, and it is considered as the distribution building for the students' textbooks. It houses offices and reading halls.

Mosque (Men's)

Located in the men's section, the Mosque has been in use since 1990. It is used for religious functions. It houses a prayer hall and service rooms.

Medical Clinic

The Medical Clinic is located in the women's section beside the Women's Activities Building. It has been in use since

1998, and is used for treatments and medical functions. It houses offices, testing rooms, and a pharmacy.

Old Central Services Unit

Located in the men's section in front of the Business Operation Department. It has been in use since 1984. The Central Services Unit is used for service functions. It houses service machines such as chillers.

Men's Activities Building

Located in the men's section below the Administration Building. It has been in use since 1986. The Men's Activity Building is used for External Relations and Men's Student Activities, including career services. It houses offices, halls, entertainment facilities and some food services.

Women's Activities Building

Located in the women's section. It has been in use since 1986. The Women's Activities Building is used for Women's Student's Activities, Career Services, the Student Counseling Center, and the Student Learning Support Center. It houses offices, labs, class rooms, entertainment facilities and some food services.

Women's Sports Facility Building

Located in the women's section. It has been in use since 1986. It is used for sports and student activities. It houses a main playground, sports halls, lecture rooms, and some food services.

Bookstore

Located north of the men's section. It has been in use since 2002. It is used for service functions and houses offices.

Islamic Research Center

Located in the men's section, the Islamic Research Center has been in use since 2004 for research functions. It houses offices.

Research Facilities Buildings

Located outside the campus (Off-Campus), at the original site of the old campus. The buildings have been in use since 1984 for research and testing functions, and house labs and offices.

Center for Advanced Materials

Located in the men's section, the Center has been in use since 1984. It is used for testing and teaching, and research functions. It houses classrooms, labs and offices.

Central Store

The Central Store is located in the men's section at the junction separating the main road and the road to the women's section. It has been in use since 1984 for service functions. It is the main store for the university, and is overseen by the Business Operations department. It houses offices and materials.

Maintenance Store

Located in the men's section, the Maintenance Store has been in use since 1984 for service functions. It houses offices, stores and workshops.

Chemical Store

Located in the men's section, the Chemical Store has been in use since 1994 for research functions. It houses offices and research labs.

Car Parking

The total number of car parking spaces has reached approximately 3900. 58% of the spaces are shaded.

Classrooms

Classrooms are distributed throughout university buildings and are classified as follows:

Classroom Type	Number of Rooms
General Research Lab	31
Art Lab	4
Auditorium	8
Biology & Environmental Sciences Lab	16
Chemistry & Earth Sciences Lab	15
Computer Lab	55
Courtroom	1
Engineering Lab	29
Health Sciences Lab	10
Lecture Room	187
Other	8
Pharmacy Lab	4
Physics Lab	9
Grand Total	377





Campus Map



