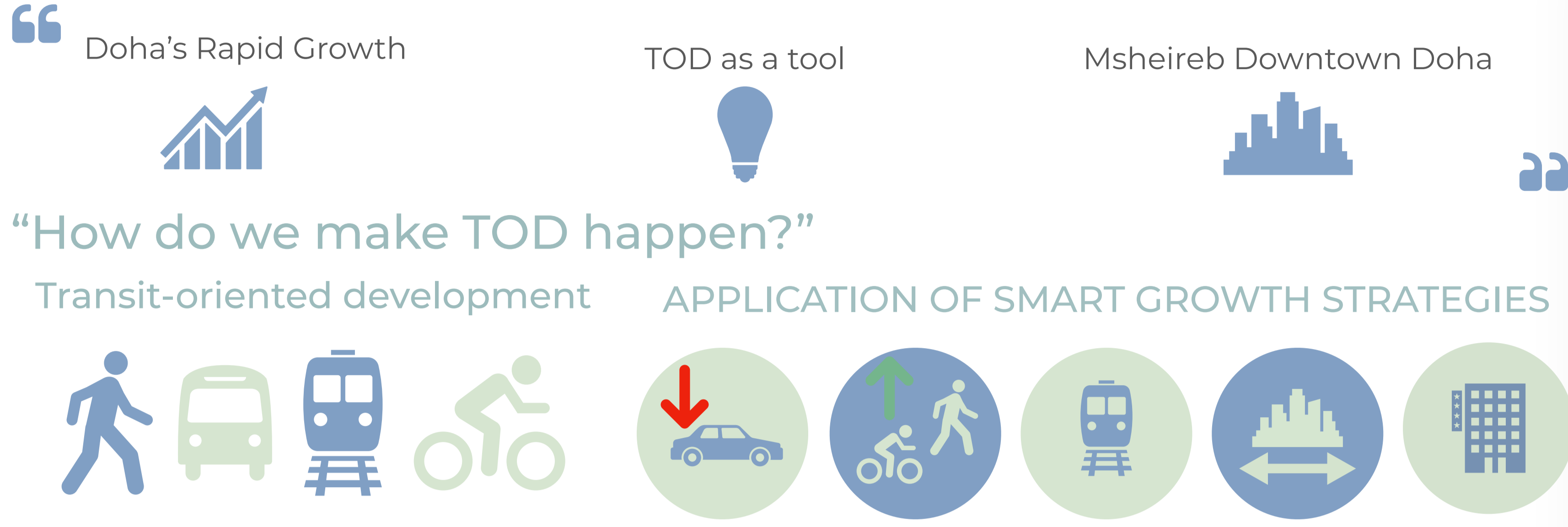


TOD'S ROLE IN ENHANCING URBAN QUALITY OF LIFE AND PRESERVING BUILT HERITAGE

THE CASE OF MSHEIREB DOWNTOWN DOHA

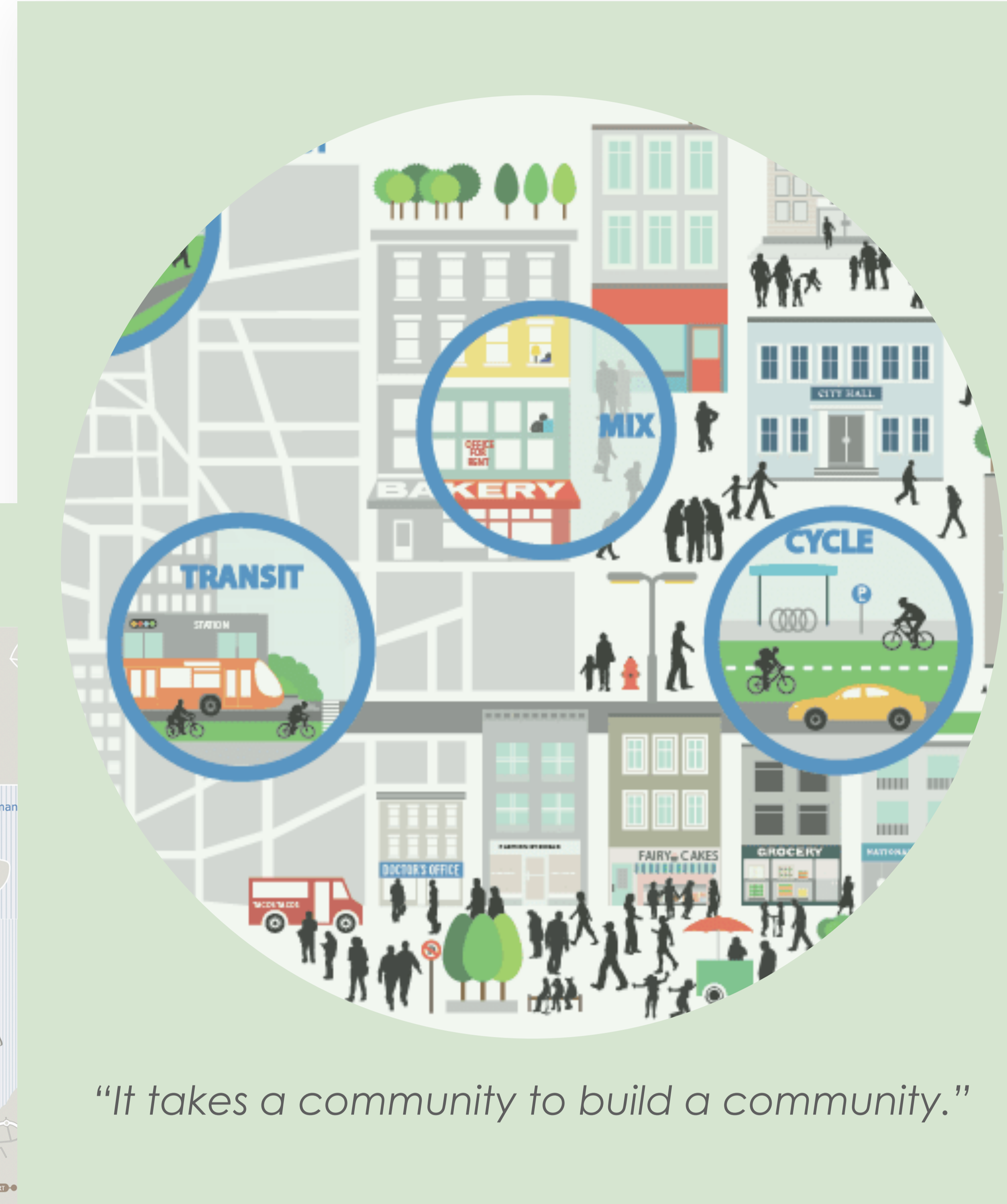
Sarah M. Al-Thani, MSc Urban Planning and design, College of Engineering, Qatar University, althanism@gmail.com
Supervised by: Dr. Raffaello Furlan, Assistant Professor, College of Engineering, Qatar University, rfurlan@qu.edu.qa

RESEARCH PROBLEM

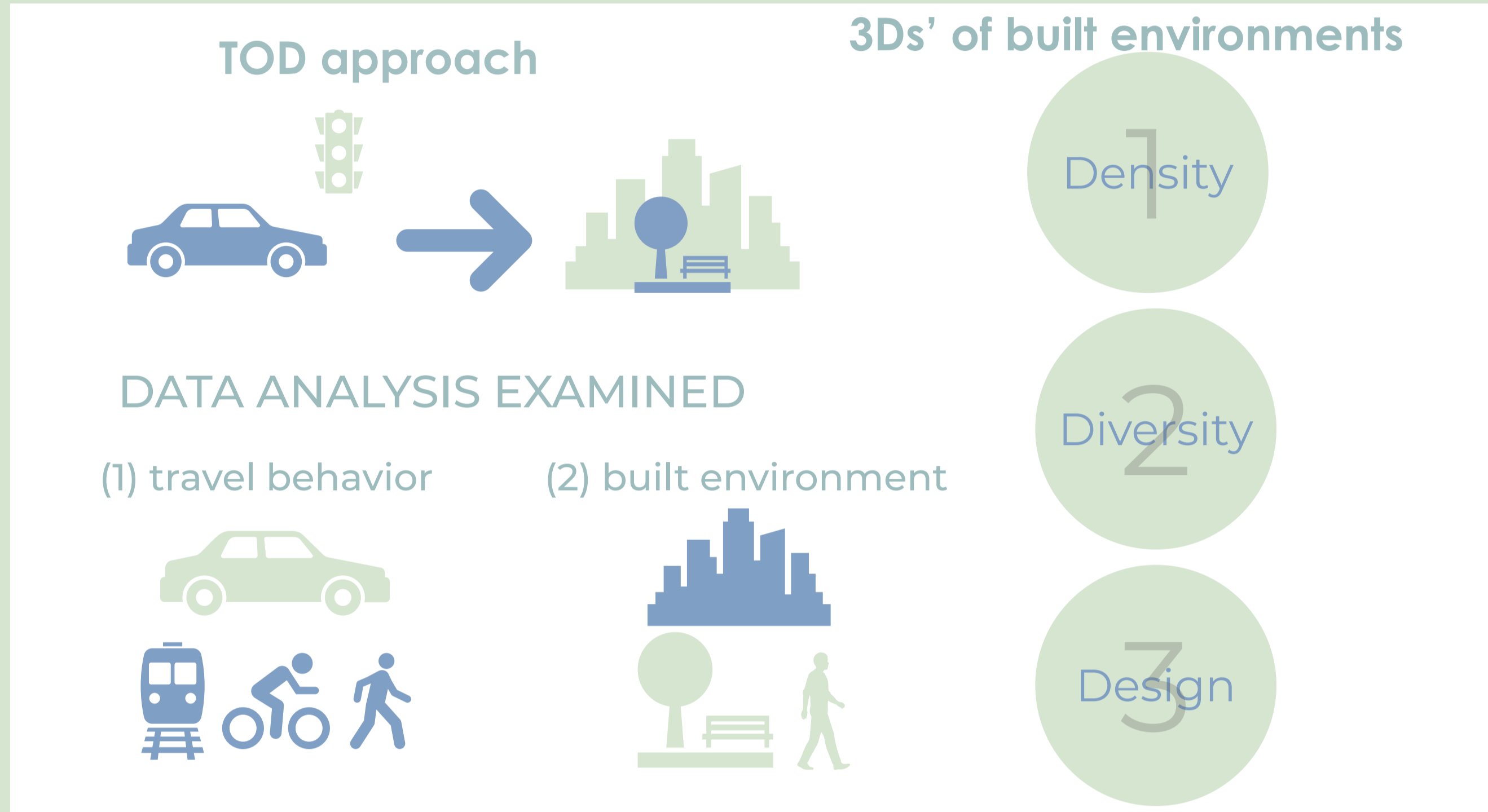


The combination of the Doha Metro and the TODs

“...will maximize the integration between transport systems and land use through the development of sustainable, vibrant, livable, compact, and mixed-use communities”

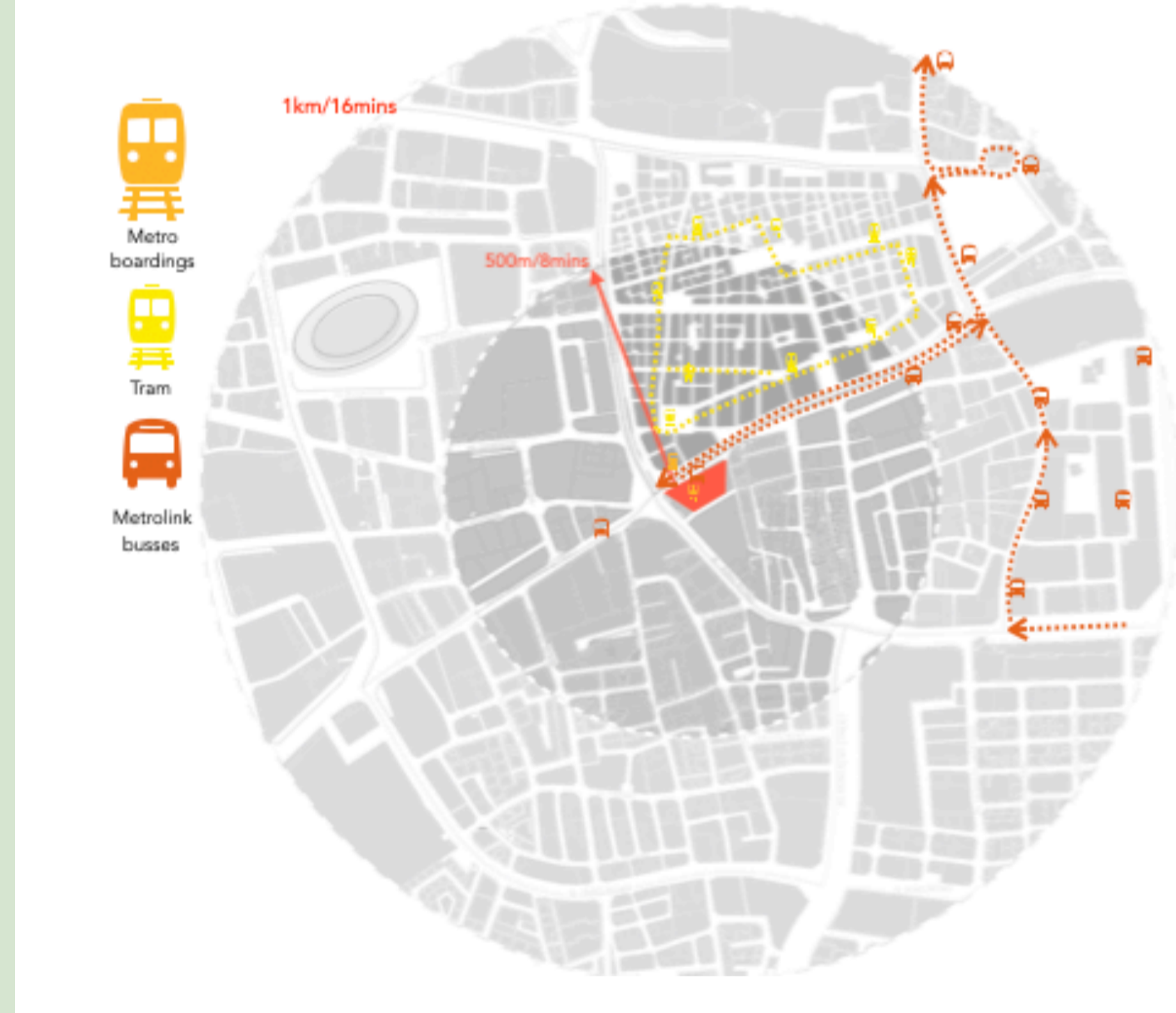


“It takes a community to build a community.”

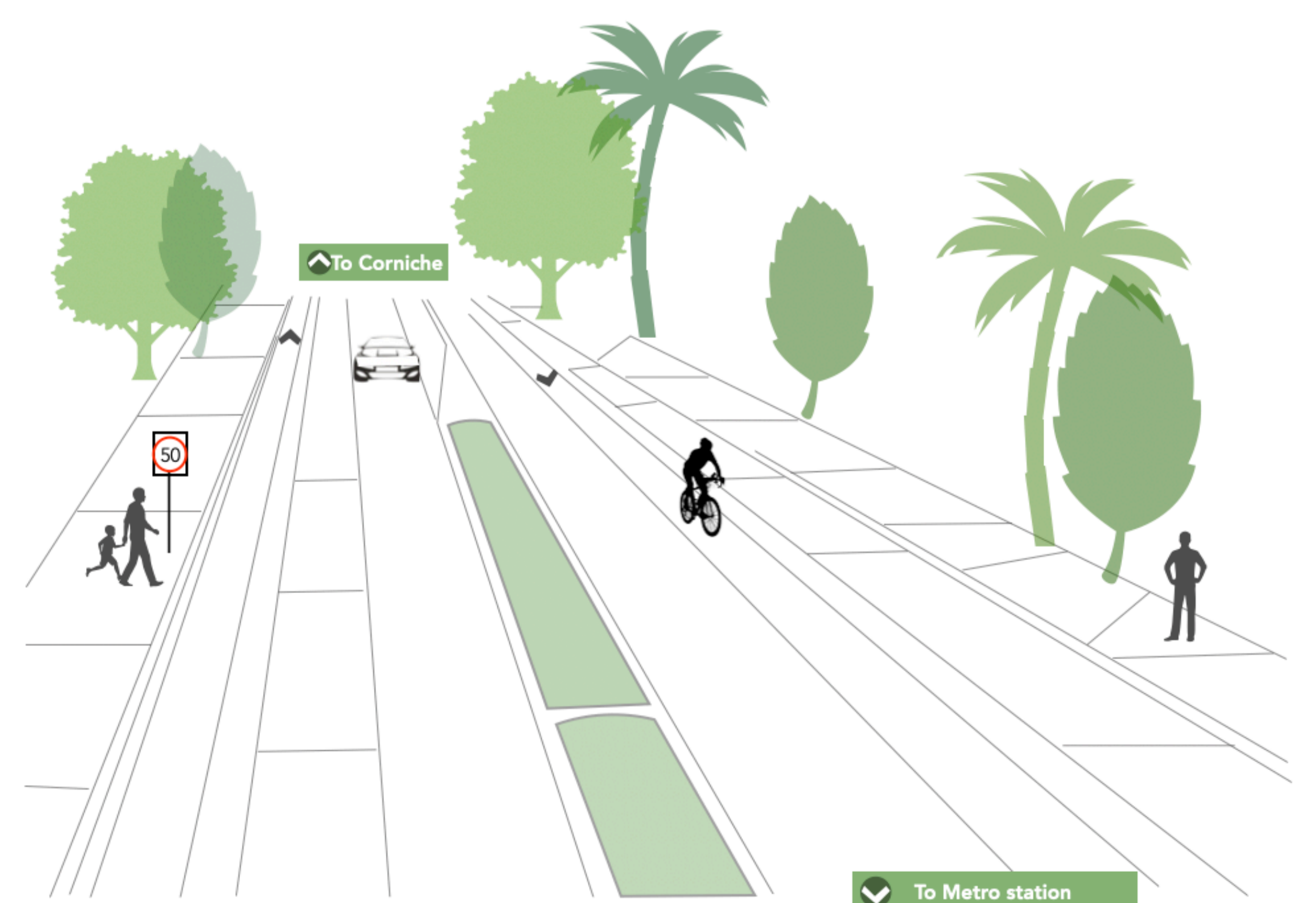
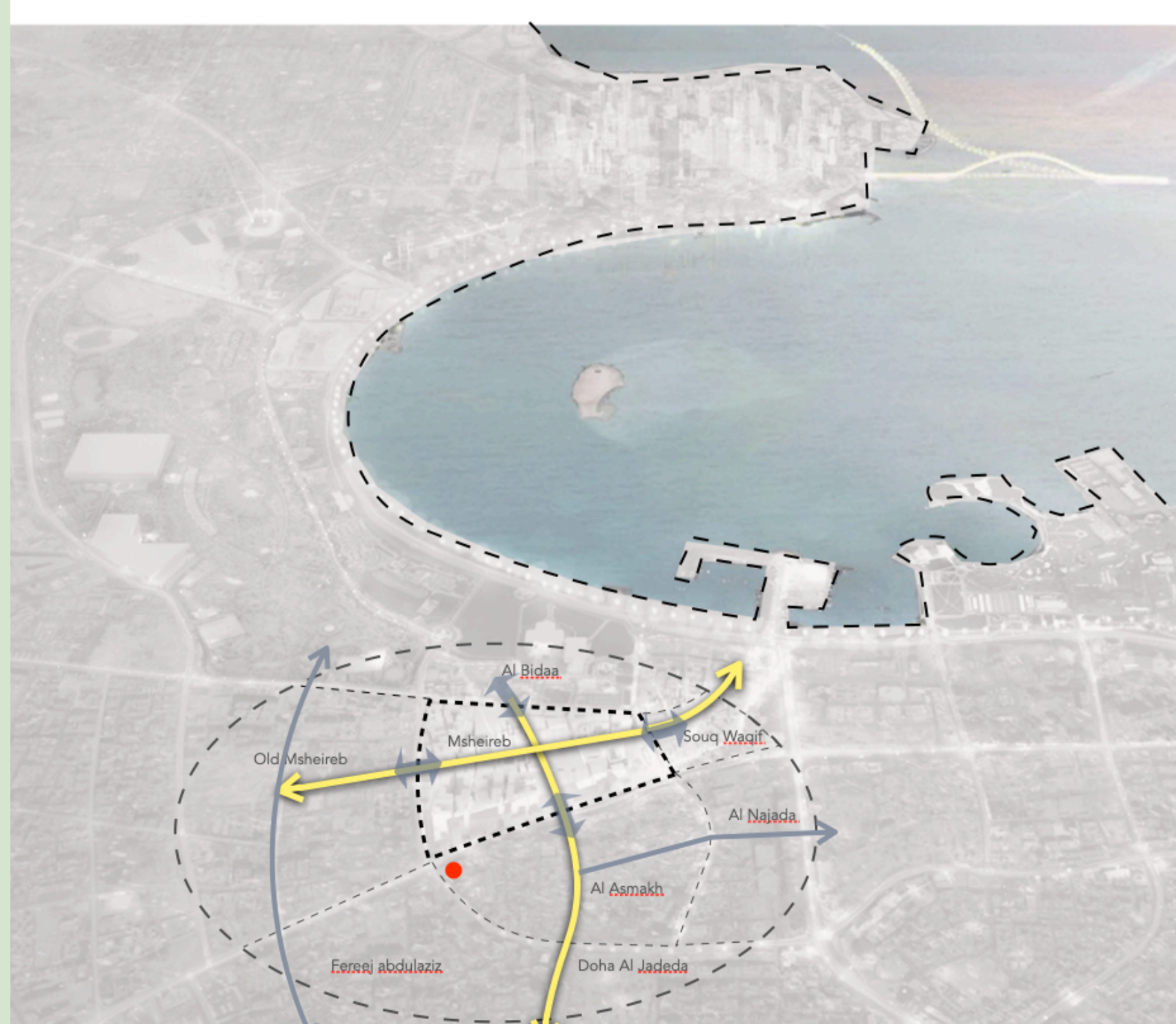


TRAVEL BEHAVIOR ANALYSIS

BUILT ENVIRONMENT ANALYSIS



PROPOSED INTEGRATED MOBILITY NETWORK



Towards designing streets for people: Wadi Msheireb Street

Direct link connecting Msheireb and cornice
A walkable environment
Protected bike lanes

Enhanced look and feel of the street
Lane reduction
Speed limit reduction