

Failed immune responses across multiple pathologies share pan-tumor and circulating lymphocytic targets

Anne Monette, ... , Igor Jurisica, Réjean Lapointe

J Clin Invest. 2019;129(6):2463-2479. <https://doi.org/10.1172/JCI125301>.

Research Article

Immunology

Oncology

Tumor-infiltrating lymphocytes (TILs) are widely associated with positive outcomes, yet carry key indicators of a systemic failed immune response against unresolved cancer. Cancer immunotherapies can reverse their tolerance phenotypes while preserving tumor reactivity and neoantigen specificity shared with circulating immune cells. We performed comprehensive transcriptomic analyses to identify gene signatures common to circulating and TILs in the context of clear cell renal cell carcinoma. Modulated genes also associated with disease outcome were validated in other cancer types. Through comprehensive bioinformatics analyses, we identified practical diagnostic markers and actionable targets of the failed immune response. On circulating lymphocytes, 3 genes (*LEF1*, *FASLG*, and *MMP9*) could efficiently stratify patients from healthy control donors. From their associations with resistance to cancer immunotherapies and microbial infections, we uncovered not only pan-cancer, but pan-pathology, failed immune response profiles. A prominent lymphocytic matrix metalloproteinase cell migration pathway is central to a panoply of diseases and tumor immunogenicity, correlates with multi-cancer recurrence, and identifies a feasible noninvasive approach to pan-pathology diagnoses. The differentially expressed genes we have identified warrant future investigation into the development of their potential in noninvasive precision diagnostics and precision pan-disease immunotherapeutics.

Find the latest version:

<http://jci.me/125301/pdf>



Failed immune responses across multiple pathologies share pan-tumor and circulating lymphocytic targets

Anne Monette,^{1,2,3,4} Antigoni Morou,^{1,3} Nadia A. Al-Banna,^{1,2,5,6} Louise Rousseau,¹ Jean-Baptiste Lattouf,^{1,2,7} Sara Rahmati,⁸ Tomas Tokar,⁸ Jean-Pierre Routy,⁹ Jean-François Cailhier,^{1,2,3,10} Daniel E. Kaufmann,^{1,3} Igor Jurisica,^{8,11,12,13} and Réjean Lapointe^{1,2,3}

¹University of Montreal Hospital Research Centre, Montreal, Quebec, Canada. ²Montreal Cancer Institute, Montreal, Quebec, Canada. ³Department of Medicine, Faculty of Medicine, University of Montreal, Montreal, Quebec, Canada. ⁴Lady Davis Institute for Medical Research, Jewish General Hospital, Montreal, Quebec, Canada. ⁵Faculty of Medicine, McGill University, Montreal, Quebec, Canada. ⁶Department of Basic Medical Sciences, College of Medicine, QU Health Cluster, Qatar University, Doha, Qatar. ⁷Department of Surgery, University of Montreal, Montreal, Quebec, Canada. ⁸Kremlil Research Institute, Toronto Western Hospital, Toronto, Ontario, Canada. ⁹Chronic Viral Illnesses Service and Division of Hematology, McGill University Health Centre, Montreal, Quebec, Canada. ¹⁰Nephrology Division, Department of Medicine, Faculty of Medicine, University of Montreal, Montreal, Quebec, Canada. ¹¹Department of Medical Biophysics and ¹²Department of Computer Science, University of Toronto, Toronto, Ontario, Canada. ¹³Institute of Neuroimmunology, Slovak Academy of Sciences, Slovak Republic.

Tumor-infiltrating lymphocytes (TILs) are widely associated with positive outcomes, yet carry key indicators of a systemic failed immune response against unresolved cancer. Cancer immunotherapies can reverse their tolerance phenotypes while preserving tumor reactivity and neoantigen specificity shared with circulating immune cells. We performed comprehensive transcriptomic analyses to identify gene signatures common to circulating and TILs in the context of clear cell renal cell carcinoma. Modulated genes also associated with disease outcome were validated in other cancer types. Through comprehensive bioinformatics analyses, we identified practical diagnostic markers and actionable targets of the failed immune response. On circulating lymphocytes, 3 genes (*LEF1*, *FASLG*, and *MMP9*) could efficiently stratify patients from healthy control donors. From their associations with resistance to cancer immunotherapies and microbial infections, we uncovered not only pan-cancer, but pan-pathology, failed immune response profiles. A prominent lymphocytic matrix metalloproteinase cell migration pathway is central to a panoply of diseases and tumor immunogenicity, correlates with multi-cancer recurrence, and identifies a feasible noninvasive approach to pan-pathology diagnoses. The differentially expressed genes we have identified warrant future investigation into the development of their potential in noninvasive precision diagnostics and precision pan-disease immunotherapeutics.

Introduction

Pan-cancer studies have demonstrated that tumor-infiltrating lymphocytes (TILs) are prognostic determinants of intratumoral heterogeneity (1). The failure of TILs in discriminating and eliminating neoantigen content from general tissue-specific, tumor-associated, or tumor-selective antigens should reclassify the emergence of cancer as a facet of the failed immune response (FIR). The one-size-fits-all potential for pan-cancer treatment by immune checkpoint blockade (ICB) is being investigated, but a significant fraction of patients do not respond to any single currently available therapies, while others progress or develop resistance. To identify TIL phenotypes contributing to responses, pan-cancer studies have correlated epithelial-to-mesenchymal transition and immune activation (2), in which immune activation and CD8⁺ TIL landscapes are associated with favorable prognostic genes (3). Pretreatment pan-cancer surveillance of IFN signaling and antigen presentation factors (4) or pan-cancer immunophenoscore (5) may become adopted by mainstream oncology. Com-

prehensive multi-cancer databases vastly extend our knowledge of tumorigenesis by providing avenues for deciphering diagnostic pan-cancer signatures distinguishing tumor types and having prognostic, predictive, and therapeutic potential (6, 7). Integrative pan-cancer analyses elucidate tumor lineage unique signatures (8) and trace metastatic lesions to tissues of origin (9). However, the use of whole tumor data sets as precise scoring determinants of immune inference requires complex deconvolution (10), complicated by the influence of tumor expression programs on TILs (11).

Although baseline tumor specimens provide a wealth of prospective information (12), their use for routine prediction to response is challenged by specimen sizes, limits imposed by cancer heterogeneity, and invasiveness and delays from surgical procurement (13). Liquid biopsies have the advantage of being easily accessible (14) where circulating tumor cells, DNA (15, 16), and pan-cancer platelets (17) have been investigated for diagnostics. However, their nonspecificities and inabilities of pinpointing the nature of primary tumors have delayed adoption of these methods (18). The traceability of circulating immune cells that are targets for immunotherapies should make their shifting phenotypes superior predictive biomarkers. Pan-cancer diagnostic and predictive biomarkers from circulating effector peripheral blood lymphocytes (PBLs) could mirror neoantigen-specific FIR TIL phenotypes, providing a “peripheral immunoscore” correlating with tumor burden or response to therapies (19, 20).

Conflict of interest: The authors have declared that no conflict of interest exists.

Copyright: © 2019, American Society for Clinical Investigation.

Submitted: October 5, 2018; **Accepted:** March 19, 2019; **Published:** May 6, 2019.

Reference information: *J Clin Invest.* 2019;129(6):2463–2479.

<https://doi.org/10.1172/JCI125301>.

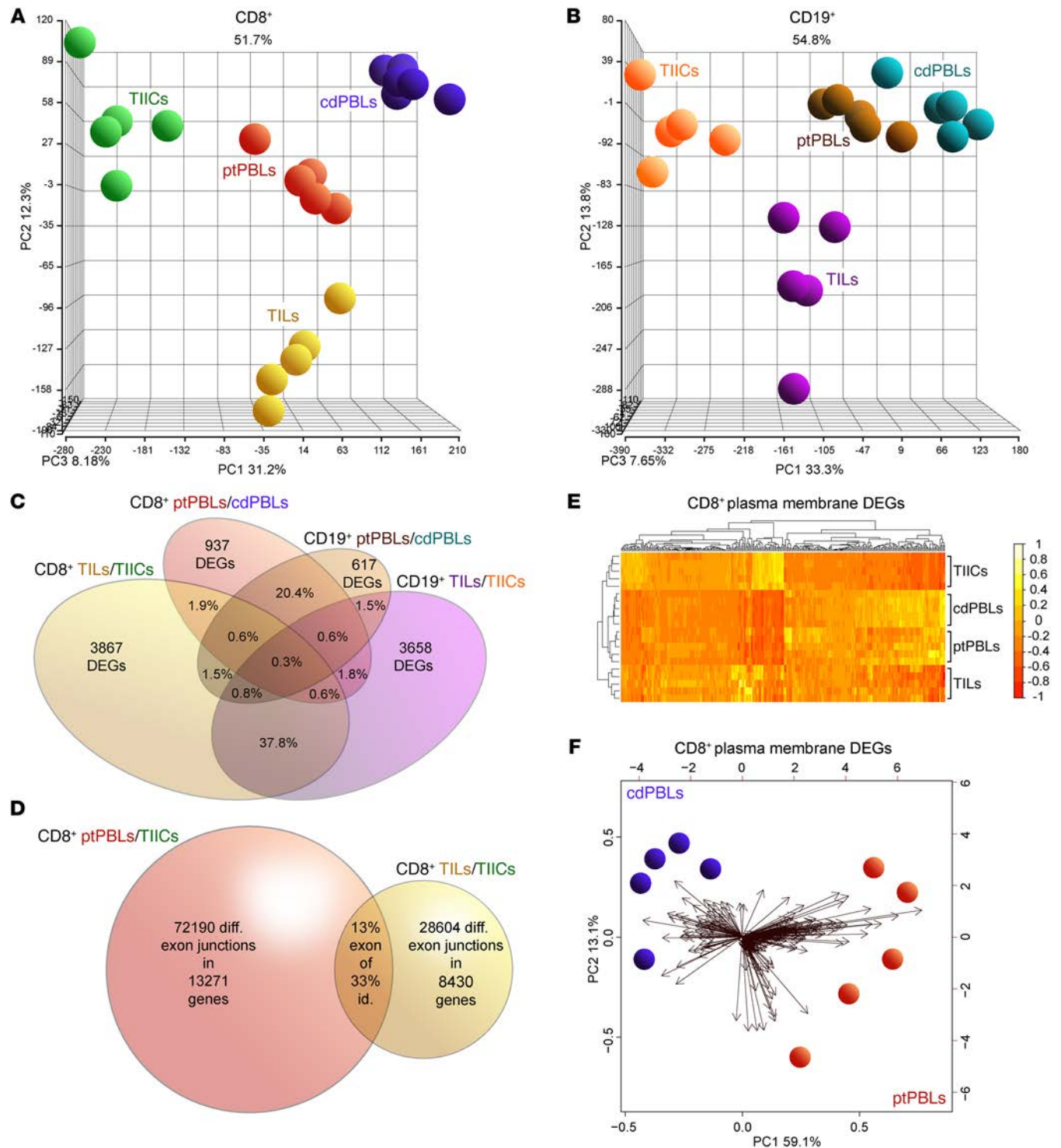


Figure 1. Distinct comprehensive transcriptomics from paired CD8⁺ and CD19⁺ profiles from ccRCC blood, tumors and tissues, and control donor blood isolates. (A and B) PCA demonstrating distinct DEG profiles from comprehensive HTA 2.0 microarray analyses of (A) CD8⁺ ($n = 15$) and (B) CD19⁺ ($n = 15$) immune cell subsets from TILs and TIL-Bs, TIICs, and circulating ptPBLs, and cdPBLs ($n = 10$). (C) Four-way Venn diagram demonstrating percentage overlaps of DEGs identified by microarrays across different source biospecimens analyzed. (D) Venn diagram showing that ptPBLs have greater numbers of differentially represented exon-exon PSR junctions compared with TILs, relative to TIICs from paired CD8⁺ samples ($P < 0.05$; ANOVA, Transcriptome Analysis Console v.3, Affymetrix). Thirteen percent of shared PSR junctions exist between ptPBLs and TILs, representing 33% of total genes common to ptPBLs and TILs having shared isoform identity. (E) GO PM proteins identified by Partek and unsupervised hierarchical clustering algorithm-generated heatmaps demonstrating that the 4 different CD8⁺ isolates are stratified according to PM, using \log_2 expression values applying the Euclidean distance metric and complete linkage clustering method (R programming language; R-studio). Heatmaps demonstrate the unsupervised clustering of PBL isolates as most closely related, with TILs and TIICs at their boundaries, suggesting that their profiles may be influenced by the cancer microenvironment. (F) Feasibility of using PM-associated proteins toward identifying pan-cancer DEGs that can stratify patients is demonstrated by PCA biplots of PM DEGs from CD8⁺ cdPBL and ptPBL isolates created on \log_2 values using the biplot function (R; R-studio). diff., differential; id., identity; PSR, probe-selected region.

We have overcome the limitations of tumor heterogeneity and biospecimen and biomarker accessibility by identifying cell surface FIR pan-cancer diagnostic and actionable targets circulating PBLs. Clear cell renal cell carcinoma (ccRCC) was used as the primary model for biomarker discovery for several reasons: it features the highest numbers of differentially expressed genes (DEGs) (21), observed PBL profiles correlate with TIL profiles (22), and its strong yet dysfunctional immunogenicity represents an enigma (23) despite renal cell carcinoma (RCC) trials demonstrating better responses to ICB than other targeting therapies (24).

We performed comprehensive microarray analyses on paired patient CD8⁺ T cells and CD19⁺ B cells isolated from ccRCC tumors (TILs, TIL-Bs), normal tumor-adjacent tissue-infiltrating immune cells (TIICs), PBMCs from patients (patient peripheral blood lymphocytes [ptPBLs]), and from age-matched healthy control donors (cdPBLs). DEGs from TILs and ptPBLs were compared with The Cancer Genome Atlas (TCGA) Kidney Renal Clear Cell Carcinoma (KIRC) cohort, identifying DEGs associated with patient prognosis. Both cell surface DEGs and DEGs having pre-existing targeting compounds, more amenable to antagonistic or agonistic design or drug repurposing, were retained. ccRCC prognostic, pan-cancer DEGs were identified in lung, breast, ovarian, and gastric cancers. A scoring system was implemented to retain DEGs whose expression (a) was restricted to lymphocytes, (b) was supported by immunology and oncology literature, and (c) had significant protein-protein interactions (PPIs) and gene expression correlations. Top-scoring DEGs were validated on a new independent RCC cohort, in which a minimum set of 3 DEGs could stratify patients. A central DEG, MMP-9, could also stratify patients having pan-cancer recurrence. Effects of pan-cancer genes were investigated for splicing defects and used in pathway discovery. Our “blinded” gene discovery pipeline design is supported by identification of DEGs previously reported as biomarkers conferring resistance and others slated as novel immunotherapeutic targets. The demonstration that pan-cancer FIR-DEGs are essential for controlling HIV-1 and other microbial infections implicates these as pan-pathology immune biomarkers with diagnostic and therapeutic potential.

Results

Distinct cell surface coding DEG profiles from ccRCC CD8⁺ and CD19⁺ PBLs and TILs. To investigate pan-cancer immunity, we performed comprehensive microarray analyses on matched case-control pairs of CD8⁺ TILs and CD19⁺ TIL-Bs from ccRCC tumors, CD8⁺ and CD19⁺ TIICs from normal tumor-adjacent tissues, and CD8⁺ and CD19⁺ PBLs from patients with ccRCC along with CD8⁺ and CD19⁺ PBLs from matched healthy control donors (Supplemental Figure 1; supplemental material available online with this article; <https://doi.org/10.1172/JCI125301DS1>). Study patient clinicopathologic characteristics are presented in Supplemental Table 1. Quality control experiments for yield and quality of various rapidly isolated immune cell subsets from tumors were performed (Supplemental Figure 2, A–D) in addition to stringent bulk total RNA quality testing prior to its amplification and application to comprehensive microarrays interrogating greater than 67,000 transcripts (Supplemental Figure 2E). The Affymetrix Transcriptome Analysis Console was used to observe prominent DEGs in

TILs and ptPBLs relative to TIICs and cdPBLs (Supplemental Figure 2F), totaling 7300 (i.e., CD8⁺ and CD19⁺ TIL-Bs/TIICs and ptPBLs/cdPBLs; 1.5-fold change; $P < 0.05$) (Supplemental Figure 1). Principal component analyses (PCAs) were generated using the Partek Genomics Suite for all paired CD8⁺ or CD19⁺ biospecimens and PBL controls (Figure 1, A and B). Venn diagrams were generated to demonstrate overlaps in DEGs represented by CD8⁺ and CD19⁺ ptPBLs (20.4%) and TILs (37.8%) (Figure 1C) and to show overlaps of possible splice junctions generating spliceforms common to CD8⁺ ptPBLs and TILs. This was made possible by using comprehensive HTA 2.0 microarrays (Figure 1D) and suggesting that patient-inherent posttranslational modification programs generating distinct RNA isoforms may also influence the behavior of TILs. To assess the feasibility of pursuing DEGs more easily amenable to therapeutic interventions such as ICB (i.e., actionable targets), we used unsupervised clustering and PCA to examine DEGs coding for molecules expressed on the plasma membranes (PMs). These analyses efficiently stratified immune isolates, with the largest differences maintained between TILs and TIICs (Figure 1E) and also permitted efficient stratification of ptPBLs and cdPBLs (Figure 1, E and F).

Prognostic ccRCC DEGs have pan-cancer prognostic potential. To identify prognostically important ccRCC DEGs, we generated Kaplan-Meier plots and P values for the 7300 significant DEGs using TCGA KIRC RNA-seq and associated clinical data sets ($n = 534$ tumor, $n = 72$ healthy control donors). This step resulted in detecting 2257 prognostic DEGs (Supplemental Figure 1). To further refine prognostic DEGs and find the most feasible actionable targets, we focused on PM-associated proteins, or those having known targeting compounds. Partek and PANTHER Gene Ontology (GO) were both used to identify PM proteins, ensuring most PM-associated DEGs would be retained. ChEMBL target searches were used to identify proteins with known targeting compounds. Together, these 2 approaches reduced target DEGs to 779, which were then investigated for their pan-cancer potential using more than 11,500 patients with lung, breast, gastric, and ovarian cancer from an online Kaplan-Meier plotter, generating 467 (i.e., 62%) target DEGs with pan-cancer potential. This refined list represented pan-cancer FIR biomarkers, grouped as either (a) agonistic targets decreased in tumors relative to normal tissues and having a positive prognosis or (b) antagonistic targets increased in tumors relative to normal tissues and having negative prognosis (Supplemental Figure 1). PCA analyses permitted the visualization of how these pan-cancer FIR-DEGs identified from ptPBLs (Figure 2A and Supplemental Figure 3A) or TILs (Figure 2B and Supplemental Figure 3B) were distributed across the 5 cancers and how they correlated with each other, and where many were found to be common to both CD8⁺ TILs and CD19⁺ TIL-Bs relative to their TIIC counterparts (Figure 2C; see full gene list in Supplemental Figure 3C). A subset of pan-cancer FIR-DEGs was also found to be common between TILs and ptPBLs (Supplemental Figure 3D).

Correlograms reflected increased correlations between the 5 cancers used to refine for pan-cancer target FIR-DEGs (compare Supplemental Figure 3E and Figure 2D). Because the selected 467 pan-cancer FIR-DEGs were discovered using whole tumor TCGA data sets, we compared percentages of correlations between 5 cancers to that of their immune infiltrates

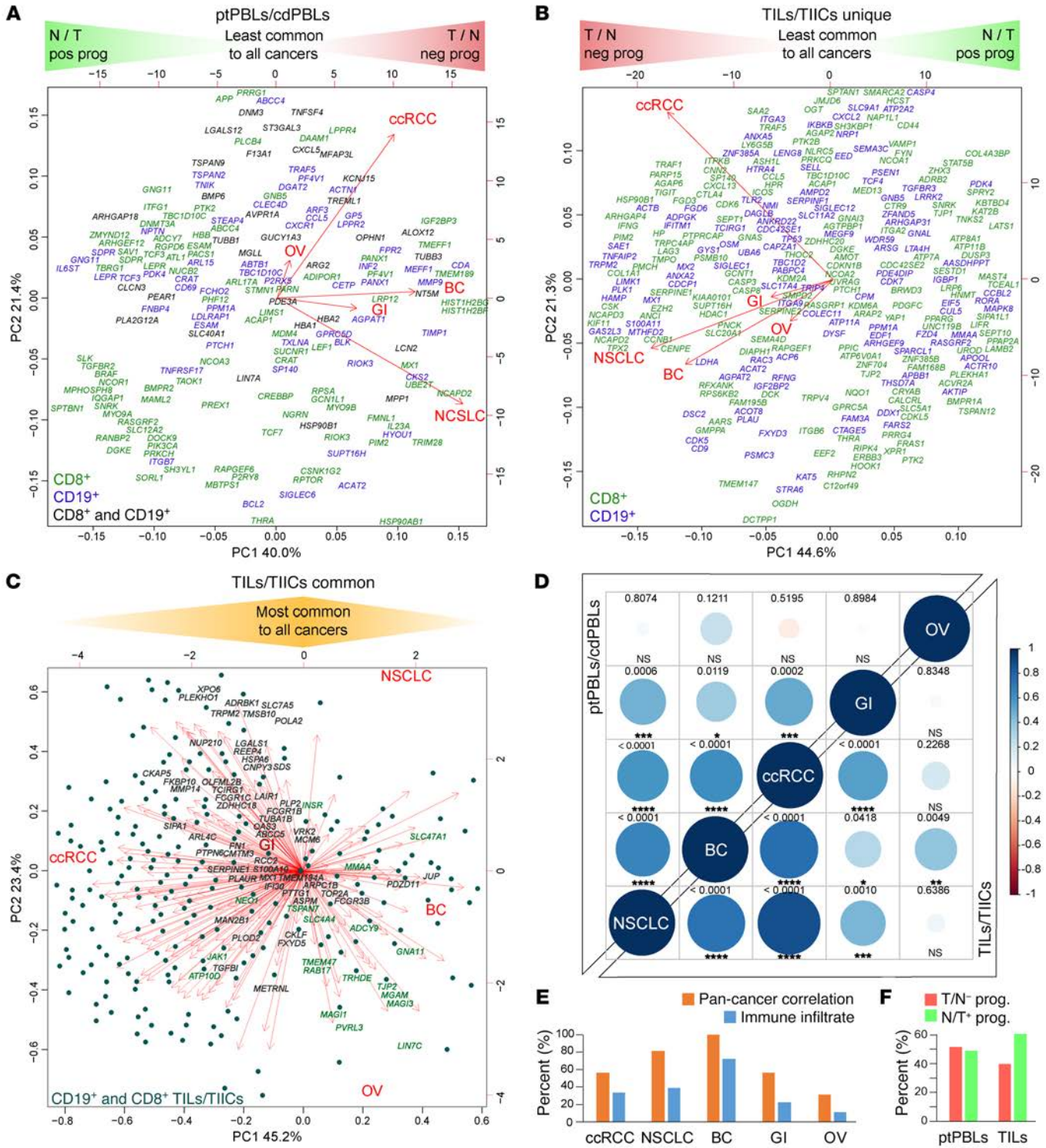


Figure 2. A subset of prognostic ccRCC DEGs have pan-cancer prognostic potential. (A and B) PCAs nominal derivatives of combined modulation of expression and effects on prognosis to visualize CD8⁺ and CD19⁺ DEGs from (A) ptPBLs and (B) TILs with significant gene modulation and effect on prognosis across the 5 cancers tested. Genes on the far left are more highly expressed in normal tissues than tumors and have positive prognostic effects (N/T pos prog), representing agonistic targets. Genes on the far right are more highly expressed in tumors than normal tissues and have negative effects on prognosis (T/N neg prog), representing antagonistic targets. PCAs also illustrate linkage between gene coexpression and cancer types, in which breast cancer (BC) ptPBLs and NSCLC TILs are most related to other cancers. In (A), all ptPBL DEGs are shown. In (B), DEGs unique to CD8⁺ TILs or CD19⁺ TIL-Bs are shown. (C) DEGs common to CD8⁺ TILs and CD19⁺ TIL-Bs are shown, where dark highlighted gene names represent best antagonistic targets, and green highlighted gene names represent best agonistic targets. (D) Correlograms representing linkage between the 5 cancers from nominal derivatives demonstrating that NSCLC and BC are most related to ccRCC, independently of patient sample number (Spearman method, coexpression coefficient ladder on right). (E) Graph demonstrating similar expression patterns of pan-cancer DEGs and genes representing infiltrating immune cell subsets used: CD45, CD3, CD4, CD8, CD20, CD56, and CD68 across pan-cancers (*n* = 11,577). (F) Graph demonstrating distributions of relative ratios of 483 agonistic vs. antagonistic pan-cancer genes, in which TILs have higher percentages of genes that are lower in tumors and have positive prognostic value. GI, gastrointestinal; OV, ovarian.

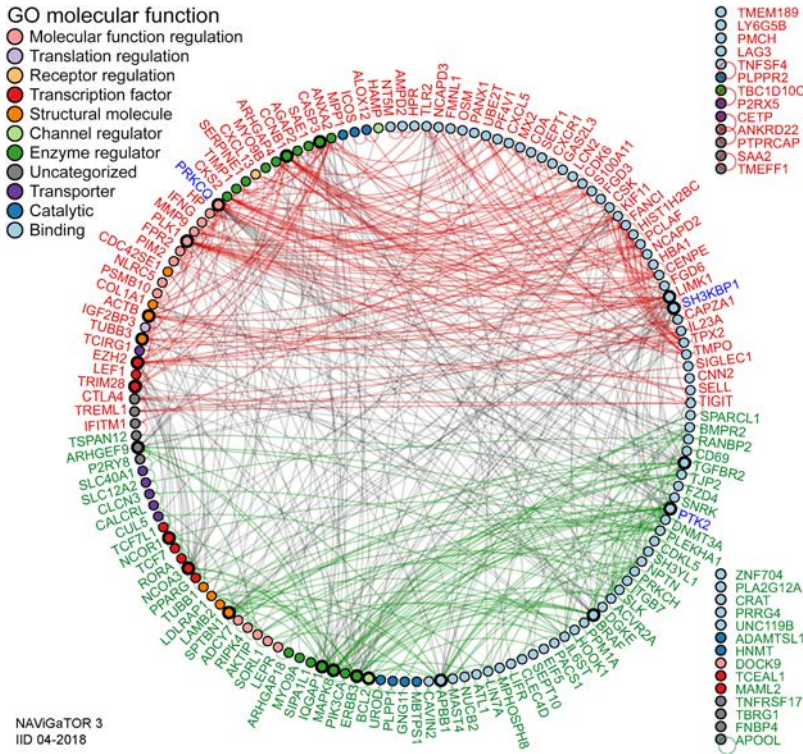
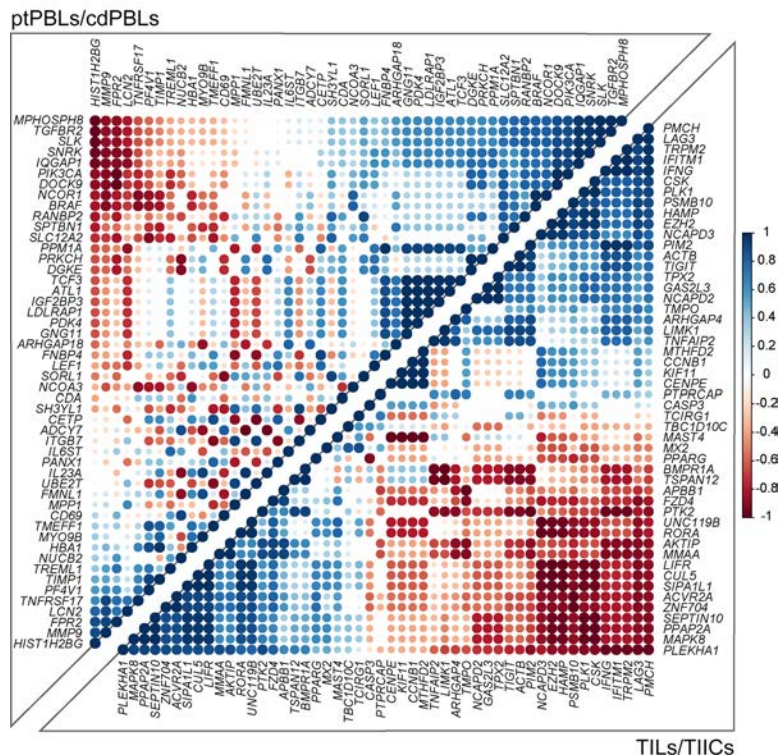


Figure 3. Pan-cancer DEGs have extensive PPI. PPI networks of the top 200 DEGs. A high PPI enrichment value ($P = 1.85 \times 10^{-10}$) indicating interactions among these DEGs is very significant relative to proteins drawn at random, indicating a biological connection as groups in defined pathways. Pan-cancer agonistic (red) and antagonistic (green) DEGs (nodes/circles) and their interactions (edges/lines) demonstrate groupings of these 2 pan-cancer DEG subclasses, and gray lines highlight interactions between them. Noninteracting DEGs are on the right (NAVIGaTOR v3 and IID v04-2018). DEG nodes are colored according to GO Molecular Functions listed in the top left legend. Larger node circles represent the highest degree of DEGs interactors within the network, and blue DEG names represent centrality of interactors (as determined by the all-pairs shortest path algorithm in NAVIGaTOR).

($n > 11,500$) providing similar trends, suggesting a strong likelihood that global FIR-DEG signatures were immune based (Figure 2E). Of these 467 pan-cancer FIR-DEGs, proportions of agonistic and antagonistic targets derived from ptPBLs were equal, whereas those derived from TILs had increased agonistic target representation (Figure 2F).

To further refine pan-cancer FIR-DEG targets, nominal derivative (binomial values) were generated to integrate quantitative and nonquantitative, and thus nonharmonizable data sets and analyses, and were used to acquire an overall score representing their (a) coupled expression and effect on overall survival ($n = 5$ cancers, Kaplan Meier-plotter), (b) coupled RNA and protein

Figure 4. Pan-cancer DEGs have extensive coexpression dynamics. Correlograms of the top 200 selected prognostic pan-cancer DEGs demonstrate extensive coexpression dynamics in CD8+ ccRCC isolates (Spearman method, expression ladder on right) ($n = 20$). Predominant pathways of the 4 most highly correlating pan-cancer gene groups included GO biological processes – cellular responses to stimulus, receptor signaling, and regulation of metabolic processes and Kegg pathways – adherens junctions and colorectal, endometrial, blood and pancreatic cancers for the top right correlating ptPBL gene group. The bottom left ptPBL gene groups had extracellular matrix disassembly. For TILs, the bottom left gene group was stronger for GO biological processes such as receptor signaling, developmental processes, cell communication, and signal transduction, while the top right TIL gene group was dominated by cell cycle regulation processes ($P = 4.98 \times 10^{-05}$) and also regulation of T cell activation and cytokine production.



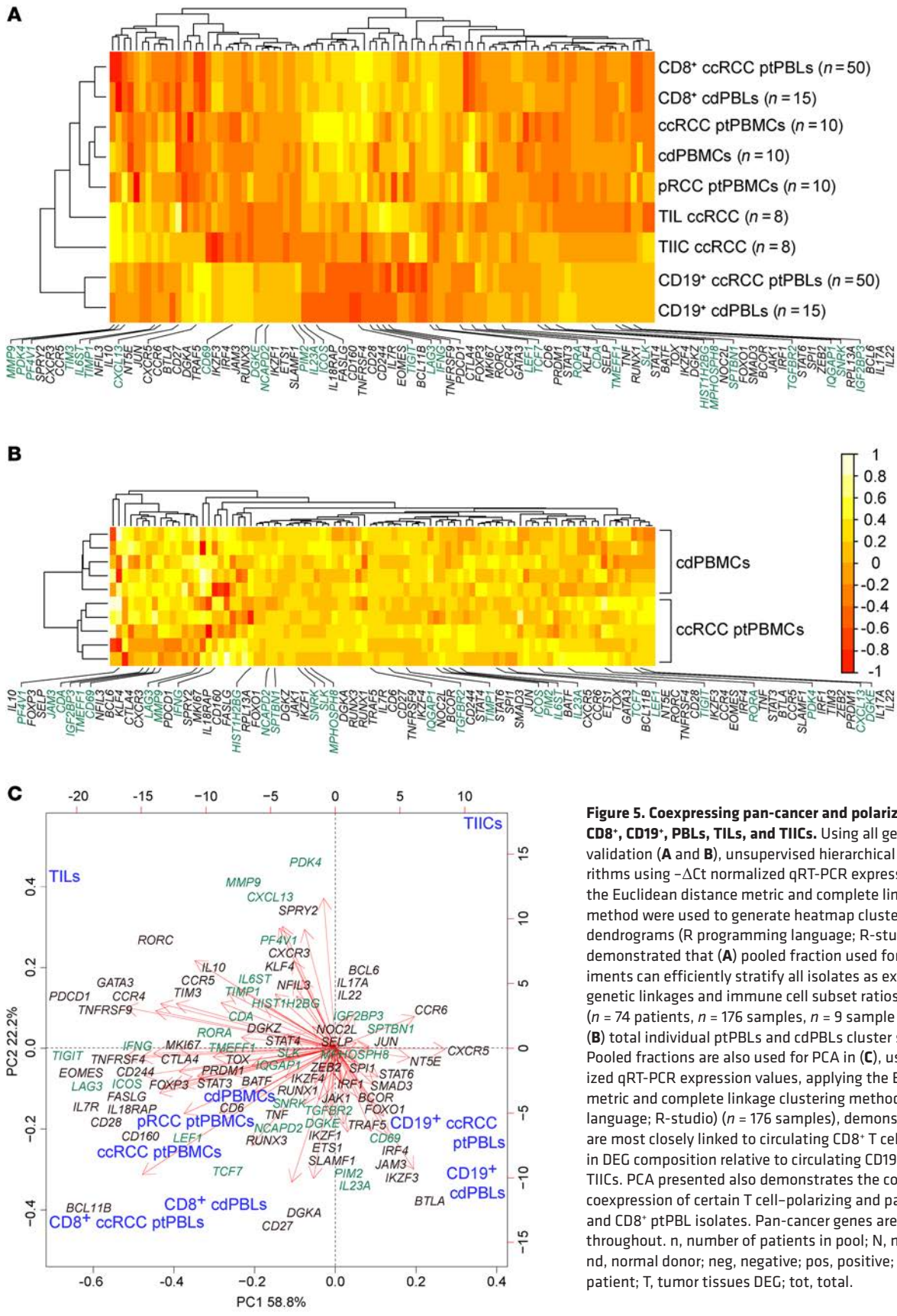


Figure 5. Coexpressing pan-cancer and polarizing DEGs stratify CD8⁺, CD19⁺, PBLs, TILs, and TIICs. Using all genes from qRT-PCR validation (A and B), unsupervised hierarchical clustering algorithms using $-\Delta Ct$ normalized qRT-PCR expression values applying the Euclidean distance metric and complete linkage clustering method were used to generate heatmap clustering and associated dendrograms (R programming language; R-studio). Heatmaps demonstrated that (A) pooled fraction used for validation experiments can efficiently stratify all isolates as expected from their genetic linkages and immune cell subset ratios of PBL populations (n = 74 patients, n = 176 samples, n = 9 sample pools) and that (B) total individual ptPBLs and cdPBLs cluster separately (n = 10). Pooled fractions are also used for PCA in (C), using $-\Delta Ct$ normalized qRT-PCR expression values, applying the Euclidean distance metric and complete linkage clustering method (R programming language; R-studio) (n = 176 samples), demonstrating that PBLs are most closely linked to circulating CD8⁺ T cells and are different in DEG composition relative to circulating CD19⁺ B cells, TIL-Bs, and TIICs. PCA presented also demonstrates the common and differing coexpression of certain T cell-polarizing and pan-cancer DEGs in TIL and CD8⁺ ptPBL isolates. Pan-cancer genes are highlighted in green throughout. n, number of patients in pool; N, normal tissues DEG; nd, normal donor; neg, negative; pos, positive; prog, prognosis; pt, patient; T, tumor tissues DEG; tot, total.

expression in myeloid and lymphoid cells relative to 12 other cancers, (c) modified in expression levels in cancers relative to normal tissues ($n = 17$ cancers; The Human Protein Atlas), and (d) direct published literary evidence of DEG expression in the immune subtypes from which they were identified (Supplemental Table 2). The top 200 scoring pan-cancer ptPBLs and TIL FIR-DEGs were subjected to PPI analyses using the rudimentary search engine (STRING) (Supplemental Figure 3F and ref. 25), providing a PPI enrichment value ($P = 1.85 \times 10^{-10}$) warranting further investigation. For more comprehensive PPI analyses, we used IID, pathDIP, and NAViGaTOR, providing new evidence of interactions (Figure 3), with most the highly associated pathways to antagonistic targets including the immune system, TNF signaling, NF- κ B, and agonistic pathways WNT signaling, chemokine signaling, proteoglycans, and GPCRs ($P < 1 \times 10^{-10}$) (Supplemental File 1A). Finally, the top-scoring 200 ptPBLs and TIL pan-cancer FIR-DEGs were further refined by retaining those that were the most correlated in differential pan-cancer gene expression toward discovery of novel mechanistic pathways not deciphered from the above analyses (Figure 4). The combination of these scoring methods was used to select pan-cancer FIR-DEG for validation on a new RCC patient cohort (Supplemental Figure 1).

Pan-cancer and polarizing DEGs stratify CD8⁺, CD19⁺, PBLs, TILs, and TIICs. Twenty-eight pan-cancer FIR-DEGs and 62 commonly used T cell-polarizing genes defining known T cell subsets were selected for validation on a new, independent 74-patient RCC cohort, using TaqMan Gene Expression Assays on 96.96 microfluidic BioMark HD Real-Time PCR system dynamic arrays (Fluidigm), providing the advantage of DEG coexpression analysis. Total CD8⁺ ptPBL RNA from 41 patients with ccRCC, 8 with RCC, and 6 patients with papillary renal cell carcinoma (pRCC), and CD8⁺ cdPBL RNA from control donors were analyzed, with 3 ccRCC patient duplicates added as inter-assay RNA extraction controls. Five total ptPBMC and five total ndPBMC RNA preparations were also included. Finally, to maximize use of the microfluidics chip and to determine whether these could provide a baseline for DEG expression, pooled total RNA samples from CD8⁺ ($n = 50$ patients) and CD19⁺ ($n = 50$ patients) ptPBLs, CD8⁺ ($n = 15$ patients) and CD19⁺ ($n = 15$ patients) cdPBLs, ccRCC PBMCs ($n = 10$ patients), pRCC PBMCs ($n = 10$ patients), ndPBMCs ($n = 10$ control donors), and paired ccRCC TILs ($n = 8$) and TIICs ($n = 8$) were also included. BioMark HD-generated heatmaps, housekeeping genes, and loading controls are shown in Supplemental Figure 4, A–D.

Following normalization, correlograms were used to visualize coexpression dynamics between all DEGs (Supplemental Figure 4E). Unsupervised clustering demonstrated that pooled RNA fractions were stratified as expected, with CD8⁺ and CD19⁺ isolates stratifying furthest apart, and total PBMC isolates stratifying independently, but remaining closer to CD8⁺, as a function of T cells (7%–24%) representing a larger frequency of total PBMCs than B cells (1%–7%) (Figure 5A). Also expected, TILs stratified closest to total PBMCs, yet remained close to TIICs—reflecting tissue-infiltrating immune profiles. Finally, ccRCC ptPBLs and cdPBLs from either CD19⁺ or CD8⁺ isolates clustered closely, at opposite ends of the heatmap. Unsupervised clustering was also

used to observe that individual ccRCC ptPBMCs were efficiently stratified from ndPBMCs (Figure 5B). PCA was used to visualize coupling of pooled RNA fractions and DEG coexpression, here demonstrating that patient TILs, PBMCs, and CD8⁺ ptPBLs were distantly stratified from both TIICs and CD19⁺ ptPBLs (Figure 5C). This 3-dimensional view also provided evidence of coexpressing groups of pan-cancer FIR-DEGs and polarizing genes.

Pan-cancer DEGs stratify patients with RCC from control donors. Differential expression and correlation analyses were coupled to identify pan-cancer FIR-DEG combinations most efficiently stratifying patients. Several pan-cancer FIR-DEGs (*ICOS*, *PF4V1*, *IFNG*, *LAG3*, *TIGIT*, *CDA*, *PDK4*, *KLF4*, *PIM2*, *TIMP1*, *IGF2BP3*, *IL23A*, *LEF1*, and *TCF7*), in combination with other T cell genes, efficiently stratified patients from control donors to an accuracy of 90.1% (Figure 6, A and D). The absence of novel discovered pan-cancer FIR-DEGs uncommon to T cell polarization caused loss of patient stratification (Supplemental Figure 5A); however, control donors still stratified with an *LEF1*- and *NT5E*-expressing population, which included other biomarkers of activation, and immune checkpoint *BTLA*, which we and others believe marks T cells having enhanced survival properties (26, 27).

Combination testing revealed that a smaller set of these patient-stratifying pan-cancer genes (*IFNG*, *CDA*, *PDK4*, *KLF4*, *IGF2BP3*, and *LEF1*) could also stratify patients to an accuracy of 89.1% (Figure 6, B and D), which could not be met in their absence (Supplemental Figure 5, B and C). Additional combination testing identified a minimal set of 3 DEGs (*MMP9*, *FASLG*, and *LEF1*) stratifying patients to an accuracy of 79.3% (Figure 6, C and D). Interestingly, aside from stratifying patients from control donors, pan-cancer FIR-DEG PCAs revealed 2 dominant CD8⁺ ptPBL populations containing either *FASLG* or *LEF1* together responsible for triggering cell death or cell activation. In addition, the 3 internal patient duplicates remained closely clustered throughout PCAs, whereas pooled RNA fractions were centralized among their counterparts (Figure 6, A–C). Further correlation analyses performed on patients with RCC populating yellow PCA quadrants occupied by control donors demonstrated these to have increased *CXCR3* ($P = 0.0021$; $r = 0.4898$; CI, 0.1874–0.7074) and *CXCR5* ($P = 0.0029$; $r = 0.4764$; CI, 0.1705–0.6988) (Spearman method), suggesting that these may be 2 key RCC fitness genes, also recently linked to increased abilities of broadly neutralizing antibody production by HIV-1 elite controllers (28).

Pan-cancer FIR-DEGs common to RCC and HIV. This link between RCC ptPBL DEGs and HIV-1 controllers prompted us to examine other pan-cancer FIR-DEGs commonly expressed by HIV-1 controllers. Intriguingly, the majority of our validated pan-cancer FIR-DEGs were represented in an HIV-1 elite DEG screen (29). As such, we searched the literature to elucidate which of these DEGs were useful to both cancer and HIV-1 when expressed by PBLs, demonstrating that 60% of these similarly polarized T cells toward permissiveness to cancer development and HIV-1 infection (Supplemental Table 5). In comparing HIV-1 controller DEGs similarities to ccRCC DEGs, we observe that the pan-cancer DEG prioritization pipeline increased identity to HIV-1 controller DEGs from 17% (467 pan-cancer DEGs) to 50% (top 100 pan-cancer DEGs) (Figure 6E). This finding led us to consider whether the pan-cancer FIR-DEG pipeline was actually

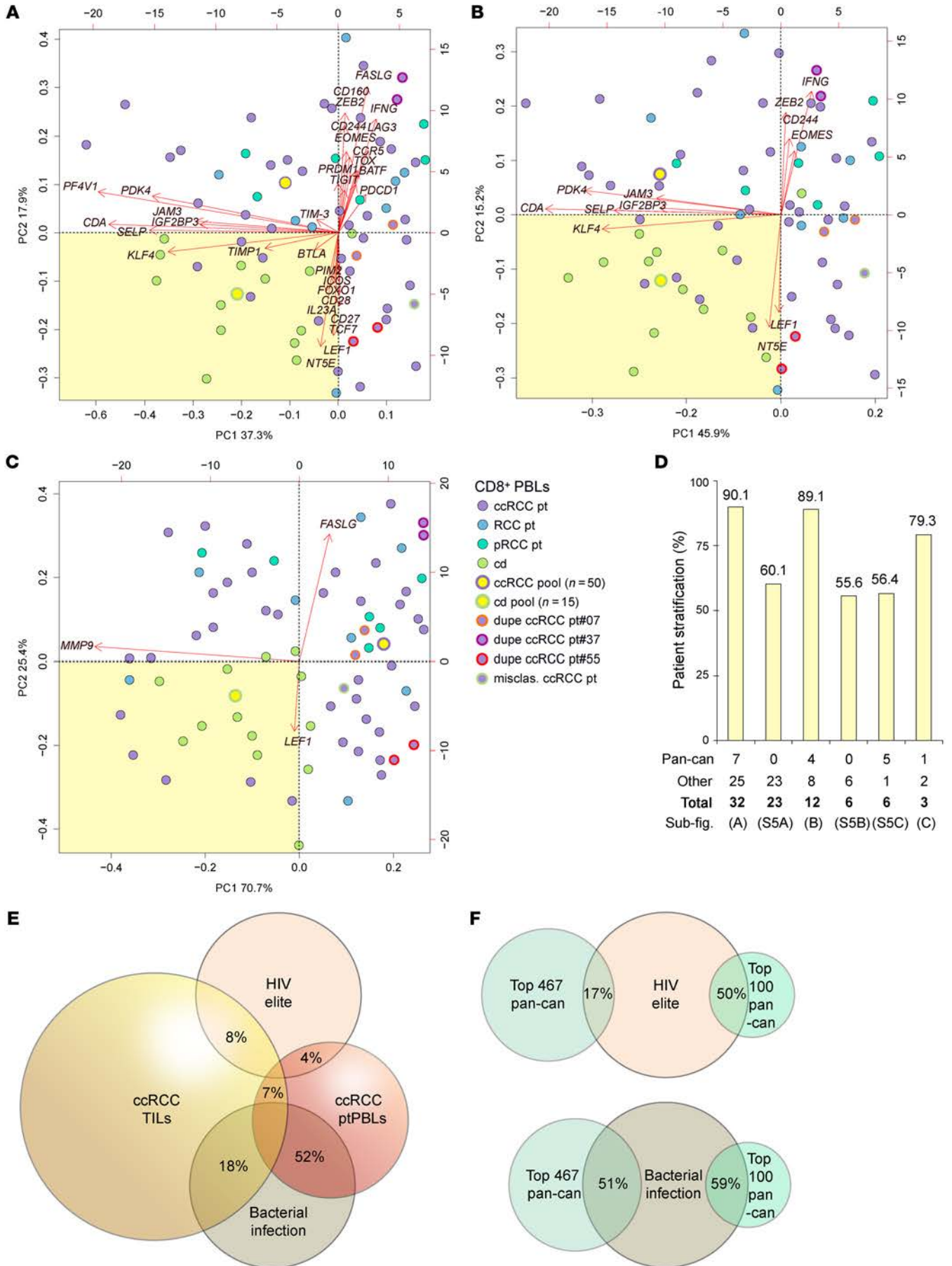


Figure 6. Iterative DEG combination testing defining minimal gene sets required for stratifying patients from control donors according to circulating CD8⁺ T cells. Normalized $-\Delta\text{Ct}$ qRT-PCR DEG expression values from individual and pooled CD8⁺ ptPBLs and cdPBLs were used for PCA using applying the Euclidean distance metric and complete linkage clustering method (R programming language; R-studio) ($n = 69$). **(A)** Patients are stratified using 32 DEGs including pan-cancer (*ICOS*, *PF4V1*, *IFNG*, *LAG3*, *TIGIT*, *CDA*, *PDK4*, *KLF4*, *PIM2*, *TIMP1*, *IGF2BP3*, *IL23A*, *LEF1*, and *TCF7*), T cell-polarizing (*FASLG*, *ZEB2*, *EOMES*, *CCR5*, *TOX*, *PRDM1*, *BATF*, *FOXO1*, *CD28*, and *CD27*), adhesion (*JAM3*, *SELP*), and immune checkpoint DEGs (*CD160*, *CD244*, *PDCD1*, *TIM-3*, *BTLA*, and *NTSE*). **(B)** Patients are stratified using 12 DEGs including pan-cancer (*CDA*, *PDK4*, *KLF4*, and *IGF2BP3*) and adhesion (*JAM3*, *SELP*) DEGs. **(C)** Patients are stratified using 3 DEGs (pan-cancer, *MMP9*, and *LEF1*; T cell polarizing, *FASLG*). Boxes with a pale yellow background highlight PCA-stratified control donors used to calculate the percentage of patient stratification. **(D)** Graph representing the percentage of patient stratification from DEG groups in **(A–C)** and in Supplemental Figure 5, with representative numbers of pan-cancer genes among groups at the bottom ($n = 66$, nonduplicate samples). **(E and F)** Venn diagrams demonstrating overlaps between **(E)** CD8⁺ ccRCC ptPBL DEGs, CD8⁺ ccRCC TIL DEGs, CD8⁺ HIV elite controllers, and PBMC from patients infected with bacteria and **(F)** effect of pan-cancer pipeline on enhancing CD8⁺ DEG identity. dupe, duplicate sample; misclas., misclassified benign kidney lesion; n, number of pooled samples; other, other DEGs; pan-can, pan-cancer; ub-fig., associated sub-figure.

identifying pan-pathology genes. We thus compared our pan-cancer DEGs to data sets from another study aimed at identifying frontline biomarkers common to numerous pathologies (30). Strikingly, 82.1% of our ptPBL-based and 42.8% of our TIL-based top 200 pan-cancer FIR-DEGs were confirmed by their findings, with 51% of 467 pan-cancer DEGs and 59% of the top 100 pan-cancer DEGs present (Figure 6F). A total of 71.1% of DEGs were commonly reflected by bacterial infection data sets. Potentially revealing pan-pathology T cell biomarkers, we then compared our lists to cancer patient data sets of response to anti-PD-1 immunotherapy (31, 32), highlighting a few of our pan-cancer FIR-DEGs (Supplemental Table 6), notably including our *MMP9*, *FASLG*, and *LEF-1* minimal triad stratifying patients with ccRCC from control donors (Figure 6C; see Supplemental Table 7 for a summary of validated DEGs common to other data sets).

Pan-cancer DEGs are associated with pan-cancer recurrence and T cell activation. Within the validation cohort, 10 of 28 patients with ccRCC (35.7%) were recorded as having been previously treated for other malignancies including kidney, bladder, blood, breast, colon, liver, melanoma, ovary, prostate, rectal, and uterine cancers, in which a few had suffered from 3 different malignancies with no recorded metastases. We used this opportunity to compare validated DEGs across control donors, patients with RCC, and those positive or negative for pan-cancer recurrence. Strikingly, *MMP9* expression best stratified patients with pan-cancer recurrence ($P < 0.0001$, t test; $P = 0.007$, 2-way ANOVA with Tukey's post test) (Figure 7A). All patients categorized as *MMP9*^{hi} had previously suffered from RCC, along with blood, breast, colon, melanoma, ovarian, prostate, or uterine cancers with a high proportion of adenocarcinomas (80.0%). A disproportionate number of patients categorized as *MMP9*^{lo} had previously suffered from bladder or prostate cancer (66.6%). Other DEGs stratifying patients with recurring pan-cancer were *KLF4*, *RORC*, *PDK4*, and *CCR4*; yet these genes were decreased in these patients with recurrence.

From PCA analyses demonstrating that pan-cancer DEGs stratified 2 CD8⁺ T cell pools in addition to individual patients (Figure 6), along with observations of their ability to stratify patients according to pan-cancer recurrence (Figure 7A), we applied correlograms to observe whether their combined expression could tip the balance between tolerant/anergic and activated/effector T cell profiles. The merging of correlograms providing a split in DEG populations, expression levels of DEGs between isolates, and balance of DEGs formerly documented in the literature as being associated to activation or tolerance phenotypes, suggested existence of a dominant activated effector CD8⁺ ptPBL population (Figure 7B). The majority of these effector DEGs (69.2%) providing an activation phenotype were downregulated in patients with pan-cancer recurrence, suggesting these patients may lack the ability to mount an immune response.

Pan-cancer DEGs synergize toward prognosis and are subject to splicing defects. The TCGA KIRC-probing prognostic algorithm was modified to test all combinations of additive effects of pan-cancer FIR-DEGs on patient prognosis. The only DEGs with marked additive effects on patient survival were *MMP9*, *LEF1*, *PF4V1*, and *TIMP-1* — this observation gained additional support from correlograms providing evidence of their coexpression (Figure 7C). Additionally, relative to the 3-DEG signature stratifying patients (Figure 6C), although *FASLG* was not associated with prognosis ($P = 0.401$), patients categorized as *MMP9*^{hi} *LEF1*^{hi} *FASLG*^{hi} KIRC had reduced survival rates (HR, 0.0988-0.6324; $P = 3.71 \times 10^{-05}$). While the TCGA KIRC data set represents whole tumor RNA expression, the Human Protein Atlas showed that unlike the others having additive effects on prognosis, expression of *MMP9* RNA and protein is strictly associated with lymphoid and myeloid systems, thus, possibly enhancing prognostic effects by identifying immune-relevant signature populations from whole tumor data sets. Inverse correlation observed between oncostatin melatonin receptor 1A (*MTNR1A*), extensively expressed by lymphocytes and *MMP-9* expression in RCC as a plausible mechanism for our findings (33), prompted us to reexamine microarray data sets to see that *MTNR1A* was reduced in ccRCC CD8⁺ TILs ($P = 8.3 \times 10^{-04}$) and CD19⁺ TIL-Bs ($P = 1.4 \times 10^{-04}$).

To gain insight on other possible mechanisms behind effects of pan-cancer FIR-DEGs on patients, and because we used the Human Transcriptome Array (HTA) 2.0 microarray able to distinguish between differential gene expression and transcript isoform modulation, we used the microarray data set to observe whether these differed at the isoform level. In paired patient CD8⁺ ptPBLs and TILs, with the exception of *HIST1H2BG*, *ICOS*, and *IFNG*, all other validated pan-cancer FIR-DEGs had modified isoforms, and 47.36% of these were found to be mirrored between CD8⁺ ptPBLs and TILs relative to TIICs (Figure 7D) (Supplemental Table 8). Additionally, as determined by Affymetrix Transcriptome Analysis Console software, there were many more distinct transcript isoforms present and heightened splicing indices for ptPBLs than for TILs, relative to TIICs (i.e., ptPBLs vs. TIICs, 71.97%; avg. splicing index = 18.432, avg. splicing event score = 0.224; TILs vs. TIICs, 28.57%, avg. splicing index = 1.727, avg. splicing event score = 0.306). Thus, the transcript isoform repertoire of CD8⁺ ptPBLs is much larger than that of CD8⁺ TIL, likely due to similarities for tissue infiltrates but with a few notable dif-

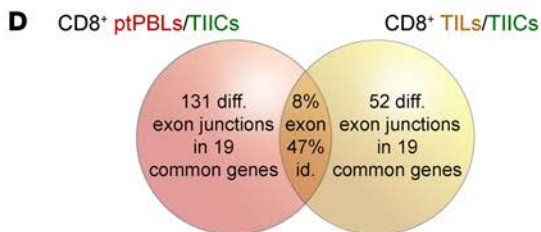
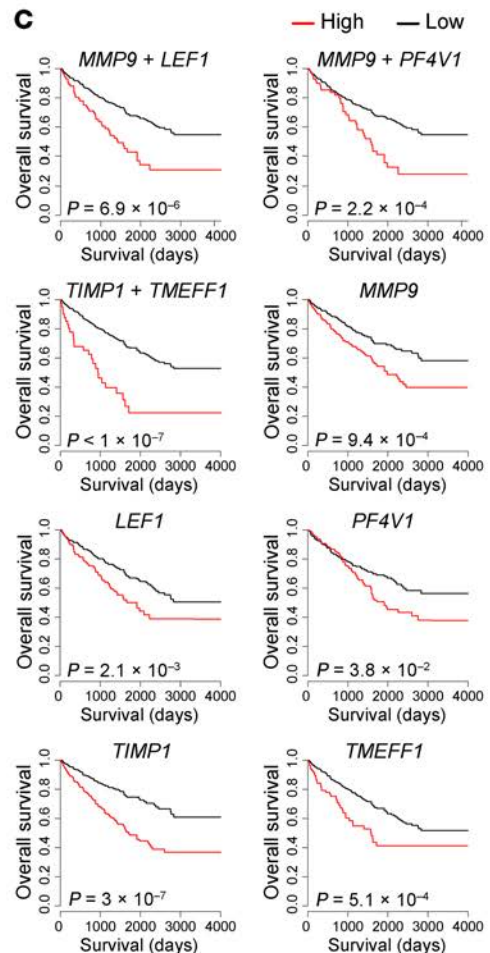
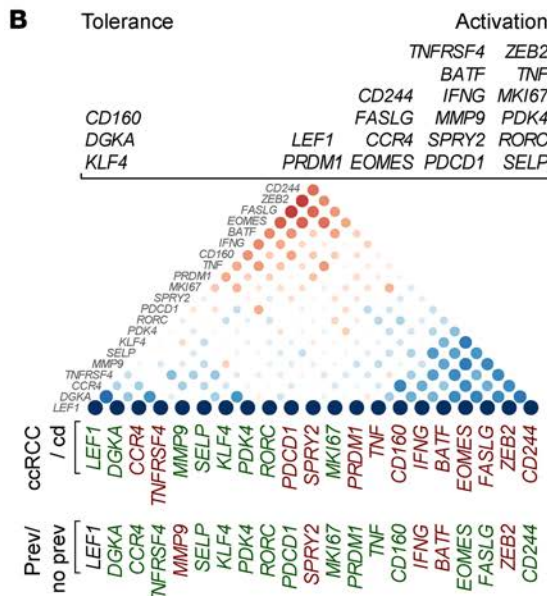
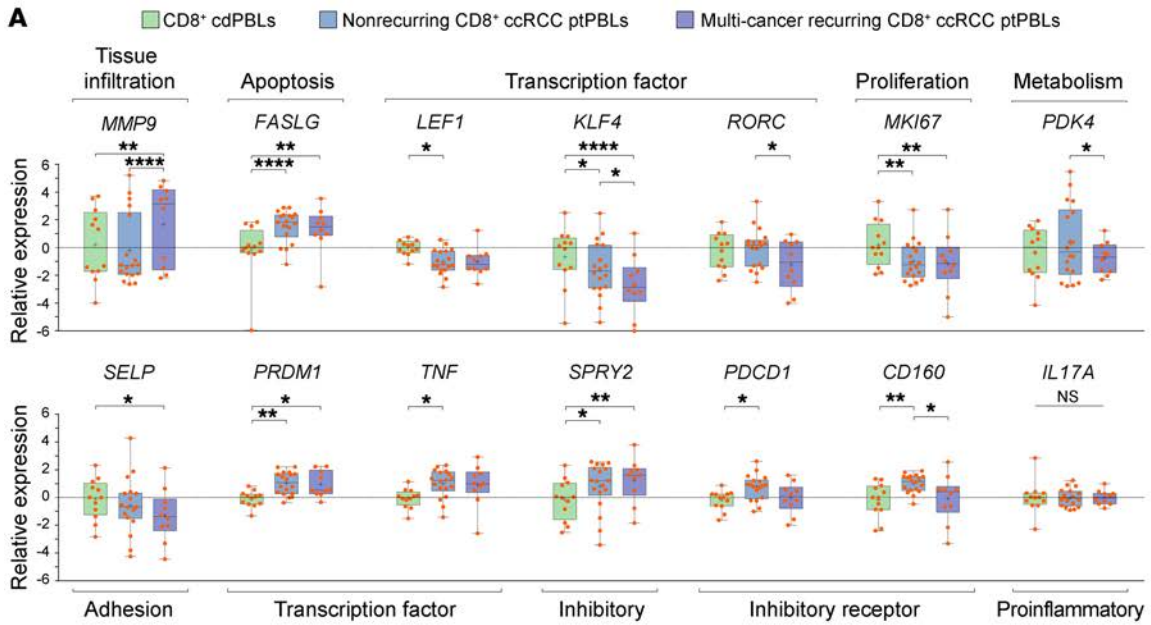


Figure 7. Additive prognostic pan-cancer DEGs stratify multi-cancer recurring ccRCC patients having activated CD8⁺ T cell profiles. (A) DEGs from the validation cohort were compared among cdPBLs ($n = 12$) and ptPBLs with ($n = 10$) or without ($n = 18$) recurring multi-cancers. P , 2-way ANOVA with Tukey post test; *, $P < 0.05$; **, $P < 0.01$; ***, $P < 0.0001$; boxes, upper and lower quartiles; whiskers, all points maxima to minima; +, mean; line, median. Functional classifications of DEG groups are listed above and below, and the literature was used to (B) segregate DEGs according to tolerance or activation phenotypes. Correlograms (Spearman method) using normalized $-\Delta\text{Ct}$ qRT-PCR expression values for visualization of 2 groups of pan-cancer and T cell-polarizing DEGs, with differences observed between all patients with ccRCC vs. control donors and patients with vs. without recurring cancers (Student t test, $P < 0.05$) (red, increased expression; green, decreased expression). Only *MMP9* is significantly increased in multi-cancer patients relative to all others. (C) Pan-cancer DEG combinations tested for additive prognostic effects using TCGA KIRK data set. Only *MMP9*, *LEF1*, *PF4V1*, *TIMP1*, and *TMEFF1* demonstrate additive prognostic effects, and these cluster in correlograms (as above) enquiring pan-cancer DEGs with combinatorial effects on prognosis. Kaplan-Meier plots P , log-rank. (D) Venn diagram illustrating that ptPBLs have more differentially represented exon-exon PSR junctions relative to TILs; both are relative to TIICs ($P < 0.05$; ANOVA, Transcriptome Analysis Console v.3, Affymetrix), with 8% overlap of total PSR junctions between ptPBLs and TILs and 47% of all pan-cancer DEGs having shared ptPBL and TIL PSR junction identity (see Supplemental Table 8).

ferences including higher isoform numbers for immune checkpoints *TIGIT* and *LAG3*. Both *MMP9* and *TCF7* common isoforms were further increased in ptPBLs relative to TILs, and both *CD69* and *IQGAPI* common isoforms were modified in ptPBLs relative to cdPBLs. For *MMP9*, *TIMP1*, *IQGAPI*, *MPHOSPH8*, *CD69*, *TCF7*, *LAG3*, and *TIGIT*, the same isoforms are repeatedly represented among isolate types (i.e., CD8⁺ ptPBLs and TILs, relative to CD8⁺ TIICs and cdPBLs) (Supplemental Table 8). Together, these results suggest that prognostic effects of pan-cancer FIR-DEGs may also be the result of deficiencies in transcript isoforms required for optimal T cell fitness.

Enrichment of pan-cancer-disrupted *MMP9* pathways in ccRCC ptPBLs. Our initial strategy to use PPI analyses for refining ccRCC DEGs for validation was only partially useful. Now armed with validation experiments and strength in statistics for individual DEGs by repeating PPI analysis using a rudimentary search engine (STRING), the importance of *MMP9* having the highest combined interaction annotation score (14.91) and its positioning as a central interacting node of pan-cancer FIR-DEGs (*TIMP1*, *PDK4*, *LEF1*, *CDA*, *KLF4*, *PF4V1*, *SELF*, *PIM2*, *ICOS*, *IFNG*, *IL23A*, *IL6ST*, *TCF7*, *SELL*, *SERPINE1*, *OSM*, *CXCL5*, *HBA1*, *COLA1*, *MAB2*, *LIFR*, *IQGAPI*, *MAPK8*, *PIK3CA*, *BLC2*, *LAG3*, and *TIGIT*) with associated cytokine production and immune cell migration and adhesion cellular processes held more weight (Supplemental Figure 6).

MMP9 in CD8⁺ PBLs was 1 of 3 DEGs able to stratify patients with RCC from control donors, and *MMP9* was increased in patients with RCC who had recurring pan-cancer. We thus used advanced PPI and pathway analyses (IID and pathDIP, using NAViGaTOR) to reexamine the microarray data sets with the aim to decipher the significant role of *MMP-9* in signaling cascades at play in patients with ccRCC. A comprehensive pathway enrichment analysis using all 1036 nonredundant ptPBL DEGs identified pathways including amyloid fiber formation, plate-

let activation, sirtuin (SIRT) and histone deacetylase (HDAC) activation, leukocyte transendothelial migration, alcoholism, SUMOylation, androgen receptor, and TNF- α ($P < 1 \times 10^{-10}$); all had links to *MMP9* regulation (Supplemental File 1B). To identify the most relevant *MMP-9* pathways of the 235 revealed by pathDIP in ccRCC ptPBLs, we performed correlation analyses revealing that 216 of the 1036 DEGs were significantly correlated with *MMP-9*-positive pathways (Supplemental Table 9). Generating physical PPI networks using NAViGaTOR demonstrated that all but 6 of these 216 DEGs (97.71%) do interact (Figure 8A, see Supplemental Figure 7 for full PPI). From pathway-enrichment analysis using pathDIP, many disease, cancer, and immunity pathways could be repeatedly observed in *MMP-9*-significant DEG-associated pathways (Figure 8B, see Supplemental Figure 8 for full analyses). Tissue-specific disrupted PPI networks among *MMP-9* interactors in 13 cancers were examined. The majority of identified genes represented in cell/leukocyte migration and adhesion processes and extracellular matrix disassembly and collagen metabolism (Supplemental Figure 8) as recently reported represent pretreatment serum biomarkers in response to ICB (34). Genes common to ccRCC ptPBLs are involved in immune response and activation, apoptosis regulation, and migration in response to bacteria (35). Interestingly, cancers having the highest *MMP-9* gained and lost PPIs were colon, mouth, and lung (Figure 8C). Finally, an independent differential correlation analysis and organization of *MMP-9* pathways and their significantly associated DEGs was used to validate that although extracted from ccRCC ptPBL expression signatures, the majority of *MMP-9* pathways filtered on ccRCC DEGs were most linked to a variety of renal diseases; numerous viral, bacterial, and parasitic infections; numerous cancers; immunity and antigen recognition and activation; differentiation; and cellular survival pathways (Figure 9; see Supplemental Figure 9 for expanded pathway DEG names).

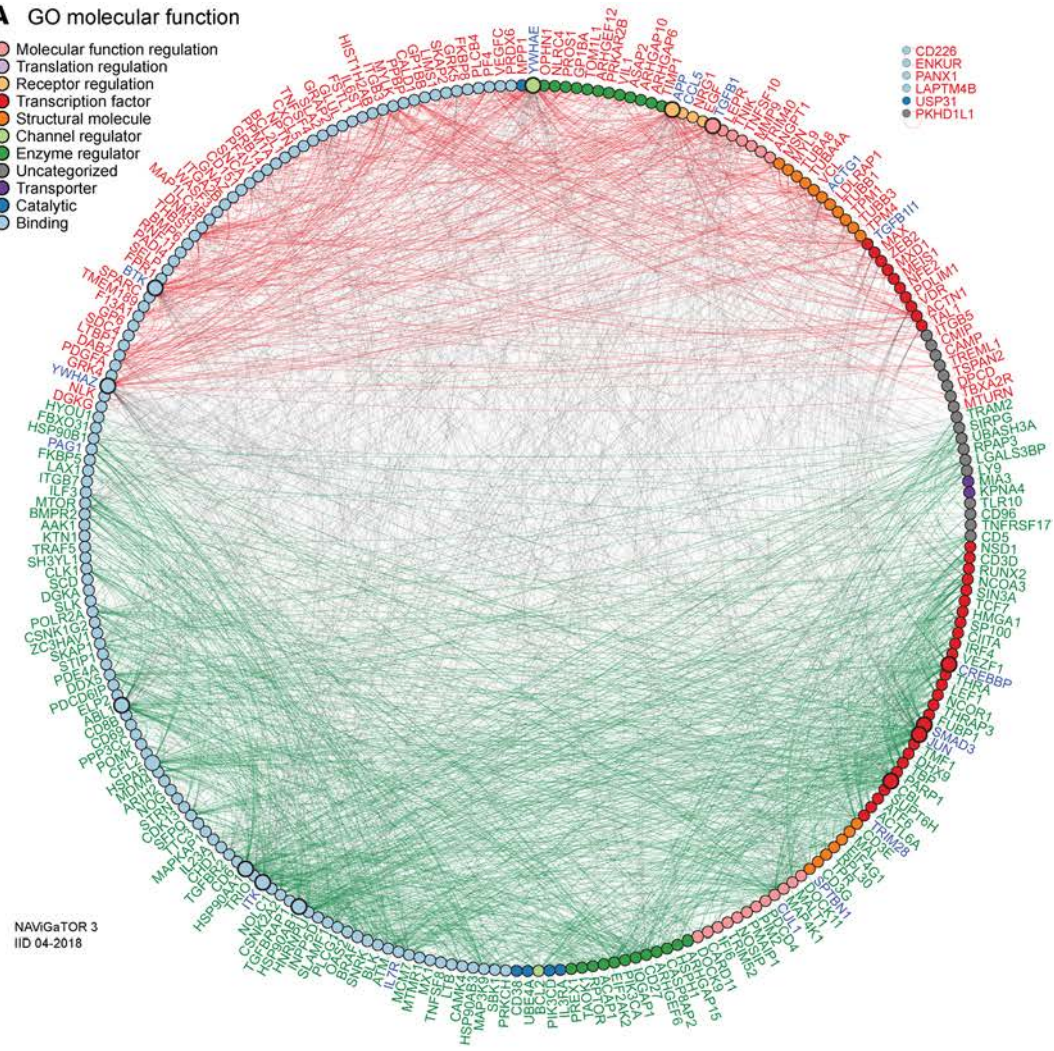
Discussion

The importance of combining TIL and ptPBL profiles, large patient data sets, and bioinformatics to resolve singular predictive biomarkers representing pan-pathology personalized immunotherapeutic targets cannot be understated. We set out to elucidate novel pan-cancer targetable immune biomarkers using a non-biased approach in which we discovered numerous pan-cancer FIR-DEGs correlating with patient survival, several of which have also been identified as immunotherapy-resistance, HIV-controller, and bacterial infection biomarkers. In developing an assay for RCC patient stratification, we found that this was possible with as few as 3 CD8⁺ ptPBL DEGs (i.e., *MMP9*, *LEF1*, and *IFNG*). We discovered that *MMP9* was increased among patients with recurring pan-cancer, with some suffering from as many as 3 malignancies without recorded metastases. PPI networks placed *MMP9* as a central node of interaction matrices amid other pan-cancer FIR-DEGs identifying cell migration and cytokine pathways.

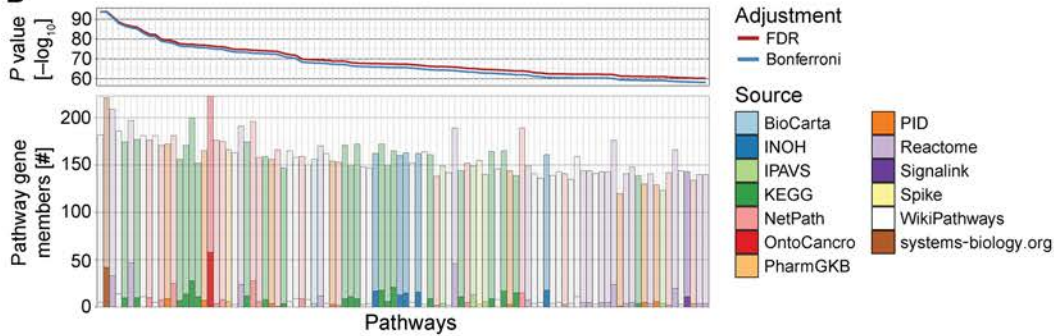
MMP-9 (leukocyte gelatinase B) is a type IV collagenase (36) belonging to the MMP family of more than 25 secreted and transmembrane-bound, zinc-dependent endopeptidases controlling tissue remodeling by degrading components of the extracellular matrix, proteinases, adhesion molecules, chemokines, and cyto-

A GO molecular function

- Molecular function regulation
- Translation regulation
- Receptor regulation
- Transcription factor
- Structural molecule
- Channel regulator
- Enzyme regulator
- Uncategorized
- Transporter
- Catalytic
- Binding



B



C

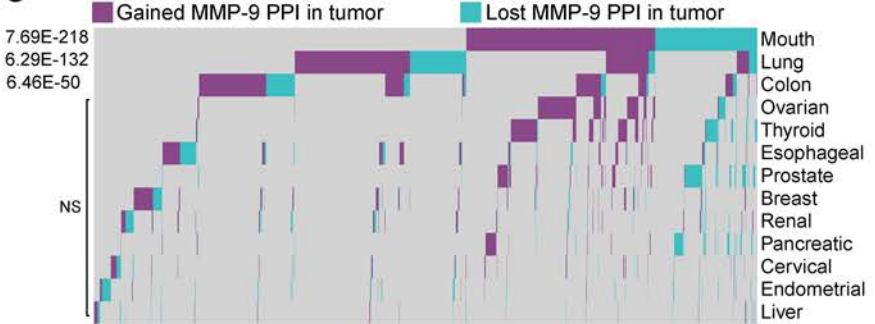


Figure 8. Enrichment of disrupted *MMP9* pathways in ccRCC patient circulating cells and various cancers. (A) PPI network linking pan-cancer proteins from significant *MMP-9* pathways-associated ccRCC ptPBL DEGs. DEGs (nodes/circles) and their interactions (edges/lines) are shown in red (high expression) and green (low expression), and gray edges highlight interactions between them (NAViGaTOR v3 and IID v04-2018). Noninteracting proteins are listed on the top right. DEG nodes are colored according to GO Molecular Functions listed in the legend. Larger node circles, represent the high degree of interactions with all other DEGs, and blue DEG names represent centrality of interactors. (B) Pathway enrichment analysis graphs depicting results of pathDIP analysis for *MMP-9* pathway interactors from correlation analyses. Upper panel shows significance of enrichment obtained for individual pathways (P value, $-\log_{10}$) adjusted for multiple testing using FDR and Bonferroni methods. Lower bar plot shows overlap between query genes and members of individual pathways. Respective numbers of known and predicted pathway members are distinguished by opacity, and fill color indicates source of given pathway. Plots are restricted to the top 100 most significant (see Supplemental Figure 7A for the full pathways). (C) Tissue-specific disrupted PPI networks among *MMP-9* interactors in cancer. Gained and lost *MMP-9* PPIs in 13 nonmalignant and pretreatment tumors highlighting its tissue-specific role in cancer, where 106 disrupted *MMP-9* PPIs were identified ($n = 2801$) (see Supplemental Figure 7). A total of 1814 disrupted PPIs were found, 81% of which are disrupted in only 1 or 2 tissues and only less than 5% are present in more than 3 tissues.

kines (37). Following its activation by cleavage, secreted pro-MMP-9 is regulated by tissue inhibitor of metalloproteinases 1 (TIMP-1), also identified as a pan-cancer FIR-DEG. MMP-9 is a biomarker of pathogenesis and progression of various diseases, including heart disease, atherosclerosis, hypertension, chronic obstructive pulmonary disease, blood-brain barrier disorders, endometriosis, Down syndrome, and streptococcal pneumonia (38, 39). MMP-9 is important for productive infection by numerous viruses, including hepatitis viruses, vesicular stomatitis virus, respiratory syncytial virus, and HIV-1 (40).

Although many MMPs are associated with poor prognoses, MMP-9 is the most extensively studied and is associated with aggressive phenotypes and poor prognoses in several solid malignancies (41). In cancer, MMP-9 is associated with genetic instability, tissue remodeling, tumor cell proliferation, invasion and motility, progression, extravasation, metastasis, epithelial-mesenchymal transition, angiogenesis, apoptosis, inflammation, and immunosurveillance (36). MMP-9 in PBLs, serum, and tumors predicts prognosis, invasiveness, grade and differentiation, recurrence, metastasis, and treatment resistance, for bladder, lung, blood, colorectal, prostate, and liver cancers (42–49). In patients with RCC, MMP-9 is increased in tumors and plasma (50) and correlates with histological grade (51), poor prognosis, and lowered survival (52), metastasis, decreased time to progression, and poor response to sunitinib (53).

Although many studies have examined MMPs facilitating epithelial cancer invasion via migration toward chemokines (54), others indicate MMPs shape the aggressive stromal compartment of the tumor microenvironment (55). MMPs are expressed by various immune subsets within stromal compartment across cancers, and TILs are the highest MMP-9 producers (56). MMP-9 expression disproportionately correlates with immune response genes rather than extracellular matrix genes in lung adenocarcinomas (57). MMP-9 is constitutively expressed at higher levels in splenic T cells and TILs than tumor cells (56). Immunosurveillance requires an

invasive phenotype, supporting a role for MMP-9, upregulated in response to cytokines, and facilitating migration of PBLs from the vasculature into sites of inflammation. Induced by adhesion-molecule interactions between APCs and lymphocytes, MMP-9 is considered a pure effector molecule, amplifying immune function by catalyzing innate and acquired immunity (58) and is critical for antigen-specific, activation-induced proliferation of T cells (59). We observed increased *MMP9* expression in both CD8⁺ and CD19⁺ ccRCC ptPBLs, and other genes we find correlating with *MMP9* expression are implicated in CD8⁺ cross-priming and antigen-mediated activation and proliferation (*CD69*, *STAT4*, *NFIL3*, *IL10*, and *JAK1*) (40, 59, 60). In patients with recurring pan-cancers, *MMP9* was inversely correlated with its regulator *STAT3*, which restricts tumor penetration of anti-tumor CD8⁺ T cells (61, 62). In pooled RNA PCA analyses, *MMP9* expression correlated with TILs and *CXCL13*, which induces MMP-9 expression toward leukocyte migration in perivascular spaces (63, 64). *BATF* was the only pan-cancer FIR-DEG negatively correlating with *MMP9* in patients with RCC, ccRCC, and recurring pan-cancer, and it is known to suppress MMP-9 and effector molecules for CD8⁺ T cell differentiation and survival (65). Other DEGs in patients with recurring pan-cancer (*KLF4*, *RORC*, *CCR4*, and *PKD4*) are implicated in MMP-9 regulation for cell migration (66–69). Some DEGs stratifying patients with RCC and correlating with *MMP9* have been associated with response to immunotherapies (*MMP9*, *IL10*, *NFIL3*, *LEF1*, *FASLG*, *MKI67*, *STAT4*, *CD244*, and *JAK1*). In a recent study examining correlates with the response of ccRCC to ICB, despite an underpowered discovery cohort, increased *MMP9* correlated with progressive disease relative to low *MMP9* in partial responders or patients with stable disease (70). Another study demonstrated that reduction of MMP-9 on monocytes from combination immunotherapies led to conversion of tumor microenvironments from “cold” to “inflamed” states eliciting protective T-cell responses (71). Finally, *MMP9* and numerous other extracellular matrix pan-cancer genes we have identified, have also just recently been shown to be differentially expressed between ICB responders and nonresponders (72), and where, notably, we identify almost half (44%) of their defined immunotherapy failure signature as gained PPIs of MMP-9 during cancer.

Possible mechanisms of MMP-9 regulation in cancer are supported by our observations of alternative *MMP9* RNA isoforms in RCC CD8⁺ ptPBLs and TILs and by previous association of MMP-9 polymorphisms with disease (36). Another possible mechanism stems from reports of pharmacologic concentrations of melatonin inhibiting MMP-9 through melatonin receptor 1A (MTNR1A), as an oncostatic agent inhibiting tumor growth and invasiveness of renal, breast, gastric, hematological, prostate, bone, skin, liver, and brain tumors (33). MTNR1A, extensively expressed by splenic, thymic and circulating CD4⁺, CD8⁺, and B⁺ lymphocytes (73), was found to be significantly reduced in ccRCC TILs and TIL-Bs and thus less likely to respond to melatonin or to regulate MMP-9. Thus, representing an attractive target for the treatment of numerous diseases, a specific MMP-9 inhibitor, JNJ0966, has been developed for clinical utility in immune disorders (74) and could be repurposed to control numerous cancers and pathologies. Finally, another possible MMP-9 cancer-onset mechanism stems from our observations of its gained and disrupted PPIs that were

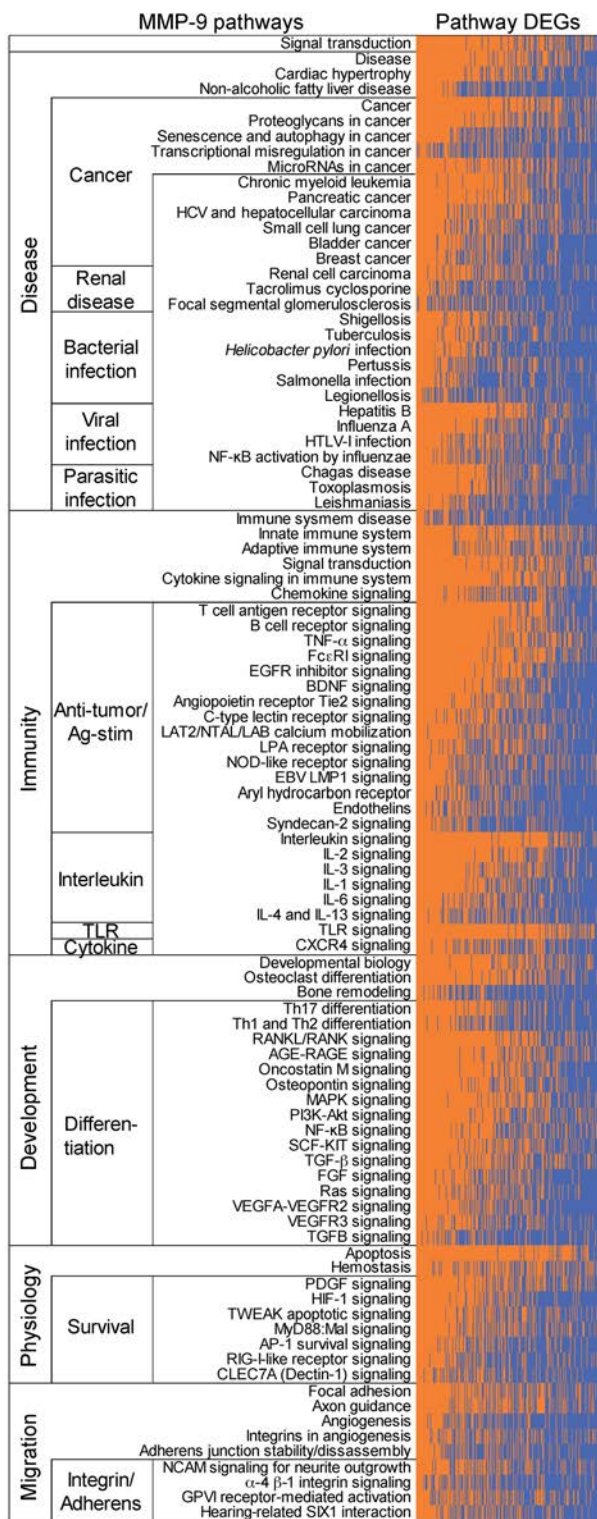


Figure 9. MMP-9 pathway DEGs are linked to a variety of renal diseases, cancers, microbial infections, and immune activation. MMP-9 pathways associated pPBL DEGs from pathDIP matrix were correlated, and DEGs significantly associated with MMP-9 pathways ($P < 0.05$) were used to generate a supervised heatmap of the most highly correlating MMP-9 pathway genes and associated pathways. The majority of FIR DEG-associated MMP-9 pathways are enriched for those of renal diseases; numerous viral, bacterial, and parasitic infections; numerous cancers; immunity and antigen recognition and activation; differentiation; and cellular survival pathways. The orange area shows DEGs represented in the pathway; blue shows DEGs not represented in the pathway (see Supplemental Figure 9 for the full list of DEG pathways).

most significant in colon, mouth, and lung cancers. Thus, deregulation of MMP-9 roles in maintaining colonic microbiota (75) may have profound effects on cancers in these systems.

We have focused on MMP-9 because this molecule efficiently stratifies patients with RCC via both CD8⁺ and CD19⁺ immune cells, yet extends itself beyond pan-cancer. It is an attractive pan-pathology immune biomarker and target for the treatment of numerous diseases and is a central interactor for numerous other pan-cancer biomarkers we have identified herein. MMP-9 is an attractive pan-pathology biomarker because its elevated expression can be detected in tumors but also by less invasive methods examining blood and by completely noninvasive methods examining urine, fecal samples, tears, and exhaled breath condensate (76–78). Because MMP-9 expression is controlled by circadian rhythm, diurnal variations may be responsible for its initial immune deregulation in patients. With the possibility of its expression causing varied responses among patients, MMP-9 monitoring may be valuable over the course of treatment, whether it is radio-, chemo-, or immunotherapeutic. Further work determining the precise polarity of T cell subsets expressing MMP-9 and its function permitting their infiltration into tumors may resolve imminent questions of the field concerning tumor immunogenicity. Aside from *MMP9*, however, numerous other identified pan-cancer FIR-DEGs warrant further investigation.

In the discovery of how pan-cancer FIR-DEGs may have pan-pathology effects, we observed that blinded refining of the target list using informatics without previous knowledge of their oncostatic or -promoting abilities increased the identity of pan-cancer DEGs also important for HIV-1 controllers. As the first data-driven suggestion, these may actually represent pan-pathology markers. To be certain of this link to HIV-1 fitness correlated by our pan-cancer FIR-DEGs, we performed extensive literature reviews indicating that the majority shared similar effects of promotion or inhibition of HIV-1 infection. Other PBL DEGs shared by many infectious and autoimmune diseases are common to those discovered here (e.g., *MMP9*, *IGF2BP3*, *TIMP1*, *CDA*, *IFNG*, *PFAV1*, *LAG3*, *PIM2*, *ICOS*, *TIGIT*, and *IL23A*).

To our knowledge, we are the first to present a pan-pathology biomarker pipeline starting from CD8⁺ and CD19⁺ DEGs from paired cancer patient PBLs, TILs, and TIICs. Prognostic DEGs were validated across 5 cancers and as few as 3 could stratify patients and pan-cancer recurrence. We focused on DEGs that could be easily detected as biomarkers or targeted by therapies. The resulting pan-cancer genes are of additional interest, as they may reflect a pan-pathology state of the FIR, with numerous DEGs similarly modulated and important for resistance to immunotherapy and unresolved viral and bacterial infections. The noninvasive FIR-DEGs we have identified warrant future investigation toward the development of their potential in precision diagnostics and precision pan-disease immunotherapeutics.

Methods

Complete detailed methods are in the supplemental materials.

Statistics. For the training ccRCC cohort, a sample size of $n = 5$ paired patient TILs, TIICs, and PBLs was determined as having above 0.9 power according to the GeneChip Human Transcriptome Array 2.0 manufacturer guidelines (Affymetrix, Thermo Fisher Sci-

entific). Training set microarrays power calculations by the manufacturer used an inference of means calculation (<https://www.stat.ubc.ca/~rollin/stats/ssize/n2>). Multiple hypothesis test correction was performed using the FDR Benjamini–Hochberg step-up procedure. For the RCC validation cohort ($n = 74$), power analysis determined that a minimal sample size of $n = 62$ was needed to reach a power of 0.80 at $\alpha = 0.05$ (2-tailed) (G*Power ver. 3.1.9.2; Universität Düsseldorf, Germany). For algorithms used, statistical methodology for algorithms is described within scripts and <https://www.biostars.org/p/153013/>. Limma and survival packages for R are used for single and synergistic ccRCC prognostic algorithms. Dendrogram, heatmap, and PCA unsupervised algorithms used the Euclidean distance metric and complete linkage clustering method. Correlogram algorithm uses the R corrplot library, and was created from <http://www.sthda.com/>, using R-project corrplot and vignette packages. Binomial correlations for testing validated DEGs against clinical patient parameters used 2-tailed nonparametric Spearman correlation with 95% CI (Prism V6.01, GraphPad). An unpaired 2-tailed student's t test with FDR of 1% was used to compare the 2 groups, and 2-way ANOVA (with Sidak's multiple-comparisons test) and 95% CI was used for multiple comparisons. Pathway enrichment analysis results were adjusted for multiple testing by applying FDR and Bonferroni methods. P values of less than 0.05 were considered to indicate a statistically significant difference.

Study approval. Patients with renal cancer underwent resection for stage I–IV RCC between 2013 and 2017 at the CHUM (Montreal, Canada). Study approval and written and informed consent procedure approval was granted by the CHUM Research Ethics Board. Written informed consent was received from all study participants prior to inclusion in the study. All methods were performed in accordance with the relevant guidelines and regulations. Clinical participant data was randomly numbered for complete anonymity.

Data availability. TCGA KIRC RNA-seq data sets and associated clinical data sets are available at the cBioPortal for Cancer Genomics (<http://gdac.broadinstitute.org/>). Pan-cancer testing patient cohort GEO, the EGA and TCGA data sets are available at <http://kmplot.com/>. DEG protein profiles in cells and across 17 cancers are available from <https://www.proteinatlas.org/>. Transcriptomic data sets from patients with melanoma and non-small-cell lung cancer (NSCLC) treated with anti-PD-1 therapy are available from Hugo et al. (31) and Rizvi et al. (32). The HIV-1 elite controllers data set is available from Zhang et al. (29), and the bacterial data sets are listed in Song et al. (30). Comprehensive pathway enrichment analysis and PPI analyses are available as Supplemental Data. The microarray data are published at the National Center for Biotechnology Information Gene Expression Omnibus (<http://www.ncbi.nlm.nih.gov/geo>) under GEO accession number GSE117230.

Author contributions

A. Monette, IJ, and RL designed experiments. A. Monette, NAAB, and LR selected and received informed consent from patients and transported biospecimens. JBL performed the surgeries. JBL and LR contributed to clinical data. A. Monette and NAAB performed immune cell isolation and biobanking. NAAB assisted in flow-cytometry analyses. A. Monette performed RNA extractions and organized collaboration and outsourcing. A. Monette and A. Morou created algorithms. A. Morou selected T cell-polarizing

validation genes, performed microfluidics qRT-PCR validation experiments, and normalized and analyzed the data. IJ performed integrative analysis, interaction network, pathway enrichment analysis, and suggested experiments and analyses. SR performed the pan-cancer analyses. TT performed pathway enrichment analysis. A. Monette and RL organized, harmonized, analyzed and interpreted the data, created figures, and wrote the manuscript. A. Monette, IJ, DEK, and RL supervised the study. IJ, A. Morou, DEK, NAAB, JPR, and RL critically reviewed the manuscript. All authors revised the final manuscript.

Acknowledgments

We thank all study participants and patients; The Cancer Genome Atlas; Mathieu Latour and Roula Albadine and supporting staff of the CHUM pathology department; Manon de Ladurantaye and Anne-Marie Mes-Masson from the CRCHUM for RNA quality profiling, Geneviève Cormier and Fred Saad from the CRCHUM for drawing blood from control donors; Gilles Corbeil of the CRCHUM genomics department for RNA quality testing and microarray profiling; Francois Harvey of the CRCHUM bioinformatics department; Peter Graf and Patrick Sabourin from Affymetrix for providing reagents and technical assistance; Zeeshan Farroq and Ofir Goldberger from Fluidigm; Erika Diaz from StemCell; Andrew Mouland from McGill University; Simon Turcotte from University of Montreal; and Sascha Ring from Biostars for their advice. This work was partially performed at the Institut du Cancer de Montréal CRCHUM and University of Montreal, in Montreal, Quebec, Canada. This work was supported by a Canadian Cancer Society Research Institute grant (CCSRI) (702036, to RL and IJ) and a Biomedical Research Grant from the Kidney Foundation of Canada (KFOC130019 to RL). RL is supported by the Quebec Cell, Tissue and Gene Therapy Network—ThéCell (a thematic network supported by the Fonds de recherche du Québec—Santé [FRQS]), the FRQS, and the Immunotherapy Network (iTNT) from the Terry Fox Research Institute (TFRI), A. Monette is supported by Mitacs, Merck, l'Institut du cancer de Montréal (ICM), the Society for Immunotherapy of Cancer, and the Lady Davis Institute for Medical Research. NAB is supported by the FRQS post-doctoral award and Qatar University. JBL is supported by l'Institut du Cancer de Montréal. JPR holds the Louis Lowenstein Chair, McGill University. DEK is supported by an FRQS Research Scholar Award (grant 31035), CIHR 377124, NHLBI RO1-HL-092565, and the Canada Foundation for Innovation (CFI) (grant 31756). IJ and computational analysis were supported by the Canada Research Chair Program (CRC) (grant 225404), Ontario Research Fund (grant 34876), the Natural Sciences Research Council (NSERC) (grant 203475), the CFI (grants 203373 and 30865), the Krembil Foundation, and IBM.

Address correspondence to: Réjean Lapointe, Centre de recherche du CHUM (CRCHUM), 900 rue St-Denis, Tour Viger, Montreal, Quebec, Canada, H2X 0A9. Phone: 011.514.890.8000; Email: rejean.lapointe@umontreal.ca. Or to: Anne Monette, Lady Davis Institute for Medical Research, 3755 ch. Côte Ste-Catherine Road, Montreal, Quebec, Canada, H3T 1E2. Phone: 011.514.340.8222. Email: anne.monette@mail.mcgill.ca.

1. Morris LG, et al. Pan-cancer analysis of intratumor heterogeneity as a prognostic determinant of survival. *Oncotarget*. 2016;7(9):10051-10063.
2. Mak MP, et al. A patient-derived, pan-cancer EMT signature identifies global molecular alterations and immune target enrichment following epithelial-to-mesenchymal transition. *Clin Cancer Res*. 2016;22(3):609-620.
3. Gentles AJ, et al. The prognostic landscape of genes and infiltrating immune cells across human cancers. *Nat Med*. 2015;21(8):938-945.
4. Budczies J, et al. Mutation patterns in genes encoding interferon signaling and antigen presentation: a pan-cancer survey with implications for the use of immune checkpoint inhibitors. *Genes Chromosomes Cancer*. 2017;56(8):651-659.
5. Charoentong P, et al. Pan-cancer immunogenomic analyses reveal genotype-immunophenotype relationships and predictors of response to checkpoint blockade. *Cell Rep*. 2017;18(1):248-262.
6. Li Y, et al. A comprehensive genomic pan-cancer classification using The Cancer Genome Atlas gene expression data. *BMC Genomics*. 2017;18(1):508.
7. Kaczkowski B, et al. Transcriptome analysis of recurrently deregulated genes across multiple cancers identifies new pan-cancer biomarkers. *Cancer Res*. 2016;76(2):216-226.
8. Akbani R, et al. A pan-cancer proteomic perspective on The Cancer Genome Atlas. *Nat Commun*. 2014;5:3887.
9. Xu Q, et al. Pan-cancer transcriptome analysis reveals a gene expression signature for the identification of tumor tissue origin. *Mod Pathol*. 2016;29(6):546-556.
10. Li B, et al. Comprehensive analyses of tumor immunity: implications for cancer immunotherapy. *Genome Biol*. 2016;17(1):174.
11. Tirosh I, et al. Dissecting the multicellular ecosystem of metastatic melanoma by single-cell RNA-seq. *Science*. 2016;352(6282):189-196.
12. Gnjatic S, et al. Identifying baseline immune-related biomarkers to predict clinical outcome of immunotherapy. *J Immunother Cancer*. 2017;5:44.
13. Lim C, et al. Biomarker testing and time to treatment decision in patients with advanced nonsmall-cell lung cancer. *Ann Oncol*. 2015;26(7):1415-1421.
14. Crowley E, Di Nicolantonio F, Loupakis F, Bardelli A. Liquid biopsy: monitoring cancer-genetics in the blood. *Nat Rev Clin Oncol*. 2013;10(8):472-484.
15. Haber DA, Velculescu VE. Blood-based analyses of cancer: circulating tumor cells and circulating tumor DNA. *Cancer Discov*. 2014;4(6):650-661.
16. Shen SY, et al. Sensitive tumour detection and classification using plasma cell-free DNA methylomes. *Nature*. 2018;563(7732):579-583.
17. Best MG, et al. RNA-seq of tumor-educated platelets enables blood-based pan-cancer, multi-class, and molecular pathway cancer diagnostics. *Cancer Cell*. 2015;28(5):666-676.
18. Alix-Panabières C, Pantel K. Challenges in circulating tumour cell research. *Nat Rev Cancer*. 2014;14(9):623-631.
19. Gros A, et al. Prospective identification of neoantigen-specific lymphocytes in the peripheral blood of melanoma patients. *Nat Med*. 2016;22(4):433-438.
20. Farsaci B, et al. Analyses of pretherapy peripheral immunoscore and response to vaccine therapy. *Cancer Immunol Res*. 2016;4(9):755-765.
21. Mishra S, Kaddi CD, Wang MD. Pan-cancer analysis for studying cancer stage using protein and gene expression data. *Conf Proc IEEE Eng Med Biol Soc*. 2016;2016:2440-2443.
22. MacFarlane AW, et al. PD-1 expression on peripheral blood cells increases with stage in renal cell carcinoma patients and is rapidly reduced after surgical tumor resection. *Cancer Immunol Res*. 2014;2(4):320-331.
23. Fridman WH, Pagès F, Sautès-Fridman C, Galon J. The immune contexture in human tumours: impact on clinical outcome. *Nat Rev Cancer*. 2012;12(4):298-306.
24. Motzer RJ, et al. Nivolumab plus Ipilimumab versus Sunitinib in Advanced Renal-Cell Carcinoma. *N Engl J Med*. 2018;378(14):1277-1290.
25. Szklarczyk D, et al. STRING v10: protein-protein interaction networks, integrated over the tree of life. *Nucleic Acids Res*. 2015;43(Database issue):D447-D452.
26. Haymaker CL, et al. BTLA marks a less-differentiated tumor-infiltrating lymphocyte subset in melanoma with enhanced survival properties. *Oncoimmunology*. 2015;4(8):e1014246.
27. Monette A, et al. Immune-enrichment of non-small cell lung cancer baseline biopsies for multiplex profiling define prognostic immune checkpoint combinations for patient stratification. *J Immunother Cancer*. 2019;7(1):86.
28. Martin-Gayo E, et al. Circulating CXCR5⁺ CXCR3⁺PD-1^{lo} Tfh-like cells in HIV-1 controllers with neutralizing antibody breadth. *JCI Insight*. 2017;2(2):e89574.
29. Zhang LL, Zhang ZN, Wu X, Jiang YJ, Fu YJ, Shang H. Transcriptomic meta-analysis identifies gene expression characteristics in various samples of HIV-infected patients with nonprogressive disease. *J Transl Med*. 2017;15(1):191.
30. Song F, et al. The frontline of immune response in peripheral blood. *PLoS One*. 2017;12(8):e0182294.
31. Hugo W, et al. Genomic and transcriptomic features of response to anti-PD-1 therapy in metastatic melanoma. *Cell*. 2016;165(1):35-44.
32. Rizvi NA, et al. Cancer immunology. Mutation-landscape determines sensitivity to PD-1 blockade in non-small cell lung cancer. *Science*. 2015;348(6230):124-128.
33. Lin YW, et al. Melatonin inhibits MMP-9 transactivation and renal cell carcinoma metastasis by suppressing Akt-MAPKs pathway and NF- κ B DNA-binding activity. *J Pineal Res*. 2016;60(3):277-290.
34. Jensen C, et al. Non-invasive biomarkers derived from the extracellular matrix associate with response to immune checkpoint blockade (anti-CTLA-4) in metastatic melanoma patients. *J Immunother Cancer*. 2018;6(1):152.
35. Rahmati S, Abovsky M, Pastrello C, Jurisica I. pathDIP: an annotated resource for known and predicted human gene-pathway associations and pathway enrichment analysis. *Nucleic Acids Res*. 2017;45(D1):D419-D426.
36. Farina AR, Mackay AR. Gelatinase B/MMP-9 in Tumour Pathogenesis and Progression. *Cancers (Basel)*. 2014;6(1):240-296.
37. Goetzl EJ, Banda MJ, Leppert D. Matrix metalloproteinases in immunity. *J Immunol*. 1996;156(1):1-4.
38. Liu H, et al. Correlation between matrix metalloproteinase-9 and endometriosis. *Int J Clin Exp Pathol*. 2015;8(10):13399-13404.
39. Vissers M, Hartman Y, Groh L, de Jong DJ, de Jonge MI, Ferwerda G. Recognition of Streptococcus pneumoniae and muramyl dipeptide by NOD2 results in potent induction of MMP-9, which can be controlled by lipopolysaccharide stimulation. *Infect Immun*. 2014;82(12):4952-4958.
40. Chen J, et al. Matrix metalloproteinase 9 facilitates hepatitis B virus replication through binding with type I interferon (IFN) receptor 1 to repress IFN/JAK/STAT signaling. *J Virol*. 2017;91(8):null.
41. Kunz P, Sähr H, Lehner B, Fischer C, Seebach E, Fellenberg J. Elevated ratio of MMP2/MMP9 activity is associated with poor response to chemotherapy in osteosarcoma. *BMC Cancer*. 2016;16:223.
42. Wieczorek E, et al. MMP, VEGF and TIMP as prognostic factors in recurring bladder cancer. *Clin Biochem*. 2015;48(18):1235-1240.
43. Sun Y, et al. NanoVelcro-captured CTC number concomitant with enhanced serum levels of MMP7 and MMP9 enables accurate prediction of metastasis and poor prognosis in patients with lung adenocarcinoma. *Int J Nanomedicine*. 2017;12:6399-6412.
44. Ramón de Fata F, Ferruelo A, Andrés G, Gimbernat H, Sánchez-Chapado M, Angulo JC. The role of matrix metalloproteinase MMP-9 and TIMP-2 tissue inhibitor of metalloproteinases as serum markers of bladder cancer. *Actas Urol Esp*. 2013;37(8):480-488.
45. Gusella M, et al. Plasma matrix metalloproteinase 9 correlates with blood lymphocytosis, leukemic cell invasiveness, and prognosis in B-cell chronic lymphocytic leukemia. *Tumour Biol*. 2017;39(2):1010428317694325.
46. Alonso S, et al. Peripheral blood leucocytes show differential expression of tumour progression-related genes in colorectal cancer patients who have a postoperative intra-abdominal infection: a prospective matched cohort study. *Colorectal Dis*. 2017;19(5):O115-O125.
47. Marín-Aguilera M, et al. Molecular profiling of peripheral blood is associated with circulating tumor cells content and poor survival in metastatic castration-resistant prostate cancer. *Oncotarget*. 2015;6(12):10604-10616.
48. Shah K, Patel S, Mirza S, Rawal RM. Unravelling the link between embryogenesis and cancer metastasis. *Gene*. 2018;642:447-452.
49. Tang D, et al. PSC-derived Galectin-1 inducing epithelial-mesenchymal transition of pancreatic ductal adenocarcinoma cells by activating the NF- κ B pathway. *Oncotarget*. 2017;8(49):86488-86502.
50. Lein M, et al. Matrix-metalloproteinases and their inhibitors in plasma and tumor tissue of patients with renal cell carcinoma. *Int J Cancer*. 2000;85(6):801-804.
51. Kawata N, et al. Significant relationship of matrix metalloproteinase 9 with nuclear grade and

- prognostic impact of tissue inhibitor of metalloproteinase 2 for incidental clear cell renal cell carcinoma. *Urology*. 2007;69(6):1049-1053.
52. Kallakury BV, Karikhehalli S, Haholu A, Sheehan CE, Azumi N, Ross JS. Increased expression of matrix metalloproteinases 2 and 9 and tissue inhibitors of metalloproteinases 1 and 2 correlate with poor prognostic variables in renal cell carcinoma. *Clin Cancer Res*. 2001;7(10):3113-3119.
 53. Perez-Gracia JL, et al. Identification of TNF- α and MMP-9 as potential baseline predictive serum markers of sunitinib activity in patients with renal cell carcinoma using a human cytokine array. *Br J Cancer*. 2009;101(11):1876-1883.
 54. Chang C, Werb Z. The many faces of metalloproteinases: cell growth, invasion, angiogenesis and metastasis. *Trends Cell Biol*. 2001;11(11):S37-S43.
 55. Bussard KM, Mutkus L, Stumpf K, Gomez-Manzano C, Marini FC. Tumor-associated stromal cells as key contributors to the tumor microenvironment. *Breast Cancer Res*. 2016;18(1):84.
 56. Owen JL, Iragavarapu-Charyulu V, Gunja-Smith Z, Herbert LM, Grosso JF, Lopez DM. Up-regulation of matrix metalloproteinase-9 in T lymphocytes of mammary tumor bearers: role of vascular endothelial growth factor. *J Immunol*. 2003;171(8):4340-4351.
 57. Creighton C, Hanash S. Expression of matrix metalloproteinase 9 (MMP-9/gelatinase B) in adenocarcinomas strongly correlated with expression of immune response genes. *In Silico Biol (Gedruckt)*. 2003;3(3):301-311.
 58. Opendakker G, Van den Steen PE, Van Damme J. Gelatinase B: a tuner and amplifier of immune functions. *Trends Immunol*. 2001;22(10):571-579.
 59. Benson HL, et al. Endogenous matrix metalloproteinases 2 and 9 regulate activation of CD4+ and CD8+ T cells. *Am J Respir Cell Mol Biol*. 2011;44(5):700-708.
 60. Kothari P, et al. IL-6-mediated induction of matrix metalloproteinase-9 is modulated by JAK-dependent IL-10 expression in macrophages. *J Immunol*. 2014;192(1):349-357.
 61. Liu F, Zhang T, Zou S, Jiang B, Hua D. B7-H3 promotes cell migration and invasion through the Jak2/Stat3/MMP9 signaling pathway in colorectal cancer. *Mol Med Rep*. 2015;12(4):5455-5460.
 62. Yue C, et al. STAT3 in CD8+ T cells inhibits their tumor accumulation by downregulating CXCR3/CXCL10 axis. *Cancer Immunol Res*. 2015;3(8):864-870.
 63. Singh S, et al. Clinical and biological significance of CXCR5 expressed by prostate cancer specimens and cell lines. *Int J Cancer*. 2009;125(10):2288-2295.
 64. Modvig S, et al. Relationship between cerebrospinal fluid biomarkers for inflammation, demyelination and neurodegeneration in acute optic neuritis. *PLoS One*. 2013;8(10):e77163.
 65. Hasegawa H, Senga T, Ito S, Iwamoto T, Hama-guchi M. A role for AP-1 in matrix metalloproteinase production and invadopodia formation of v-Crk-transformed cells. *Exp Cell Res*. 2009;315(8):1384-1392.
 66. Li W, Liu M, Su Y, Zhou X, Liu Y, Zhang X. The Janus-faced roles of Krüppel-like factor 4 in oral squamous cell carcinoma cells. *Oncotarget*. 2015;6(42):44480-44494.
 67. Sato W, et al. CCR2(+)CCR5(+) T cells produce matrix metalloproteinase-9 and osteopontin in the pathogenesis of multiple sclerosis. *J Immunol*. 2012;189(10):5057-5065.
 68. Yang Y, et al. Aberrant CCR4 expression is involved in tumor invasion of lymph node-negative human gastric cancer. *PLoS One*. 2015;10(3):e0120059.
 69. Cheng CY, Hsieh HL, Hsiao LD, Yang CM. PI3-K/Akt/JNK/NF- κ B is essential for MMP-9 expression and outgrowth in human limbal epithelial cells on intact amniotic membrane. *Stem Cell Res*. 2012;9(1):9-23.
 70. Miao D, et al. Genomic correlates of response to immune checkpoint therapies in clear cell renal cell carcinoma. *Science*. 2018;359(6377):801-806.
 71. Perry CJ, et al. Myeloid-targeted immunotherapies act in synergy to induce inflammation and antitumor immunity. *J Exp Med*. 2018;215(3):877-893.
 72. Chakravarthy A, Khan L, Bensler NP, Bose P, De Carvalho DD. TGF-beta-associated extracellular matrix genes link cancer-associated fibroblasts to immune evasion and immunotherapy failure. *Nature communications*. 2018;9(1):4692.
 73. Pozo D, et al. Expression of the Mel1a-melanin receptor mRNA in T and B subsets of lymphocytes from rat thymus and spleen. *FASEB J*. 1997;11(6):466-473.
 74. Scannevin RH, et al. Discovery of a highly selective chemical inhibitor of matrix metalloproteinase-9 (MMP-9) that allosterically inhibits zymogen activation. *J Biol Chem*. 2017;292(43):17963-17974.
 75. Pujada A, et al. Matrix metalloproteinase MMP9 maintains epithelial barrier function and preserves mucosal lining in colitis associated cancer. *Oncotarget*. 2017;8(55):94650-94665.
 76. Moses MA, Wiederschain D, Loughlin KR, Zurakowski D, Lamb CC, Freeman MR. Increased incidence of matrix metalloproteinases in urine of cancer patients. *Cancer Res*. 1998;58(7):1395-1399.
 77. Annaházi A, et al. A pilot study on faecal MMP-9: a new noninvasive diagnostic marker of colorectal cancer. *Br J Cancer*. 2016;114(7):787-792.
 78. Markoulli M, Pappas E, Cole N, Holden BA. The diurnal variation of matrix metalloproteinase-9 and its associated factors in human tears. *Invest Ophthalmol Vis Sci*. 2012;53(3):1479-1484.